

### Features

- Low Loss
- Low Ripple
- High Rejection

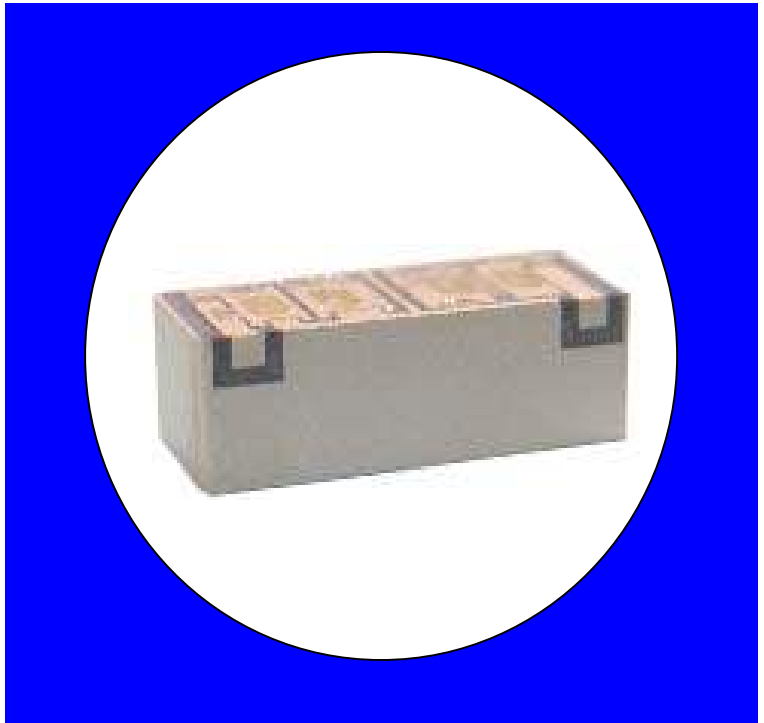
### Description

Surface mount, silver (Ag) coated barium ceramic filter. Developed for use in 1900 MHz infrastructure applications.

Weight: 1.9 grams typical

Material: Filter is composed of a ceramic block plated with Ag.

Filter complies with RoHS standards.



### Electrical Specifications

Parameter	Frequency (MHz)	Typical @ 25°C	Spec. @ 25°C	Spec. 0°C to +70°C
Insertion Loss	1930 - 1990	0.8	1.6	1.8 dB max
Return Loss @ Port 1	1930 - 1990	14	10.5	10.0 dB min
Return Loss @ Port 2	1930 - 1990	14	10.5	10.0 dB min
Passband Ripple	1930 - 1990	0.05	0.3	0.5 dB max / 3.75 MHz
Attenuation:	1780 - 1840	32	30	30.0 dB min
	2080 - 2140	33	30	30.0 dB min
Power into any port			2 Watt max	

Note: Supplier shall test each filter to the critical electrical specifications of the above table. Any subsequent audits may deviate from in value due to measurement repeatability among different test systems. Such deviations shall not exceed the following limits:

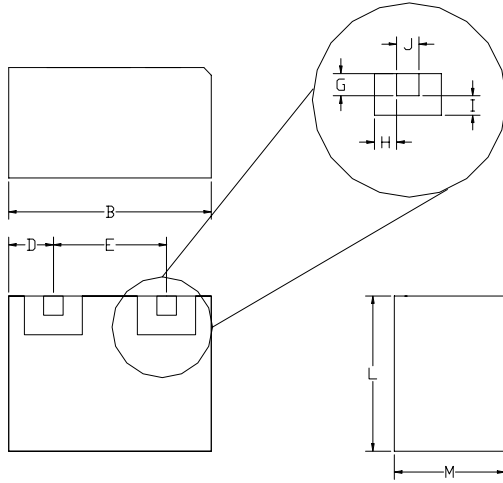
Specification Allowance	
Insertion Loss	0.1 dB
Return Loss	1.0 dB
Stopbands	1.0 dB

\*This product is covered by one or more of the following U.S. and foreign patents including: US 4,692,726;US 4,742,562; US 4,800,348;US 4,829,274;US 5,146,193;EP 0573597;DE 0573597;FR 0573597;JP 508149/92;KR 142171;US 5,162,760;US 5,218,329;US 5,250,916;US 5,327,109;US 5,488,335;CA 2114029;FR 9306297;GB 2273393;JP 3205337;KR 115113;CN 93106228.4;US 5,512,866;EP 0706719;DE 0706719;FR 0706719;GB 0706719;CN 95190359.4;US 5,602,518;US 5,721,520;US 5,745,018;EP 0910875;DE 0910875;DK 0910875;FR 0910875;GB 0910875;IE 0910875;JP 505182/98;KR 10-323013;US 5,994,978;US 6,462,629;CN 00810420.4;US 6,559,735;US 6,650,202;US 6,834,429. Other US and foreign patents pending.

\*CTS Corporation 2006 reserves all copyrights in the layout, design and configuration of the patterns on this product.\*

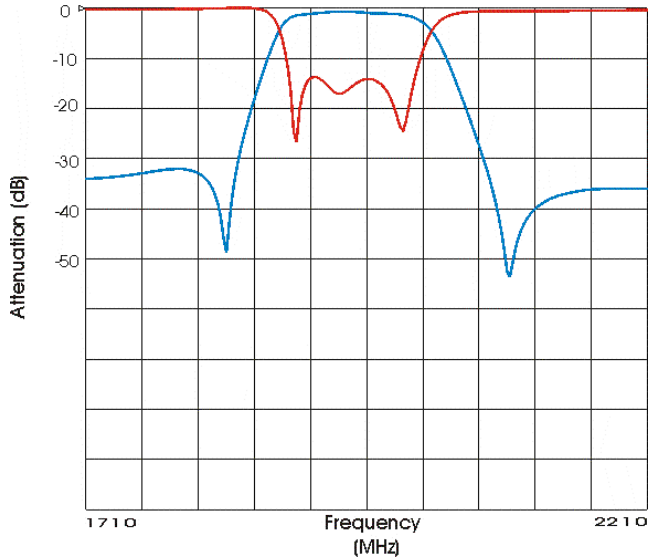
### Mechanical Drawing

Rev 0 – Origin Date: July 11, 2005 – Revision Date: July 11, 2005

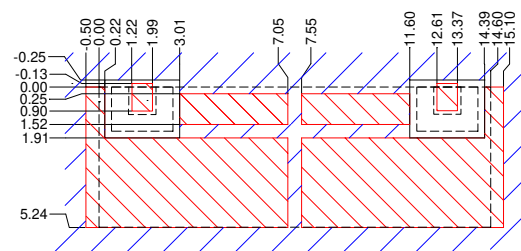


Dim	Nominal (mm)	Tolerance (mm) +/- or max
A		
B	14.74	max
C		
D	1.61	0.13
E	11.38	0.13
F		
G	1.02	0.13
H	0.64	0.13
I	0.64	0.13
J	1.02	0.13
K		
L	5.28	max
M	6.0	max

### Electrical response

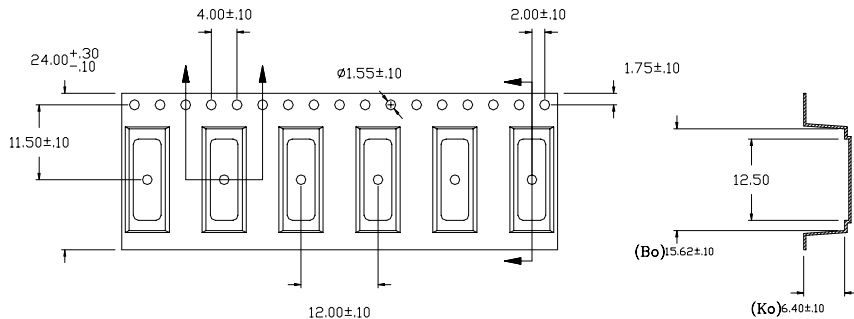
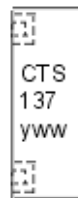
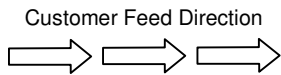


### PCB Layout



- Filter Outline
- Exposed Conductor
- Solder Resist Over Dielectric
- Solder Resist Over Conductor

### Packaging and Marking



DIMENSION	UNITS	SPECIFICATION
PITCH (Po)	mm	12
WIDTH, (Wo)	mm	24
REEL DIAMETER	mm	330
REEL WEIGHT	kg	1.5
REEL QUANTITY	ea.	500

