

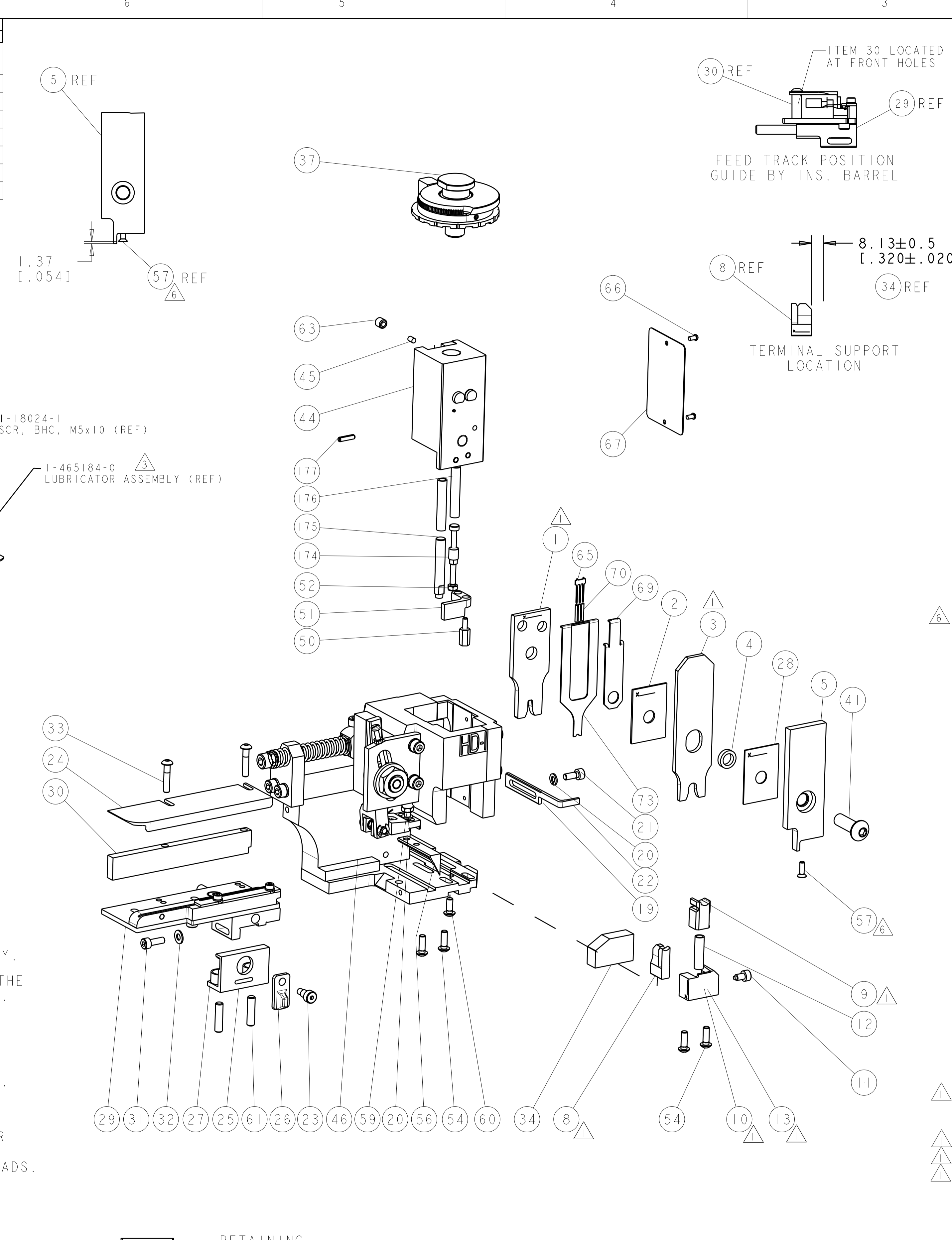
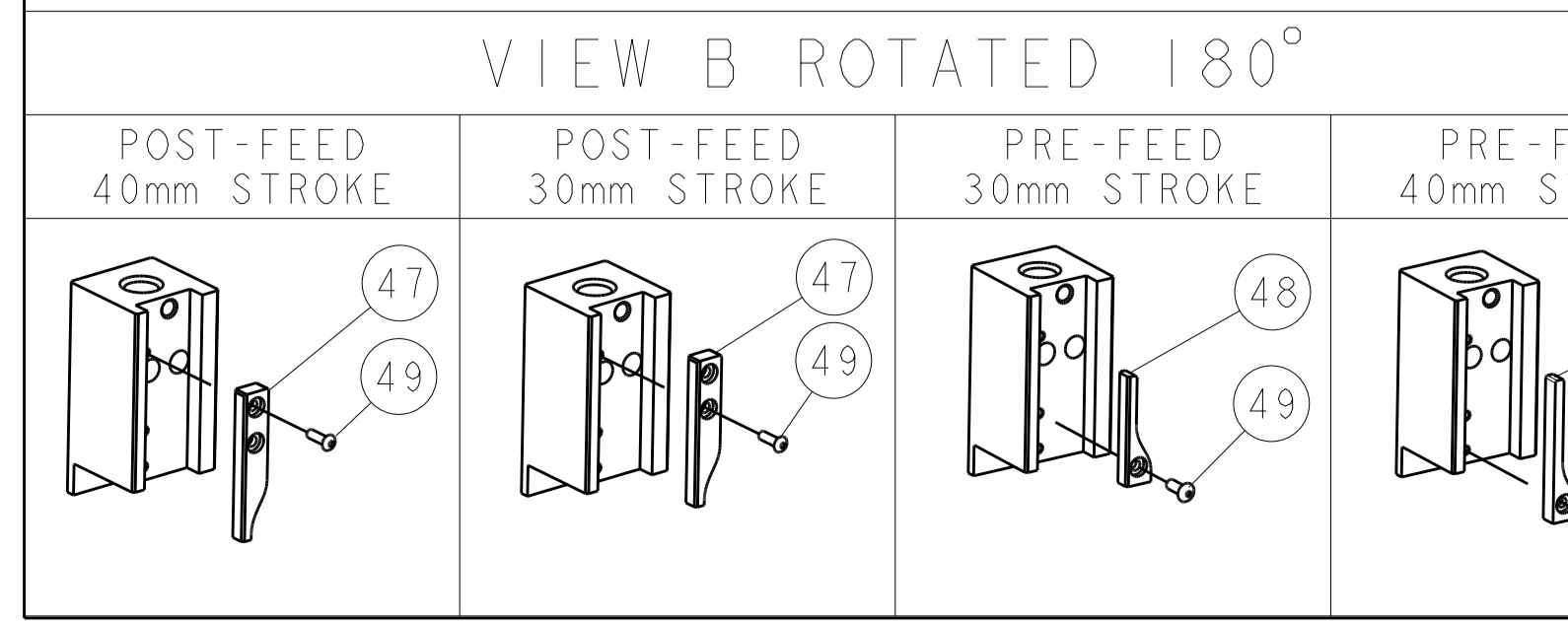
PART NUMBER	REV	TERMINATOR	FEED TYPE	DESCRIPTION
1530460-1	C	LEADMAKER	MECH POST FEED	CUTS CARRIER
1530460-2	C	BENCH	MECH PRE FEED	CUTS CARRIER
1530460-6	C	LEADMAKER	MECH POST FEED	CONTINUOUS CARRIER
7-1530460-1	C	LEADMAKER	MECH POST FEED	-1 AND SPARE PARTS
7-1530460-2	C	BENCH	MECH PRE FEED	-2 AND SPARE PARTS
7-1530460-6	C	LEADMAKER	MECH POST FEED	-6 AND SPARE PARTS
7-1530460-7	A	-	-	SPARE PARTS KIT

CRIMP DATA		TEC TERMINAL	TEC CRIMP SPECS
TERMINAL NAME: Ø4MM SOCKET CONTACT			
CRIMP	SIZE	TYPE	RANGE
WIRE	3.05mm [.120 IN]	F	>2.5-4.0mm ²
INSUL	6.35mm [.250 IN]	O	Ø6.00mm MAX [.236 IN]
WIRE STRIP LENGTH 5.50mm [.217 IN]		APPL INSTRUCTIONS 408-8322 & 408-8490	

TERMINAL	SEAL	FEED
962956	963245	19.80mm [.780 IN]

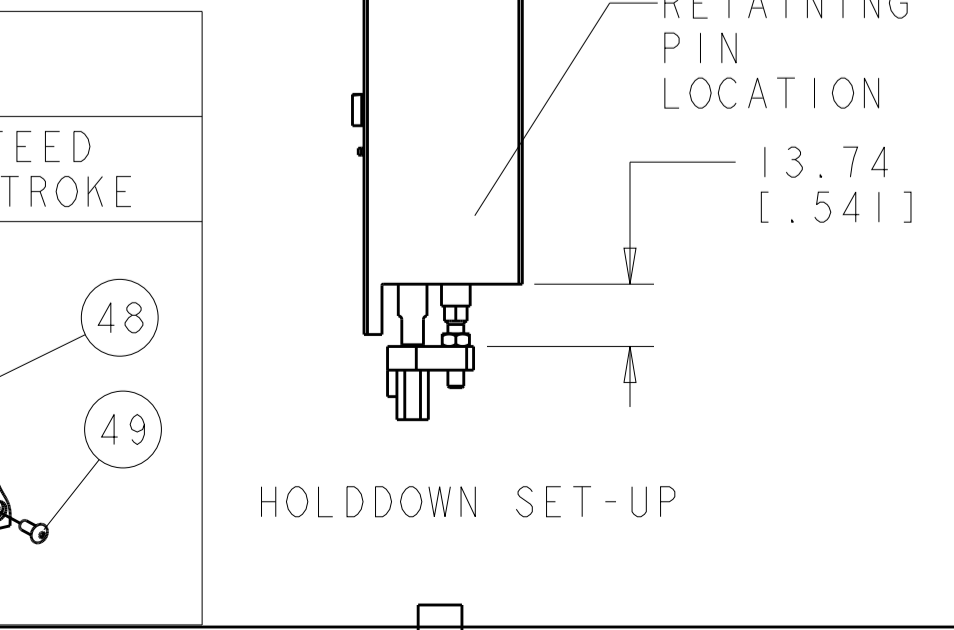
WIRE SIZE	CRIMP HEIGHT	REF SETTING
4.00mm ²	2.30 ±0.05mm [.091 ±.002 IN]	B0
3.00mm ²	2.05 ±0.05mm [.081 ±.002 IN]	C0

- △ RECOMMENDED SPARE PARTS.
- 2. GREASE RAM, CAM, CAM FOLLOWER AND FEED ROD LIGHTLY.
- △ CERTAIN TERMINALS REQUIRE LUBRICATION. REFER TO THE APPLICATOR INSTRUCTION SHEET FOR MORE INFORMATION.
- 4. LUBRICATE DAILY PER THE APPLICATOR INSTRUCTION SHEET SUPPLIED WITH THE APPLICATOR.
- △ THIS APPLICATOR APPLIES TERMINAL WITH A SEAL. INSULATION DIA QUOTED IS OUTSIDE DIAMETER OF SEAL. WIRE INSULATION DIA IS DEPENDENT ON SEAL BEING APPLIED. SEAL PN 963245 INS. DIA RANGE IS 6mm.
- △ APPLY TORQ-SEAL IN ALLEN SOCKET TO FILL HOLE AFTER FLAT HD HAS BEEN ADJUSTED TO CORRECT HEIGHT AT QUALIFICATION. APPLY #1-23419-5 LOC-TITE TO THREADS.



SET UP GAGE 458637-3		LOC	DIST	REVISIONS			
P	LTN	DESCRIPTION	DATE	OWN	APPD		
B	ECR-12-009231		18MAY2012	XZ	TE		
C	ECR-12-014580		15AUG2012	MY	GB		

QTY	UNIT	DESCRIPTION	ITEM NO	
-	1	993111-8	PIN, SLOTTED SPRING 3.0 X 12.0	177
-	2	3-22280-7	SPRING, COMPRESSION	176
-	1	1752353-1	GUIDE PIN, HOLDDOWN	175
-	1	1901680-1	GUIDE PIN, HOLDDOWN	174
-	1	1490525-1	DEPRESSOR, WIRE	73
-	1	1338705-3	DOCUMENTATION PACKAGE	71
-	3	2-23147-2	SPRING, COMPRESSION	70
-	1	1490524-2	DEPRESSOR, SPACER	69
-	1	461264-5	PLATE, IDENTIFICATION	67
-	2	21017-2	SCREW, DRIVE	66
-	1	1424350-1	HOLDER, PIN, WIRED	65
-	1	3-18031-0	SCR, SET, CUP POINT M6 X 6.0	63
-	2	2-18032-5	SCR, SET, FLT POINT M5 X 20.0	61
-	1	18024-7	SCR, BTN SKT HD CAP (M4 X 10.0)	60
-	1	5-18022-2	SCR, HEX HD CAP M4 X 8.0	59
-	1	985575-3	SCR, FLT SKT HD CAP M3 X 10.0	57
-	1	1338685-1	PAWL, FEED	56
-	4	18024-8	SCR, BTN SKT HD CAP (M4 X 12.0)	54
-	1	1-18030-0	NUT, HEX, REG M3.5	52
-	1	1901681-1	HOLDDOWN, TERMINAL	51
-	1	2-1752354-8	STANDOFF, HOLD-DOWN	50
-	1	18024-3	SCR, BTN SKT HD CAP (M3 X 10.0)	49
-	1	1338675-1	CAM, UNIVERSAL PRE FEED	48
-	1	1338676-1	CAM, UNIVERSAL POST-FEED	47
-	1	1320999-4	APPLICATOR SUBASSEMBLY, HDI	46
-	1	690191-1	PLUG, NYLON	45
-	1	1633724-1	RAM, (SIDE FEED)	44
-	1	2-18024-6	SCR, BTN SKT HD CAP (M8 X 25.0)	41
-	1	879103-2	FINE ADJUST HEAD ASSEMBLY	37
-	1	1-1752356-3	SUPPORT, TERMINAL	34
-	2	1-18024-0	SCR, BTN SKT HD CAP (M4 X 20.0)	33
-	1	18027-2	WASHER, FLAT, REG M4	32
-	1	1-18023-2	SCR, SKT HD CAP M4 X 12.0	31
-	1	1320908-7	SPACER, STRIP GUIDE	30
-	1	1633073-2	STRIP GUIDE ASSEMBLY	29
-	1	455888-6	SPACER, CRIMPER	28
-	2	1-22284-0	SPRING, COMPRESSION	27
-	1	356835-1	LEVER, DRAG RELEASE	26
-	1	240792-1	DRAG, TERMINAL	25
-	1	1320928-2	STRIP GUIDE	24
-	1	980371-4	SCR, SKT HD SHLDR 5.0 DIA X 6.0	23
-	1	690472-2	STRIPPER	22
-	1	1-18023-1	SCR, SKT HD CAP M4 X 10.0	21
-	2	18025-2	WASHER, SPRG LOCK, REG M4	20
-	1	690472-1	STRIPPER	19
-	1	1338684-2	SHEAR HOLDER, FRONT	13
-	1	3-22280-3	SPRING, COMPRESSION	12
-	1	356885-5	STOP, SHEAR	11
-	1	1-1320921-0	SHEAR HOLDER, FRONT, CUT	10
-	1	318707-1	FLOATING SHEAR, FRONT	9
-	1	1333208-5	ANVIL, COMBINATION .120	8
-	-	-	-	7
-	-	-	-	6
-	1	1338680-1	DEPRESSOR, SHEAR	5
-	1	3-238011-5	BLOCK, CRIMPER SPACER	4
-	1	1-655830-7	CRIMPER, INSUL O	3
-	1	1-455888-0	SPACER, CRIMPER	2
-	1	456409-3	CRIMPER, WIRE .120 "F" PREMIUM	1



*** WARNING**
ON INSTALLATION, SET WIRE DISC TO LARGEST WIRE SIZE SETTING. USE OF SETTINGS BELOW MIN. REQUIRED CRIMP HEIGHT SETTING WILL CAUSE DAMAGE TO CRIMP TOOLING.

QTY	UNIT	DESCRIPTION	ITEM NO						
-77	-76	-72	-71	-6	-2	-1	PART NO	DESCRIPTION	ITEM NO

APPROVED	DATE	BY	DATE	BY	DATE
S. XI	28JAN2011	S. ZOU	28JAN2011		

STE	TE Connectivity		
Harrisburg, PA 17105-3608			
NAME: FINE ADJUST SIDE FEED HDI APPLICATOR			
SIZE	CAGE CODE	DRAWING NO	RESTRICTED TO
A1	00779	1530460	