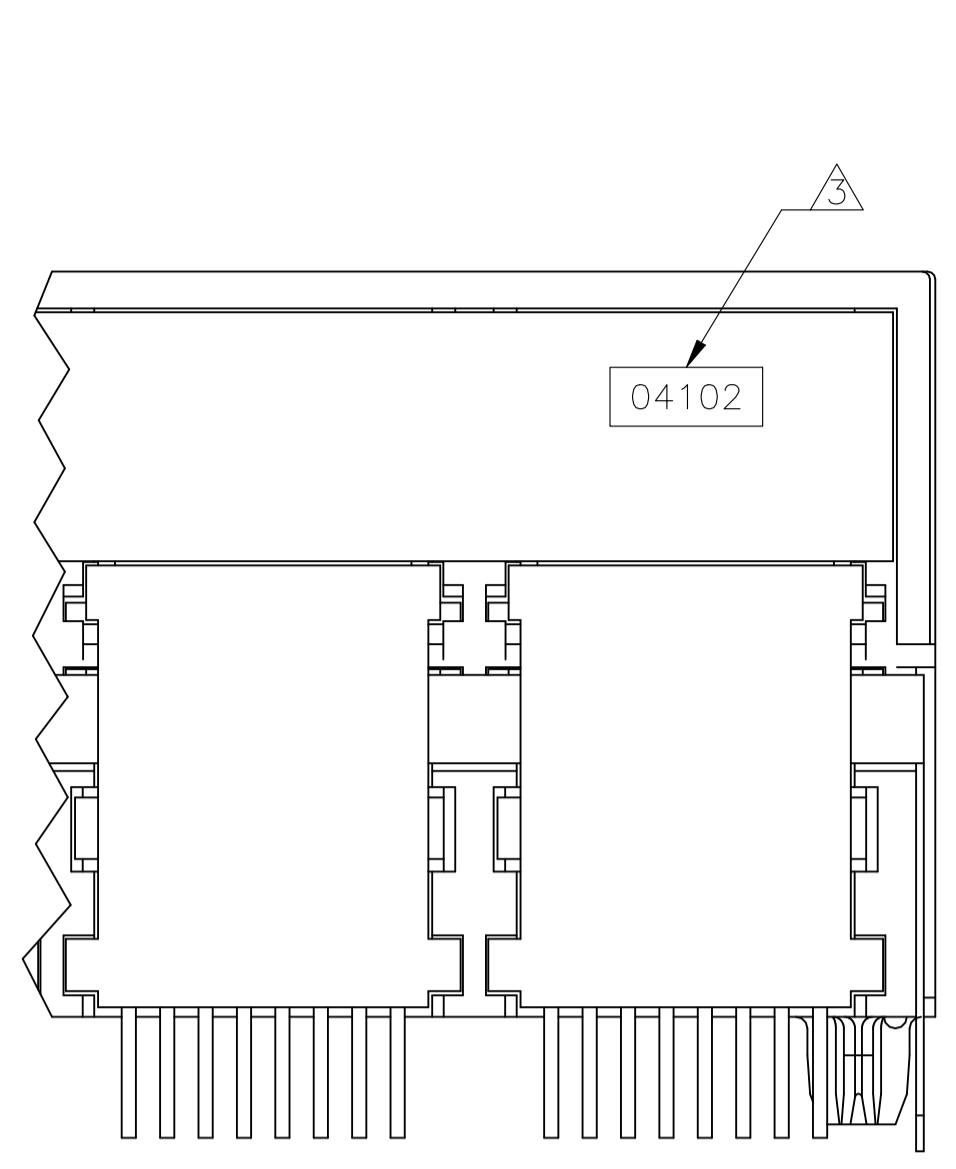
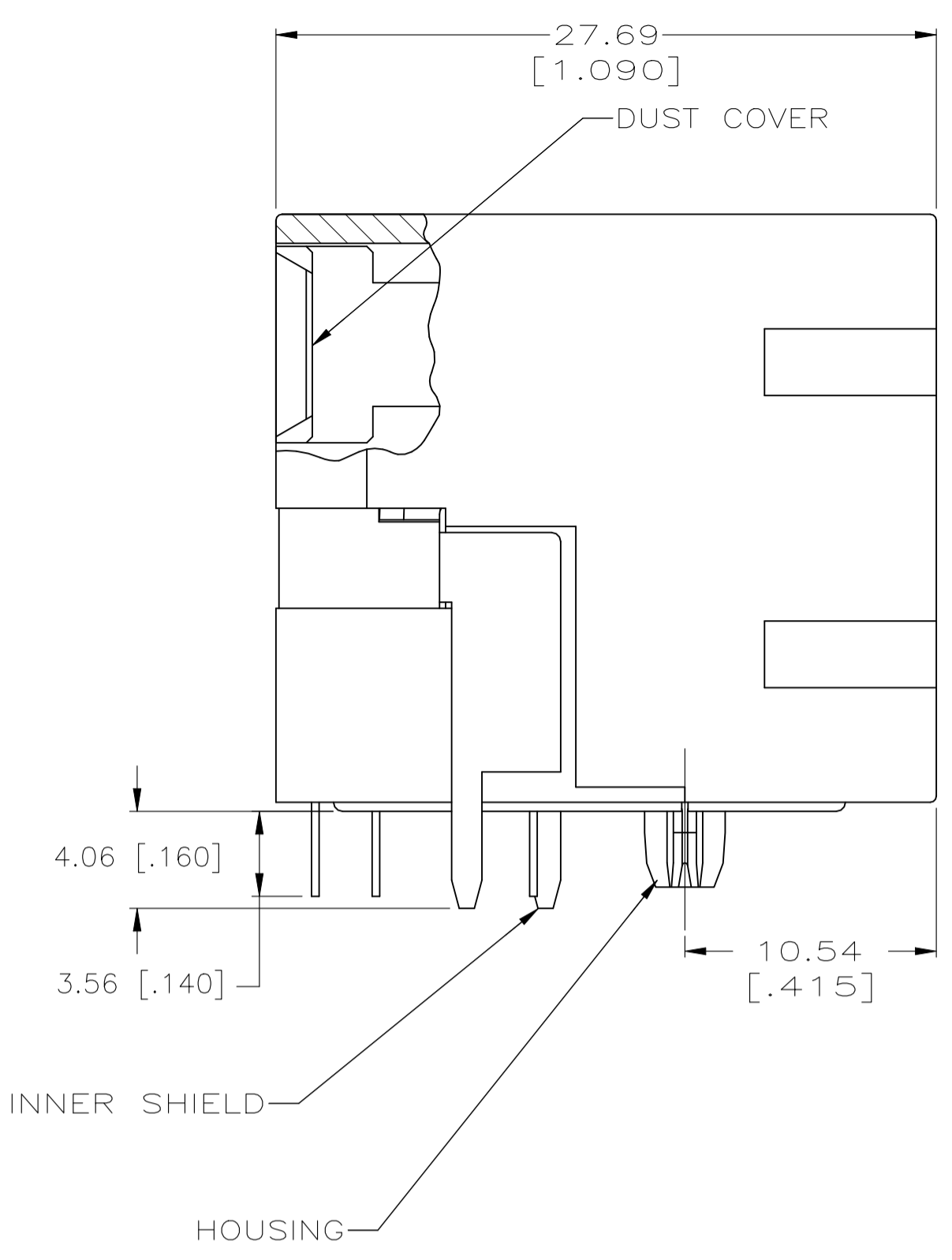


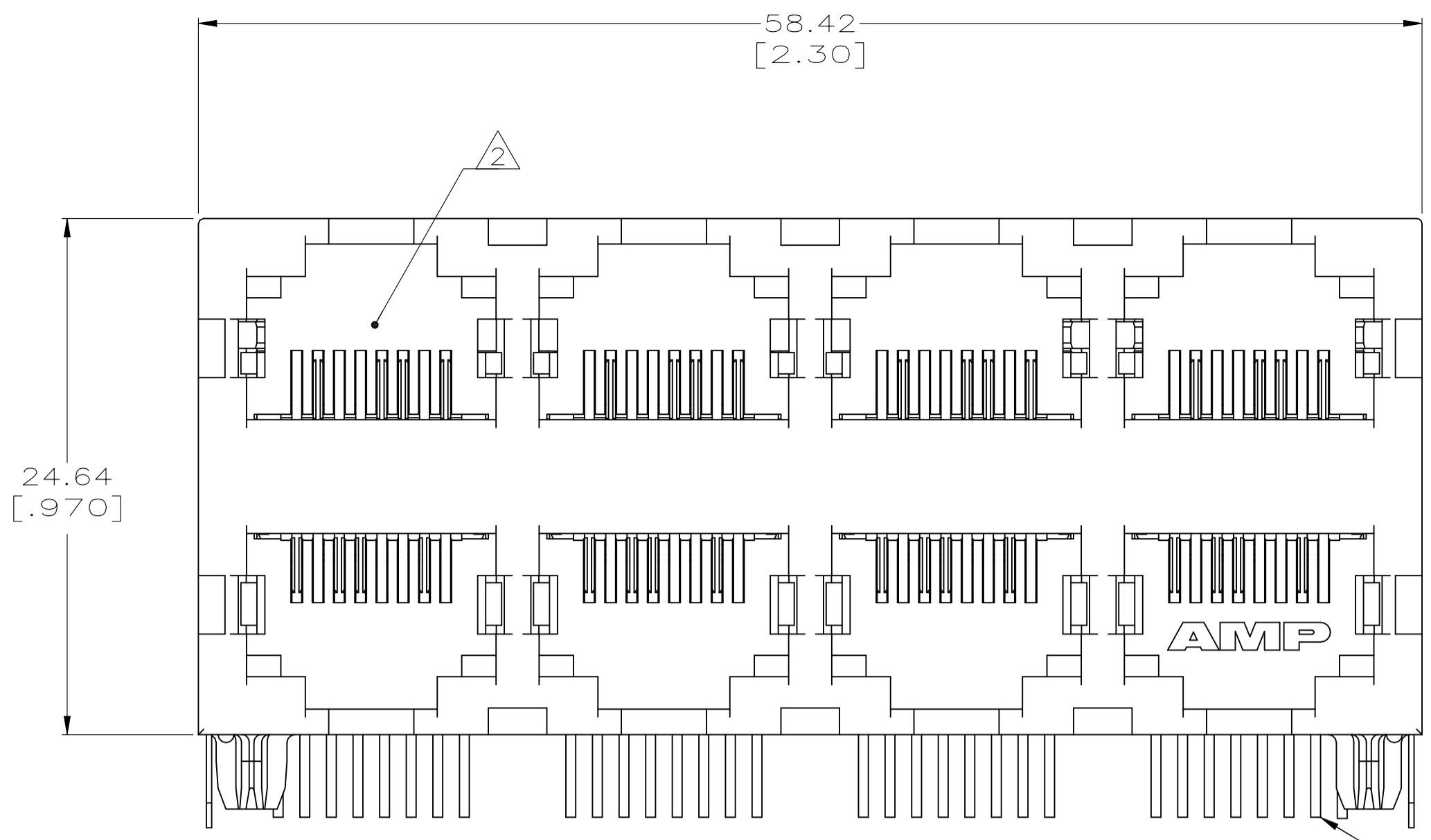
REVISIONS					
REV	DATE	DESCRIPTION	BY	CHK	APP'D
A1	19APR2023	REVISED AS PER ECR-23-169440	JK	WH	



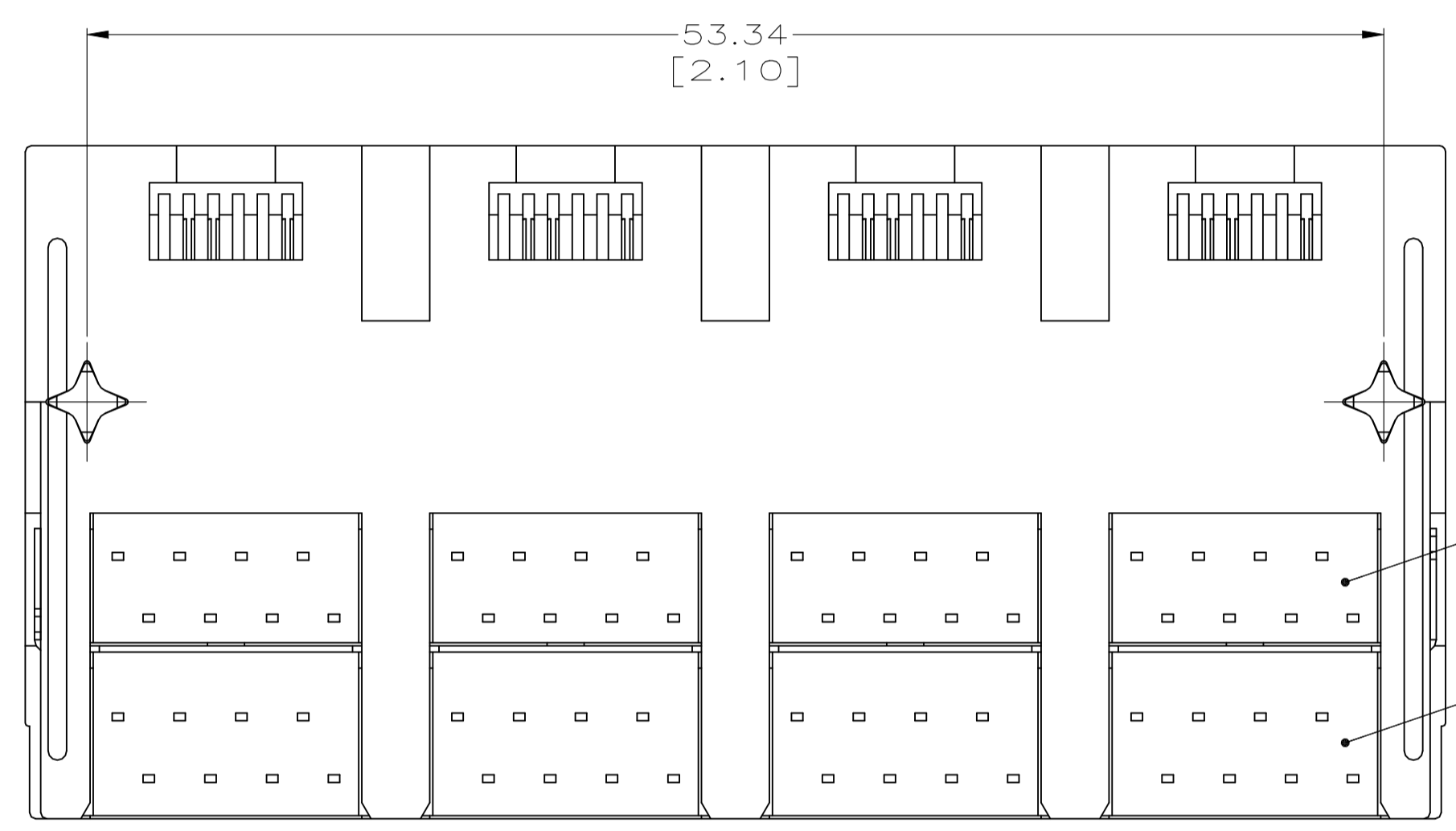
PARTIAL REAR VIEW



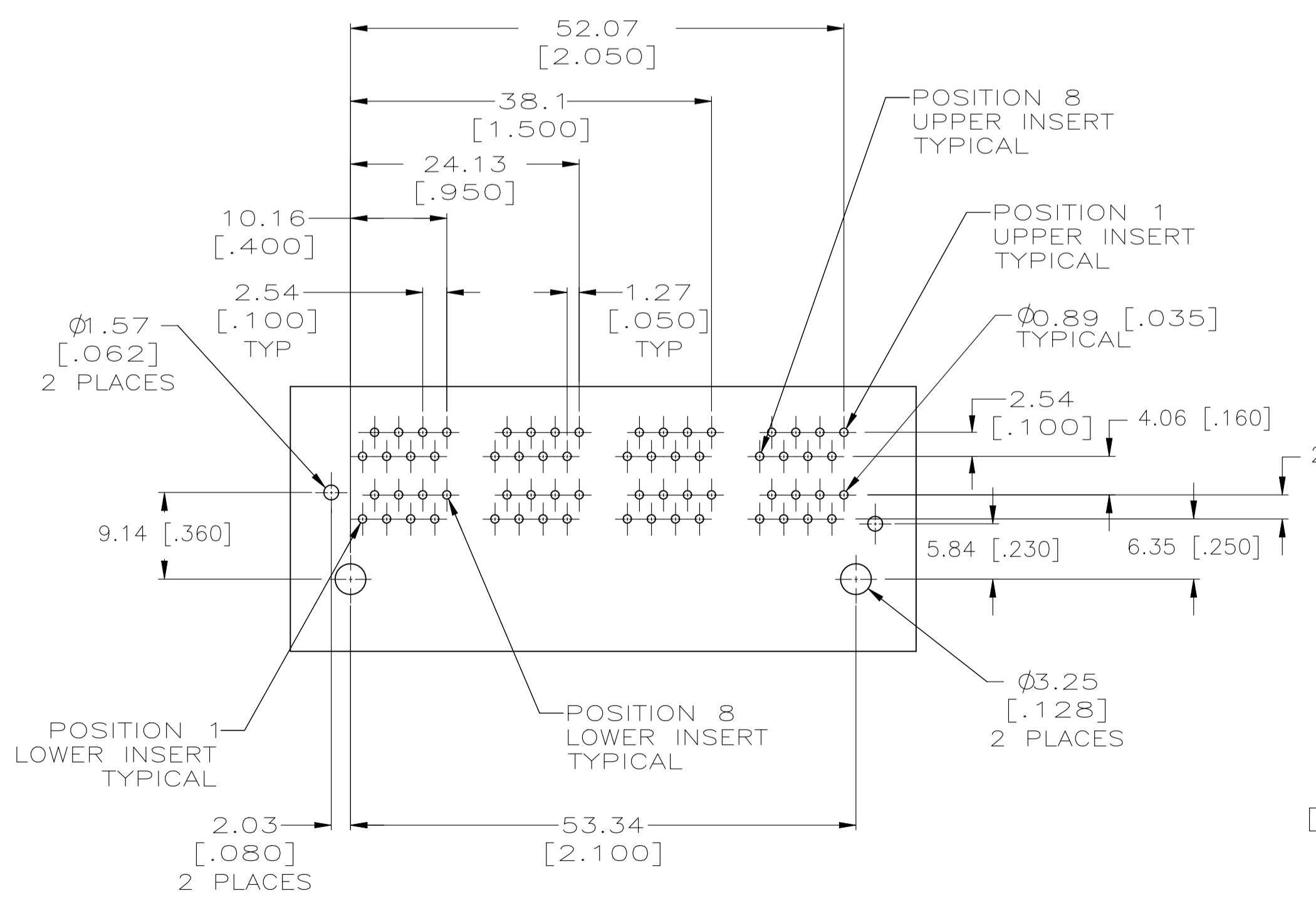
INNER SHIELD
HOUSING



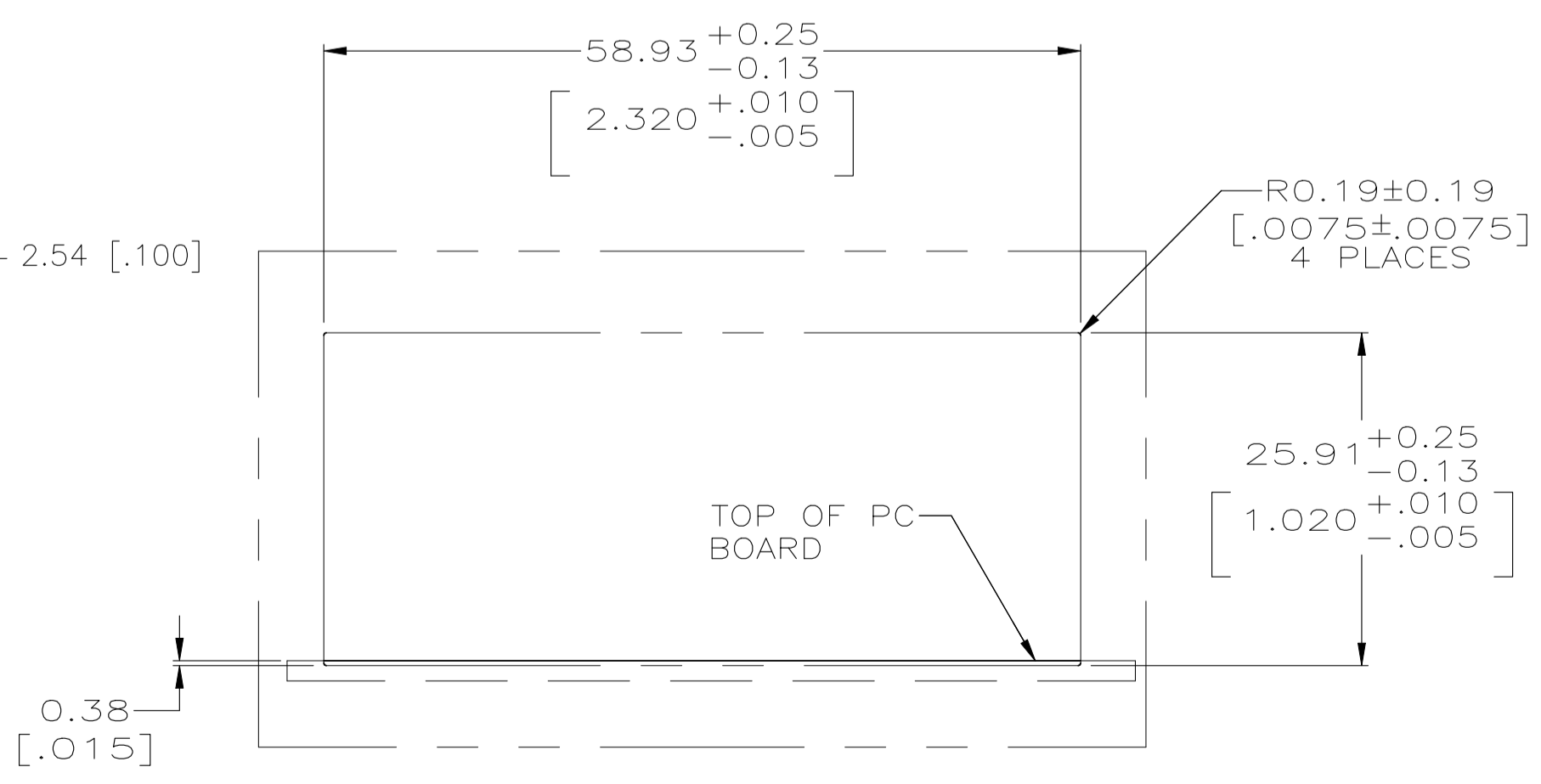
- 1 MATERIAL:
HOUSING - PCT POLYESTER, BLACK, UL94V-0.
OVERMOLDED TERMINAL ARRAY - PBT, BROWN.
TERMINALS - 0.33 [.013] THICK PHOS BRONZE
PLATED WITH 1.27µm [.000050] MIN THICK
HARD GOLD IN LOCALIZED AREA AND 3.81µm
[.000150] MIN THICK MATTE TIN IN SOLDER
AREA OVER 1.27µm [.000050] MIN THICK
NICKEL UNDERPLATE.
OUTER SHIELD AND INNER SHIELD - 0.25 [.010]
THICK COPPER ALLOY PLATED WITH 2.03µm
[.000080] MIN THICK TIN OVER 1.27µm
[.000040] MINIMUM THICK NICKEL.
- 2 JACK CAVITY CONFORMS TO FCC RULES AND
REGULATIONS, PART 68 SUBPART F.
- 3 DATE CODE LABEL LOCATED ON REAR OF PART
APPROXIMATELY AS SHOWN:
FIRST 2 DIGITS ARE LAST 2 DIGITS OF YEAR,
SECOND 2 DIGITS ARE MANUFACTURING
WORK WEEK,
LAST DIGIT IS DAY OF WEEK, WITH SUNDAY = 1.



LOWER INSERT
QUANTITY 4
UPPER INSERT
QUANTITY 4



PC BOARD LAYOUT VIEWED FROM COMPONENT SIDE
SCALE 2:1



SUGGESTED PANEL CUTOUT DIMENSIONS
SCALE 2:1

THIS DRAWING IS A CONTROLLED DOCUMENT.		DIN A FERNANDEZ-DOCKS 13JUN2005		TE Connectivity	
DIMENSIONS: mm [INCHES]		TOLERANCES UNLESS OTHERWISE SPECIFIED:			
0. PLC ± - 1. PLC ± - 2. PLC ± 0.25[.01] 3. PLC ± 0.13[.005] 4. PLC ± - ANGLES ± -		APVD J. WESTMAN 13JUN2005 S. FLICKINGER NAME PRODUCT SPEC 108-1163-2 APPLICATION SPEC 114-2048		5569252-1 PART NUMBER	
MATERIAL		FINISH		SIZE CAGE CODE DRAWING NO WEIGHT 0.000000 A1 00779 C=5569252 CUSTOMER DRAWING SCALE 4:1 SHEET 1 of 1 REV A1	