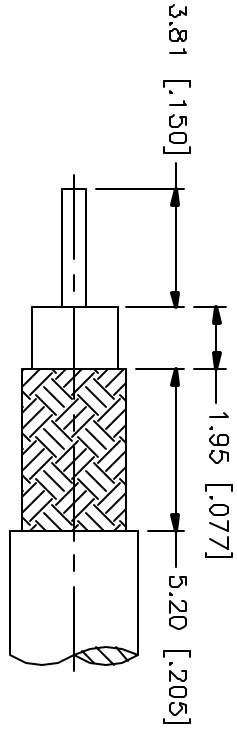
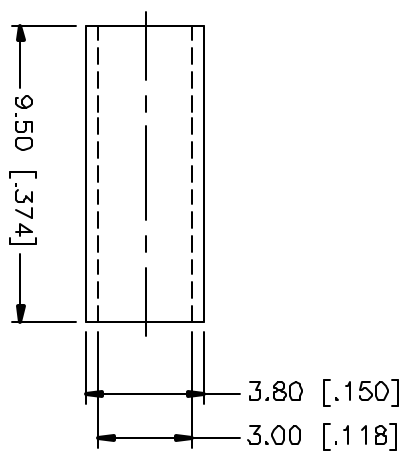
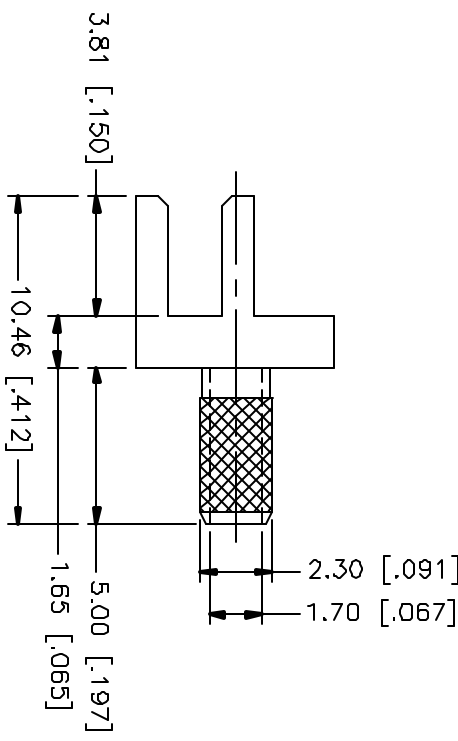
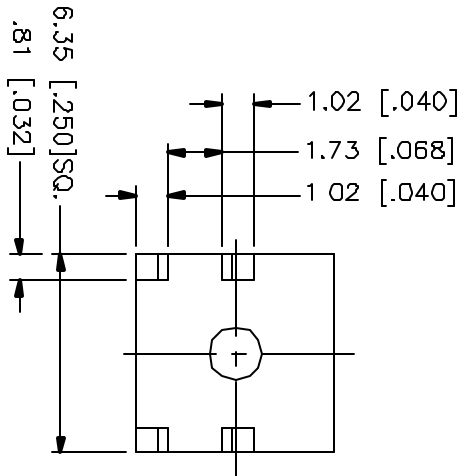


REV.	DATE	DESCRIPTION
NC	03/26/01	INITIAL RELEASE



RECOMMENDED  
CABLE STRIPPING DIM'S



CRIMP NOTES:  
1. CRIMPED FERRULE  
HEX CRIMP SIZE .128"

DESCRIPTION	MATERIAL	FINISH	UNLESS OTHERWISE SPECIFIED DIMENSIONS ARE IN MILLIMETERS FOR CUSTOMER REFERENCE ONLY	APPROVALS	DATE	TITLE
1 BODY	BRASS	GOLD	UNLESS OTHERWISE SPECIFIED TOLERANCES FOR MILLIMETERS ARE: 0.5-6 = ± 0.2 6-30 = ± 0.4 30-120 = ± 0.6 120-315 = ± 1 315-1000 = ± 1.6 1000-2000 = ± 2.4	DRAWN	03/26/01	<b>comnex</b> Connector Corporation PCB MOUNT CABLE TERMINAL (FOR RG-174/U, 188A/U, 316/U CABLE)
2 FERRULE	COPPER	GOLD		CHECKED		
3				ISSUED		
4						
5						
6						
7						
8						

SCALE	NA	PART NO.	142304	SHEET	1 OF 1
SIZE	A	FROM NO.	99001	DWG. NO.	142304.DWG
REV.	NC				