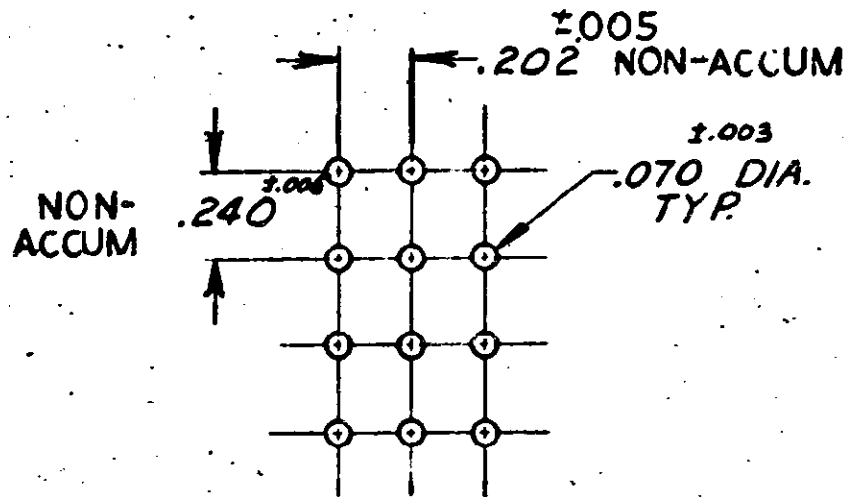
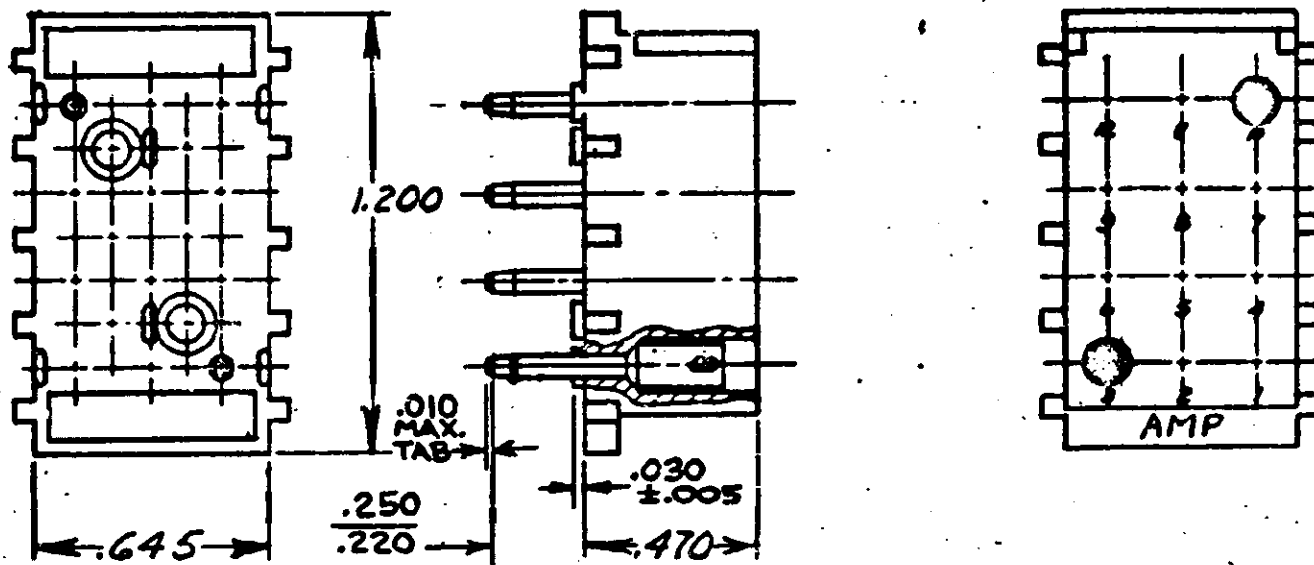


3. DIMENSION SHOWN REPRESENT PRODUCT IN DRY CONDITION. ADDITIONAL 2% GROWTH DUE TO END USE LOCATION MOISTURE ABSORPTION MAY OCCUR AND SHOULD BE ACCOUNTED FOR.



RECOMMENDED LAYOUT FOR .125 THICK P.C. BOARD

1. MATES WITH HOUSING 480278
2. PARTS COMPLY WITH AMP SOLDERABILITY SPEC. NO. 109-11-3

9-350578-2	NYLON - BLACK	PHOS BR2 - GOLD
8-350578-2	- GRAY	-
7-350578-2	- VIOLET	-
6-350578-2	- BLUE	-
5-350578-2	- GREEN	-
4-350578-2	- YELLOW	-
3-350578-2	- ORANGE	-
2-350578-2	- RED	-
1-350578-2	- BROWN	-
350578-2	- NATURAL	- GOLD
9-350578-1	- BLACK	- PRE-TIN
8-350578-1	- GRAY	-
7-350578-1	- VIOLET	-
6-350578-1	- BLUE	-
5-350578-1	- GREEN	-
4-350578-1	- YELLOW	-
3-350578-1	- ORANGE	-
2-350578-1	- RED	-
1-350578-1	- BROWN	-
350578-1	NYLON - NATURAL	PHOS BR2 - PRE-TIN

ASSEMBLY NO. HSG. MATL & COLOR PIN MATL & FINISH

F2	REVISED PER ECR-21-117185	PJ	VS	20OCT2021
F1	RESTORED	PK	ZS	11/1/85
F	REV. PER M-7376	SS	GV	1/20/85
E	REVISED M-4161	MF	DA	11/17/77
D	ECN M-3871	PK	DA	7-76
C	ECN M-3452	GY	TE	11/16/76
B	RELEASED FOR PROD	WH	DA	11/16/76
A	ECN M-3156	PK	DA	11/16/76
-	PER ECN M-2996	PK	DA	11/16/76
LTR	REVISION RECORD	DR	CHK	DATE

350578	REQUIRED PER ASSEMBLY
	DESCRIPTION

© 1973 BY AMP INCORPORATED. ALL RIGHTS RESERVED. AMP PRODUCTS COVERED BY PATENTS AND/OR PATENTS PENDING.

DR: 6-6-73  
9. Edb...

CHK: 6-11-73  
P. Oranger

DE: 6/11/73  
M. P. H...

MP: 6/11/73  
M. P. H...

MATERIAL AND FINISH: SEE TABLE

WIRE - RANGE - INSULATION: # # #

TOLERANCE EXCEPT AS NOTED: ±.013 ±1° 0'

SCALE: +

CLASS: #

TYPE: #

TE Connectivity

CM B NO 350578

NAME: 12 CIRCUIT MATE-N-LOK P.C. BOARD SOCKET HEADER

DIMENSIONS IN INCHES. DO NOT SCALE PRINT.