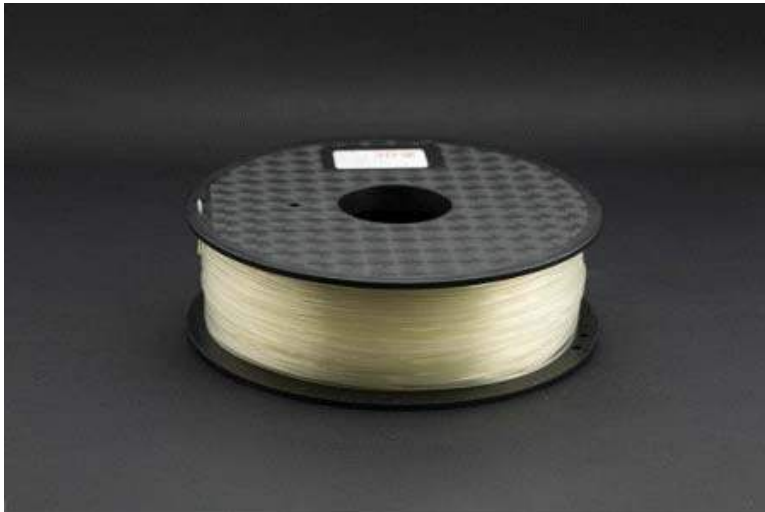




# Superior 1.75mm PLA - Crystal (1kg)

SKU: FIT0292-C



## INTRODUCTION

This is a superior quality 1.75mm PLA filament which is commonly used by reppap, Makerbot, Mendel, Huxley UP! Printer, WeisTek and Thing-o-matic 3D printers. It comes with one spool that can be easily attached on 3D printer.

PLA is a wonderful filament. It is the most environmentally friendly material available for this type of 3D printing, and it comes in a wide range of colors.

Polylactic acid or polylactide (PLA) is a thermoplastic aliphatic polyester derived from renewable resources, such as corn starch, tapioca roots, chips or starch, or sugarcane. It can biodegrade under certain conditions.

As the extrusion head temperature will vary from 3D printer to 3D printer design, temperature differences will affect the result of your print, we suggest PLA use an optimal temperature range of 215°C to 225°C. Please make the appropriate adjustments to temperature before you print with PLA, some testing might be required to find your optimal print settings.

## SPECIFICATION

- Diameters: 1.75mm
- Weight: 1kg
- PLA Parameter

- Physical Property Typical value
- Tensile Strength@Yield 46Mpa
- Tensile Elongation@Break 20%
- Flexural Strength 70Mpa
- Flexural Modulus 3212Mpa
- Notched Izod Impact(23°C) 5.2kj/m<sup>2</sup>
- HDT@66psi 58°C
- density 1.31g/cm<sup>3</sup>
- MFR 10-14g/10min
- Accuracy 1.75±0.1mm

## **SHIPPING LIST**

- 1.75mm PLA - Crystal (1kg) x1