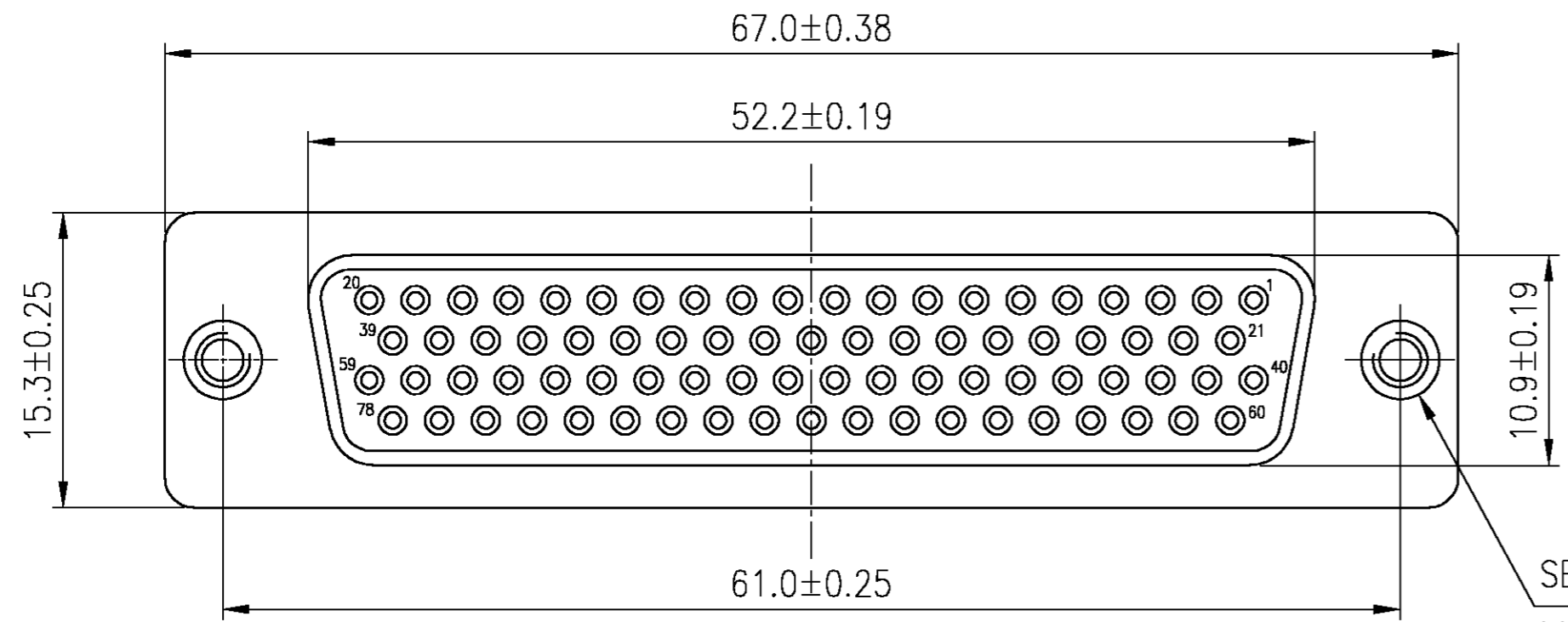
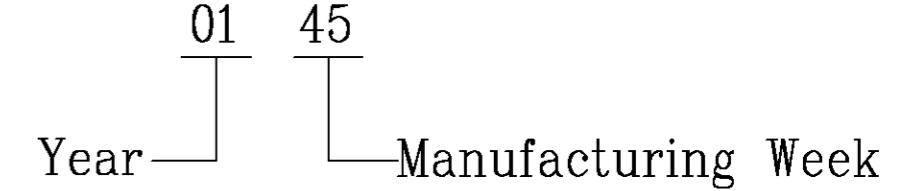


THIS DRAWING IS UNPUBLISHED. RELEASED FOR PUBLICATION
 © COPYRIGHT BY TYCO ELECTRONICS CORPORATION. ALL RIGHTS RESERVED.

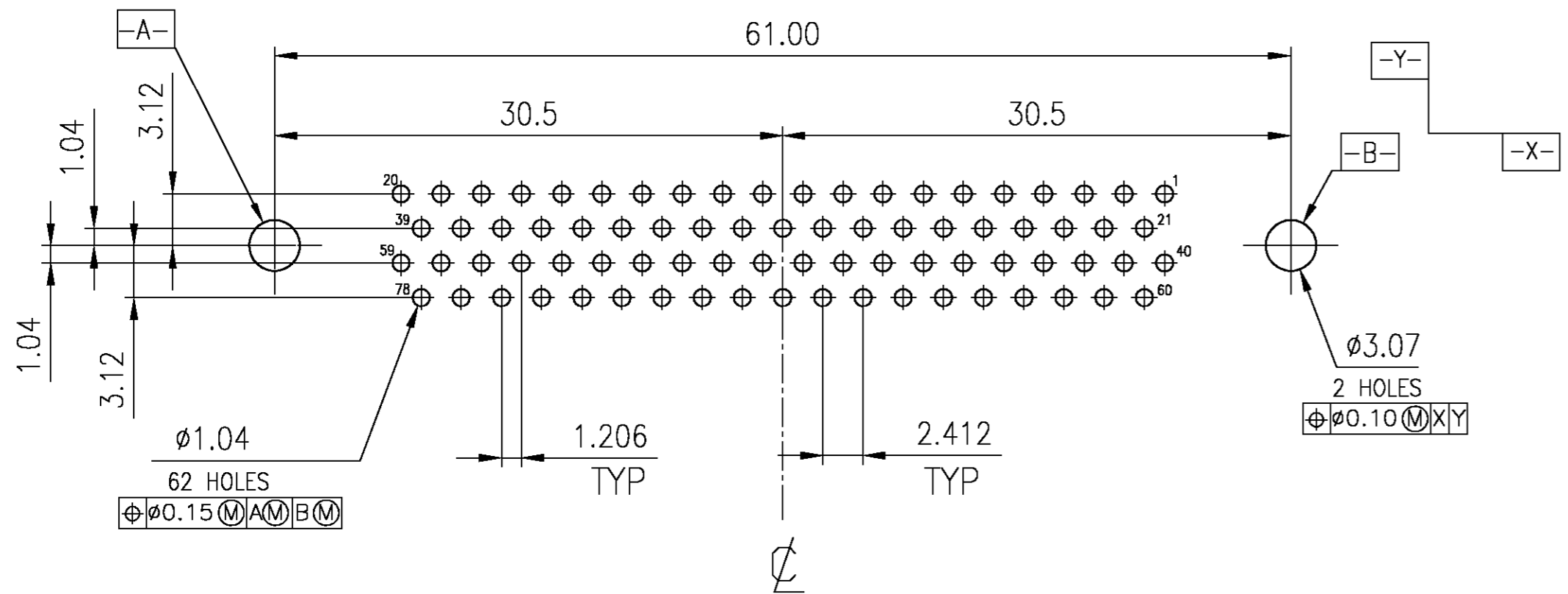
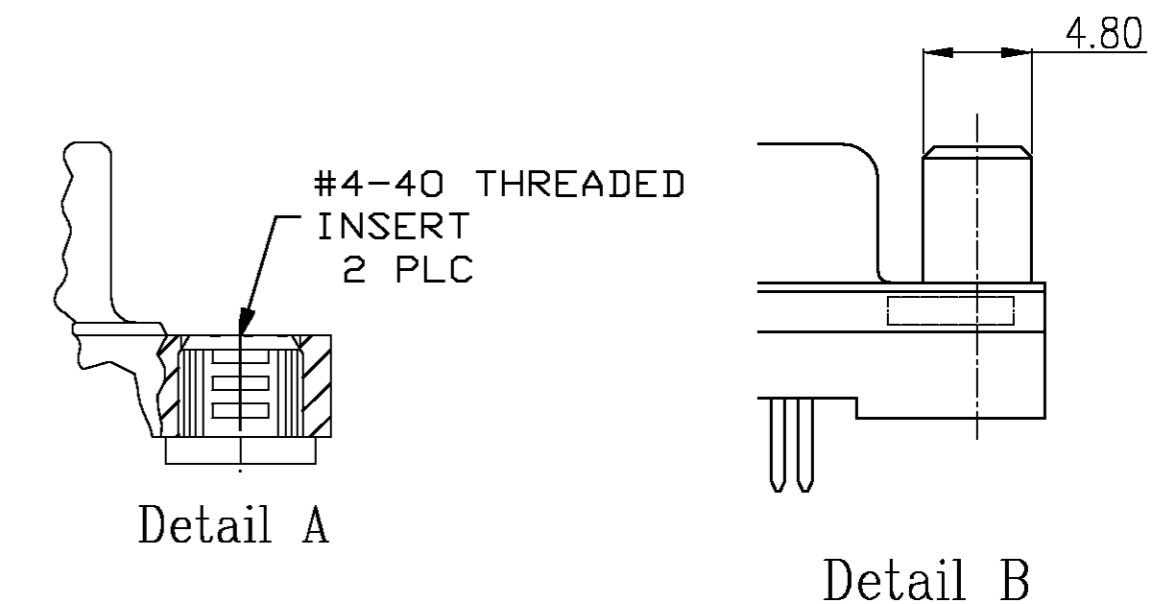
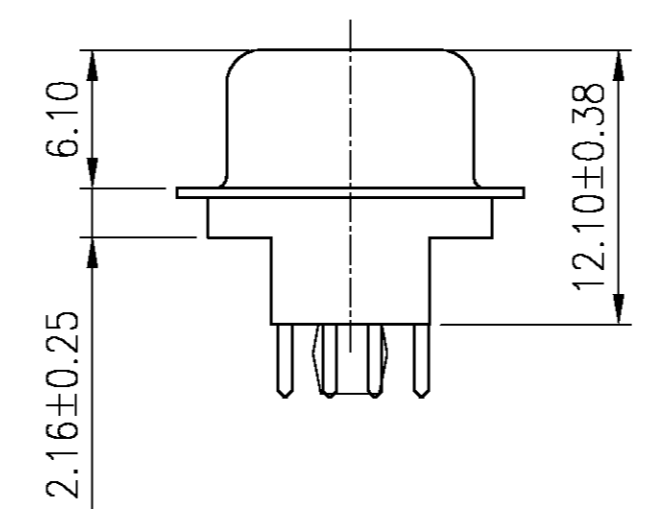
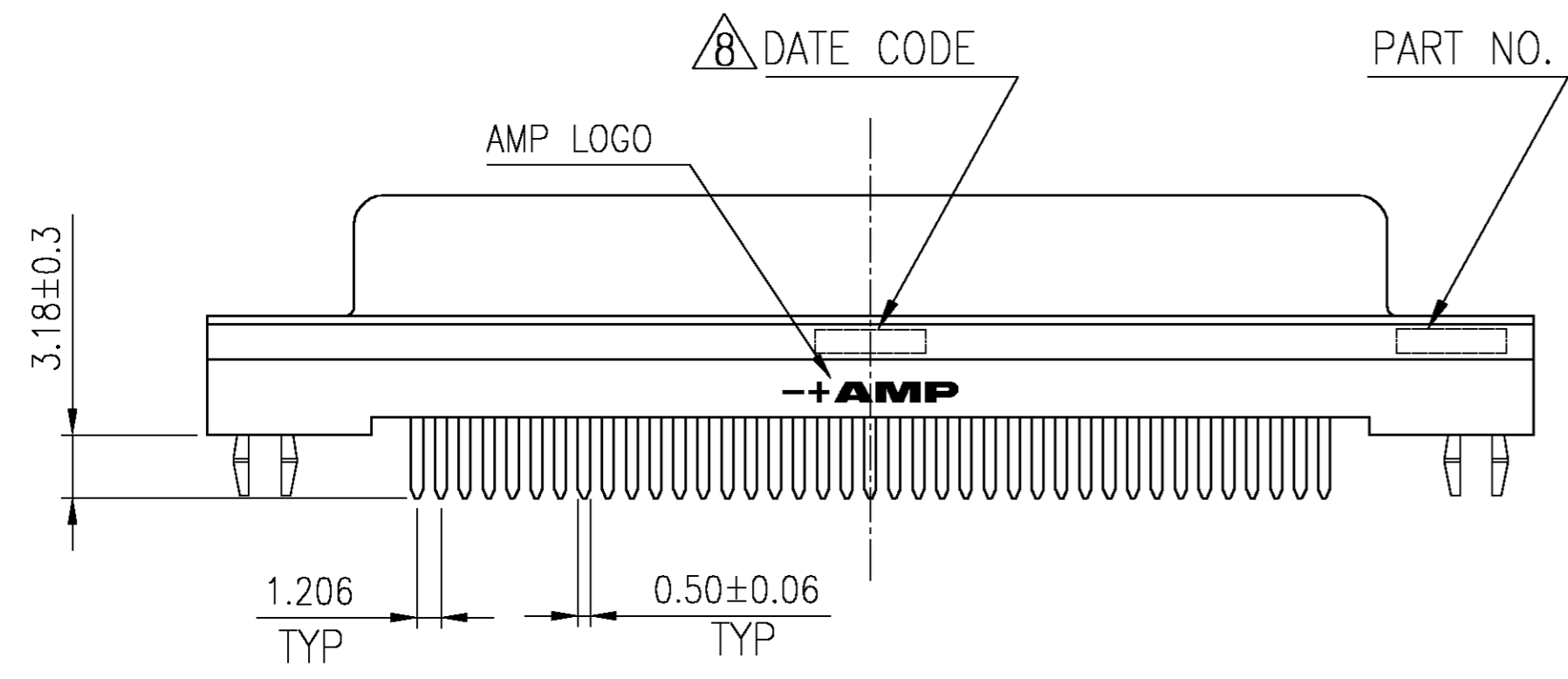
LOC		DIST		REVISIONS				
GP	0	P	LTR	DESCRIPTION		DATE	DWN	APVD
		N		REVISED PER EC OS11-0057-04		26FEB04	JB	CC

MATERIAL:

- Housing: PBT , 30 % G.F polyester, Black. (UL 94V-0 Rated)
 - Contact: Phos. Bronze.
 - Contact Plated: Gold plated over 50u" Nickel underplated.
 - Solder Tail: Sn/Pb plated 120u" over 50u" Nickel underplated.
 - Shell: Steel, Nickel plated.
 - Rivet: Brass, Nickel plated 30u" Min.
- ⚠ 4-40 Retention Inserts, 2 places as shown.
 ⚠ 8 Four digit date code in this format.



SEE TABLE FOR MOUNTING FLANGE CONFIG



RECOMMENDED PCB LAYOUT

YES	Tray	Detail B	30 μ"	1-748831-1
NO	Tray	Detail A	Gold flash	⚠ 1-748831-0
NO	Tray	Detail A	15 μ"	⚠ 748831-9
NO	Tray	Detail A	30 μ"	748831-1
Retention Pegs	Packaging	Mounting Flange Config	Contact Finish	AMP Part NO.

THIS DRAWING IS A CONTROLLED DOCUMENT.

DIMENSIONS: MM	TOLERANCES UNLESS OTHERWISE SPECIFIED:	DWN: J.BURWELL	OBJULY02	Tyco Electronics Corporation Harrisburg, PA
0 PLC ± - 1 PLC ± 0.30 2 PLC ± 0.20 3 PLC ± 0.10 4 PLC ± - ANGLES ± 2° FINISH -	PRODUCT SPEC - APPLICATION SPEC - WEIGHT -	CHK: C.CASH	OBJULY02	
MATERIAL: -		APVD: -		NAME: AMPLIMITE HD-22 78 POS RECEPTACLE, VERTICAL
CUSTOMER DRAWING		SCALE: 3:1	SHEET 1 OF 1	RESTRICTED TO: -