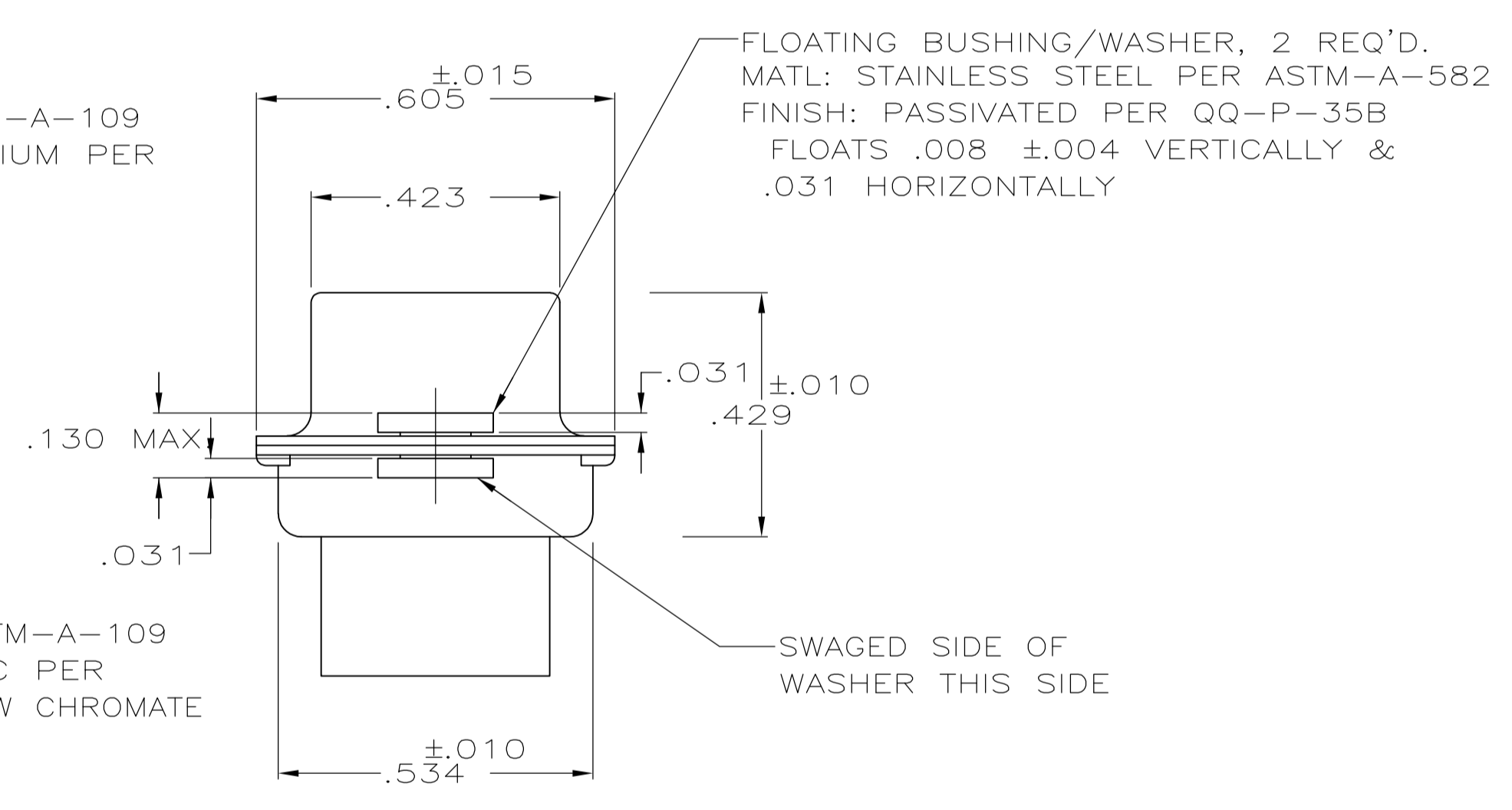
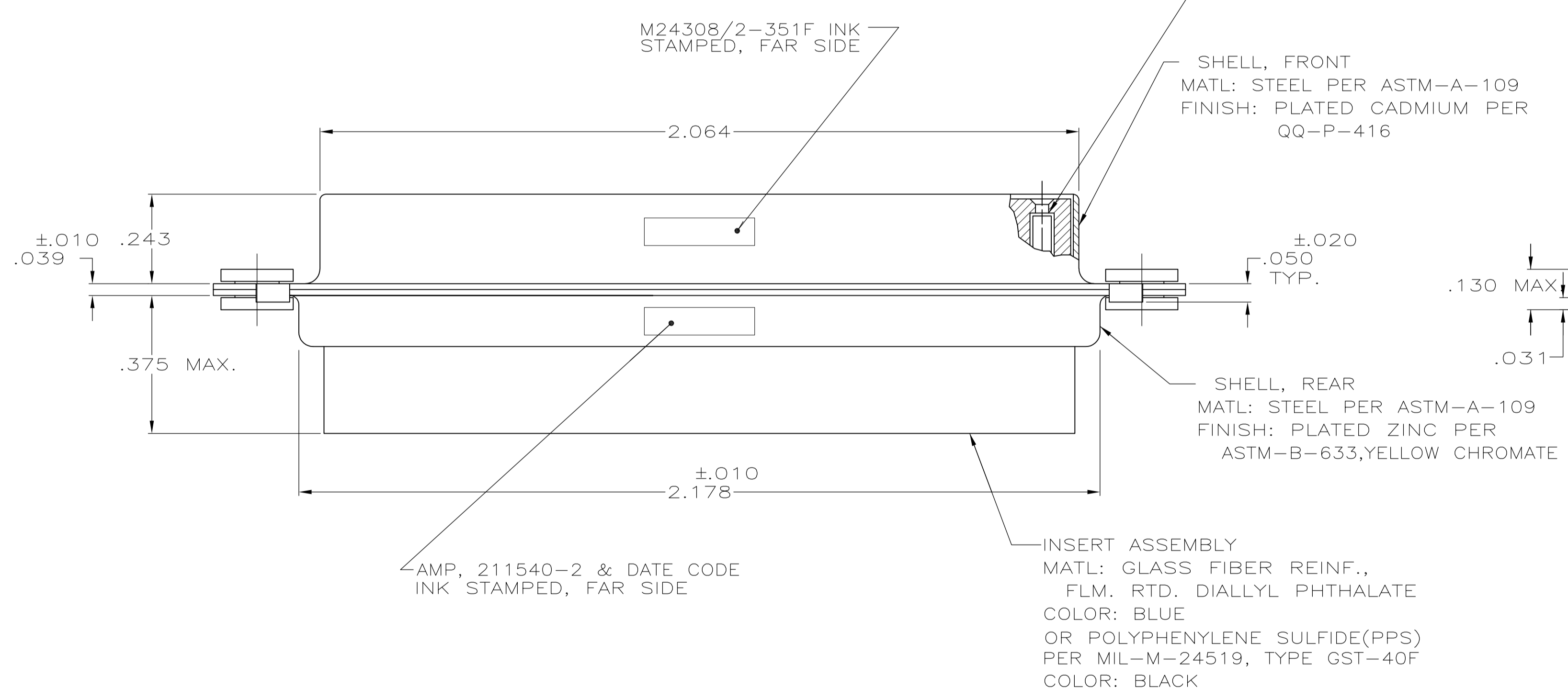


SOCKET CONTACT, SIZE 22, 78 REQD.  
 BODY-MATL: BERYLLIUM COPPER PER QQ-C-530  
 FINISH: PLATED GOLD .00050 MIN. THK.  
 PER MIL-G-45204 OVER NICKEL .00050 MIN.  
 THK. PER QQ-N-290  
 HOOD-MAT'L: STAINLESS STEEL PER QQ-S-766  
 FINISH: PASSIVATED PER QQ-P-35B



- THIS RECEPTACLE WILL MATE WITH ANY 78 POSN., SIZE 5 PLUG IN AMPLIMITE SERIES.
- MAXIMUM WIRE INSULATION TO BE USED WITH THIS RECEPTACLE IS .054 DIA.
- SST RETENTION CLIPS ARE INCLUDED IN INSERTS.

- ④ PACKAGE STAMPED M24308/2-491F & AMP P/N 211540-1
- ⑤ PACKAGE STAMPED M24308/2-351F & AMP P/N 211540-2
- ⑥ PACKAGE STAMPED M24308/2-362F & AMP P/N 211540-3
- ⑦ AMP P/N 204351-1; MIL P/N 57-354, INCLUDED IN KIT
- ⑧ AMP P/N 91067-1; MIL P/N M81969/1-04
- ⑨ CONNECTOR SUPPLIED WITHOUT CONTACTS; SHOWN FOR ILLUSTRATION ONLY.
- ⑩ UL/CSA DESIGNATION STAMPED IN THIS AREA, OPTIONAL

SUPSD BY 204544-2 & 91067-1	SAME AS -1 EXCEPT: ⑥ ⑦ ⑧	211540-3
	SAME AS -1 EXCEPT: ⑤ ⑦	211540-2
	AS SHOWN ④ ⑨	211540-1

THIS DRAWING IS A CONTROLLED DOCUMENT.		DIN D ERDMAN 7-14-85	Tyco Electronics Corporation Harrisburg, PA 17105-3608	
DIMENSIONS: INCHES		CHK R. GRZYBOWSKI 9-20-85	NAME L. ROPIER	
TOLERANCES UNLESS OTHERWISE SPECIFIED:		APVD	PRODUCT SPEC	
0. PLC ± -		APPLICATION SPEC		
1. PLC ± -		SIZE		
2. PLC ± -		CASE CODE		
3. PLC ± .005		DRAWING NO.		
4. PLC ± -		RESTRICTED TO		
ANGLES ± -		A1 00779 C=211540		
MATERIAL SEE CALLOUT		WEIGHT		
FINISH SEE CALLOUT		CUSTOMER DRAWING		
		SCALE NTS		SHEET 1 OF 1