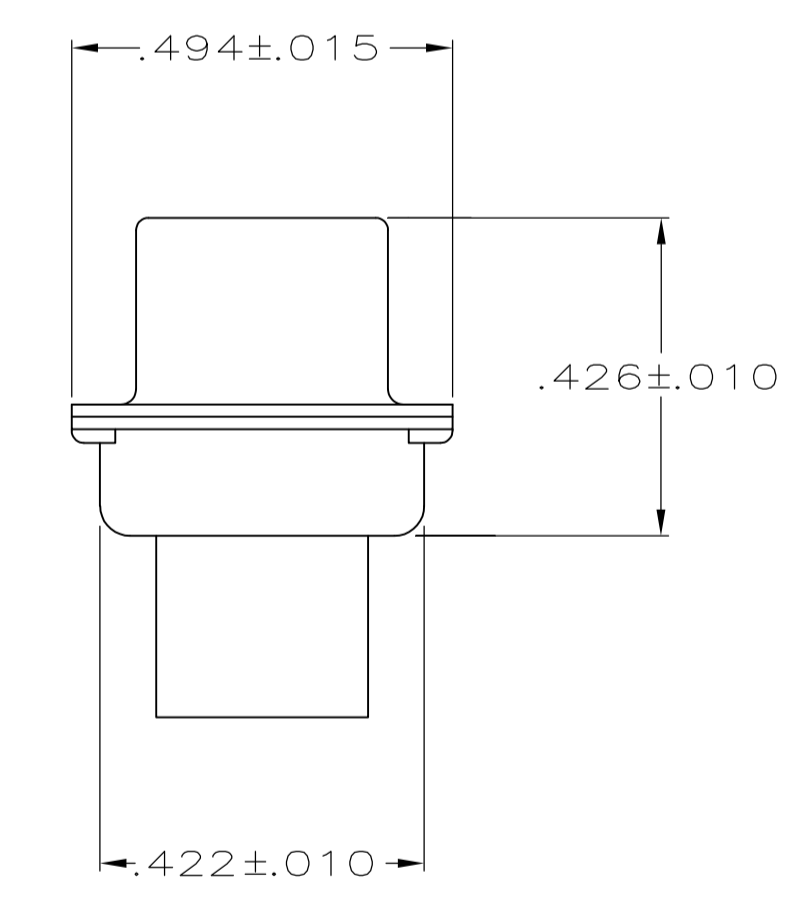
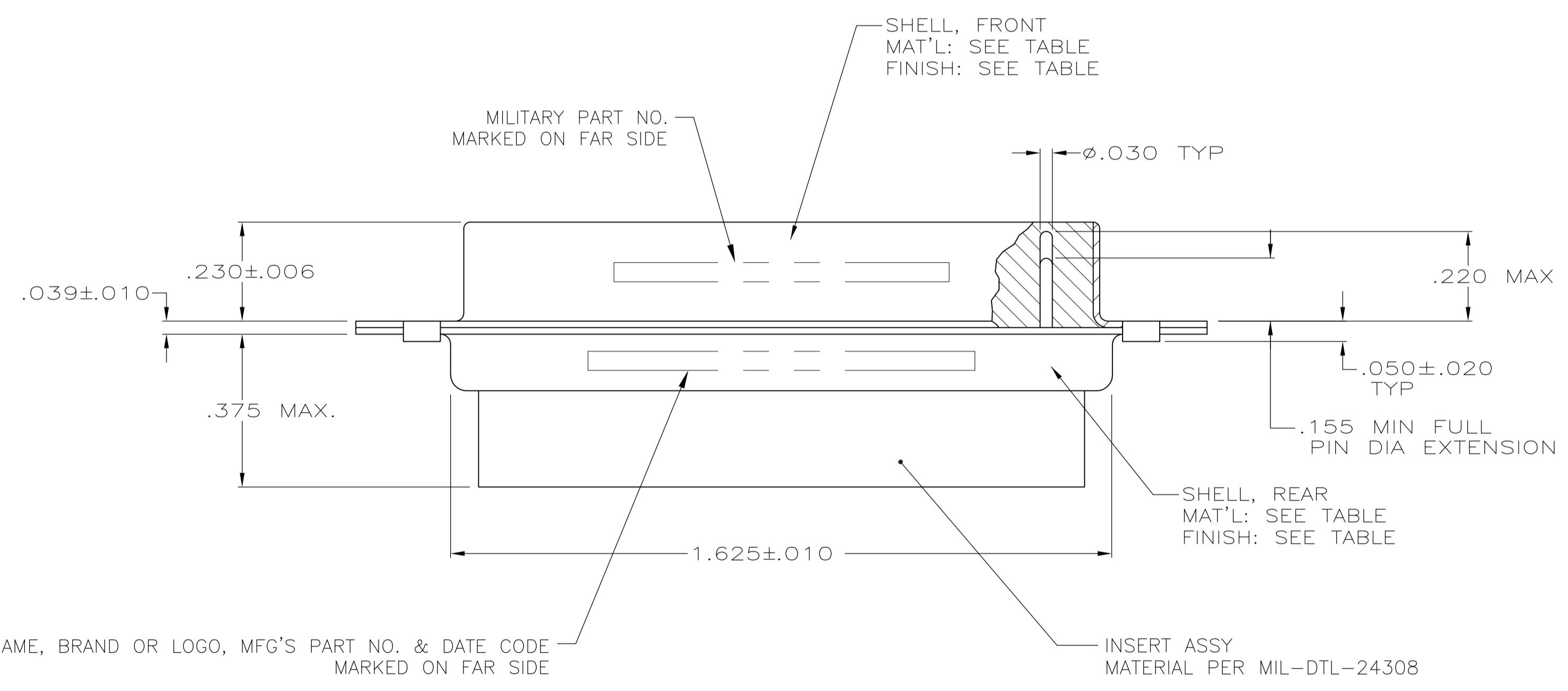
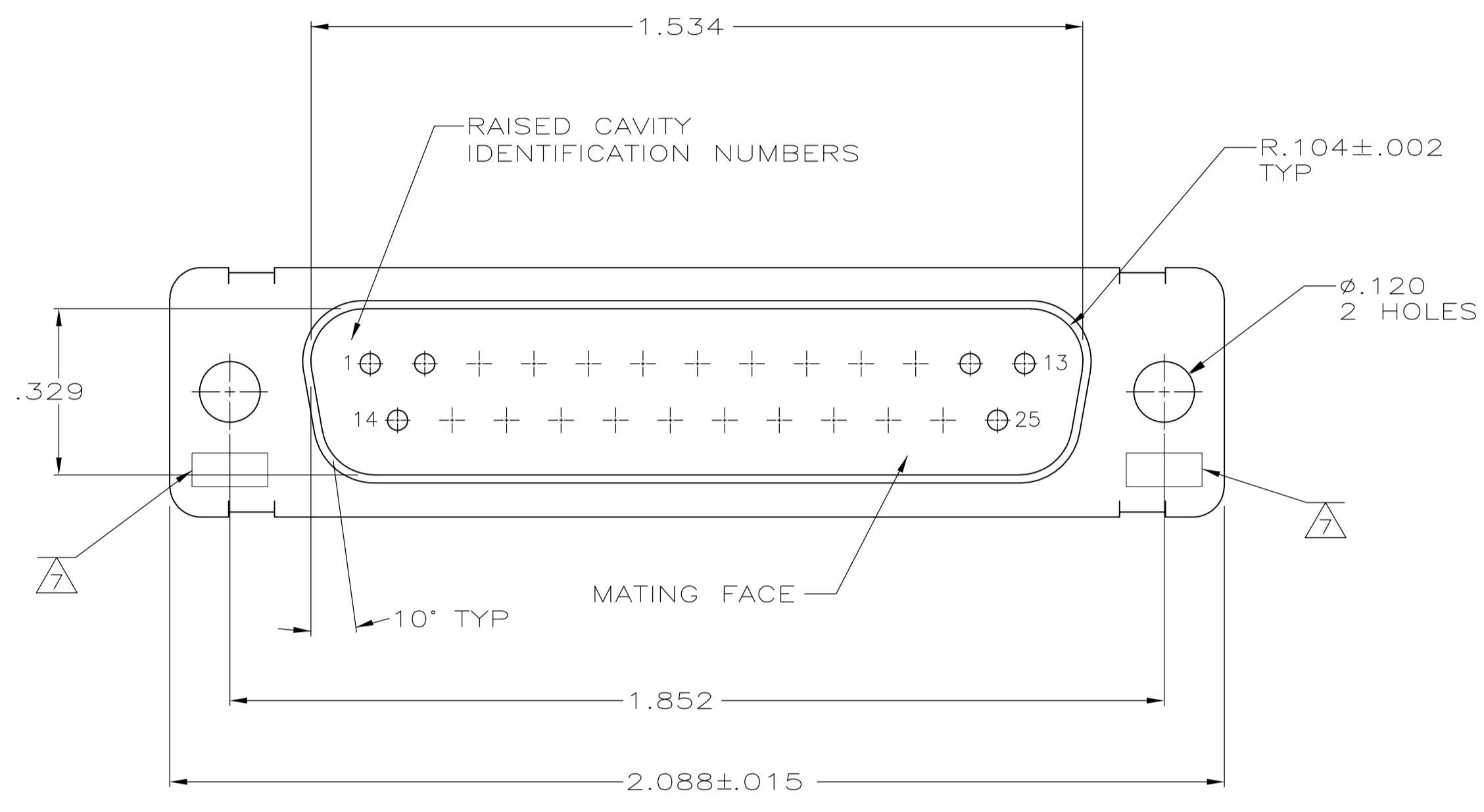


LOC		DIST		REVISIONS			
P	LTR	DESCRIPTION	DATE	DNW	APVD		
S		REV PER ECO-15-016062	10NOV15	KG	CD		

1. THIS PLUG IS DESIGNED TO CONFORM TO THE LATEST ISSUE OF MIL-C-24308.
2. MAXIMUM WIRE INSULATION TO BE USED WITH THIS PLUG IS  $\phi.068$ .
3. STAINLESS STEEL RETENTION CLIPS ARE INCLUDED IN INSERTS.
- ~~4. PACKAGE STAMPED M 24308/4 261F.~~
5. THIS PLUG WILL ACCEPT SIZE 20 PIN CONTACT M39029/64-369 OR ANY TYCO HD-20 PIN CONTACT.
- 6 MFG'S PART NO. STAMPED ON CONNECTOR REPRESENTS KIT NUMBER WITH CONTACTS.
- 7 UL/CSA DESIGNATION STAMPED IN THIS AREA.
- ~~8 TE CONNECTIVITY, 205560-2, & DATE CODE INK STAMPED, FAR SIDE.~~
- ~~9 TE CONNECTIVITY, 205166-4 INK STAMPED, FAR SIDE.~~
- 10 FINISH: BRIGHT TIN PER ASTM-B-545 .000400-.000550 THK OVER COPPER PER AMS2418 .000050 MIN THK.
- 11 FRONT SHELL HAS GROUNDING INDENTS, 205166-4 ONLY, (NOT SHOWN).
- ~~12 M24308/4 F INK STAMPED, FAR SIDE.~~



MFG'S NAME, BRAND OR LOGO, MFG'S PART NO. & DATE CODE MARKED ON FAR SIDE

MILITARY PART NO. MARKED ON FAR SIDE

SHELL, FRONT MAT'L: SEE TABLE FINISH: SEE TABLE

SHELL, REAR MAT'L: SEE TABLE FINISH: SEE TABLE

INSERT ASSY MATERIAL PER MIL-DTL-24308

REMARKS	MILITARY PART NO. MARKED ON PACKAGE	MILITARY PART NO. MARKED ON CONNECTOR	MFG'S PART NO. MARKED ON CONNECTOR	FINISH	SHELL MATERIAL	PART NO.
-	-	-	205166-5	10	STEEL, CLASS G	205166-5
11	-	-	205166-4	10	STEEL, CLASS G	205166-4
SUPSD BY 206800-2	-	-	-	CADMIUM PER QQ-P-416	BRASS	205166-2
6	M24308/4-261F	M24308/4-3F	205560-2	CADMIUM PER QQ-P-416	STEEL, CLASS G	205166-1

THIS DRAWING IS A CONTROLLED DOCUMENT.

DIMENSIONS: INCHES

TOLERANCES UNLESS OTHERWISE SPECIFIED:

0 PLC	± .005
1 PLC	± .005
2 PLC	± .005
3 PLC	± .005
4 PLC	± .005
ANGLES	± .030°

MATERIAL: SEE CALLOUTS

FINISH: SEE CALLOUTS

WEIGHT: -

CUSTOMER DRAWING

SCALE: 4:1

SHEET: 1 OF 1

REV: S

DIN: C.C. THOMAS 08-DEC-87

CHK: F.C. BALLEW 10-DEC-87

APVD: F.C. BALLEW 10-DEC-87

NAME: AMPLIMITE PLUG FOR PIN CONTACTS HI-DENSITY HD-20 CONNECTOR SIZE 3 (25 POSN) SERIES 109

SIZE: A1

CAGE CODE: 00779

DRAWING NO: 205166

RESTRICTED TO: -

STE TE Connectivity