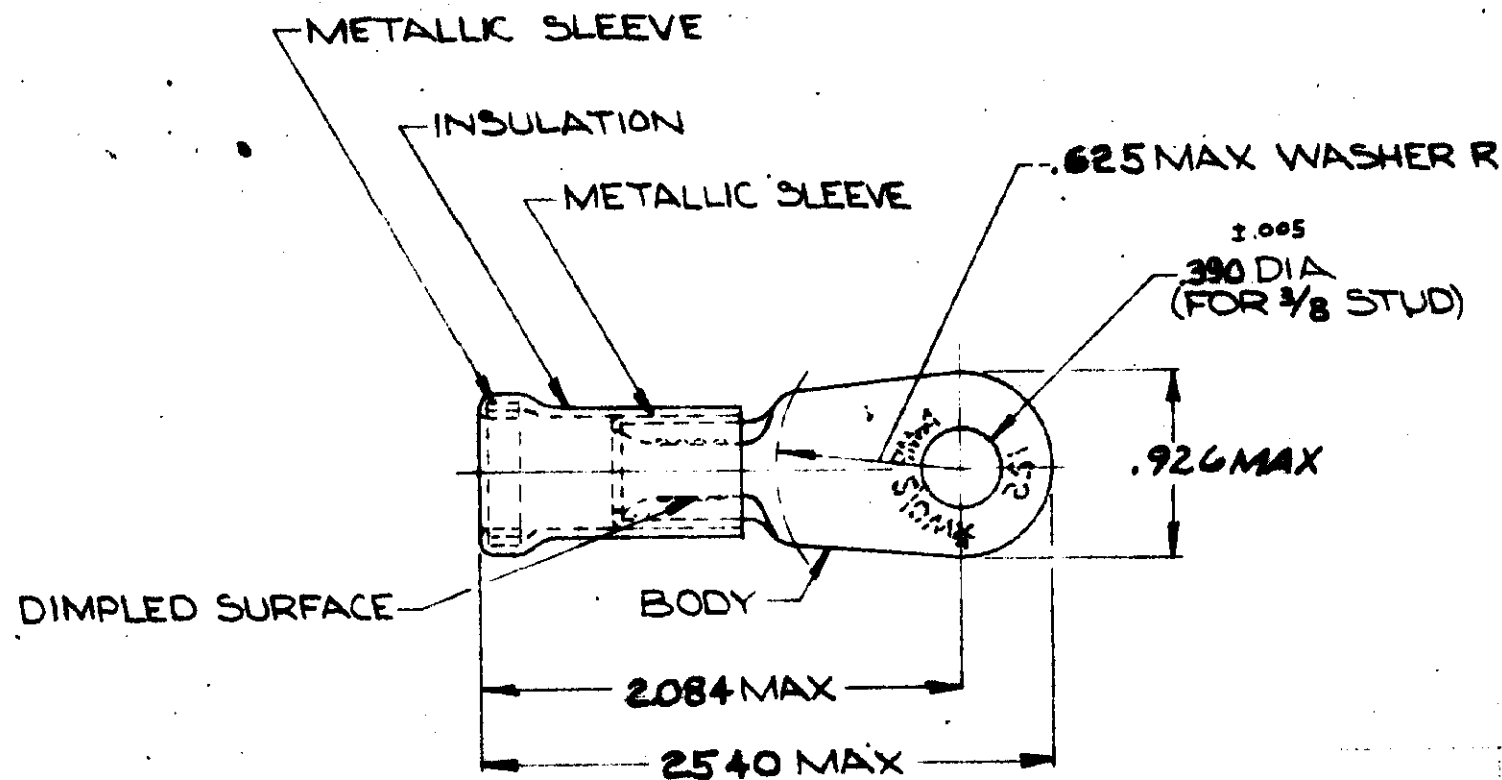


© 1953 BY AMP INCORPORATED. ALL RIGHTS RESERVED. AMP PRODUCTS COVERED BY PATENTS AND/OR PATENTS PENDING.

REVISIONS				
ZONE	LTR	DESCRIPTION	DATE	APPROVED
	C	REMOVED & REVISION 1	1-6-70	JML
	D	REVISED PER ECN PC-6864	6-18-72	AB
	E	REV G-4680	5-9-88	JT



TONGUE MATERIAL THICKNESS = $\pm .003$
 FOR .684 MAX WIRE INS. DIA

1	WIRE TERMINAL	322090	BODY: COPPER (QQ-C-576) TIN PL (MIL-T-10727)
			INSULATION: PVC COLOR: YELLOW
			METALLIC SLEEVE: COPPER (QQ-C-576)
			METALLIC BAND: STEEL QQ-S-638 (ASTM A103)
QTY	DESCRIPTION	PART NO.	MATERIAL & FINISH
UNLESS OTHERWISE SPECIFIED DIMENSIONS ARE IN INCHES TOLERANCES ON: DECIMALS $\pm .008$ ANGLES $\pm 5^\circ$		CONTRACT NO.	AMP INCORPORATED HARRISBURG, PENNSYLVANIA
MATERIAL		DR. <i>J. H. ...</i>	NAME WIRE TERMINAL AMPLI-BOND - RING TONGUE WIRE SIZE: 2/0
SEE TABLE		CHK <i>M. ...</i>	SIZE B
		APPD <i>J. ...</i>	CODE IDENT NO. 00779
		DSGN APPD <i>M. ...</i>	NUMBER 322090
		OTHER APPD	SCALE NTS
			SHEET 1 OF 1