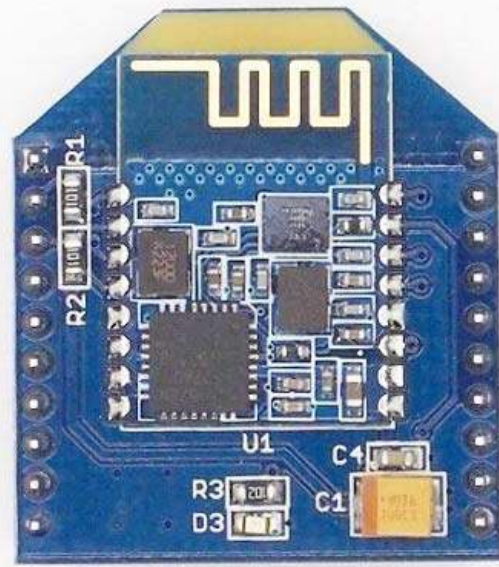


## BLE (dual) Bee v1.0



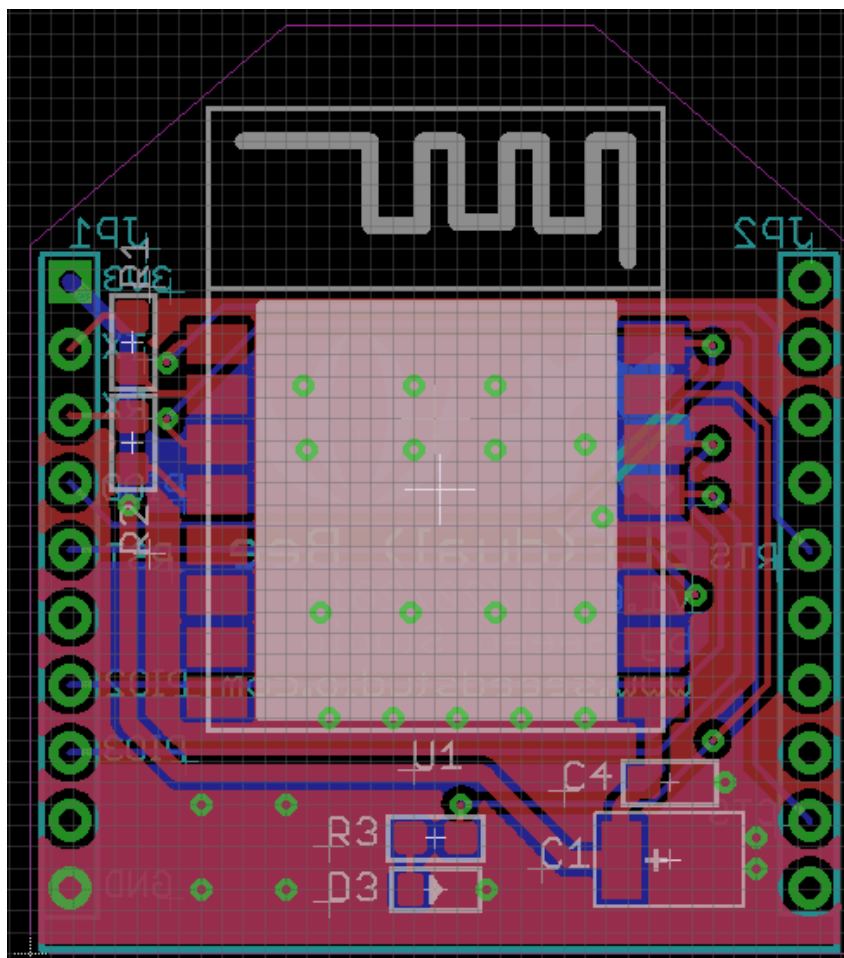
BLE (dual) Bee v1.0 uses CSR dual mode Bluetooth chip, with the ARM architecture single chip which supports AT instructions. Users can develop flexibly according to the serial baud rate, equipment name, pairing password.

### Features

- BT Version: Bluetooth Specification V4.0 & BLE
- UART send and receive max bytes is 512
- Other device to module in SPP mode: 90 Bytes per packet
- Other device to module in BLE mode: 20 Bytes per packet
- Two data transmission mode, balance mode and high speed mode
- Working frequency: 2.4GHz ISM band
- Modulation method: GFSK (Gaussian Frequency Shift Keying)
- RF Power: -23dbm, -6dbm, 0dbm, 6dbm.

- Speed: Asynchronous: 3K Bytes
- Synchronous: 3K Bytes
- Security: Authentication and encryption
- Service: Slave SPP, Peripheral BLE, UUID FFE0, FFE1
- Power: +3.3VDC 50mA
- Long range: SPP 30 meters, BLE 60 meters
- Power: SPP 13.5mA, BLE 9.5mA
- Working temperature: -5 ~ +65 Centigrade

## Specification



- **U1:** U1 is the wireless module, It includes automatic power on reset circuit.
- **D3:** The led display two work models: sleeping whit It slowly flashing; connected status whit It continuously lighting.
- **JP1&JP3:** The standard Bee connector.

## Cautions

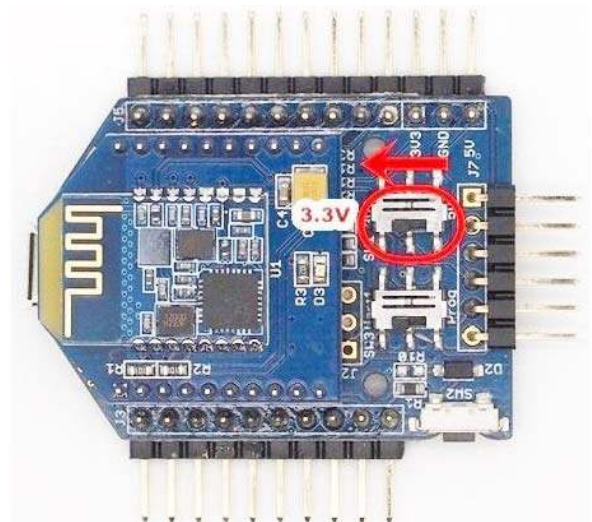
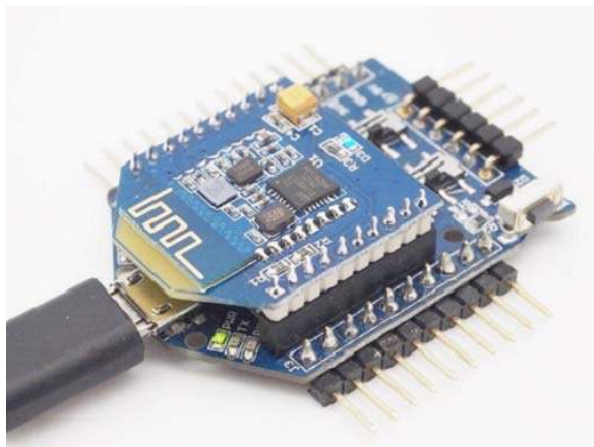
The supply voltage of this module is 2.5V ~ 3.7V, higher than this may cause permanent damage to the device. BLE transmission speed is slower than SPP transmission, so we selected the lower one in the design, in accordance with the speed of a BLE dual-mode product planning.

## Hardware Installation

---

### Connecting Bluetooth to PC through Uart Bee

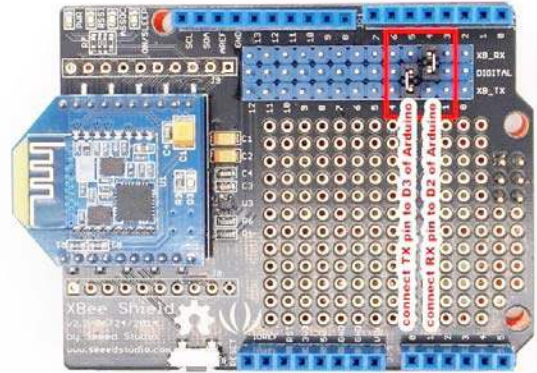
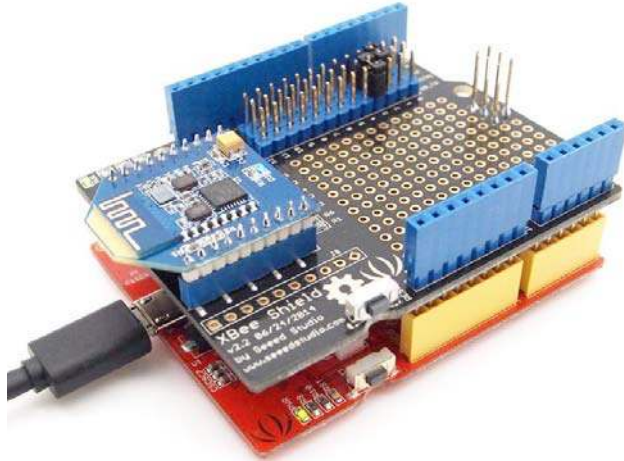
The Bluetooth provides a standard XBee socket. In here we use a UartSBee V5 to connect Bluetooth and PC, ensure the supply voltage was selected as 3.3V by slider.



### Connecting Bluetooth to Arduino

Here we use XBee Shield as a bridge between Bluetooth and Seeduino Lotus.

Since the hardware UART of Seeedino was used as debug with PC, We choose D2 and D3 to simulate software UART to communicate with Bluetooth. please refer to the jumper setting on below picture



## Software Instruction

### Conventions

- In EDR mode, only slave can be configured while either master or slave can be in BLE mode.
- Factory default setting:
  - \* EDR Name HMSoft, Slave role, PinCode 1234
    - BLE Name HMSoft, Slave role, PinCode 000000
    - Baud: 115200, N, 8, 1;
- AT Command format:
  - \* Uppercase AT command format. string format, without any other symbol. (e.g. \r or \n).
  - Any incorrect command would be no response.

### AT Commands

#### 1. Test Command

Send	Receive	Parameter
AT	OK/ER/Disconnect link	None

If module is not connected to remote device will receive: "OK"

If module has an error, will receive: "ER"

If Module has connected, module will disconnected from remote device, if "AT + NOTI" is setup to 1, will receive information string

## 2. Query module EDR address

Send	Receive	Parameter
AT+ADDE?	OK+ Get: MAC	None

## 3. Query module BLE address

Send	Receive	Parameter
AT+ADDB?	OK+ Get: MAC	None

## 4. Query/Set Authentication mode

Send	Receive	Parameter
Q: AT+AUTH?	OK+ Get:[P1]	P1: 0, 1, (Default: 0) 0 – Not authentication 1 – Must authentication
S: AT+AUTH[P1]	OK+ Set:[P1]	

AT+AUTH0: allow made an insecure connection.

AT+AUTH1: every connection must with authentication.

## 5. Query/Set A to B mode

Send	Receive	Parameter
Q: AT+ATOB?	OK+ Get:[P1]	P1: 0, 1, (Default: 0) 0 – Not Open ATOB 1 – Open ATOB mode
S: AT+ATOB[P1]	OK+ Set:[P1]	

This command must work with AT+MODE0 command. When A device (SPP mode) connect to the module and B device (BLE mode) is also connect to the module, The data string from A device send to the module will send to B device. The data string from B device send to the module is also send to the A device.

## 6. Query/Set baud rate

Send	Receive	Parameter
Q: AT+BAUD?	OK+ Get:[P1]	P1: 1~7, (Default: 6). 1 - 4800 2 – 9600 3 – 19200 4 – 38400 5 – 57600 6 – 115200 7 - 230400
S: AT+BAUD[P1]	OK+ Set:[P1]	

## 7. Clear bond information

Send	Receive	Parameter
AT+BONDE	OK+BONDE	Clear EDR bond info
AT+BONDB	OK+BONDB	Clear BLE bond info

BLE mode not supports it yet.

## 8. Clear Last Connected EDR Device Address

Send	Receive	Parameter
AT+CLEAE	OK+CLEAE	None

## 9. Clear Last Connected BLE Device Address

Send	Receive	Parameter
AT+CLEAB	OK+CLEAB	None

## 10. Query/Set Module DUAL Work Mode

Send	Receive	Parameter
Q: AT+DUAL?	OK+ Get:[P1]	P1: 0, 1, (Default: 0) 0 – Allow dual connect. 1 – Allow one connect.
S: AT+DUAL[P1]	OK+ Set:[P1]	

AT+DUAL0: allow two connections at same time (SPP and BLE).

AT+DUAL1: Only allow one connection at same time (SPP or BLE)

## 11. Query/Set hardware flow control switch

Send	Receive	Parameter
AT+FIOW?	OK+ Get:[P1]	P1: 0, 1,(Default: 0) 0: Hardware flow control off 1: Hardware flow control on
AT+FIOW[P1]	OK+ Set:[P1]	

## 12. Query/Set module data transmission speed mode

Send	Receive	Parameter
AT+HIGH?	OK+ Get:[P1]	P1: 0, 1,(Default: 0) 0: Balance mode 1: High speed mode
AT+HIGH[P1]	OK+ Set:[P1]	

In balance mode, we balanced SPP and BLE with a steady speed.

In high speed mode, we don't control speed, so SPP mode will get high speed.

In high speed mode, module lost RESETB pin function, but you still could use

“AT+RESET” command to reset module.

## 13. System Help Information

Send	Receive	Parameter
AT+HELP?	Help Information	None

## 14. Query/Set module loaded notify

Send	Receive	Parameter
AT+INIT?	OK+ Get:[P1]	P1: 0, 1,?, (Default: 0) 0: Loaded notify Off 1: Loaded notify on
AT+INIT[P1]	OK+ Set:[P1]	

When “AT+INIT1” is setup, after module loaded, module will output “OK+INIT” string through UART.

## 15. Query/Set Module Work Mode

Send	Receive	Parameter
Q: AT+MODE?	OK+ Get:[P1]	P1: 0, 1, (Default: 0) 0 – Data transmission. 1 – Remote control.
S: AT+MODE[P1]	OK+ Set:[ P1]	

AT+MODE0: Only transfer data when connection establishment.

AT+MODE1: Transfer data and response AT commands.

## 16. Query/Set Notify information

Send	Receive	Parameter
Q: AT+NOTI?	OK+ Get:[P1]	P1: 0, 1, (Default: 0) 0: Don't Notify 1: Notify
S: AT+NOTI[P1]	OK+ Set:[ P1]	

After AT+NOTI1, module will send connect or disconnect string through

UART when module state is change:

OK+CONE ===== EDR connect

OK+LSTE ===== EDR disconnect

OK+CONB===== BLE connect

OK+LSTB ===== BLE disconnect

OK+LSTA ===== except disconnect, module will reset after 500 ms.

## 17. Query/Set notify mode

Send	Receive	Parameter
Q: AT+NOTP?	OK+ Get:[P1]	P1: 0, 1; default: 0 0: without address 1: with address
Q: AT+NOTP[P1]	OK+ Set:[ P1]	



This command must work with “AT+NOTI1”, if this switch is open, when the module connect to disconnect, the prompt string will include the remote address.

### 18. Query/Set Module EDR name

Send	Receive	Parameter
Q: AT+NAME?	OK+ Get:[P1]	P1: module EDR name, Max length is 12. Default: HMSoft
Q: AT+NAME[P1]	OK+ Set:[ P1]	

### 19. Query/Set Module BLE name

Send	Receive	Parameter
Q: AT+NAMB?	OK+ Get:[P1]	P1: module BLE name, Max length is 12. Default: HMSoft
S: AT+NAMB[P1]	OK+ Set:[ P1]	

### 20. Query/Set PIO1 output status (System LED)e

Send	Receive	Parameter
Q: AT+PIO1?	OK+ Get:[P1]	P1: 0, 1 0: Unconnected Output 500ms High 500ms Low, Connected output
S: AT+ PIO1 [P1]	OK+ Set:[ P1]	High. 1: Unconnected output Low, Connected output High. Default: 0

### 21. Query/Set PIO output status

Send	Receive	Parameter
Q: AT+PIO[P1]?	OK+ Get:[P1][P2]	P1: 2~B (HM-12) P2: 2~3 (HM-13) 0: Output Low 1: Output High ? : Query
S: AT+ PIO[P1][P2]	OK+ Set:[P1][P2]	

## 22. Query/Set EDR Pin Code

Send	Receive	Parameter
Q: AT+PINE?	OK+ Get:[P1]	P1: module EDR Code Max length: 6 Default: 1234
S: AT+PINE[P1]	OK+ Set:[P1]	

## 23. Query/Set BLE Pin Code

Send	Receive	Parameter
Q: AT+PINB?	OK+ Get:[P1]	P1: module BLE Code 000000~999999 Default: 000000
S: AT+PINB[P1]	OK+ Set:[P1]	

## 24. Query/Set UART parity bit

Send	Receive	Parameter
Q: AT+PARI?	OK+ Get:[P1]	P1: 0, 1, 2, (Default: 0) 0: Parity None 1: Parity even 2: Parity odd
S: AT+PARI[P1]	OK+ Set:[P1]	

## 25. Restore all setup value to factory setup

Send	Receive	Parameter
AT+RENEW	OK+RENEW	None

## 26. Restart module

Send	Receive	Parameter
AT+RESET	OK+RESET	None

## 27. Query BLE RSSI value

Send	Receive	Parameter
AT+RSSB?	OK+RSSB: [P1]	P1: RSSI value 9999: No connection 9998: Try later 9997: Read error Xxxx: RSSI value

This command must use after “AT+MODE1” is setup. This command is only used by remote Bluetooth device. **28. Query EDR RSSI value**

Send	Receive	Parameter
AT+RSSE?	OK+RSSE: [P1]	P1: RSSI value 9999: No connection 9998: Try later 9997: Read error Xxxx: RSSI value

## 29. Query Last Connected EDR Device Address

Send	Receive	Parameter
AT+RADE?	OK+Get:MAC Address	None

## 30. Query Last Connected BLE Device Address

Send	Receive	Parameter
AT+RADB?	OK+Get:MAC Address	None

## 31. Query/Set Master and Slaver Role

Send	Receive	Parameter
AT+ROLB?	OK+ Get:[P1]	P1: 0, 1 (default: 0) 0: Peripheral 1: Central
AT+ROLB[P1]	OK+ Set:[P1]	

This command will take effect after module next power on or reset. **32. Query/Set EDR work mode**

Send	Receive	Parameter
Q: AT+SCAN?	OK+ Get:[P1]	P1: 0, 1, (Default: 0) 0: Discovery and connectable 1: Only connectable
S: AT+SCAN[P1]	OK+ Set:[P1]	

### 33. Query/Set UART stop bit

Send	Receive	Parameter
Q: AT+STOP?	OK+ Get:[P1]	P1: 0, 1, (Default: 0) 0: 1 stop bit 1: 2 stop bits
S: AT+STOP[P1]	OK+ Set:[P1]	

### 34. Query Software Version

Send	Receive	Parameter
AT+VERR? AT+VERS?	Version Information	None

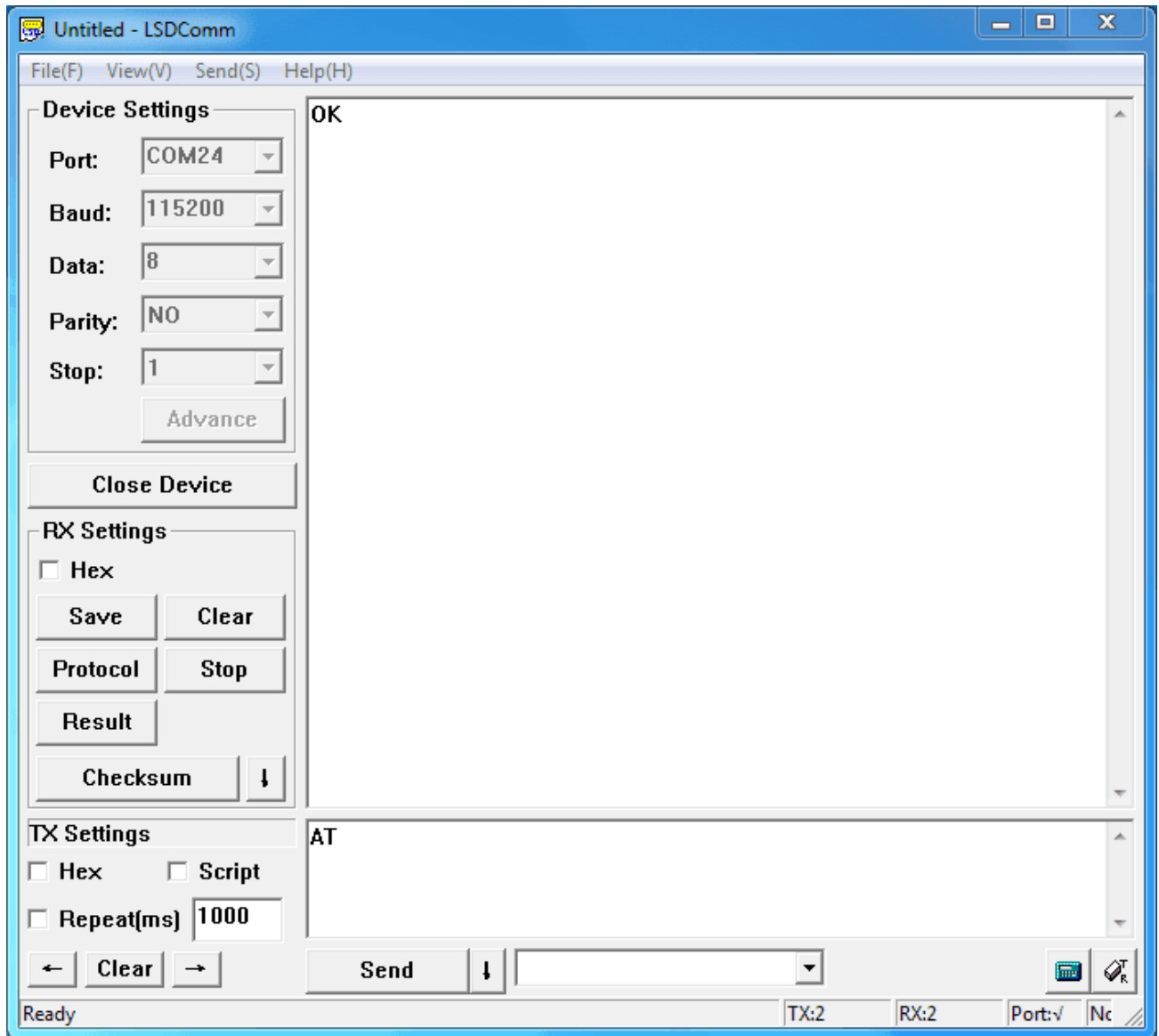
## Programming

---

### Configure the Bluetooth module with Serial under Windows

This section shows how to configure Bluetooth with PC, some basic methods of setting could be learn. Set up hardware connection refer to “Hardware Installation” section. You will find the blue LED on the module flashes illustrate no connection is set up.

Open a serial terminal and set Baud Rate:115200, Databits: 8, Stopbits: 1 and No Flow Control. Send “AT” to Bluetooth with the serial terminal and “OK” will be return if all goes well. The Bluetooth only respond AT commands when no connection was set up, or all commands were seen as string and sent out. You can distinguish the status through LED indicates.



Then some useful configurations could be sent. Here's are some samples of commands and response.

1. Test serial connection, send "AT", will return "OK".
2. Restore factory settings, send "AT+RENEW", return "OK+RENEW".
3. Reset baud rate of serial port, send "AT+BAUD2", return "OK+Set:2".
4. Enable authentication, send "AT+AUTH1", return "OK+Set:1".
5. Reset the Bluetooth, send "AT+RESET", return "OK+RESET".
6. Query firmware version, send "AT+VERS?", return "OK+Get:HMSOftV217".
7. Query MAC of EDR, send "AT+ADDE?", return "OK+Get:000E0E002074".
8. Query MAC of BLE, send "AT+ADDB?", return "OK+Get:000E0B002074".

9. Set the name of EDR, send "AT+NAMEHM-13-EDR", return "OK+Set:HM-13-EDR".
10. Set the name of BLE, send "AT+NAMEHM-13-BLE", return "OK+Set:HM-13-BLE".
11. Set the password of EDR, send "AT+PINE123451", return "OK+Set:123451".
12. Set the password of BLE, send "AT+PINB123451", return "OK+Set:123451".
13. Enable discovery and connectable, send "AT+SCAN0", return "OK+Set:0".
14. Enable notify information of connection, send "AT+NOTI1", return "OK+Set:1".
15. Notify information include address, send "AT+NOTP1", return "OK+Set:1".
16. Enable user key, send "AT+PIO01", return "OK+Set:1".
17. Set to Central mode, send "AT+ROLB1", return "AT+ROLB1".

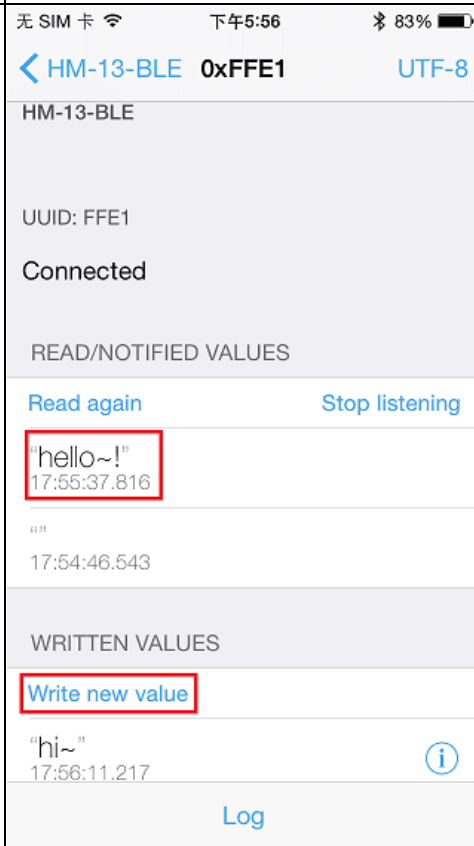
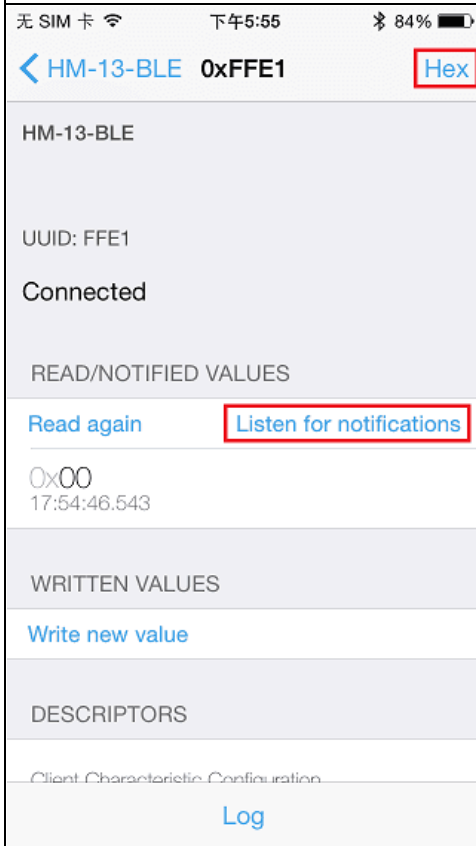
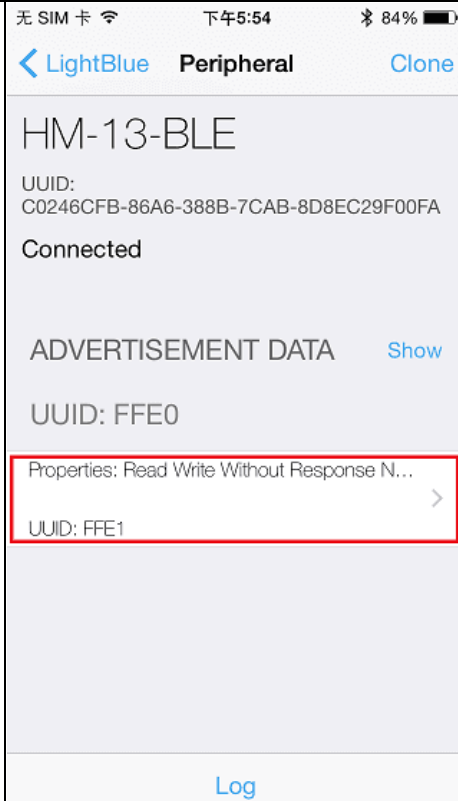
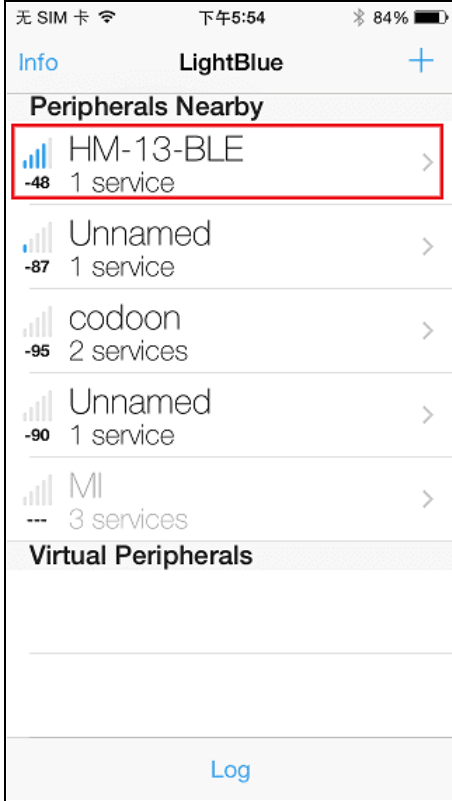
Or Set to Peripheral mode, send "AT+ROLB0", return "AT+ROLB0".

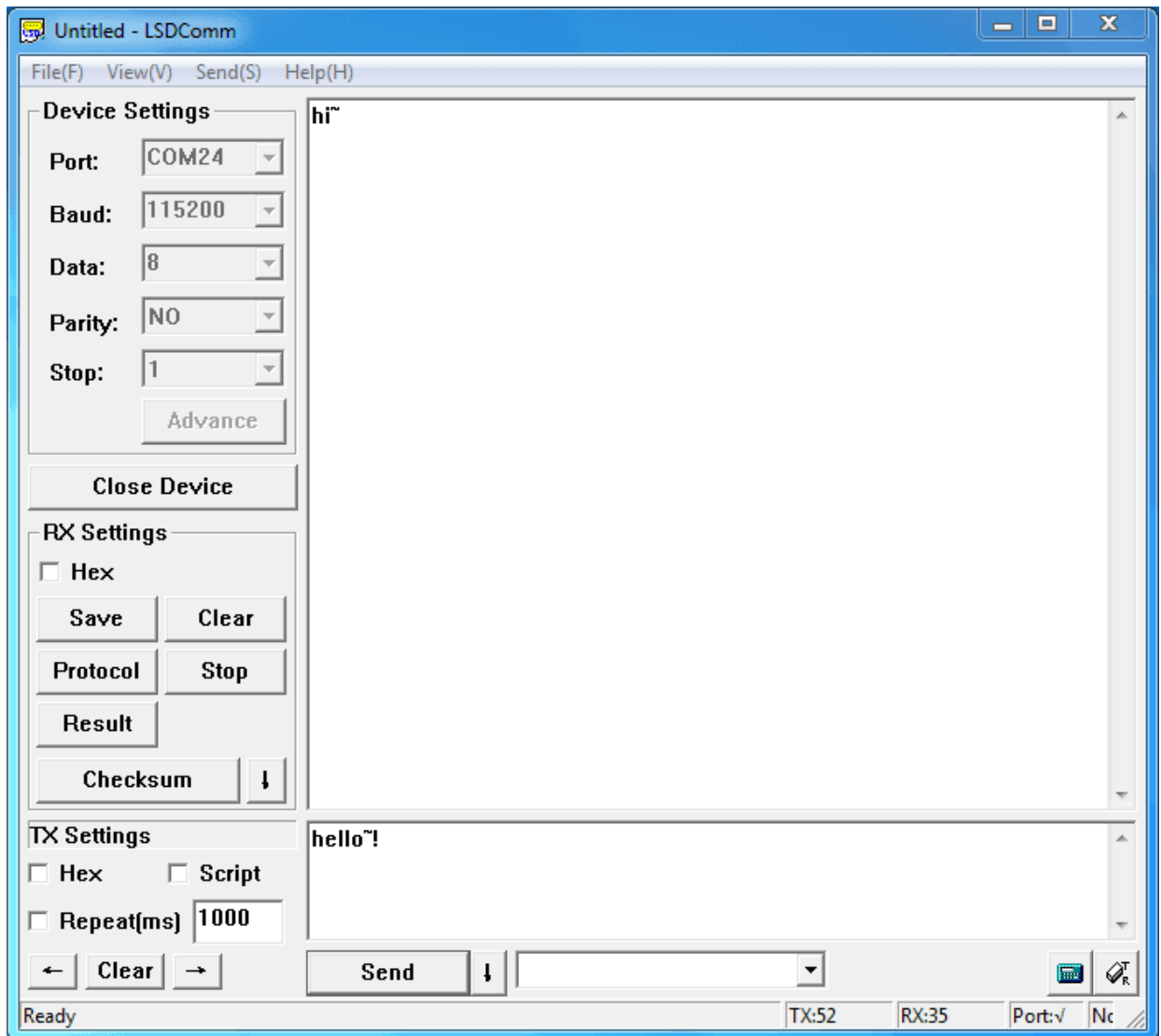
We use two Bluetooth connected with PC, one was set as Central while the other is Peripheral. Several seconds later they find each other and the LED stop flash, connected!

### **Communicate with iPhone**

This kind of Bluetooth module has two protocol: Bluetooth EDR(Enhanced Data Rate) and Bluetooth Low Energy. It can communicate with any device has one of these protocols. Some Android phone with OS higher than 4.3 and iPhone4 or later have BLE ability. We use a iPhone to demonstrate how to use a cellphone to interact with Bluetooth.

Power the Bluetooth and configure it as Peripheral role. Search LightBlue in Apple Store and install it. Launch the app, you may find "HM-13-BLE" which we just renamed. Touch it to connect, then touch "Properties" to control it. The key "Hex" on the top right is for change data format, maybe String is easy to see. Hit "Listen for notifications" to enable data receiving. Then we can send data to PC through BLE, hit "Write new value" and write some words. Also PC can transfer data to iPhone with serial terminal.





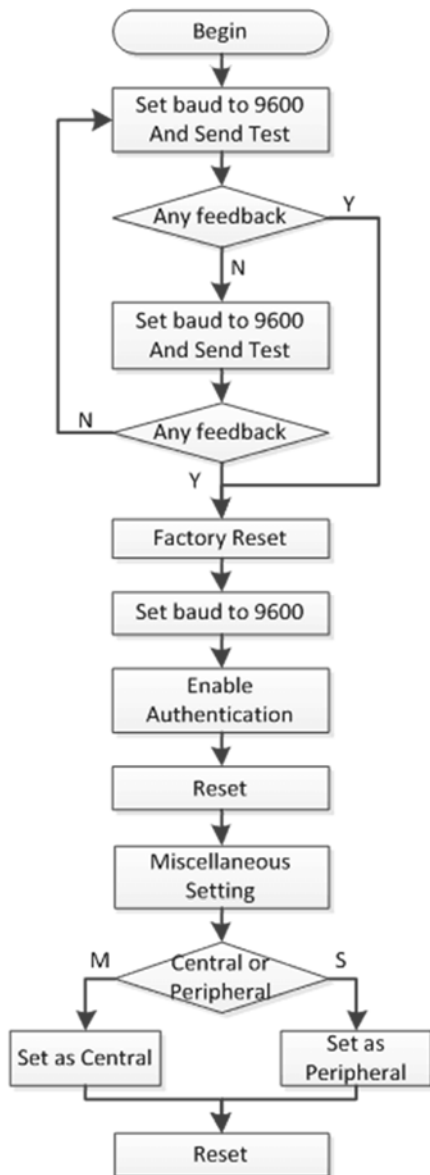
## Data transmission between Two Arduinos

Are you ready to code? It's time to do something after practice. Prepare a pair of Bluetooth, and Arduino or other platform to control them. Here we use two Arduino Uno. Set up the connection as mentioned in section "Hardware Installation".

The program of Central and Peripheral use the same code, the only difference is the micro define at the beginning of the program. To assign the Bluetooth to Central role, Just need to modify the text to "#define MASTER 1", or "#define MASTER 1" if Peripheral role was assigned.

The initialization program flow please refer to the following flow chart. First of all we need to distinguish the presetting baud rate of the Bluetooth. After this, send commands to restore factory settings, and change baud rate from 115200 to 9600 since software serial will not working well at high baud rate. Then other parameters were configured to the Bluetooth with Reset command in the final.

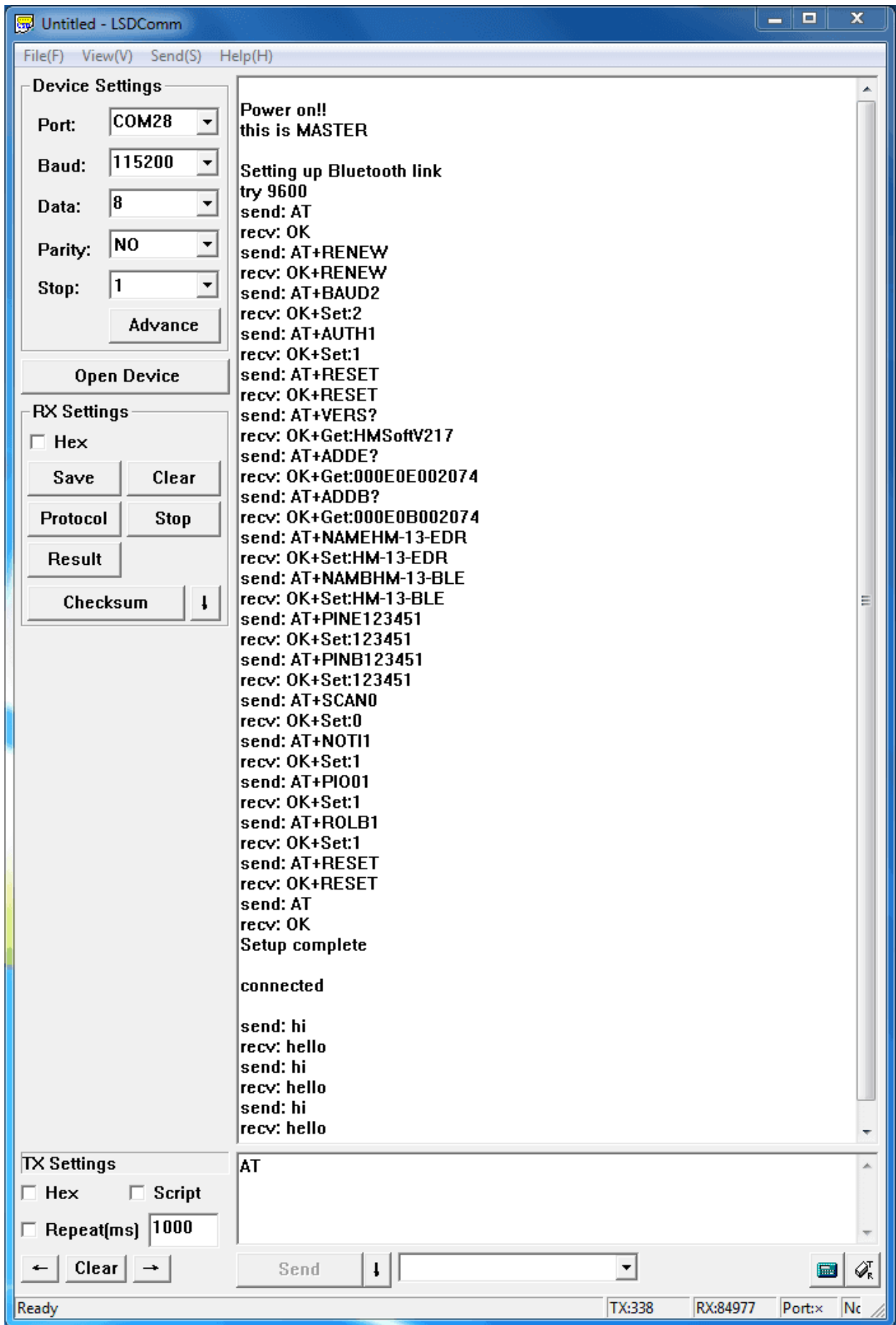




After the initialization, the Central and Peripheral will do different things, the Central will send message to Peripheral interval and print what received from Peripheral while the Peripheral only responds the Central.

Click [here](#) to download the test code and open HM-13\_SW.ino with Arduino IDE, compile and download to Arduino Uno. Remember to configure the Bluetooth to different role by modify the macro at the beginning. If you have any problem about how to start Arduino, please click [here](#) for some help.

After downloading program, open two serial terminal windows, the LEDs on Bluetooth will flash, several seconds later, they stop to flash and keep on, this indicates that they connected to each other. According to the program is written, the Central sends message to the Peripheral continually and get feedback every time.



Untitled - LSDComm

File(F) View(V) Send(S) Help(H)

**Device Settings**

Port: COM26  
Baud: 115200  
Data: 8  
Parity: NO  
Stop: 1  
Advance

Open Device

**RX Settings**

Hex  
Save Clear  
Protocol Stop  
Result  
Checksum ↓

**TX Settings**

Hex  Script  
 Repeat(ms) 1000  
← Clear →

Send ↓

Power on!!  
this is SLAVE

Setting up Bluetooth link  
try 9600  
send: AT  
rcv: OK  
send: AT+RENEW  
rcv: OK+RENEW  
send: AT+BAUD2  
rcv: OK+Set:2  
send: AT+AUTH1  
rcv: OK+Set:1  
send: AT+RESET  
rcv: OK+RESET  
send: AT+VERS?  
rcv: OK+Get:HMSOftV217  
send: AT+ADDE?  
rcv: OK+Get:000E0E002069  
send: AT+ADDB?  
rcv: OK+Get:000E0B002069  
send: AT+NAMEHM-13-EDR  
rcv: OK+Set:HM-13-EDR  
send: AT+NAMBHM-13-BLE  
rcv: OK+Set:HM-13-BLE  
send: AT+PINE123451  
rcv: OK+Set:123451  
send: AT+PINB123451  
rcv: OK+Set:123451  
send: AT+SCAN0  
rcv: OK+Set:0  
send: AT+NOTI1  
rcv: OK+Set:1  
send: AT+PIO1  
rcv: OK+Set:1  
send: AT+ROLB0  
rcv: OK+Set:0  
send: AT+RESET  
rcv: OK+RESET  
send: AT  
rcv: OK  
Setup complete

connected

rcv: hi  
send: hello  
rcv: hi  
send: hello  
rcv: hi  
send: hello

Ready TX: RX:17112 Port:x Nc

## Resources

---

- HM-13 Bluetooth Datasheet
- Arduino code
- Eagle\_BLE(dual)\_Bee\_V1.0\_sch\_pcb
- PDF\_BLE(dual)\_bee\_v1.0

## Tech Support

Please submit any technical issue into our forum.