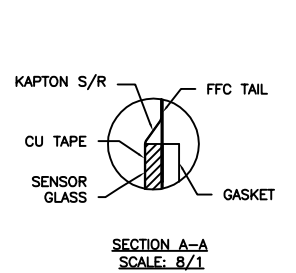
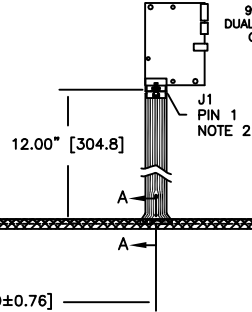
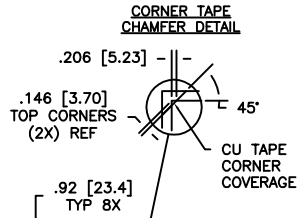


OGA DIAG: 56.27 [1429.3]
 AA DIAG: 55.16 [1401.2]

KIT 98 SKU NUMBER	TYPE	PRODUCT SPEC
98-0003-3625-9	DX123	33626/34017

(DX123)

98-0003-3627-5
 DUAL MODE CONTROLLER
 COMPONENT SIDE



J1 PINOUT	
1	CH 3
2	CH 2
3	PWR
4	2.5V
5	GRD
6	PWR
7	CH 0
8	CH 1

SENSOR FRONT

CU TAPE
 3 SIDES

25.77 [654.6] 2X
 GASKET
 NOTE 3

20.000±0.030 [508.00±0.76]

.41 [10.32]

27.158 [689.80]
 AA

27.970 [710.44]
 OGA

.083 [2.11]
 GLASS REF.
 .170 [4.32]
 TOTAL THK.

46.63 [1184.4] GASKET 2X
 NOTE 3

1.10 [27.9]
 REF

48.016 [1219.59] AA

.41 [10.32]

48.828 [1240.23] OGA



NOTES:

- WEIGHT OF GLASS IN GRAMS: 4643 ±10%
- 8 PIN AMP CONNECTOR
 LATCH STYLE HOUSING P/N: 487526-7
 TIN CONTACTS P/N: 2-487406-4
 HOUSING ORIENTED WITH LATCH UP
- GASKET ON SENSOR BACKSIDE

INCHES [MM]	
.X	±.03
.XX	±.03
.XXX	±.015
ANGLES	±1°

DATE	MTD	8/19/10	SCALE	1 = 1
APP'D				

B	REVISE PER CO 032628	3/11	MTD	
01	RELEASE PER CO 031908	8/10	MTD	
MKT DWG DST2270DX 55.16"				
DATE	MTD	8/19/10	SCALE	1 OF 1
APP'D				
38043-MKT				