

98 CKT
SINGLE BAY EXAMPLE

172066-***

NUMBER OF CIRCUITS
PLATING:
0 = 0.38 MICROMETERS (15 MICRONS) GOLD
9 = 0.76 MICROMETERS (30 MICRONS) GOLD

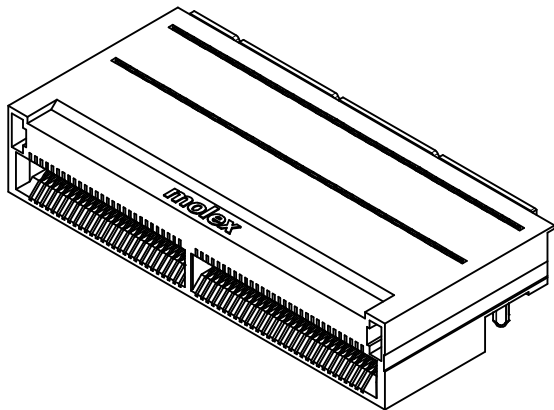
- 1 = 3 GROUND CLIPS / GROUND WAFERS NOT SINGULATED
- 2 = 3 GROUND CLIPS / GROUND WAFERS SINGULATED
- 3 = 2 CLIPS ON TOP / GROUND WAFERS NOT SINGULATED
- 5 = 2 CLIPS ON TOP / GROUND WAFERS SINGULATED
- 6 = NO GROUND CLIPS / GROUND WAFERS NOT SINGULATED
- 7 = NO GROUND CLIPS / GROUND WAFERS SINGULATED

NOTES:

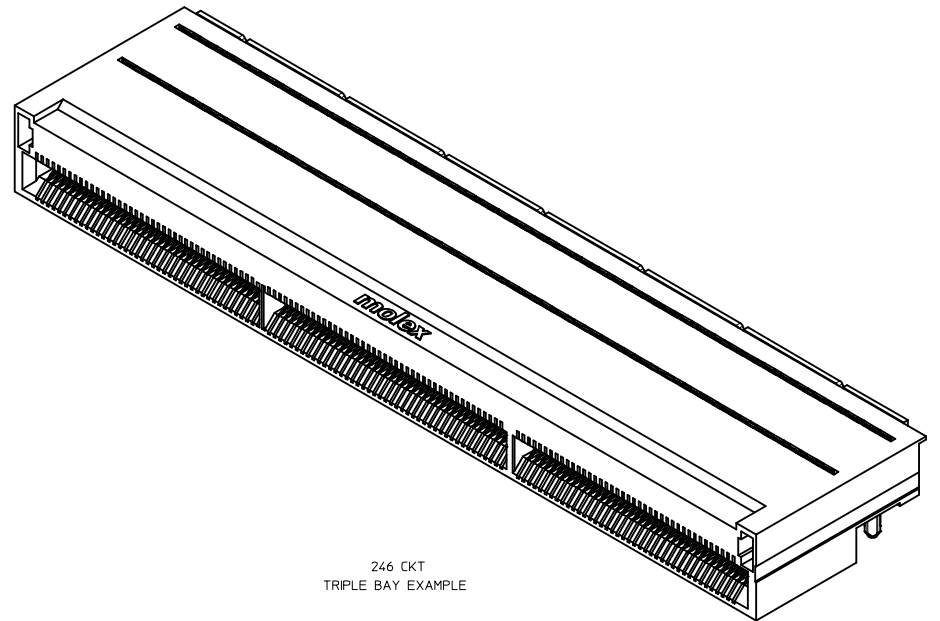
1. MATERIAL -
CONNECTOR HOUSING: GLASS FILLED LCP, 94V-0, BLACK
OVERMOLDING ON TERMINALS: GLASS FILLED LCP, 94V-0, BLACK
TERMINALS: COPPPER ALLOY, SPRING TEMPER
GROUNDING BAR: COPPER ALLOY
STIFFENER: 400 SERIES STAINLESS
2. TERMINAL FINISH (LEAD-FREE)
CONTACT AREA: 0.384mm OR 0.764mm HARD GOLD OVER 3.84mm MIN NICKEL,
COMPLIANT PIN AREA: .075-1.504mm MATTE TIN OVER 1.254mm MIN. NICKEL.
3. REFER TO PRODUCT SPEC, PS-170305-0001 FOR ALL ELECTRICAL, MECHANICAL AND ENVIROMENTAL SPECIFICATIONS.
4. REFER TO PK-170305-0001 FOR ALL PACKAGING SPECIFICATIONS.
5. REFER TO AS-170305-0001 FOR ALL APPLICATION INFORMATION.
6. REFER TO AS-170305-0002 FOR ROUTING GUIDE RECOMMENDATIONS.
7. DATE CODE AND ASSEMBLY PART NUMBER TO BE LASER ETCHED OR ON LABEL LOCATED ON THE BOTTOM OF THE PART. DATE CODE TO BE IN THE FORMAT OF, DAY OF THE YEAR AND LAST DIGIT OF THE YEAR, (DDYY).

| PART NUMBER | CIRCUITS | TOOLED | BAY | DIM A | BAY ONE | BAY TWO | BAY THREE | DIM B | DIM C | DIM D | DIM E |
|-------------|----------|--------|--------|--------|-------------|-------------|-------------|--------|-------|-------|-------|
| 172066-**50 | 50 | NO | SINGLE | 25.69 | 50 CIRCUITS | N/A | N/A | 22.60 | 21.00 | N/A | N/A |
| 172066-**62 | 62 | NO | SINGLE | 30.49 | 62 CIRCUITS | N/A | N/A | 27.40 | 25.80 | N/A | N/A |
| 172066-**80 | 80 | NO | SINGLE | 37.69 | 80 CIRCUITS | N/A | N/A | 34.60 | 33.00 | N/A | N/A |
| 172066-**98 | 98 | YES | SINGLE | 44.89 | 98 CIRCUITS | N/A | N/A | 41.80 | 40.20 | N/A | N/A |
| 172066-**18 | 118 | NO | DOUBLE | 54.49 | 56 CIRCUITS | 62 CIRCUITS | N/A | 51.40 | 23.70 | 26.10 | N/A |
| 172066-**54 | 154 | NO | DOUBLE | 68.89 | 74 CIRCUITS | 80 CIRCUITS | N/A | 65.80 | 30.90 | 33.30 | N/A |
| 172066-**74 | 174 | NO | TRIPLE | 78.49 | 56 CIRCUITS | 62 CIRCUITS | 56 CIRCUITS | 75.40 | 26.40 | 23.70 | 50.10 |
| 172066-**16 | 216 | NO | TRIPLE | 95.29 | 70 CIRCUITS | 76 CIRCUITS | 70 CIRCUITS | 92.20 | 32.00 | 29.30 | 61.30 |
| 172066-**46 | 246 | NO | TRIPLE | 107.29 | 80 CIRCUITS | 86 CIRCUITS | 80 CIRCUITS | 104.20 | 36.00 | 33.30 | 69.30 |

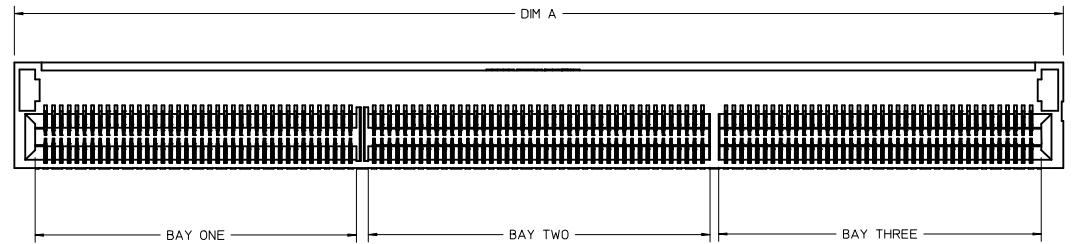
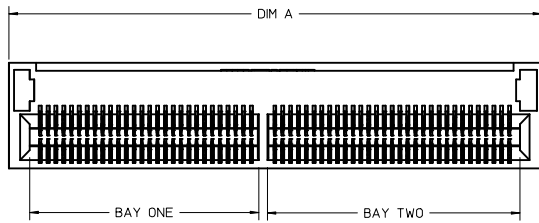
| | | | | | | | |
|--|-----------------|---|---|--------------|-----------------------------|------------------------|------------------|
| REV. PCB 0 G. 10 SHT 4 EC NO: UCP2015-3035 D: DRWNSVANG01 2015/01/28 CHYKMWOLFEE 2015/01/28 APPROXSMILLER 2015/02/02 DESCRIPTION | QUALITY SYMBOLS | GENERAL TOLERANCES (UNLESS SPECIFIED) | DIMENSION STYLE | SCALE | DESIGN UNITS | THIRD ANGLE PROJECTION | |
| | ▽=0 | mm INCH | MM ONLY | 4:1 | METRIC | ☉ | |
| | ▽=0 | 4 PLACES ±---+--- 3 PLACES ±---+--- 2 PLACES ±0.13+--- 1 PLACE ±0.25+--- 0 PLACE ±---+--- | DRAWN BY DATE MWOLFE 2014/08/01 CHECKED BY DATE MPOFF 2014/08/01 APPROVED BY DATE SMILLER 2014/08/15 | TITLE | .062 COPLANAR SALES DRAWING | | |
| | ▽=0 | ANGULAR ±1/2° DRAFT WHERE APPLICABLE MUST REMAIN WITHIN DIMENSIONS | MATERIAL NO. DATE SEE TABLE | DOCUMENT NO. | SD-172066-001 | | SHEET NO. 1 OF 6 |



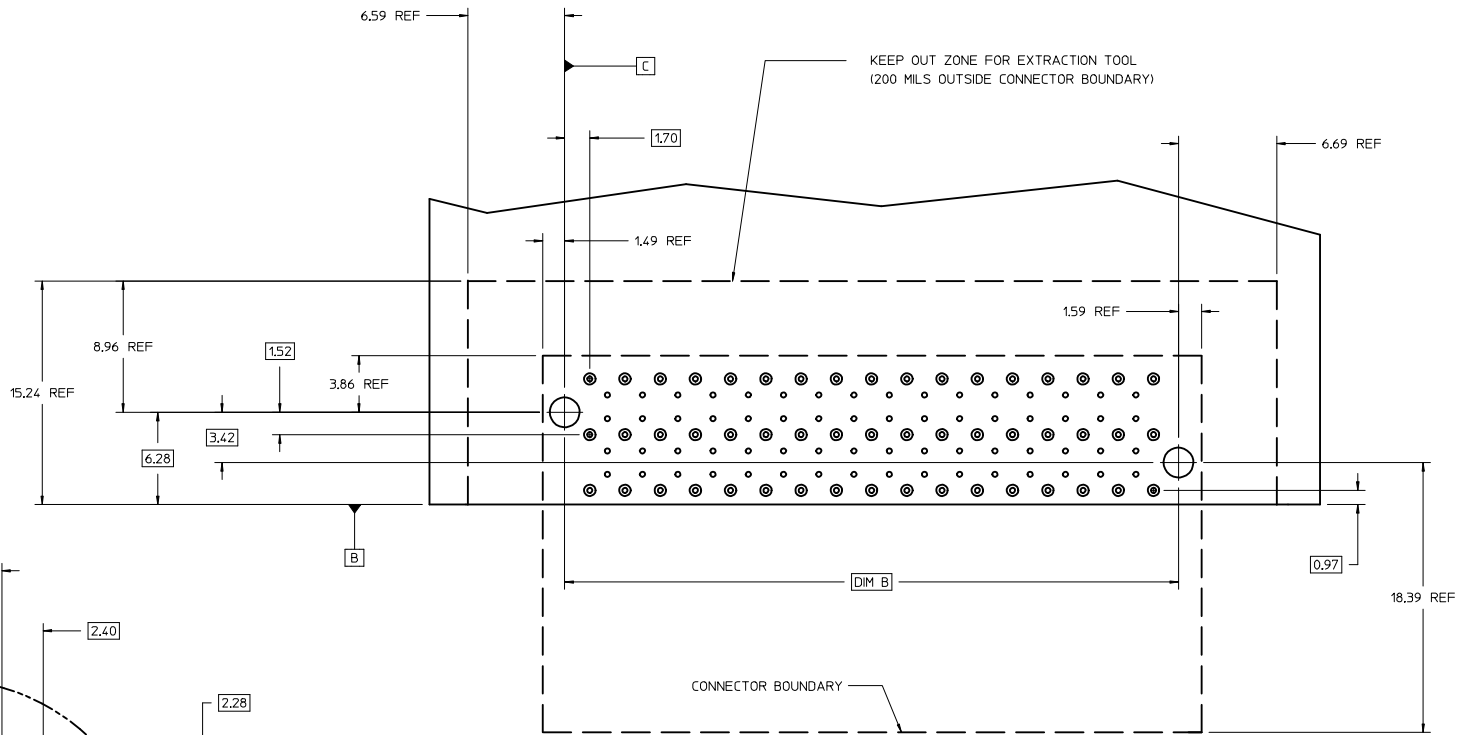
118 CKT
DOUBLE BAY EXAMPLE



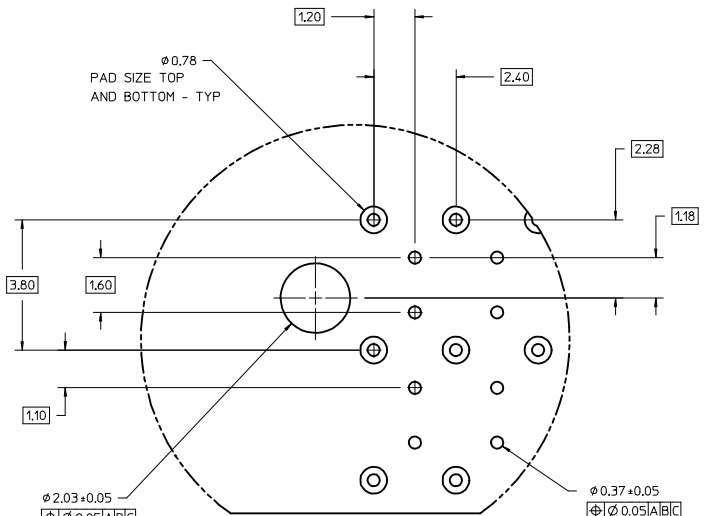
246 CKT
TRIPLE BAY EXAMPLE



| | | | | | | |
|--|-----------------|--|-----------------|------------|---|------------------------|
| SEE SHEET 1 IEC NO: UCP2015-3035 DRAWN BY: DRWNSVANG01 2015/01/28 CHECKED BY: CHYKMWOLFE 2015/01/28 APPROVED BY: APPR:SMILLER 2015/02/02 | QUALITY SYMBOLS | GENERAL TOLERANCES (UNLESS SPECIFIED) | DIMENSION STYLE | SCALE | DESIGN UNITS | THIRD ANGLE PROJECTION |
| | ▽=0 | 4 PLACES ± mm ± INCH | MM ONLY | 4:1 | METRIC | |
| | ▽=0 | 3 PLACES ± 0.13 | | | | |
| | ▽=0 | 1 PLACE ± 0.25 | | | | |
| | ANGULAR ±1/2° | DRAFT WHERE APPLICABLE MUST REMAIN WITHIN DIMENSIONS | MATERIAL NO. | DATE | TITLE | |
| | | | SEE TABLE | 2014/08/01 | .062 COPLANAR SALES DRAWING | |
| | | | | 2014/08/01 | molex | |
| | | | | | DOCUMENT NO. | SHEET NO. |
| | | | | | SD-172066-001 | 2 OF 6 |
| | | | | | THIS DRAWING CONTAINS INFORMATION THAT IS PROPRIETARY TO MOLEX INCORPORATED AND SHOULD NOT BE USED WITHOUT WRITTEN PERMISSION | |

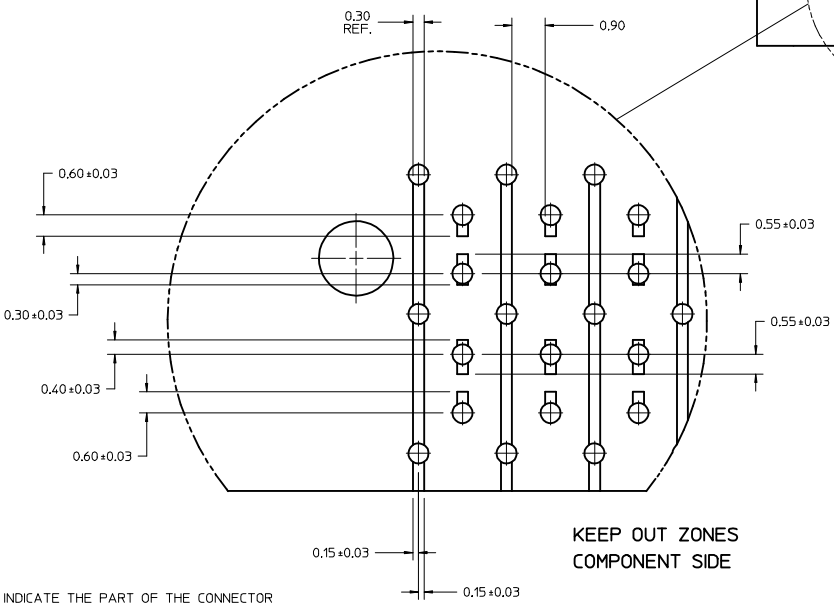
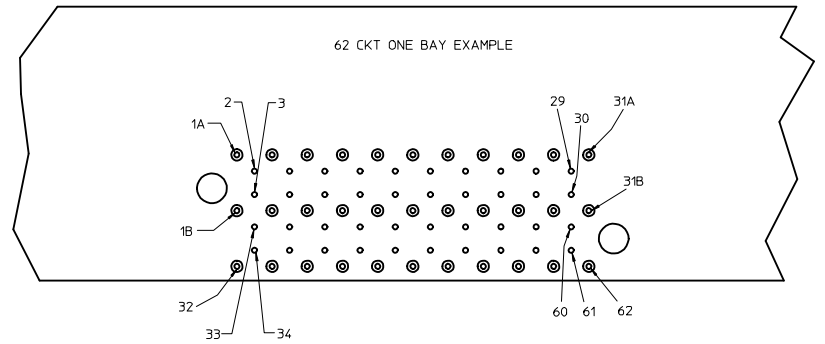
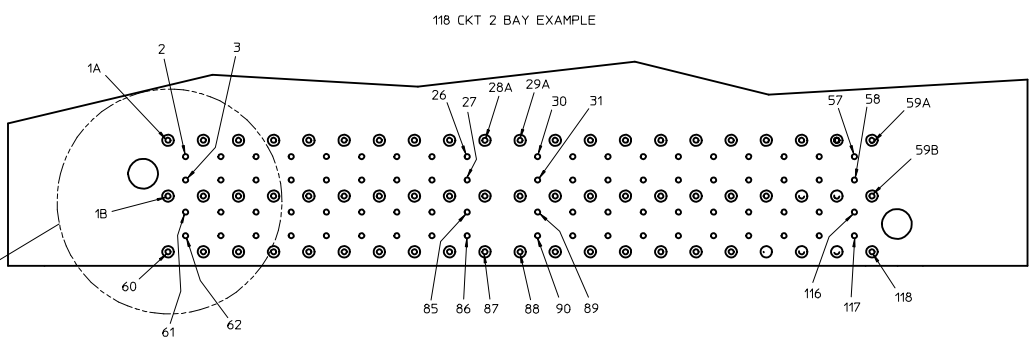
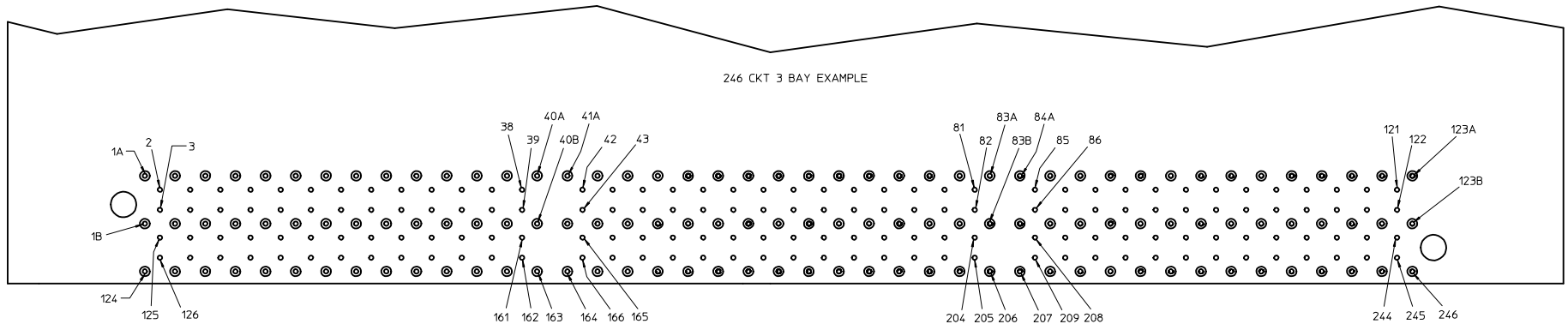


98 CKT
SINGLE BAY EXAMPLE



RECOMMENDED TAIL PATTERN
SEE AS-170305-0002 FOR
INTERNAL ANTI-PAD SPECIFICATION
DETAIL 1
SCALE 14:1

| | | | | | | |
|---|--|--|---|---|--------------|------------------------|
| SEE SHEET 1 EC NO: UCP2015-3035 DRAWNS/VANG01 2015/01/28 CHKD/MWLF 2015/01/28 APPR/S MILLER 2015/02/02 | QUALITY SYMBOLS | GENERAL TOLERANCES (UNLESS SPECIFIED) | DIMENSION STYLE | SCALE | DESIGN UNITS | THIRD ANGLE PROJECTION |
| | $\nabla=0$ $\nabla=0$ $\nabla=0$ | 4 PLACES ±--- ±--- 3 PLACES ±--- ±--- 2 PLACES ±0.13 ±--- 1 PLACE ±0.25 ±--- 0 PLACE ±--- ±--- | mm INCH ANGULAR ±1/2° DRAFT WHERE APPLICABLE MUST REMAIN WITHIN DIMENSIONS | MM ONLY DRAWN BY DATE MWLF 2014/08/01 CHECKED BY DATE MPOFF 2014/08/01 APPROVED BY DATE MILLER 2014/08/15 | 4:1 | METRIC |
| SIZE D THIS DRAWING CONTAINS INFORMATION THAT IS PROPRIETARY TO MOLEX INCORPORATED AND SHOULD NOT BE USED WITHOUT WRITTEN PERMISSION | | | SEE TABLE | | | SHEET NO. 3 OF 6 |



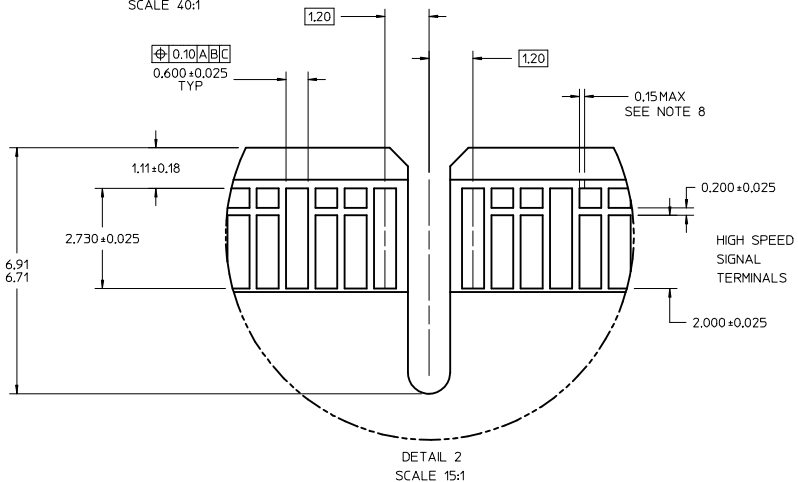
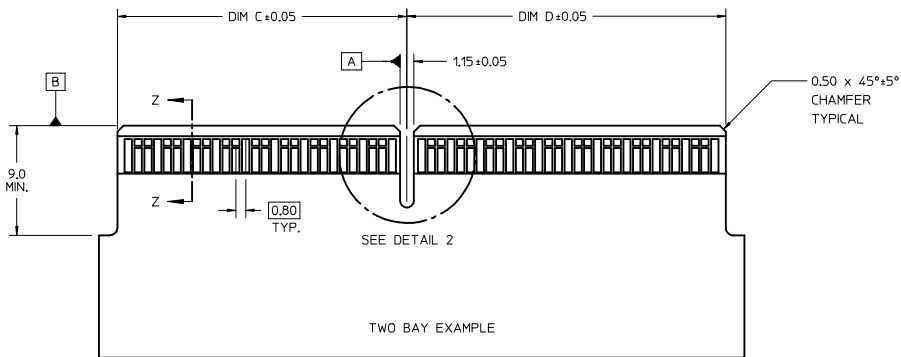
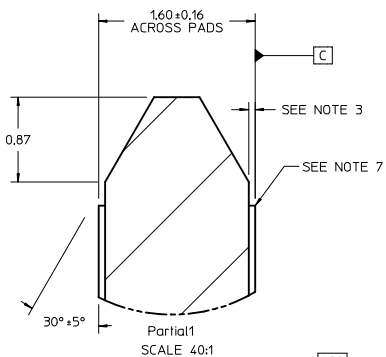
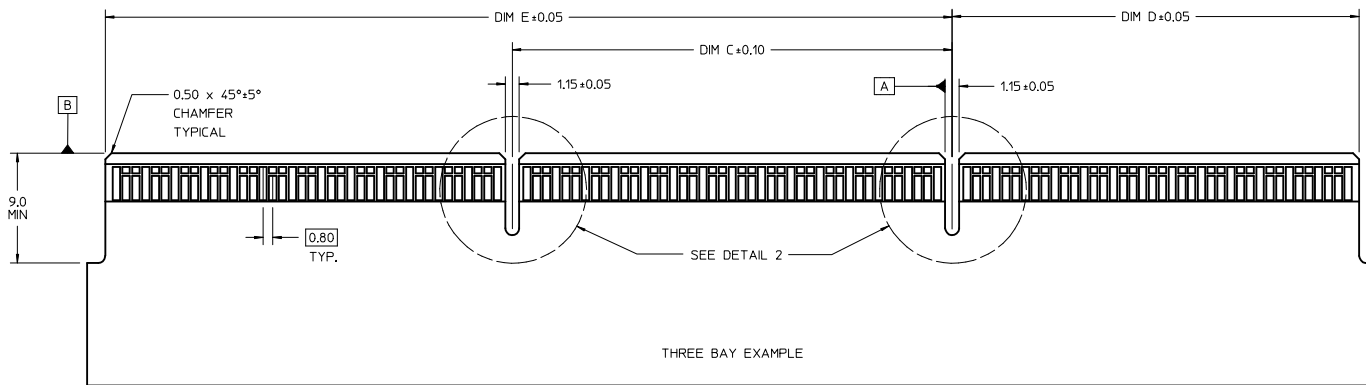
KEEP OUT ZONES
COMPONENT SIDE

NOTE:
1. KEEP-OUT ZONES INDICATE THE PART OF THE CONNECTOR THAT MAY COME IN CONTACT WITH THE PCB. IT IS RECOMMENDED TO ROUTE TRACES AWAY FROM THESE AREAS.

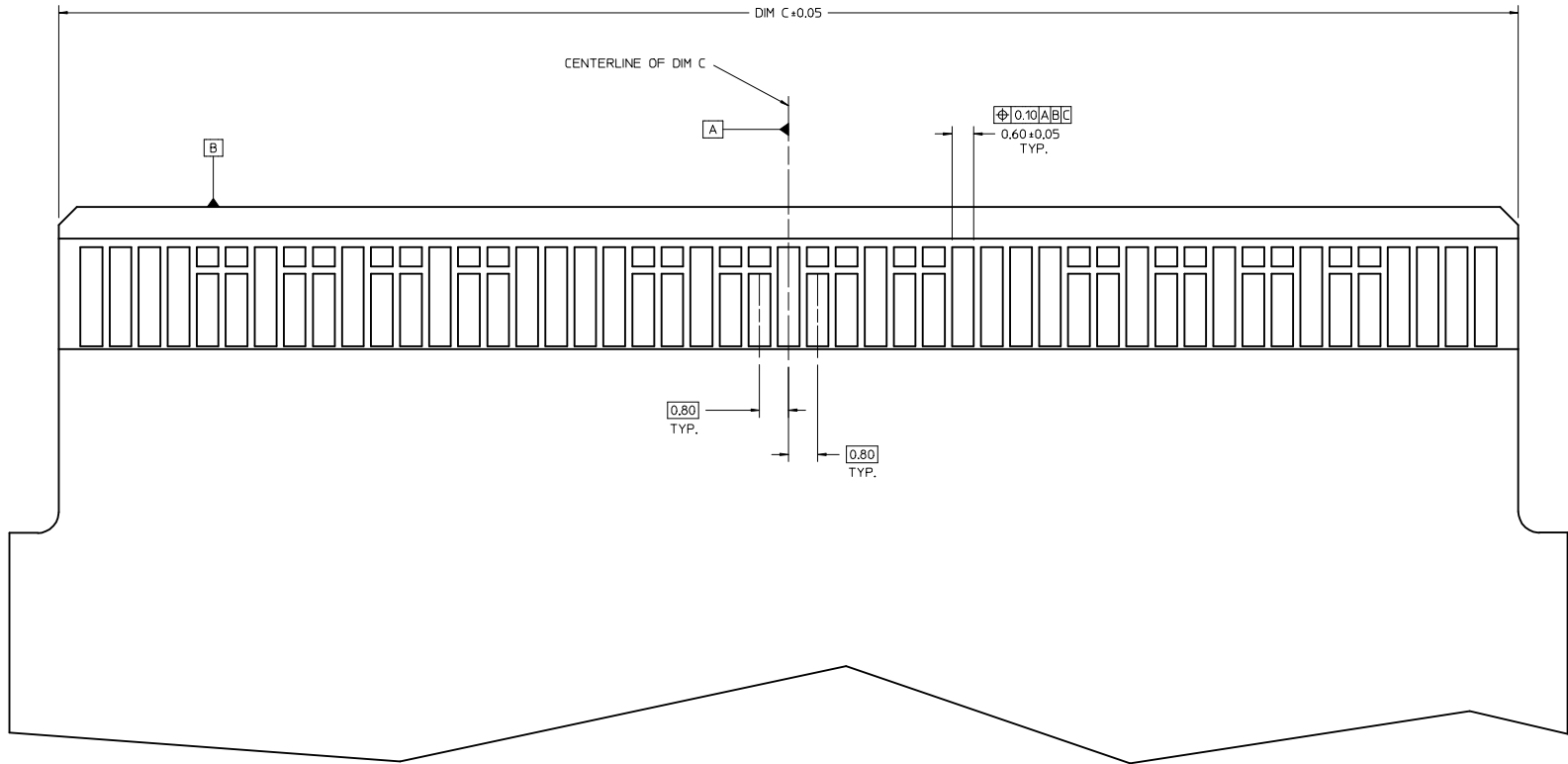
| | | | | | |
|--|---|--|--|---|----------------------------|
| SEE SHEET 1 IEC NO: UCP2015-3035 DRAWNS: WANG01 2015/01/28 CHKD: WOLFE 2015/01/28 APPR: SMILLER 2015/02/02 | QUALITY SYMBOLS ▽=0 ▽=0 ▽=0 | GENERAL TOLERANCES (UNLESS SPECIFIED) DIMENSION STYLE MM ONLY SCALE 6:1 DESIGN UNITS METRIC THIRD ANGLE PROJECTION | DRAWN BY WOLFE DATE 2014/08/01 CHECKED BY YPOFF DATE 2014/08/01 APPROVED BY SMILLER DATE 2014/08/15 | TITLE .062 COPLANAR SALES DRAWING MATERIAL NO. SEE TABLE DOCUMENT NO. SD-172066-001 | SHEET NO. 4 OF 6 |
| | ANGULAR ±1/2° DRAFT WHERE APPLICABLE MUST REMAIN WITHIN DIMENSIONS | THIS DRAWING CONTAINS INFORMATION THAT IS PROPRIETARY TO MOLEX INCORPORATED AND SHOULD NOT BE USED WITHOUT WRITTEN PERMISSION | | | |

NOTE:

- CONNECTOR LAND CONDITIONS SHALL MEET THE MOST CURRENT REVISION OF PCB SPECIFICATION IPC-6012C-2010 SECTION 3.5.4.4.
- DIMENSIONS APPLY TO LANDS ON BOTH SIDES OF THE BOARD.
- THE THICKNESS OF THE OUTER METAL LAYERS, INCLUDING FOIL, COPPER PLATING, AND THE PROTECTIVE SURFACE FINISH, SHALL BE 0.066mm MAX.
- CHAMFER ROUGHNESS NOT TO EXCEED 3.17 MICROMETERS.
- CHAMFER PROCESS SHALL NOT DAMAGE THE GOLD EDGE LANDS.
- EDGE CARD CHAMFER NOT TO GO THRU GOLD LANDS.
- 0.03mm MAX PLATING OVERHANG ON ALL GOLD LAND EDGES.
- MOLEX RECOMMENDS NO TIE-BARS ON THE LEADING EDGE OF THE GOLD LAND. IF TIE-BARS ARE USED, THEY SHALL BE PLACED TO ONE SIDE OF THE GOLD LAND. APPLIES TO ALL GOLD LANDS.



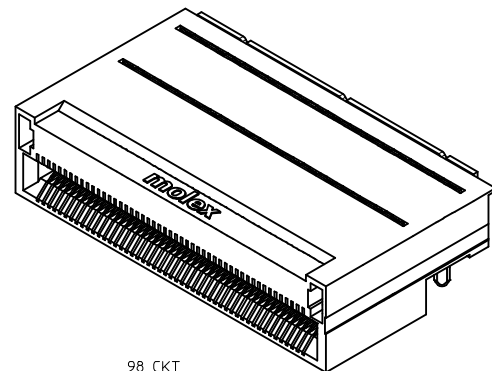
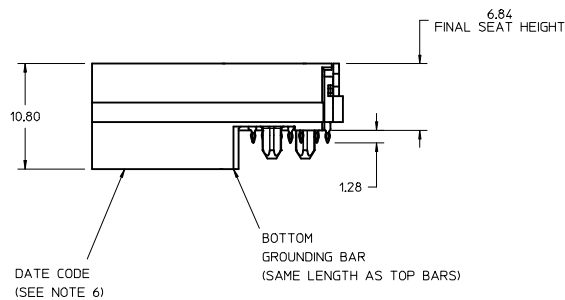
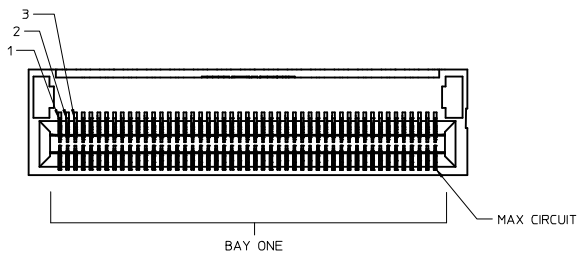
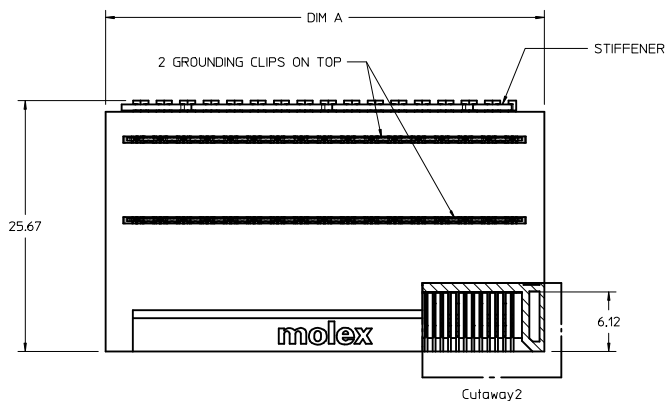
| | | | | | | |
|---|-------------------|--|-----------------|-------------------------------|--------------|------------------------|
| SEE SHEET 1 EC NO: UCP2015-3035 DRWNSVANG01 2015/01/28 CHKD:MWOLFE 2015/01/28 APPR:SMILLER 2015/02/02 | QUALITY SYMBOLS | GENERAL TOLERANCES (UNLESS SPECIFIED) | DIMENSION STYLE | SCALE | DESIGN UNITS | THIRD ANGLE PROJECTION |
| | ∇=0 ∇=0 ∇=5 | 4 PLACES ±--- INCH 3 PLACES ±--- INCH 2 PLACES ±0.13 INCH 1 PLACE ±0.25 INCH 0 PLACE ±--- INCH | mm INCH | MM ONLY | 4:1 | METRIC |
| ANGULAR ±1/2° DRAFT WHERE APPLICABLE MUST REMAIN WITHIN DIMENSIONS | | MATERIAL NO. SEE TABLE | | DOCUMENT NO. SD-172066-001 | | SHEET NO. 5 OF 6 |
| THIS DRAWING CONTAINS INFORMATION THAT IS PROPRIETARY TO MOLEX INCORPORATED AND SHOULD NOT BE USED WITHOUT WRITTEN PERMISSION | | | | | | |



ONE BAY EXAMPLE
SEE ADDITIONAL DIMENSIONS AND NOTES ON SHEET 5

| | | | | | | | | | |
|--|---|--|----------------------|--|--------------------------------------|------------------------|------------------------|--|--|
| SEE SHEET 1 IEC NO: UCP2015-3035 DRAWN BY: CHYK WOLFE CHECKED BY: MPOFF APPR: SMILLER DATE: 2015/01/28 DATE: 2015/01/28 DATE: 2015/02/02 | QUALITY SYMBOLS ▽=0 ▽=0 ▽=0 | GENERAL TOLERANCES (UNLESS SPECIFIED) | | DIMENSION STYLE MM ONLY | SCALE 15:1 | DESIGN UNITS METRIC | THIRD ANGLE PROJECTION | | |
| | | 4 PLACES ± mm ± INCH | 3 PLACES ± --- ± --- | DRAWN BY: MPOFF DATE: 2014/08/01 | TITLE .062 COPLANAR SALES DRAWING | | | | |
| | | 2 PLACES ± 0.13 ± --- | 1 PLACE ± 0.25 ± --- | CHECKED BY: MPOFF DATE: 2014/08/01 | MATERIAL NO. SEE TABLE | | | | |
| | | 0 PLACE ± --- ± --- | ANGULAR ± 1/2° | APPROVED BY: SMILLER DATE: 2014/08/15 | DOCUMENT NO. SD-172066-001 | SHEET NO. 6 OF 6 | | | |

THIS DRAWING CONTAINS INFORMATION THAT IS PROPRIETARY TO MOLEX INCORPORATED AND SHOULD NOT BE USED WITHOUT WRITTEN PERMISSION



98 CKT
SINGLE BAY EXAMPLE

172066-***

NUMBER OF CIRCUITS
PLATING:
0 = 0.38 MICROMETERS (15 MICROINCHES) GOLD
9 = 0.76 MICROMETERS (30 MICROINCHES) GOLD

- 1 = 3 GROUND CLIPS / GROUND WAFERS NOT SINGULATED
- 2 = 3 GROUND CLIPS / GROUND WAFERS SINGULATED
- 3 = 2 CLIPS ON TOP / GROUND WAFERS NOT SINGULATED
- 5 = 2 CLIPS ON TOP / GROUND WAFERS SINGULATED
- 6 = NO GROUND CLIPS / GROUND WAFERS NOT SINGULATED
- 7 = NO GROUND CLIPS / GROUND WAFERS SINGULATED

NOTES:

1. MATERIAL -
CONNECTOR HOUSING: GLASS FILLED LCP, 94V-0, BLACK
OVERMOLDING ON TERMINALS: GLASS FILLED LCP, 94V-0, BLACK
TERMINALS: COPPPER ALLOY, SPRING TEMPER
GROUNDING BAR: COPPER ALLOY
STIFFENER: 400 SERIES STAINLESS
2. TERMINAL FINISH (LEAD-FREE)
CONTACT AREA: 0.384mm OR 0.764mm HARD GOLD OVER 3.84mm MIN NICKEL,
COMPLIANT PIN AREA: .075-1.504mm MATTE TIN OVER 1.254mm MIN. NICKEL.
3. REFER TO PRODUCT SPEC, PS-170305-0001 FOR ALL ELECTRICAL, MECHANICAL AND ENVIROMENTAL SPECIFICATIONS.
4. REFER TO PK-170305-0001 FOR ALL PACKAGING SPECIFICATIONS.
5. REFER TO AS-170305-0001 FOR ALL APPLICATION INFORMATION.
6. REFER TO AS-170305-0002 FOR ROUTING GUIDE RECOMMENDATIONS.
7. DATE CODE AND ASSEMBLY PART NUMBER TO BE LASER ETCHED OR ON LABEL LOCATED ON THE BOTTOM OF THE PART. DATE CODE TO BE IN THE FORMAT OF, DAY OF THE YEAR AND LAST DIGIT OF THE YEAR, (DDDDYY).

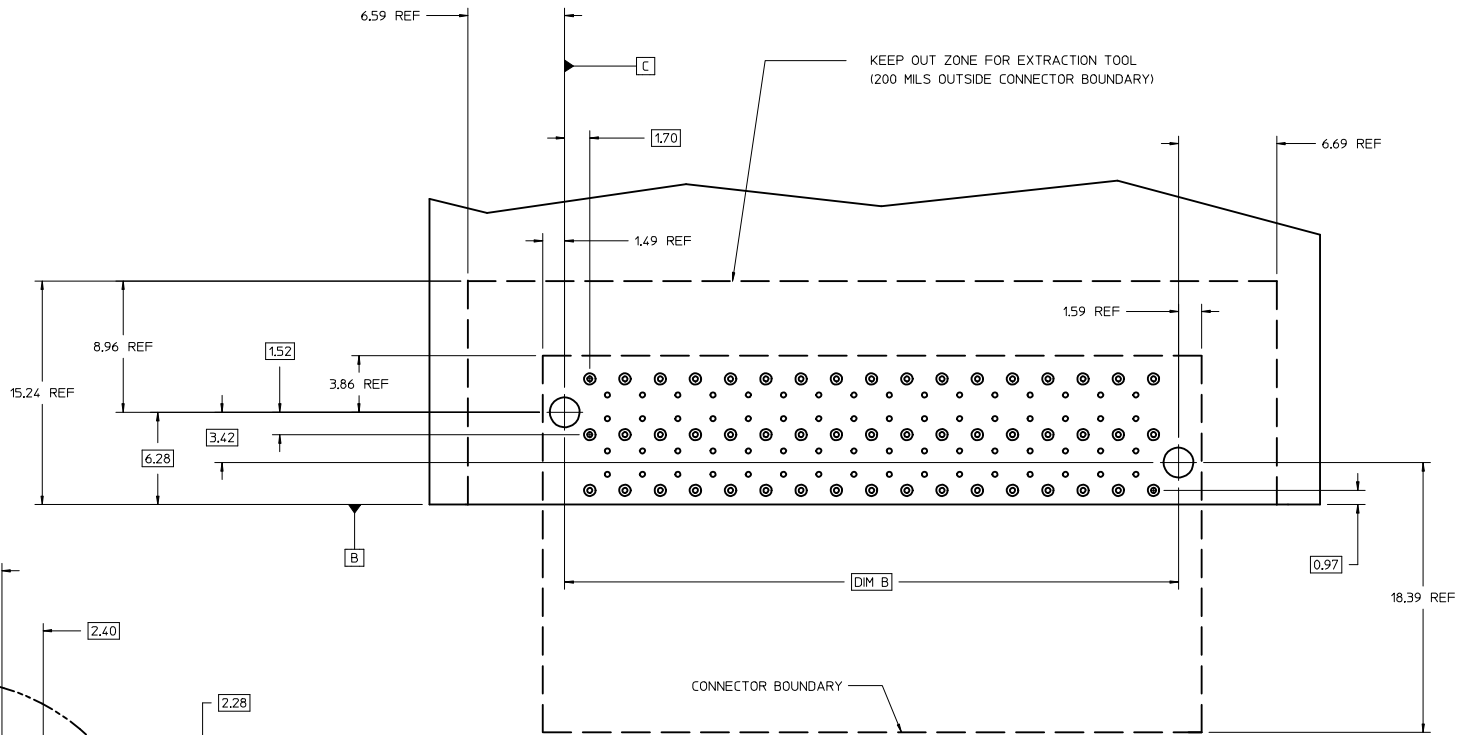
| PART NUMBER | CIRCUITS | TOOLED | BAY | DIM A | BAY ONE | BAY TWO | BAY THREE | DIM B | DIM C | DIM D | DIM E |
|-------------|----------|--------|--------|--------|-------------|-------------|-------------|--------|-------|-------|-------|
| 172066-**50 | 50 | NO | SINGLE | 25.69 | 50 CIRCUITS | N/A | N/A | 22.60 | 21.00 | N/A | N/A |
| 172066-**62 | 62 | NO | SINGLE | 30.49 | 62 CIRCUITS | N/A | N/A | 27.40 | 25.80 | N/A | N/A |
| 172066-**80 | 80 | NO | SINGLE | 37.69 | 80 CIRCUITS | N/A | N/A | 34.60 | 33.00 | N/A | N/A |
| 172066-**98 | 98 | YES | SINGLE | 44.89 | 98 CIRCUITS | N/A | N/A | 41.80 | 40.20 | N/A | N/A |
| 172066-**18 | 118 | NO | DOUBLE | 54.49 | 56 CIRCUITS | 62 CIRCUITS | N/A | 51.40 | 23.70 | 26.10 | N/A |
| 172066-**54 | 154 | NO | DOUBLE | 68.89 | 74 CIRCUITS | 80 CIRCUITS | N/A | 65.80 | 30.90 | 33.30 | N/A |
| 172066-**74 | 174 | NO | TRIPLE | 78.49 | 56 CIRCUITS | 62 CIRCUITS | 56 CIRCUITS | 75.40 | 26.40 | 23.70 | 50.10 |
| 172066-**16 | 216 | NO | TRIPLE | 95.29 | 70 CIRCUITS | 76 CIRCUITS | 70 CIRCUITS | 92.20 | 32.00 | 29.30 | 61.30 |
| 172066-**46 | 246 | NO | TRIPLE | 107.29 | 80 CIRCUITS | 86 CIRCUITS | 80 CIRCUITS | 104.20 | 36.00 | 33.30 | 69.30 |

| | | | | | | |
|--|--|---------------------------------------|---|---------------|--------------|------------------------|
| REV. PCB 0 G. 10 SHT 4 EC NO: UCP2015-3035 D: DRWNSVANG01 2015/01/28 CHYKMWOLFEE 2015/01/28 APPROXSMILLER 2015/02/02 DESCRIPTION | QUALITY SYMBOLS | GENERAL TOLERANCES (UNLESS SPECIFIED) | DIMENSION STYLE | SCALE | DESIGN UNITS | THIRD ANGLE PROJECTION |
| | ▽=0 | mm | MM ONLY | 4:1 | METRIC | ☉ |
| | ▽=0 | INCH | | | | |
| | ▽=0 | ANGULAR ±1/2° | | | | |
| | DRAFT WHERE APPLICABLE MUST REMAIN WITHIN DIMENSIONS | | MATERIAL NO. | DOCUMENT NO. | | |
| | | | SEE TABLE | SD-172066-001 | | |
| | | | THIS DRAWING CONTAINS INFORMATION THAT IS PROPRIETARY TO MOLEX INCORPORATED AND SHOULD NOT BE USED WITHOUT WRITTEN PERMISSION | | | |

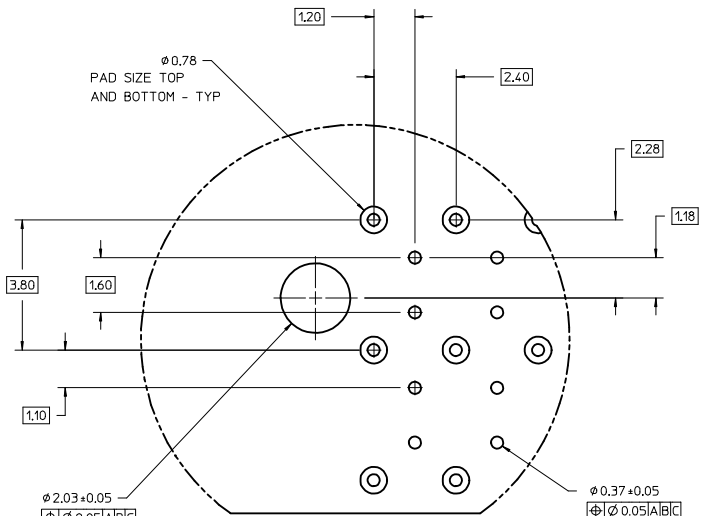
.062 COPLANAR SALES DRAWING

molex

SHEET NO. 1 OF 6



98 CKT
SINGLE BAY EXAMPLE

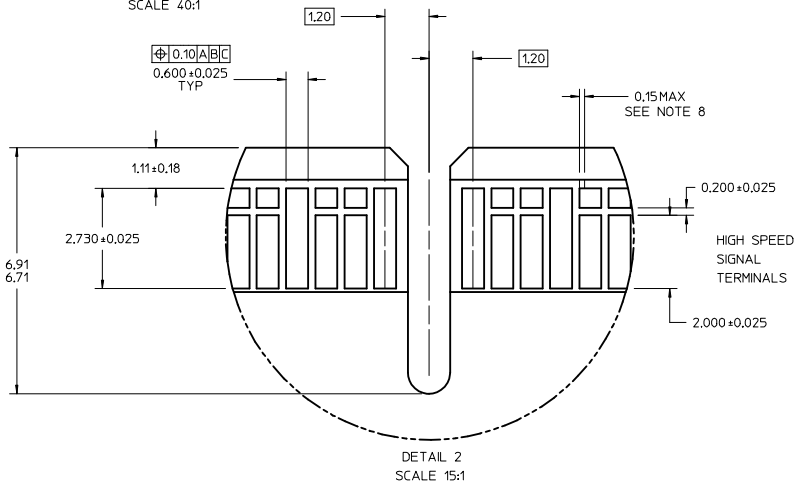
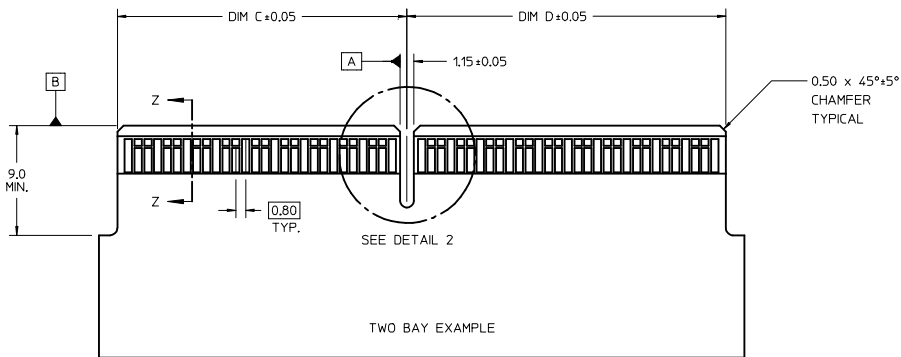
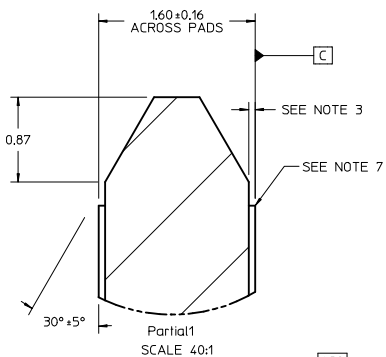
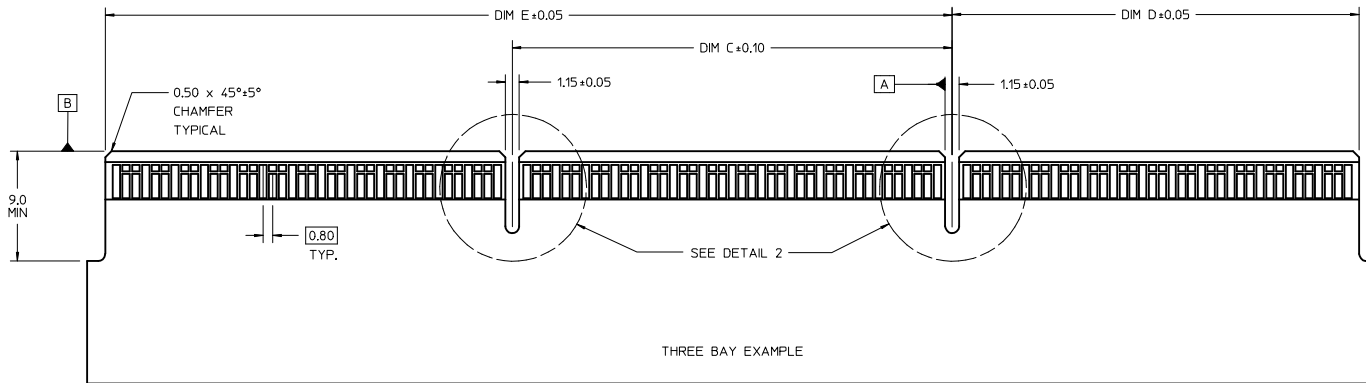


RECOMMENDED TAIL PATTERN
SEE AS-170305-0002 FOR
INTERNAL ANTI-PAD SPECIFICATION
DETAIL 1
SCALE 14:1

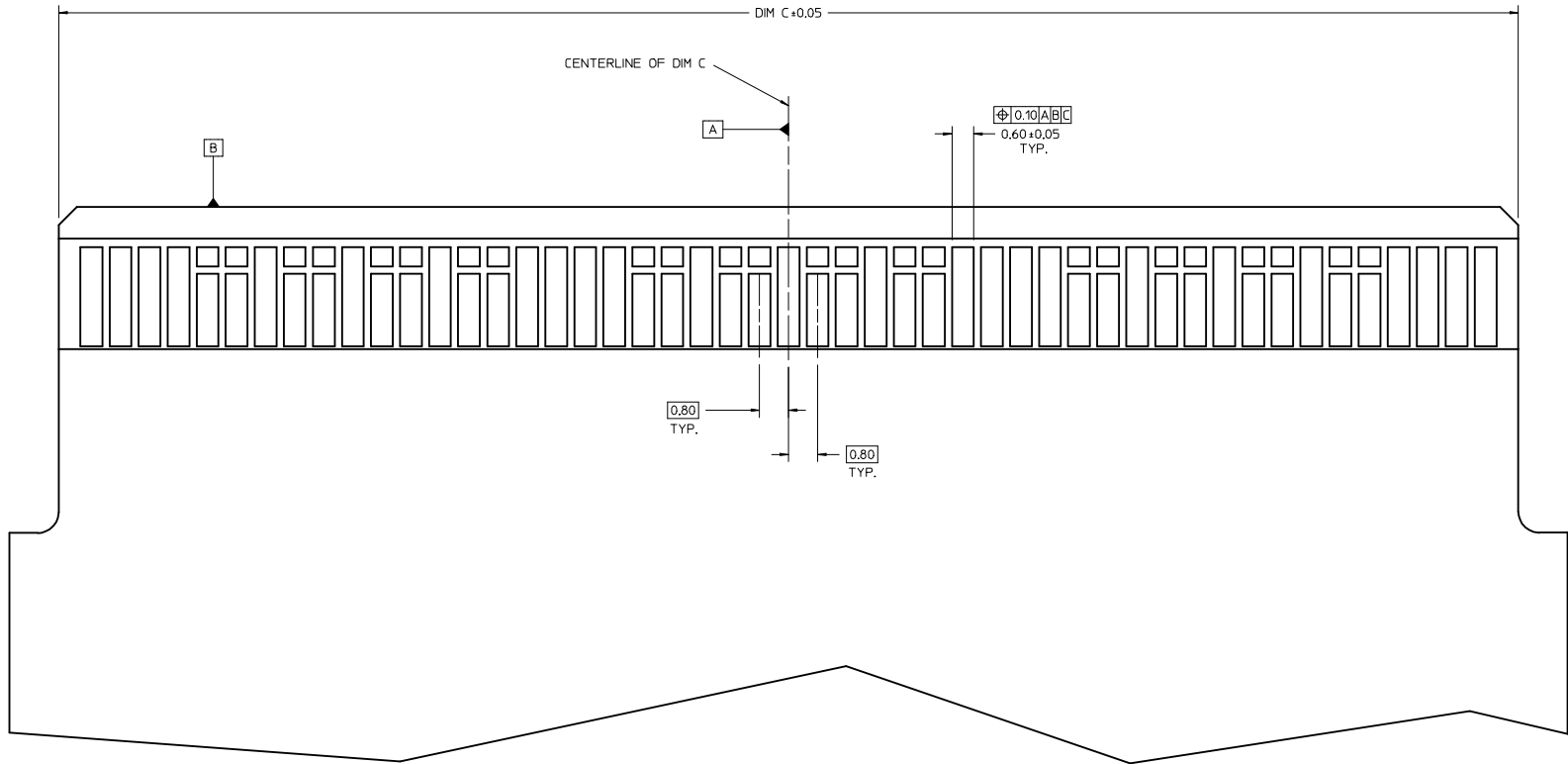
| | | | | | | | |
|--|---|--|--------------------------------|---|--|------------------------|------------------------------------|
| SEE SHEET 1 EC NO: UCP2015-3035 DRAWNSVANG01 2015/01/28 CHKD:MWOLFE 2015/01/28 APPR:SMILLER 2015/02/02 | QUALITY SYMBOLS | GENERAL TOLERANCES (UNLESS SPECIFIED) | DIMENSION STYLE | SCALE | DESIGN UNITS | THIRD ANGLE PROJECTION | |
| | $\nabla=0$ $\nabla=0$ $\nabla=0$ | 4 PLACES ±--- ±--- 3 PLACES ±--- ±--- 2 PLACES ±0.13 ±--- 1 PLACE ±0.25 ±--- 0 PLACE ±--- ±--- | MM ONLY INCH | DRAWN BY: MWOLFE CHECKED BY: MPOFF APPROVED BY: SMILLER | DATE: 2014/08/01 DATE: 2014/08/01 DATE: 2014/08/15 | METRIC | TITLE: .062 COPLANAR SALES DRAWING |
| | ANGULAR ±1/2° DRAFT WHERE APPLICABLE MUST REMAIN WITHIN DIMENSIONS | MATERIAL NO.: SEE TABLE | DOCUMENT NO.: SD-172066-001 | SHEET NO.: 3 OF 6 | | | |
| | THIS DRAWING CONTAINS INFORMATION THAT IS PROPRIETARY TO MOLEX INCORPORATED AND SHOULD NOT BE USED WITHOUT WRITTEN PERMISSION | | | | | | |

NOTE:

- CONNECTOR LAND CONDITIONS SHALL MEET THE MOST CURRENT REVISION OF PCB SPECIFICATION IPC-6012C-2010 SECTION 3.5.4.4.
- DIMENSIONS APPLY TO LANDS ON BOTH SIDES OF THE BOARD.
- THE THICKNESS OF THE OUTER METAL LAYERS, INCLUDING FOIL, COPPER PLATING, AND THE PROTECTIVE SURFACE FINISH, SHALL BE 0.066mm MAX.
- CHAMFER ROUGHNESS NOT TO EXCEED 3.17 MICROMETERS.
- CHAMFER PROCESS SHALL NOT DAMAGE THE GOLD EDGE LANDS.
- EDGE CARD CHAMFER NOT TO GO THRU GOLD LANDS.
- 0.03mm MAX PLATING OVERHANG ON ALL GOLD LAND EDGES.
- MOLEX RECOMMENDS NO TIE-BARS ON THE LEADING EDGE OF THE GOLD LAND. IF TIE-BARS ARE USED, THEY SHALL BE PLACED TO ONE SIDE OF THE GOLD LAND. APPLIES TO ALL GOLD LANDS.



| | | | | | | |
|---|-------------------|--|-----------------|-------------------------------|--------------|------------------------|
| SEE SHEET 1 EC NO: UCP2015-3035 DRWNSVANG01 2015/01/28 CHKD:MWLF 2015/01/28 APPR:SMILLER 2015/02/02 | QUALITY SYMBOLS | GENERAL TOLERANCES (UNLESS SPECIFIED) | DIMENSION STYLE | SCALE | DESIGN UNITS | THIRD ANGLE PROJECTION |
| | ∇=0 ∇=0 ∇=5 | 4 PLACES ±--- INCH 3 PLACES ±--- INCH 2 PLACES ±0.13 INCH 1 PLACE ±0.25 INCH 0 PLACE ±--- INCH | mm INCH | MM ONLY | 4:1 | METRIC |
| ANGULAR ±1/2° DRAFT WHERE APPLICABLE MUST REMAIN WITHIN DIMENSIONS | | MATERIAL NO. SEE TABLE | | DOCUMENT NO. SD-172066-001 | | SHEET NO. 5 OF 6 |
| THIS DRAWING CONTAINS INFORMATION THAT IS PROPRIETARY TO MOLEX INCORPORATED AND SHOULD NOT BE USED WITHOUT WRITTEN PERMISSION | | | | | | |



ONE BAY EXAMPLE
SEE ADDITIONAL DIMENSIONS AND NOTES ON SHEET 5

| | | | | | | | | | |
|--|---|--|--|---|---------------|---------------------------|------------------------|-------------------------------|---------------------|
| SEE SHEET 1 IEC NO: UCP2015-3035 DRAWN BY: CHYK WOLFE CHECKED BY: MPOFF APPR: SMILLER DATE: 2015/01/28 DATE: 2015/01/28 DATE: 2015/02/02 | QUALITY SYMBOLS ∇=0 ∇=0 ∇=0 | GENERAL TOLERANCES (UNLESS SPECIFIED) | | DIMENSION STYLE MM ONLY | SCALE 15:1 | DESIGN UNITS METRIC | THIRD ANGLE PROJECTION | | |
| | | 4 PLACES ± mm INCH 3 PLACES ± --- ± --- 2 PLACES ± 0.13 ± --- 1 PLACE ± 0.25 ± --- 0 PLACE ± --- ± --- | DRAWN BY: MPOFF DATE: 2014/08/01 CHECKED BY: MPOFF DATE: 2014/08/01 APPROVED BY: SMILLER DATE: 2014/08/15 | TITLE .062 COPLANAR SALES DRAWING | | MATERIAL NO. SEE TABLE | | DOCUMENT NO. SD-172066-001 | SHEET NO. 6 OF 6 |
| | | ANGULAR ±1/2° DRAFT WHERE APPLICABLE MUST REMAIN WITHIN DIMENSIONS | | THIS DRAWING CONTAINS INFORMATION THAT IS PROPRIETARY TO MOLEX INCORPORATED AND SHOULD NOT BE USED WITHOUT WRITTEN PERMISSION | | | | | |
| | | | | SIZE D | | | | | |