

- EFD20 Core Design
- Wire Wound SMD Low Profile Design
- Operating Temperature range: -40°C to +130°C

**Specifications @25°C**

Inductance L @ 100KHz, 0.8V (1,2-3,4)	Leakage Inductance LK @ 100KHz, 0.8V (1,2-3,4) (with 7,8,9,10,11,12 Shorted)	DC Resistance			
		R(1 - 3)	R(2 - 4)	R(5 - 6)	R(12,11,10-9,8,7)
4.50uH (±5%)	.25uH Max	20mΩ Max	18mΩ Max	130mΩ Max	3mΩ Max

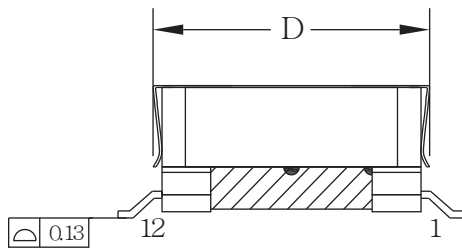
**Specifications @25°C**

Turns Ratio @ 100KHz, 0.1V			Hi-Pot		
(1-3) : (2-4)	(1-3) : (5-6)	(1-3) : (12,11,10-9,8,7)	1,2,3,4,5,6 to 7,8,9,10,11,12	1,2,3,4,5,6,7,8,9,10,11,12 to CORE	1,2,3,4 to 5,6
1 : 1±3%	0.857 : 1±3%	3 : 1±3%	1800VAC/SEC	600VAC/SEC	600VAC/SEC

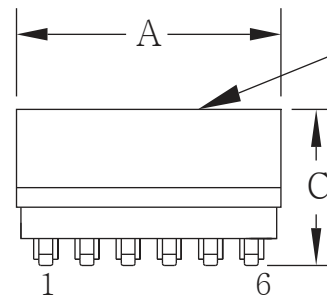
All specifications subject to change without notice.

**MECHANICAL**

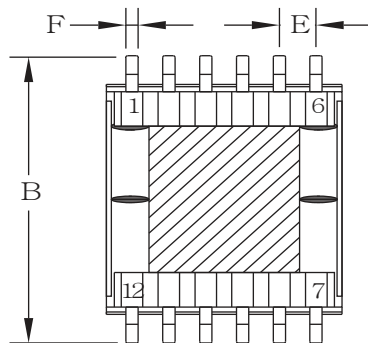
UNIT: mm



SIDE VIEW



FRONT VIEW



BOTTOM VIEW

Allied  
AEFD20-4251  
YYWW

A	B	C	D	E	F
21.84	29.21	11.43	24.00	3.00	0.70
MAX	MAX	MAX	MAX	±0.50	±0.15



SCHEMATICS

