

Double shield support AB-SK 65-D

1. Description

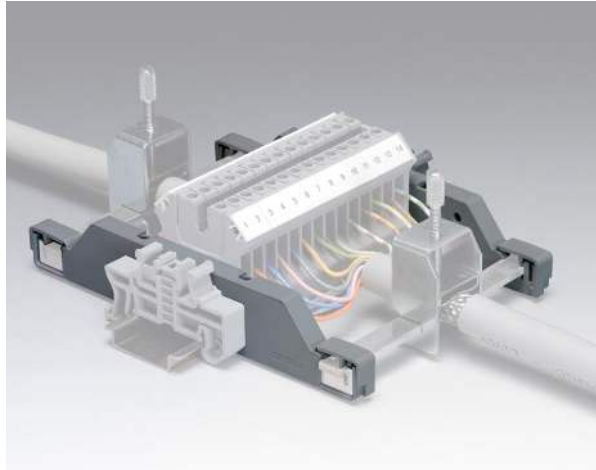
For the SK shield terminal system there is now a solution for supporting cable shields on both sides. The double support is simply engaged onto the mounting rail for connection. The support is offering a holding fixture for the neutral conductor bus bar 3 x 10 mm on both sides of the mounting rail. On this fixture the cable shield is mounted by means of the well-known shield terminal SK... There are two different versions of the double support available:

AB-SK 65-D

In this solution both sides of the support are contacted to each other and are directly connected to the mounting rail. Thus the interference potential is directly dissipated to PE.

AB-SK 65-D Isolated

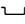
In contrast to the previous version there is no dissipation plate integrated in the support. Due to this both sides are independent of each other and are not directly connected to the mounting rail. This construction is needed if the cable shield is not connected directly to the PE, but shall be lead from the neutral conductor bus bar to a neutral point.





2. Technical data

2.1. Description

Double support,
for assembly on the mounting rail ,
for 3 x 10 mm bus bars

gray

Type

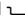

AB-SK 65-D

Order No.

30 26 90 0

Pcs.
Pkt.

10

Double support,
for assembly on the mounting rail , no contact to the
mounting rail , for 3 x 10 mm bus bars

gray

AB-SK 65-D ISOLATED

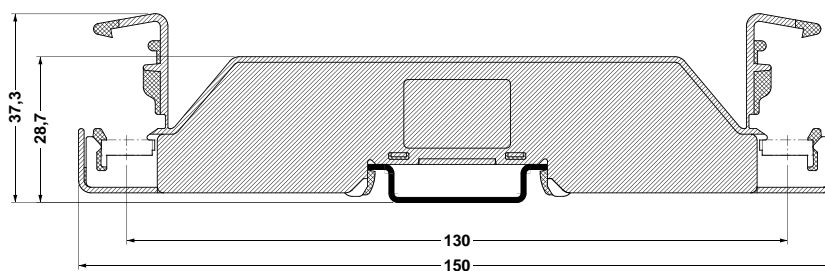
30 40 88 9

10

2.2. General data

Width [mm]
Material
Inflammability class in acc. with UL 94

8,2
PA
V0



AB-SK 65-D