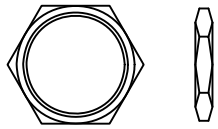
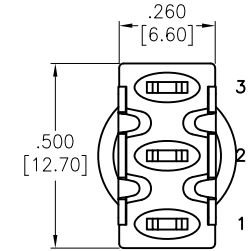
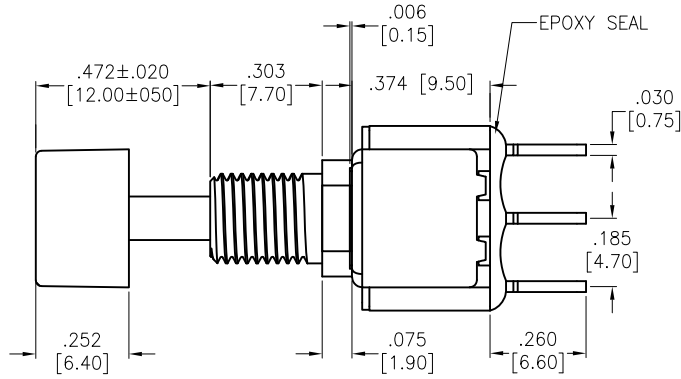
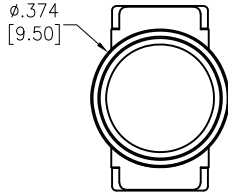
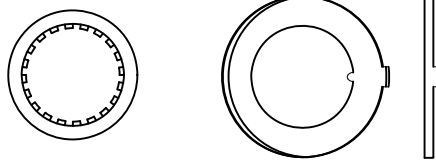


APPROVED: _____
 DATE: _____ TITLE: _____

Rev	AWO #	Description	Date	Appr
-		RELEASED	3/4/21	



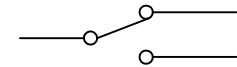
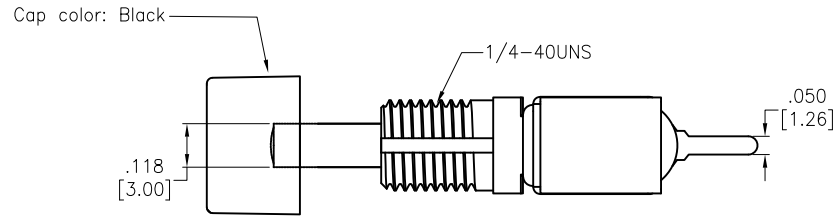
HEX NUT



LOCK WASHER

ANTI ROTATIONAL WASHER

INCLUDED HARDWARE



CIRCUIT DIAGRAM
(SPDT) ON-ON

SPECIFICATIONS:

Material:
 Movable Contact: Copper Alloy, Silver Plated
 Terminal: Copper Alloy, Silver Plated
 Electrical:
 Rating:
 6 Amps with resistive load @ 125VAC or 28VDC
 3 Amps with resistive load @ 250VAC
 Contact resistance: 10 mΩ max
 Insulation resistance: 1,000 Mohms min
 Dielectric withstanding voltage: 1,500V RMS @Sea level
 Temperature Rating:
 Operating temperature: -30°C to +85°C
 Environmental:
 Lead free, RoHS compliant



UNLESS OTHERWISE SPECIFIED ALL DIMENSIONS ARE INCHES [MM] TOLERANCES: EXCEPT AS NOTED INCHES HOLES		
.X ± .10	Ø.X ± .10	
.XX ± .020	Ø.XX ± .015	
.XXX ± .015	Ø.XXX ± .010	
APPROVALS		DATE
DRAWN	WX	3/4/21
CHECKED	AC	3/4/21
APPROVED		

ADAM TECH 909 Rahway Avenue,
 Union, NJ 07083
 Phone: 908-687-5000
 Fax: 908-687-5710

TITLE
**PUSHBUTTON SWITCH, ON-ON, SPDT
 COPPER ALLOY SILVER PLATED, PCB TYPE**

SIZE X	PART NO. SW-PB8-AA22A2QE-3	REV. -
REF: S00198T	SCALE: NTS	SHEET 1 OF 1