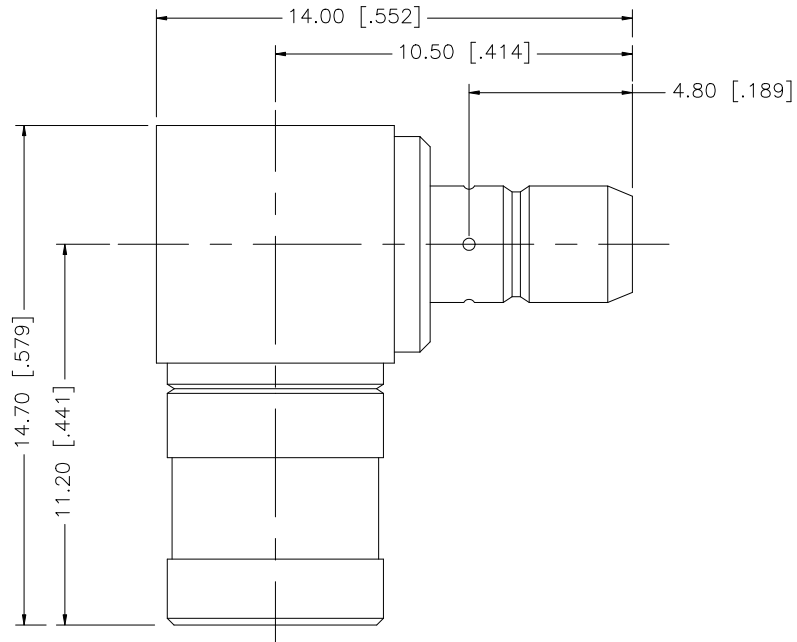


REV.	DATE	DESCRIPTION
NC	09/06/07	INITIAL RELEASE



8				<small>UNLESS OTHERWISE SPECIFIED DIMENSIONS ARE IN MILLIMETERS. DIMENSIONS IN [] ARE IN INCHES AND FOR CUSTOMER REFERENCE ONLY.</small> <small>UNLESS OTHERWISE SPECIFIED TOLERANCES FOR MILLIMETERS ARE:</small> 0.5 - 8mm ± 0.20mm 8 - 30mm ± 0.40mm 30 - 120mm ± 0.50mm <small>UNLESS OTHERWISE SPECIFIED TOLERANCES FOR INCHES ARE:</small> .020 - .315 = ± 0.007" .315 - 1.180 = ± 0.015" 1.180 - 4.724 = ± 0.020"	APPROVALS	DATE	<h1 style="color: blue;">Amphenol Connex</h1>			
7					DRAWN	G.R.S.		09/06/07	PART DESCRIPTION SMB MALE TO SMB FEMALE R/A ADAPTER	
6					CHECKED					
5					ISSUED					
4					SHEET	1 OF 1			PART NO.	
3	CONTACT PIN	BER. COPPER	GOLD	1			142248			
2	INSULATOR	TEFLON	NATURAL	1						
1	BODY	BRASS	GOLD	1						
	DESCRIPTION	MATERIAL	FINISH	QTY	DO NOT SCALE DRAWING	CAD FILE	DWG. NO.	REV.	SIZE	SCALE
						C:/142/142248.DWG	142248.DWG	NC	A	NA