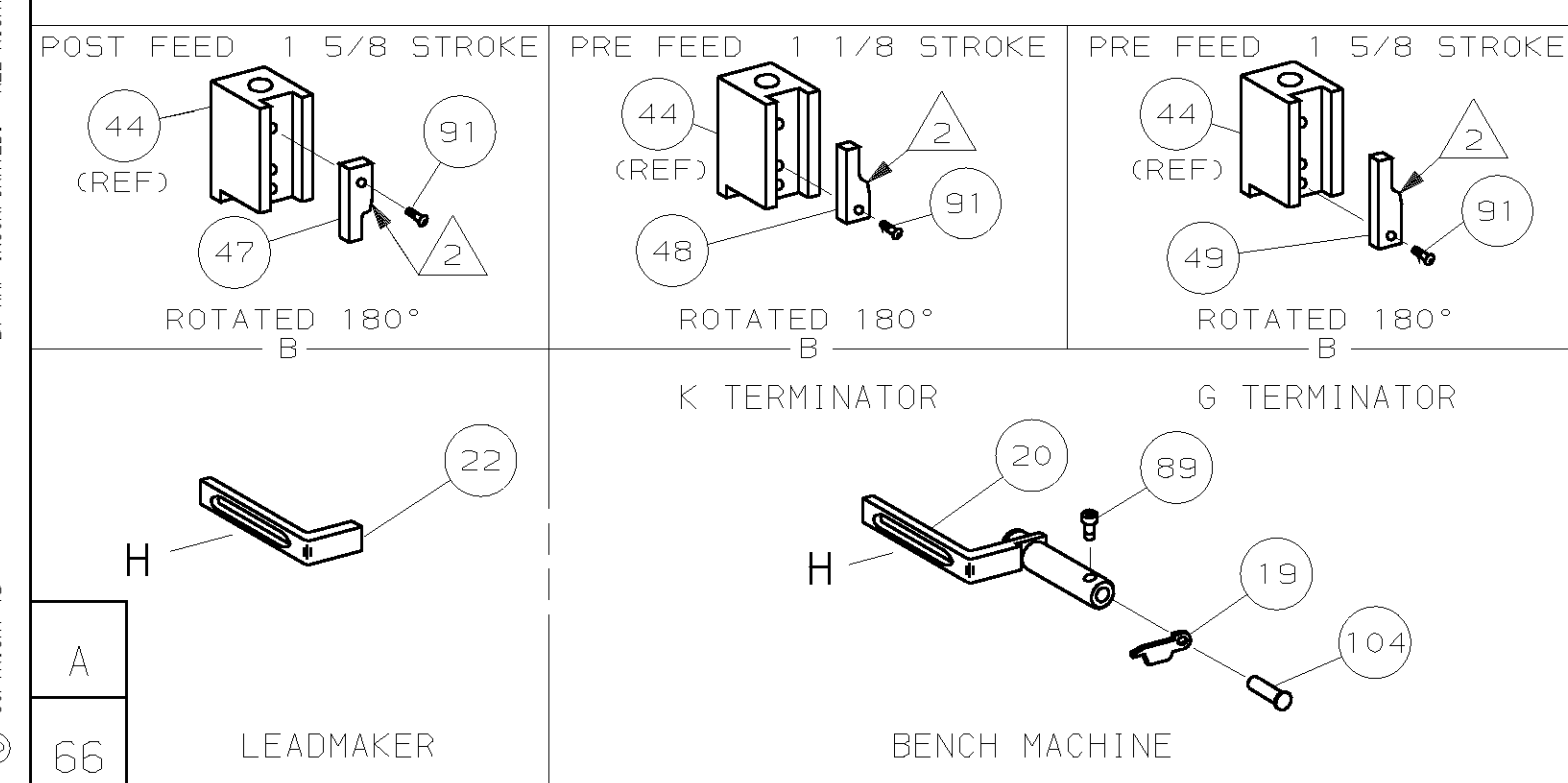
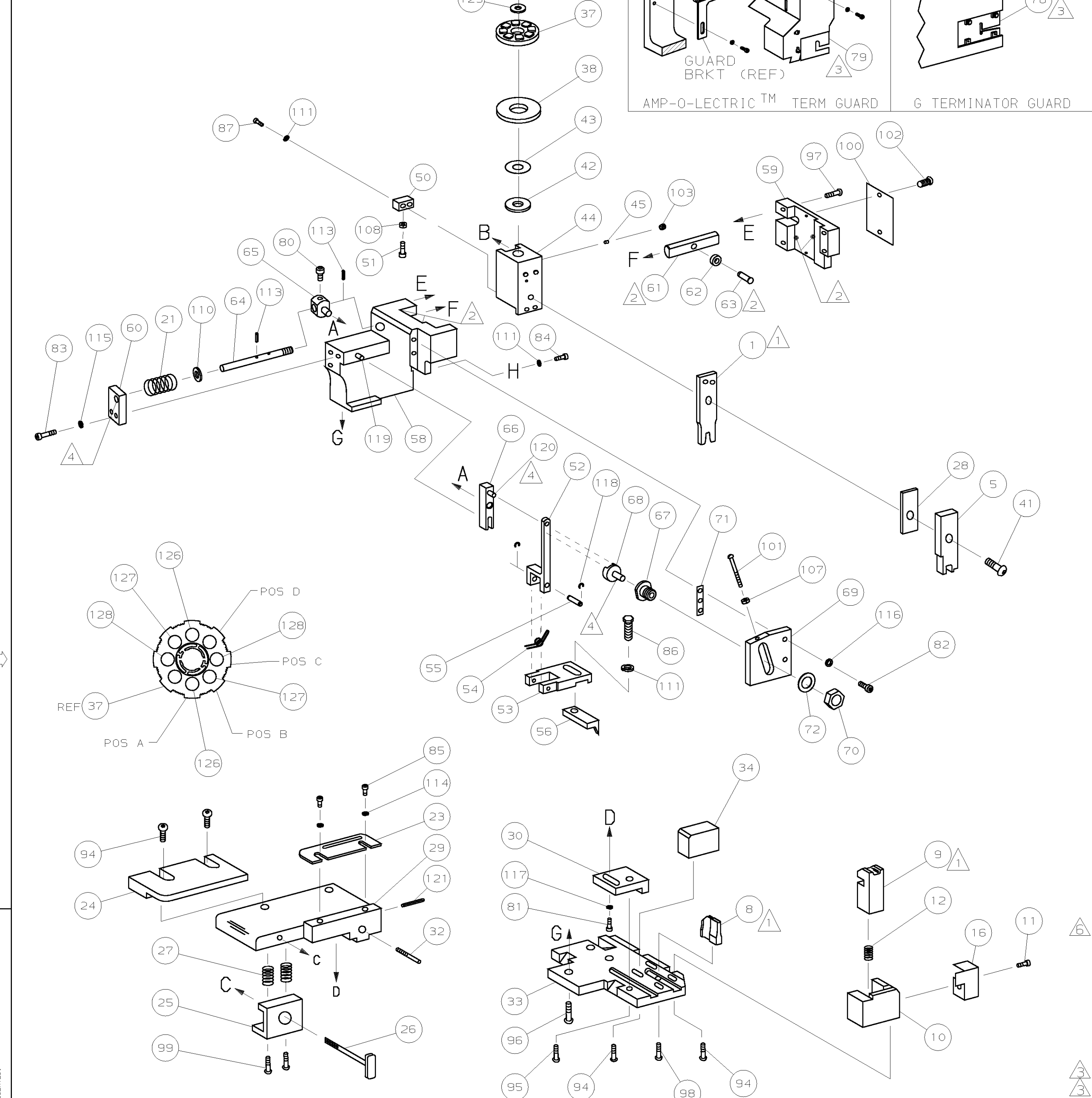


PART NUMBER	REV	FIRST USED
680325	C	122500-1
680325	C	565435-5
680325	C	354500-1



- 1 RECOMMENDED SPARE PARTS.
- 2 GREASE LIGHTLY.
- 3 GUARD MUST BE IN PLACE WHEN OPERATING APPLICATOR IN A BENCH MACHINE.
- 4 LUBRICATE DAILY USING NO. 20 MACHINE OIL.
- 5. ITEMS WITH QTY OF REF SPECIFIED (EXCEPT ITEMS 78 AND 79) ARE USED ON ITEM 46.
- 6 CUT TO LENGTH AT ASSY

WIRE STRIP LENGTH		TERM APPL SPEC	FEED	APPL INSTRUCTION	SET UP GAGE	LAYOUT
-		114-2036	.540	408-8040	458637-1	L1784

QTY REOD PER ASSY		PARTS LIST	
2	2	2	- C 9-354778-7 PIN, WIRE DISC (.2980)C 129
2	2	2	- C 8-354778-3 PIN, WIRE DISC (.2910)B 127
2	2	2	- C 6-354778-3 PIN, WIRE DISC (.2810)A 126
1	1	1	- A 986950-1 WASHER, FLAT PRECISION 125
1	1	1	- A 217238-1 GENERAL INSTRUCTION PACKAGE 124
1	1	1	- 4088040 SF APPL INST 408-8040 123
1	1	1	- A 4-21028-0 PIN, SLT SPR (ø.093x.75) ST GDE PL 121
REF	REF	REF	- A 1-21030-1 PIN, DOWEL (ø.187x.50) LEVER 120
REF	REF	REF	- A 1-21030-6 PIN, DOWEL (ø.187x1.25) HOUSING 119
REF	REF	REF	- A 21045-3 RING, RET "C" (ø.187) FD FING PIN 118
1	1	1	- A 21024-5 WASHER, LOCK (#10) ADJ BLOCK 117
REF	REF	REF	- A 21024-5 WASHER, LOCK (#10) ADJ PLATE 116
REF	REF	REF	- A 21024-5 WASHER, LOCK (#10) FEED GDE ROD 115
2	2	2	- A 21024-2 WASHER, LOCK (#4) FRONT STP GUIDE 114
REF	REF	REF	- A 5-21028-1 PIN, SLT SPR (ø.125x.50) ADJ ROD 113
4	4	4	- A 21024-4 WASHER, LOCK (#8) STRIPPER 111
REF	REF	REF	- A 21899-4 WASHER, FLAT (ø5/16) SCREW ADJ 110
1	1	1	- A 21018-5 NUT, HEX (NO. 6) HOLDDOWN 108
REF	REF	REF	- A 21018-5 NUT, HEX (6-32) FEED ADJ 107
1	1	1	- A 992031-1 PIN, CLEVIS 105
1	1	1	- A 21009-2 SCR, SKT 5ET (1/4-20x.25 LW) RAM 103
2	2	2	- A 21017-2 SCR, DRIVE (#2x.19) ID PLATE 102
REF	REF	REF	- A 6-23715-5 SCR, PAN HD (6-32x1.50) FEED ADJ 101
1	1	1	- B 461264-1 PLATE, IDENTIFICATION 100
2	2	2	- A 3-21002-0 SCR, BHC (10-32x.88) DRAG 99
1	1	1	- A 22733-8 SCR, BHC (8-32x.38 LW) ANVIL 98
REF	REF	REF	- A 2-21002-9 SCR, BHC (10-32x.75) CAP 97
REF	REF	REF	- A 2-22733-8 SCR, BHC (1/4-20x.62) HOUSING 96
REF	REF	REF	- A 2-21002-7 SCR, BHC (10-32x.50) 56 ADJ BLOCK 95
6	6	6	- A 2-21002-2 SCR, BHC (8-32x.50) TERM H DWN 94
1	1	1	- A 1-21002-7 SCR, BHC (6-32x.38) CAM 91
1	1	-	- A 7-21000-9 SCR, SHC (4-40x.19) STRIPPER 89
2	2	2	- A 2-21000-7 SCR, SHC (8-32x.48) DEP-HOLD 87
1	1	1	- A 2-22603-0 SCR, HEX HD (8-32x.31) FEED FINGER 86
2	2	2	- A 1-21000-3 SCR, SHC (4-40x.25) F ST GUIDE 85
1	1	1	- A 2-21000-7 SCR, SHC (8-32x.50) STRIPPER 84
REF	REF	REF	- A 3-21000-7 SCR, SHC (10-32x.75) FEED ROD GD 83
REF	REF	REF	- A 3-21000-6 SCR, SHC (10-32x.62) FD ADJ BLK 82
1	1	1	- A 3-21000-4 SCR, SHC (10-32x.38) 56 ADJ BL 81
REF	REF	REF	- A 3-21000-4 SCR, SHC (10-32x.38) PIVOT BLK 80
-	REF	-	- B 455749-1 GUARD, WINDOW 79
REF	-	-	- B 679532-1 INSERT, GUARD 78
77			
76			
75			
74			
73			
REF	REF	REF	- A 458109-1 WASHER, SPECIAL 72
REF	REF	REF	- A 690517-1 SPACER 71

QTY REOD PER ASSY	REV	U/M	DWG SIZE	PART NO	DESCRIPTION	ITEM NO
-3	-2	-1	U/M			

LEADMAKER		MECH POST FEED			
-1	BENCH MODEL K	MECH PRE FEED			
-2	BENCH MODEL G	MECH PRE FEED			
REF	REF	REF	- B	22594-8	NUT, HEX (1/2-20) 70
REF	REF	REF	- B	240628-1	PLATE, ADJUSTMENT 69
REF	REF	REF	- B	240626-1	SHAFT, PIVOT 68
REF	REF	REF	- B	240633-1	BUSHING 67
REF	REF	REF	- A	455680-1	LEVER, INTERMEDIATE 66
REF	REF	REF	- B	240629-1	BLOCK, PIVOT 65
REF	REF	REF	- A	240632-2	SCREW, ADJ FEED ROD 64
REF	REF	REF	- B	240659-3	PIN, CAM ROLLER 63
REF	REF	REF	- B	240658-1	ROLLER, CAM 62
REF	REF	REF	- B	454398-2	ROD, FEED 61
REF	REF	REF	- A	454178-1	GUIDE, FEED ROD 60
REF	REF	REF	- C	454220-1	CAP, RAM 59
REF	REF	REF	- D	454485-1	HOUSING 58
1	1	1	- B	690542-2	PAWL, FEED 56
REF	REF	REF	- B	240624-1	PIN, FEED FINGER 55
REF	REF	REF	- B	691499-1	SPRING, FEED FINGER 54
REF	REF	REF	- B	690541-1	HOLDER, FEED FINGER 53
REF	REF	REF	- A	455679-1	LEVER, TERMINAL FEED ARM 52
1	1	1	- A	811242-2	BUMPER, HOLDDOWN 51
1	1	1	- A	690753-1	SPACER, TONKER 50
1	-	-	- B	690602-6	CAM, PRE-FEED 1 5/8 ST 49
-	1	-	- B	690602-5	CAM, PRE-FEED 1 1/8 ST 48
-	-	-	- B	690501-4	CAM, POST-FEED 1 5/8 ST 47
1	1	1	- B	459456-1	APPLICATOR, BASIC (SUBASSY) 46
1	1	1	- A	690191-1	PLUG, NYLON 45
1	1	1	- C	455673-1	RAM 44
1	1	1	- A	690125-1	WASHER, LAMINATED 43
1	1	1	- A	690124-1	WASHER, RAM 42
1	1	1	- A	7-21002-9	BOLT, CRIMPER (5/16x1.00) 41
1	1	1	- A	690223-2	SPACER, INSULATION DISC 38
1	1	1	- D	354777-1	WIRE DISC, PLASTIC 37
1	1	1	- A	22480-5	WASHER, SPRING 36
1	1	1	- B	690212-1	POST, RAM 35
1	1	1	- B	690786-2	SUPPORT, TERMINAL 34
REF	REF	REF	- D	455675-1	PLATE, BASE 33
1	1	1	- A	690432-3	SCREW, ADJUSTMENT 32
REF	REF	REF	- B	455689-1	BLOCK, STRIP GUIDE ADJ 30
1	1	1	- C	455671-1	PLATE, STRIP GUIDE 29
1	1	1	- C	2-455888-8	SPACER, FRONT SHEAR DEP 28
2	2	2	- A	1-22284-0	SPRING, DRAG 27
1	1	1	- B	690546-1	LEVER, DRAG RELEASE 26
1	1	1	- B	240792-1	DRAG, TERMINAL 25
1	1	1	- D	690440-6	GUIDE, STRIP (REAR) 24
1	1	1	- A	690438-1	GUIDE, STRIP (FRONT) 23
-	-	1	- B	690472-2	STRIPPER 22
REF	REF	REF	- A	4-22284-9	SPRING, FEED RETURN 21
1	1	-	- A	679218-1	STRIPPER WIRE STOP ASSY 20
1	1	-	- B	458949-1	STRIPPER 19
1	1	-	- B	318563-2	GUARD, CHIP, FRONT 16
1	1	1	- C	3-455889-3	DEPRESSOR, SHEAR (FRONT) 5
1	1	1	- A	5-22280-0	SPRING, SHEAR 12
1	1	1	- B	690461-1	STOP, SHEAR 11
1	1	1	- C	690459-9	HOLDER, SHEAR (FRONT) 10
1	1	1	- C	454276-4	SHEAR, FLOAT (FRONT) 9
1	1	1	- B	356599-1	ANVIL 8
1	1	1	- C	2-456408-9	CRIMPER, WIRE 1

DIMENSIONS IN INCHES. DO NOT SCALE PRINT. TOLERANCES UNLESS OTHERWISE SPECIFIED:		MATERIAL		FINISH	
2 PLC DEC ±	3 PLC DEC ±				
4 PLC DEC ±	ANGLES ±				
SURF TEXTURE: ✓	REMOVE BURRS, BREAK SHARP EDGES R.015 MAX				
DR M. OBRINE	19JUN96	APP T. ELBIN	6-19-96		
CHK 6-19-96	C. ERISMAN	REL			
NAME: SIDE FEED HDM APPLICATOR		MACHINE REF: MINI APPL			
SCALE: -	DWG NO: 680325	SHEET: 1 OF 1	REV: C1		

THIS DRAWING IS A CONTROLLED DOCUMENT.

THIS DRAWING IS UNRELEASED. RELEASE FOR PUBLICATION BY AMP INCORPORATED. ALL RIGHTS RESERVED. AMP 1756 REV 3-92