

ESB32 Middle Current Push Switches

Type: **ESB32(H=12.8 mm)**

■ Features

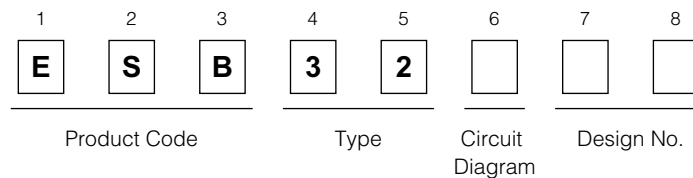
- Long travel
- Can be fitted to a printed circuit board.



■ Recommended Applications

- Operation switches for automobiles (overdrive, hazard and map lamp switches etc.)
- Used for detecting function in relay and solenoid controls

■ Explanation of Part Numbers



- 1: Lever height=25.0 mm, N.O.
- 2: Lever height=25.0 mm, N.C.
- 3: Lever height=23.0 mm, N.O.
- 4: Lever height=23.0 mm, N.C.

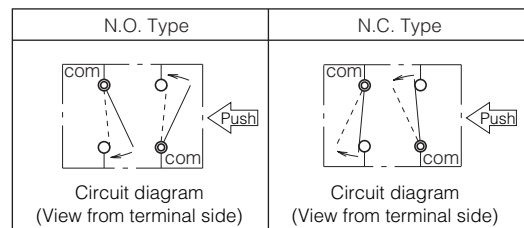
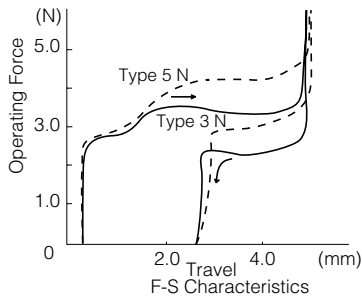
■ Specifications

| | |
|-------------------------------|---|
| Rating | 0.1 A 12 Vdc to 3 A 12 Vdc (Resistive load) |
| Travel | Lock Travel: 2.45 mm, Full Travel: 4.5 mm Lock Travel: 2.8 mm, Full Travel: 4.5 mm |
| Mounting Height | 12.8 mm |
| Poles and Throws | 2-poles 1-throw (N.O. type or N.C. type) |
| Operating Mode | Self-lock, Non-lock |
| Operating Force | 5.0 N±3.0 N, 3.5 N±1.5 N |
| Minimum Quantity/Packing Unit | 50 pcs. Polyethylene Bag (Bulk) |
| Quantity/Carton | 1000 pcs. |

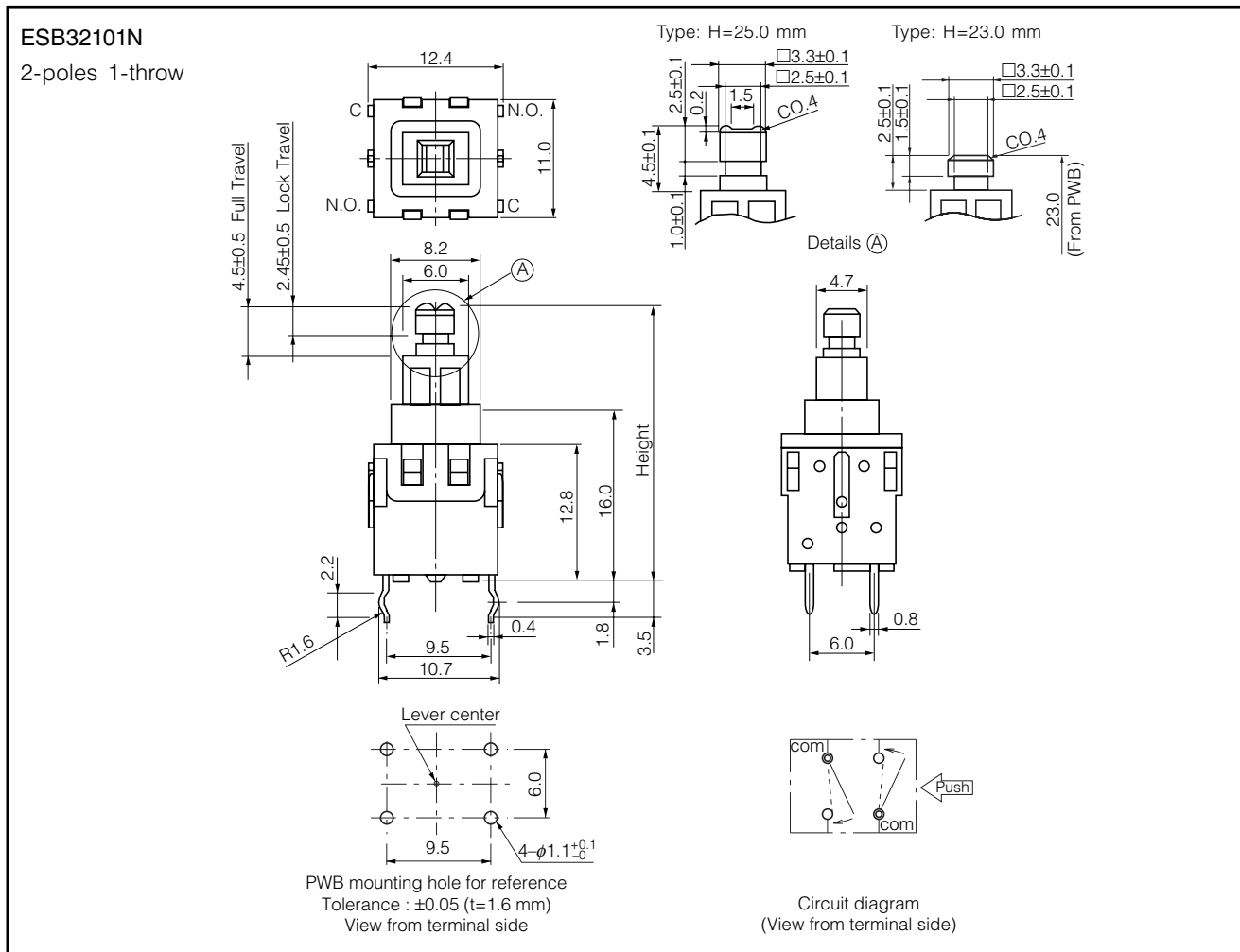
Standard Products

| Lever Height | Circuit Diagram | Operating Force | Formed Terminals | |
|--------------|-----------------|-----------------|------------------|----------|
| | | | PP | NL |
| 25.0 mm | N.O. | 3.5 N | ESB32101N | ESB32132 |
| | | 5.0 N | ESB32151 | ESB32152 |
| | N.C. | 3.5 N | ESB32231 | ESB32232 |
| | | 5.0 N | ESB32251 | - |
| 23.0 mm | N.O. | 3.5 N | ESB32331 | ESB32332 |
| | | 5.0 N | ESB32351 | - |
| | N.C. | 3.5 N | ESB32431 | - |
| | | 5.0 N | - | - |

Note: PP=Self-lock, NL=Non-lock



Dimensions in mm (not to scale)



Application Notes:

- Operating force should be applied at the center of the lever.

Design and specifications are each subject to change without notice. Ask factory for the current technical specifications before purchase and/or use. Should a safety concern arise regarding this product, please be sure to contact us immediately.