

PART NAME: KNOB SCALE: 2:1 DATE: 9/10/95 DR. BY RF

THIS DRAWING IS THE PROPERTY OF DAVIES MOLDING COMPANY, IS SUBMITTED SOLELY AS A DESIGN OR ENGINEERING PROJECT. WE ACCEPT NO RESPONSIBILITY WHATSOEVER FOR THE PRACTICAL APPLICATION OF THE PIECES MADE TO THIS DESIGN.

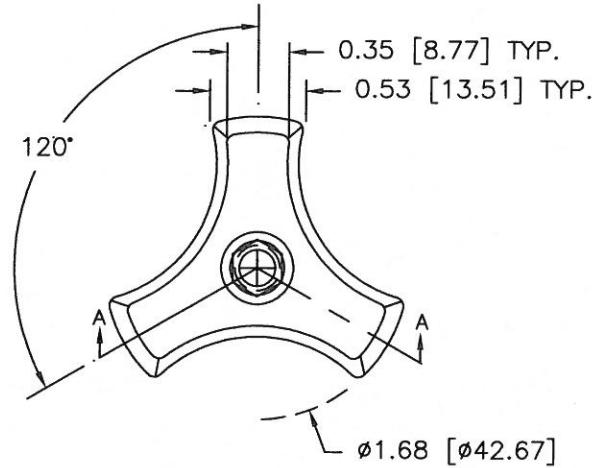


DESIGNERS & MANUFACTURERS OF KNOBS, HANDLES, CASES & CUSTOM PLASTIC COMPONENTS

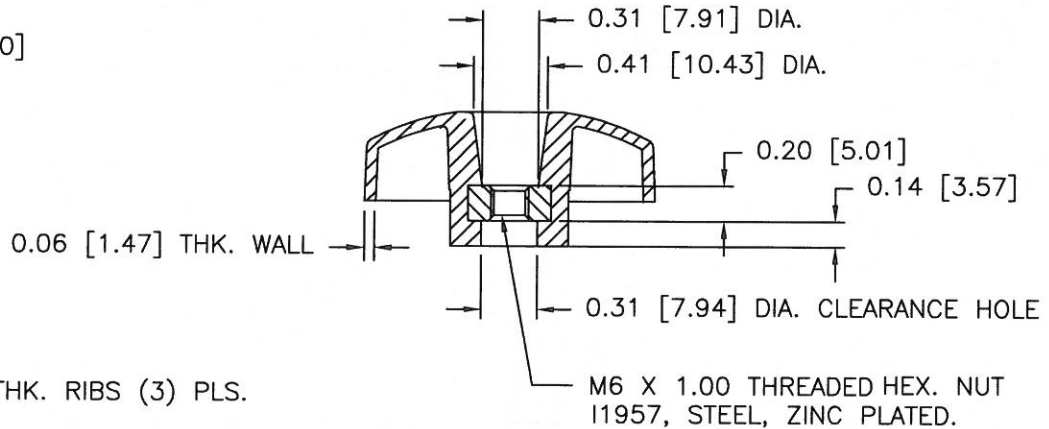
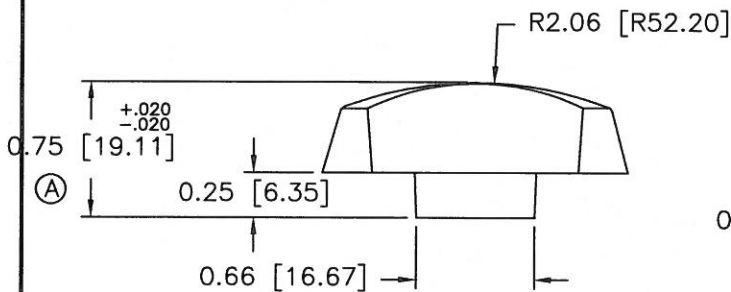
P/N 3038-B

M NO. (8) CAV.MUD

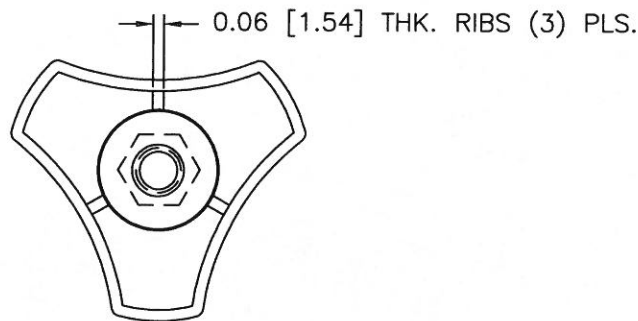
|             |        |
|-------------|--------|
| CAVITY      | 3038   |
| CORE        | 3038   |
| SLEEVE      | 3038   |
| PIN         | 3038   |
| BUSHING     | 3038-G |
| PIN BAR     | 3038   |
| CAVITY PLUG | 3038-B |
| INSERT      | 11957  |



Ⓑ  
Ⓔ



SECTION 'A-A'



Ⓓ MATERIAL: 20% Talc Filled Polypropylene  
COLOR: Black

|   |   |   |                                  |    |          |
|---|---|---|----------------------------------|----|----------|
| <p>TOLERANCES:<br/>UNLESS OTHERWISE SPECIFIED</p> <p>DECIMALS: X.XXX ± .005<br/>X.XX ± .015</p> <p>FRACTIONS ± 1/64</p> | <p>DO NOT SCALE<br/>DRAWING</p> <p>MM: X.XX ± 0.15MM<br/>X.X ± 0.4MM</p> <p>ANG. ± 1°</p> | E | ADDED BUSHING                    | ST | 7/09/01  |
|   |   | D | WAS HIPS                         | TL | 4/20/99  |
|   |   | C | MAT'L REVI WAS POLYPROPYLENE     | HD | 1/29/96  |
|   |   | B | WAS #3038-B PINS                 | HD | 1/10/96  |
|   |   | A | UPDATED DWG. W/ ADDED TOLERANCES | HD | 12/13/95 |
| CHANGES   |   |   |                                  |    |          |