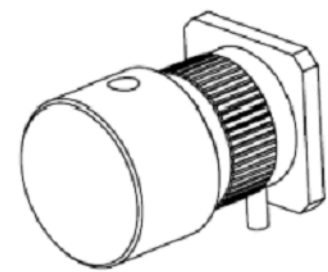
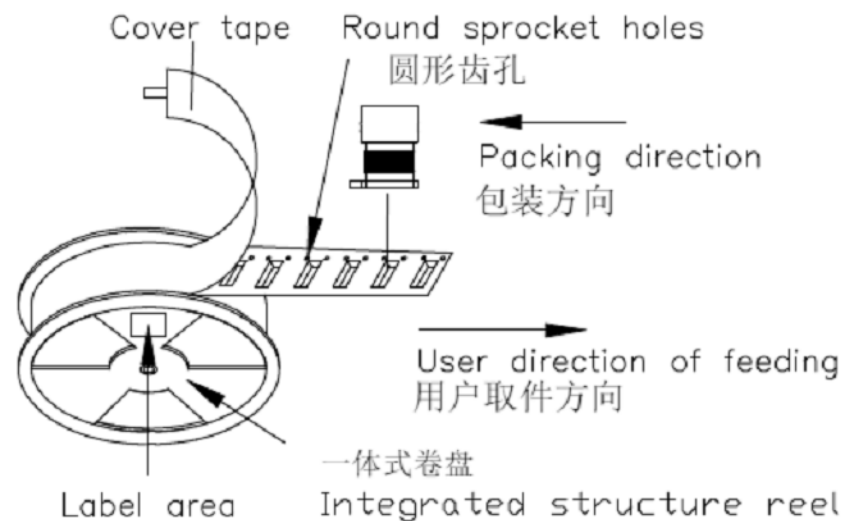


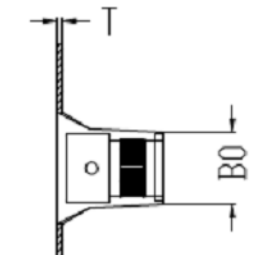
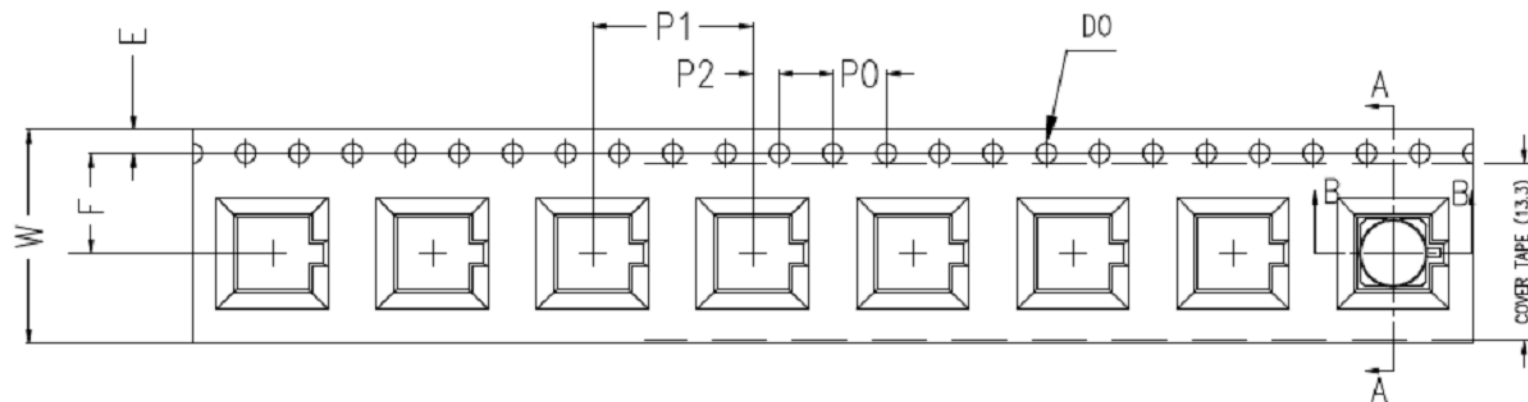
REV	DESCRIPTION	DATE	ECN	APPR
A	RELEASE TO MFG.	01-Mar-19	10642	EH



SMP-MSLD-PCR-1T



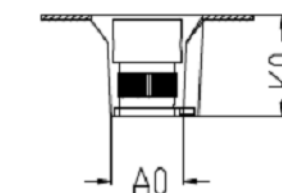
TAPE&REEL示意图



SECTION B-B



用户取件方向
User direction of feeding



SECTION A-A

1. 10 sprocket hole pitch cumulative tolerance $\pm 0.20\text{mm}$
2. Carrier camber not to exceed 1mm in 250mm.
3. A_0 and B_0 measured on a plane 0.3mm above the bottom of the pocket.
4. K_0 measured from a plane on the inside bottom of the pocket to the top surface of the carrier.
5. All dimensions meet EIA-481-D requirements.
6. Material: Black Conductive Polystyrene.
7. Thickness: $0.40 \pm 0.05 \text{ mm}$.
8. Packing length per 13" reel: 9.12Meters.
9. Component loader per 13" reel: 700PCS.

注:未注公差为 ± 0.10
NOTE: ALL TOLERANCES ARE: ± 0.10 , EXCEPT WHERE NOTED

ITEM	W	A_0	B_0	K_0	K_1	P_1	F	E	D_0	D_1	P_0	P_2	T
DIM	16.0 ± 0.3	5.4 ± 0.1	5.4 ± 0.1	7.55 ± 0.1		12.0 ± 0.1	7.5 ± 0.1	1.75 ± 0.1	$1.50^{+0.10}_{-0.00}$		4.00 ± 0.1	2.00 ± 0.1	0.4 ± 0.05

UNLESS OTHERWISE SPECIFIED, DIMENSIONS ARE IN METRIC AND TOLERANCES ARE: <math>< 0.5\text{mm}</math> $0.5 - 6\text{mm}$ $6 - 30\text{mm}$ $30 - 120\text{mm}$ ANGLES $\pm 0.05\text{mm}$ $\pm 0.1\text{mm}$ $\pm 0.2\text{mm}$ $\pm 0.3\text{mm}$ $\pm 1^\circ$	MATERIAL	DRAWN	DATE	TITLE	Amphenol RF www.amphenolrf.com
	SEE NOTES	M. ZHANG	01-Mar-19	SMP STR JACK PCB REAR MOUNT LIMITED DETENT (TAPE & REEL)	
NOTICE - These drawings, specifications, or other data (1) are, and remain the property of Amphenol corp. (2) must be returned upon request; and (3) are confidential and not to be disclosed to any person other than those to whom they are given by Amphenol Corp. the furnishing of these drawings, specifications, or other data by Amphenol Corp., or to any other person to anyone for any purpose is not to be regarded by implication or otherwise in any manner licensing, granting rights to permitting such holder or any other person to manufacture, use or sell any product, process or design, patented or otherwise, that may in any way be related to or disclosed by said drawings, specifications, or other data.	REFERENCE	ENGINEER	DATE	SCALE: 18.5:1.0 SHEET 3 OF 3	DRAWING NO. SMP-MSLD-PCR-IT
	EAR# 8531	VIJAY N M	01-Jan-19		ITEM NO. SMP-MSLD-PCR-IT
	REF: SAME AS SMP-MSLD-PCR-T EXCEPT KNURLED BODY	APPROVED	DATE		REV
CONFIGURATION LEVEL: In Work	S. HSIEH	05-Mar-19		A	
FINISH	CAD FILE				