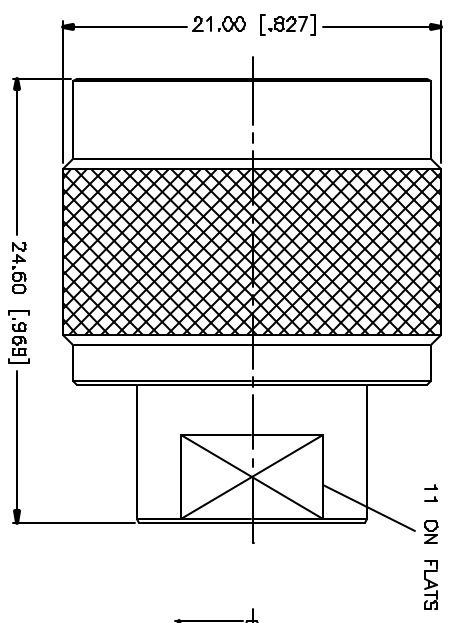
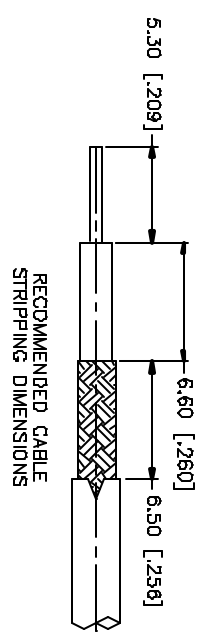
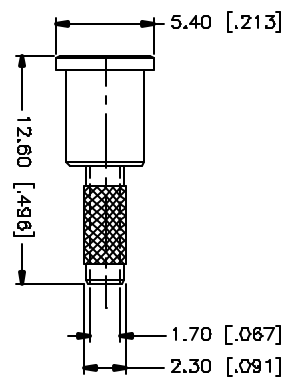
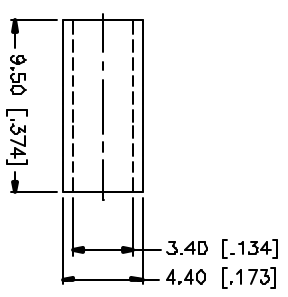
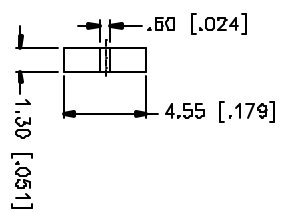
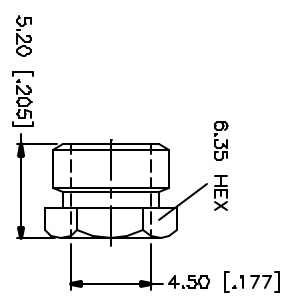
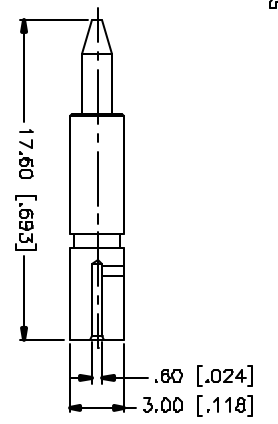


REV.	DATE	DESCRIPTION
A	08/30/00	MODIFY BARREL O.D. DIMENSION
B	05/22/05	UPDATE DRAWING FORMAT/ MODIFY PLATING SPEC



NOTE:  
USE .151 HEX CRIMP DIE TO TERMINATE FERRULE TO CABLE.  
- CONNEX TOOL 47-10160  
- IDEAL TOOL 36-489



QTY	FINISH	MATERIAL	DESCRIPTION
1	NEKOCOTE	BRASS	BODY
1	NATURAL	TEFLON	INSULATOR
1	COLD	BRASS	CONTACT PIN
1	NEKOCOTE	BRASS	BARREL
1	NEKOCOTE	BRASS	HEX NUT
1	NEKOCOTE	BRASS	FERRULE

APPROVALS	DATE
Q.R.S.	05/22/05

REV.	DATE	DESCRIPTION
A	08/30/00	MODIFY BARREL O.D. DIMENSION
B	05/22/05	UPDATE DRAWING FORMAT/ MODIFY PLATING SPEC

<p>UNLESS OTHERWISE SPECIFIED DIMENSIONS ARE IN INCHES AND DECIMAL FRACTIONS THEREOF. DIMENSIONS FOR MILLING ARE IN MILLIMETERS UNLESS OTHERWISE SPECIFIED.</p> <p>UNLESS OTHERWISE SPECIFIED DIMENSIONS FOR MILLING ARE:</p> <p>D.5 - .001mm ± 0.020mm  B - .001mm ± 0.040mm  30 - 120mm ± 0.600mm</p> <p>UNLESS OTHERWISE SPECIFIED DIMENSIONS FOR WELDING ARE:</p> <p>.020 - .315 = ± 0.007"  .315 - 1.180 = ± 0.015"  1.180 - 4.724 = ± 0.030"</p>	<p>DD NOT SCALE DRAWING</p>
--	-----------------------------

<p>Q&amp;D FILE</p> <p>C:/172/172171.DWG</p>	<p>DWG. NO.</p> <p>172171.DWG</p>	<p>REV.</p> <p>B</p>	<p>SIZE</p> <p>A</p>	<p>SCALE</p> <p>NA</p>
--	-----------------------------------	----------------------	----------------------	------------------------

<p>Amphenol Connex</p> <p>N CRIMP PLUG (FOR RG-316/U DOUBLE BRAID CABLE)</p> <p>172171</p>
--