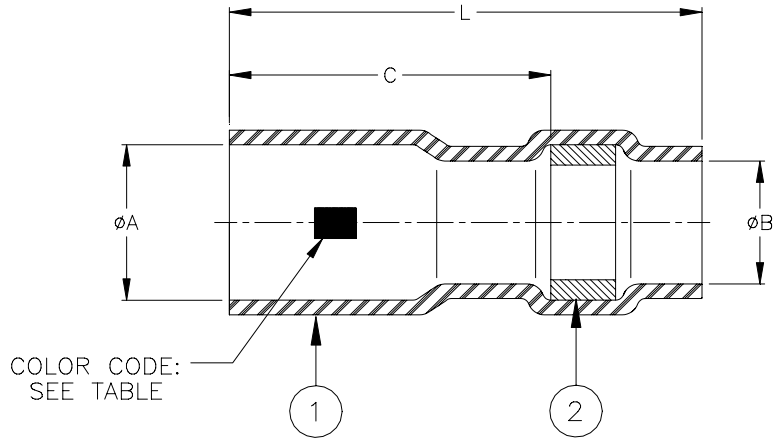


SPECIFICATION CONTROL DRAWING



Product Revision		Product Dimensions				Wire Accomodation*		Color Code
Product Name		L ± 0.50 (L ± 0.020)	C min	ϕA max	ϕB min	One Wire (AWG)	Two Wires (AWG)	
D-141-0211	D	5.10 (0.200)	2.30 (0.090)	1.90 (0.075)	0.89 (0.035)	26, 28, 30	30	Red
D-141-0212	D	5.10 (0.200)	2.30 (0.090)	2.10 (0.083)	1.07 (0.042)	22, 24	26, 28	Blue

* Variations in pin/wire geometry may require use of a different size sleeve in some instances. Consult Raychem for specific recommendations.

MATERIALS

1. INSULATION SLEEVE: Heat shrinkable, transparent blue, radiation cross-linked polyvinylidene fluoride.
2. SOLDER PREFORM WITH FLUX:
SOLDER: TYPE Sn63 per ANSI J-STD-006.
FLUX: TYPE ROL1 per ANSI J-STD-004.

APPLICATION

1. These parts are designed to attach wires having tin or silver plated stranded conductors to 0.60 (0.025) square wire wrapping posts.
*Wire Accomodation: See table.
2. Sleeve is to applied using the following Raychem tools:
AD-1549 Installation tool and the RH-3900 Resistance Heater
3. For installation instructions, see Raychem Procedure RCPS-200-32.

 307 Constitution Drive Menlo Park, CA 94025, USA		Wire and Harnessing Products		TITLE : SOLDERSLEEVE TERMINATOR FOR 0.60 x 0.60 (0.025 x 0.025) WIRE WRAPPING POSTS					
UNLESS OTHERWISE SPECIFIED DIMENSIONS ARE IN MILLIMETERS. INCHES DIMENSIONS ARE BETWEEN BRACKETS.				DOCUMENT NO.: D-141-0211/-0212					
TOLERANCES: 0.00 N/A 0.0 N/A 0 N/A		ANGLES: N/A ROUGHNESS IN MICRON		Tyco Electronics reserves the right to amend this drawing at any time. Users should evaluate the suitability of the product for their application.		DCR NUMBER: D010074		REPLACES: N/A	
DRAWN BY: M. FORONDA		DATE: 04-Apr.-01		PROD. REV. SEE TABLE		DOC ISSUE: 1		SCALE: None	
						SIZE: A		SHEET: 1 of 1	

If this document is printed it becomes uncontrolled. Check for the latest revision.