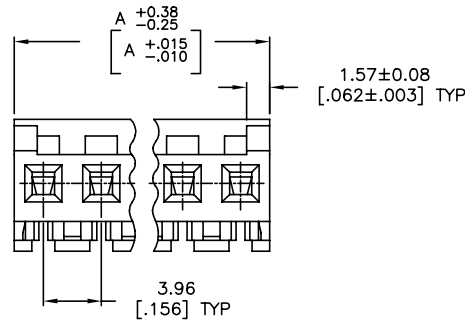
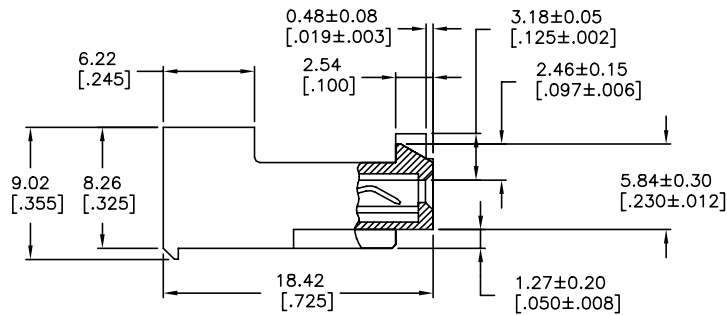
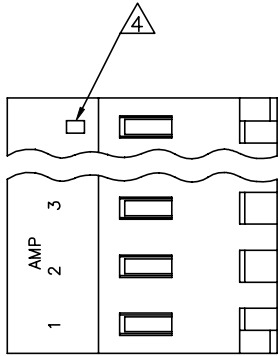


THIS DRAWING IS UNPUBLISHED. RELEASED FOR PUBLICATION
 © COPYRIGHT - By - TE CONNECTIVITY ALL RIGHTS RESERVED.

LOC	DIST	REVISIONS					
CM	00	P	LTN	DESCRIPTION	DATE	DWN	APVD
		H		REVISED PER ECR-20-000822	28MAY2020	PC	SW



1 MATERIAL: CONNECTOR - NYLON UL94V-2 (RED) .
 CONTACTS - 0.30[.012] THICK COPPER ALLOY
 0.00076[.000030] GOLD THK OR 0.00008[.000003] MIN THK
 GOLD FLASH OVER 0.00068[.000027] THK PALLADIUM NICKEL,
 PER TE CONNECTIVITY'S DISCRETION. IN CONTACT
 AREA WITH MATTE TIN FOR 644662-2
 THRU 1-644662-4, MATTE WHISKER MITIGATED
 TIN FOR 3-644662-2 THRU 4-644662-4
 OVER NICKEL UNDERPLATE.

2 CONTACTS ACCEPT 22 AWG WIRE WITH 2.41[.095] MAX
 INSULATION DIAMETER.

3 CONTACTS MUST ACCEPT 1.14±0.03[.045±.001] SQUARE
 POST AND REMAIN LOCKED IN POSITION.

4 IDENTIFICATION NUMBER FOR LAST CIRCUIT MAY
 NOT APPEAR ON ALL ASSEMBLIES.

5 DIMENSIONS IN BRACKETS ARE IN INCHES.

6 HOUSING FEATURES ARE: CLOSED END WITH LOCKING RAMP
 AND POLARIZING TAB

7 OBSOLETE PARTS: OBSOLETE CIS STREAMLINING PER D.RENAUD/D.SINISI

	55.47	[2.184]	14	4-644662-4	
	47.55	[1.872]	12	4-644662-2	
	43.59	[1.716]	11	4-644662-1	
	39.62	[1.560]	10	4-644662-0	
	35.66	[1.404]	9	3-644662-9	
	31.70	[1.248]	8	3-644662-8	
	27.74	[1.092]	7	3-644662-7	
	23.77	[.936]	6	3-644662-6	
	19.81	[.780]	5	3-644662-5	
	15.85	[.624]	4	3-644662-4	
	11.89	[.468]	3	3-644662-3	
	7.92	[.312]	2	3-644662-2	
△	SUPERSEDED BY 4-644662-4	55.47	[2.184]	14	1-644662-4
△	SUPERSEDED BY 4-644662-2	47.55	[1.872]	12	1-644662-2
△	SUPERSEDED BY 4-644662-1	43.59	[1.716]	11	1-644662-1
	OBSOLETE	39.62	[1.560]	10	1-644662-0
	OBSOLETE	35.66	[1.404]	9	644662-9
	OBSOLETE	31.70	[1.248]	8	644662-8
△	SUPERSEDED BY 3-644662-7	27.74	[1.092]	7	644662-7
	OBSOLETE	23.77	[.936]	6	644662-6
	OBSOLETE	19.81	[.780]	5	644662-5
	OBSOLETE	15.85	[.624]	4	644662-4
	OBSOLETE	11.89	[.468]	3	644662-3
	OBSOLETE	7.92	[.312]	2	644662-2
	DIM A		NO OF CIRCUITS	PART NO	

THIS DRAWING IS A CONTROLLED DOCUMENT.		DWN N. GANNON	03 JUL 91	TE Connectivity	
DIMENSIONS: mm [INCHES]		CHK R. SWING	03 JUL 91	MTA-156 CONNECTOR ASSEMBLY, 22 AWG, STANDARD	
TOLERANCES UNLESS OTHERWISE SPECIFIED:		APVD G. MILLER	03 JUL 91	NAME	
0 PLC ± -		PRODUCT SPEC		108-1051	
1 PLC ± -		APPLICATION SPEC		114-1020	
2 PLC ± 0.13 [0.005]		SIZE		A2	
3 PLC ± -		CAGE CODE		00779	
4 PLC ± -		DRAWING NO		C=644662	
ANGLES ± -		RESTRICTED TO		-	
FINISH		WEIGHT		-	
MATERIAL		CUSTOMER DRAWING		SCALE 4:1 SHEET 1 of 1 REV H	