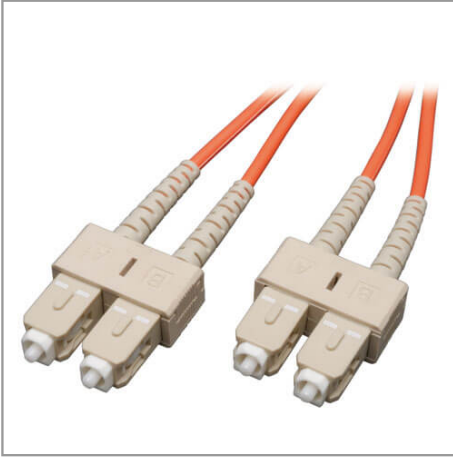


Duplex Multimode 50/125 Fiber Patch Cable (SC/SC), 9M (30 ft.)

MODEL NUMBER: **N506-09M**



Highlights

- Premium PVC 50/125 multimode patch cables
- Attenuation loss meets or exceeds the latest industry standards
- Higher bandwidth, optimized for gigabit and 10Gbps networks
- Backward compatible with 62.5 micron fiber
- Built-in headroom for future applications

System Requirements

- Any fiber optic hardware or NIC card requiring multimode Duplex cable with SC/SC connectors

Package Includes

- 9M Duplex MMF Cable SC/SC 50/125 Fiber

Description

This multimode duplex Fibre Channel SC/SC Ethernet cable is manufactured from 50/125 zipcord fiber. The cable has SC connectors on each end, a PVC jacket and is FDDI and OFNR rated. 50/125 Duplex multimode fiber is most commonly used in Fibre Channel applications. It is backward compatible with 62.5 micron fiber and built-in headroom for future applications. The cable provides higher bandwidth optimized for Gigabit and 10 Gbps networks as well. Also available in 1, 2, 3, 5, 15, 30 and 50 meter lengths. Search "N506-" to bring up all lengths. Also search "N516-" for SC-LC cables, and "N520-" for LC-LC cables.

Features

- Constructed with 50/125 micron cable
- Length - 9M
- Use on fiber and fibre channel installations
- SC male to SC male connectors
- Higher bandwidth optimized for gigabit and 10Gbps networks
- Backward compatible with 62.5 micron fiber
- Built-in headroom for future applications

Specifications

OVERVIEW	
UPC Code	037332138149
Technology	Multimode
Optical Mode	OM2
PHYSICAL	
Cable Jacket Color	Orange

Connector Color	Beige
Cable Jacket Material	LSZH
Cable Jacket Rating	OFNR
Clad Diameter (microns)	125
Core Diameter (microns)	50
Number of Fibers	2
Cable Length (ft.)	29.5
Cable Length (m)	8.99
Cable Length (in.)	354.3
Minimum Bend Radius	20 mm (Dynamic); 10 mm (Static)
Shipping Dimensions (hwd / in.)	9.00 x 7.00 x 0.80
Shipping Dimensions (hwd / cm)	22.86 x 17.78 x 2.03
Shipping Weight (lbs.)	0.25
Shipping Weight (kg)	0.11
Fiber Cable Length	9M (29.5 ft)
ENVIRONMENTAL	
Operating Temperature Range	-4° to 140°F (-20° to 60°C)
Storage Temperature Range	-4° to 140°F (-20° to 60°C)
Operating Humidity Range	5% to 85% RH, Non-Condensing
Storage Humidity Range	35% to 65% RH, Non-Condensing
COMMUNICATIONS	
Network Compatibility	1 Gbps (Gigabit); 10 Gbps
Attenuation @ 850NM	3.0 dB/km
Insertion Loss	0.20 dB
CONNECTIONS	
Side A - Connector 1	SC DUPLEX (MALE)
Side B - Connector 1	SC DUPLEX (MALE)
Endface Polish	PC
FEATURES & SPECIFICATIONS	
Push/Pull Tabs	No
Breakout	No
Trunk	No

STANDARDS & COMPLIANCE	
Product Compliance	RoHS; REACH
WARRANTY & SUPPORT	
Product Warranty Period (Worldwide)	Lifetime limited warranty