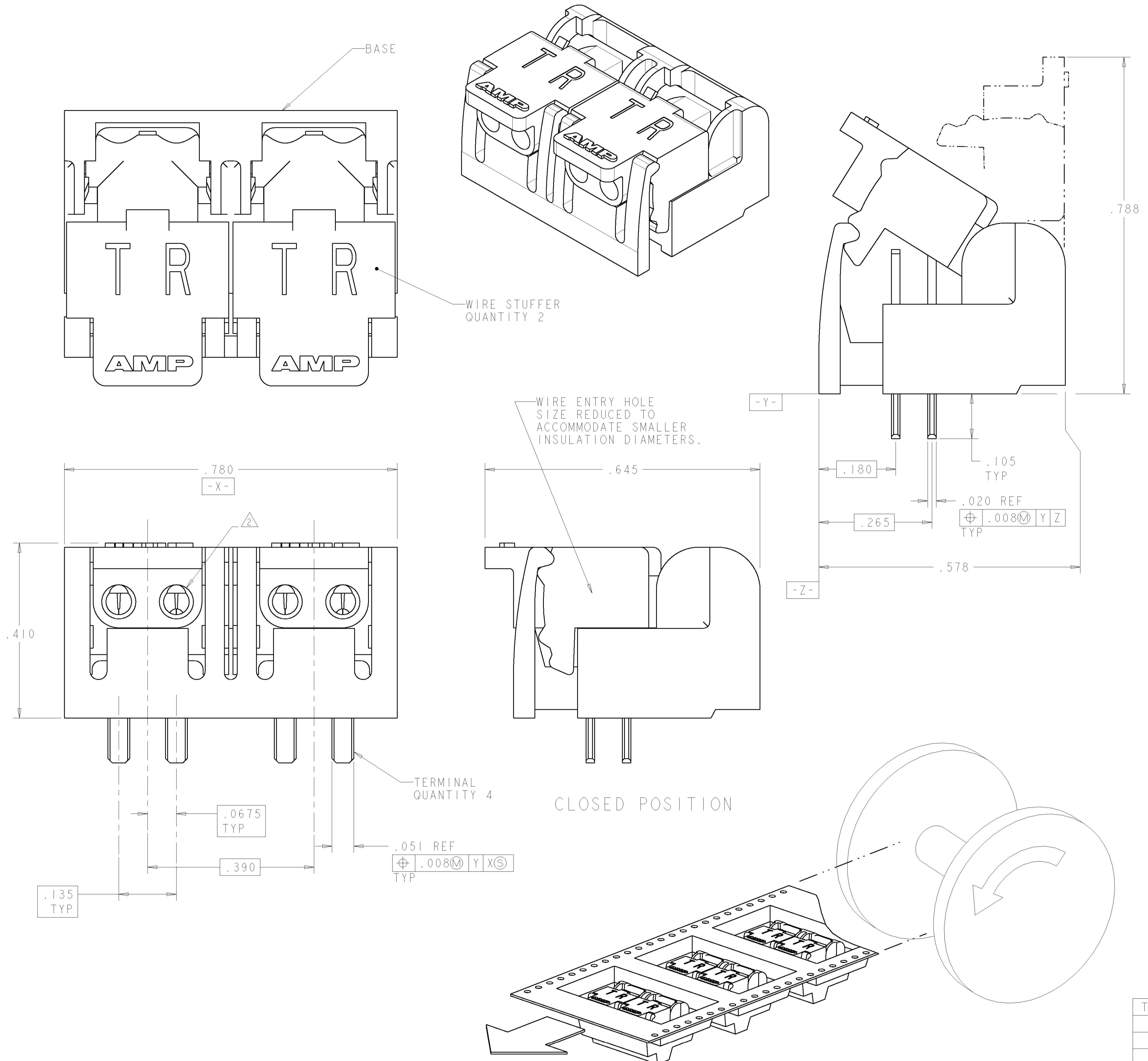
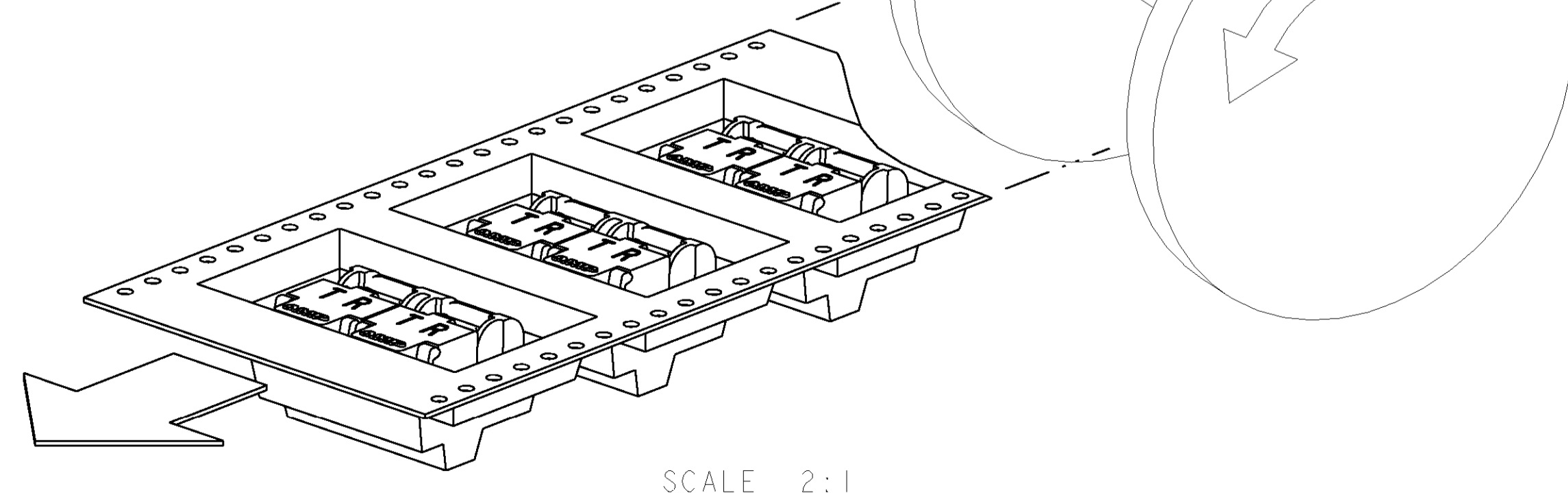
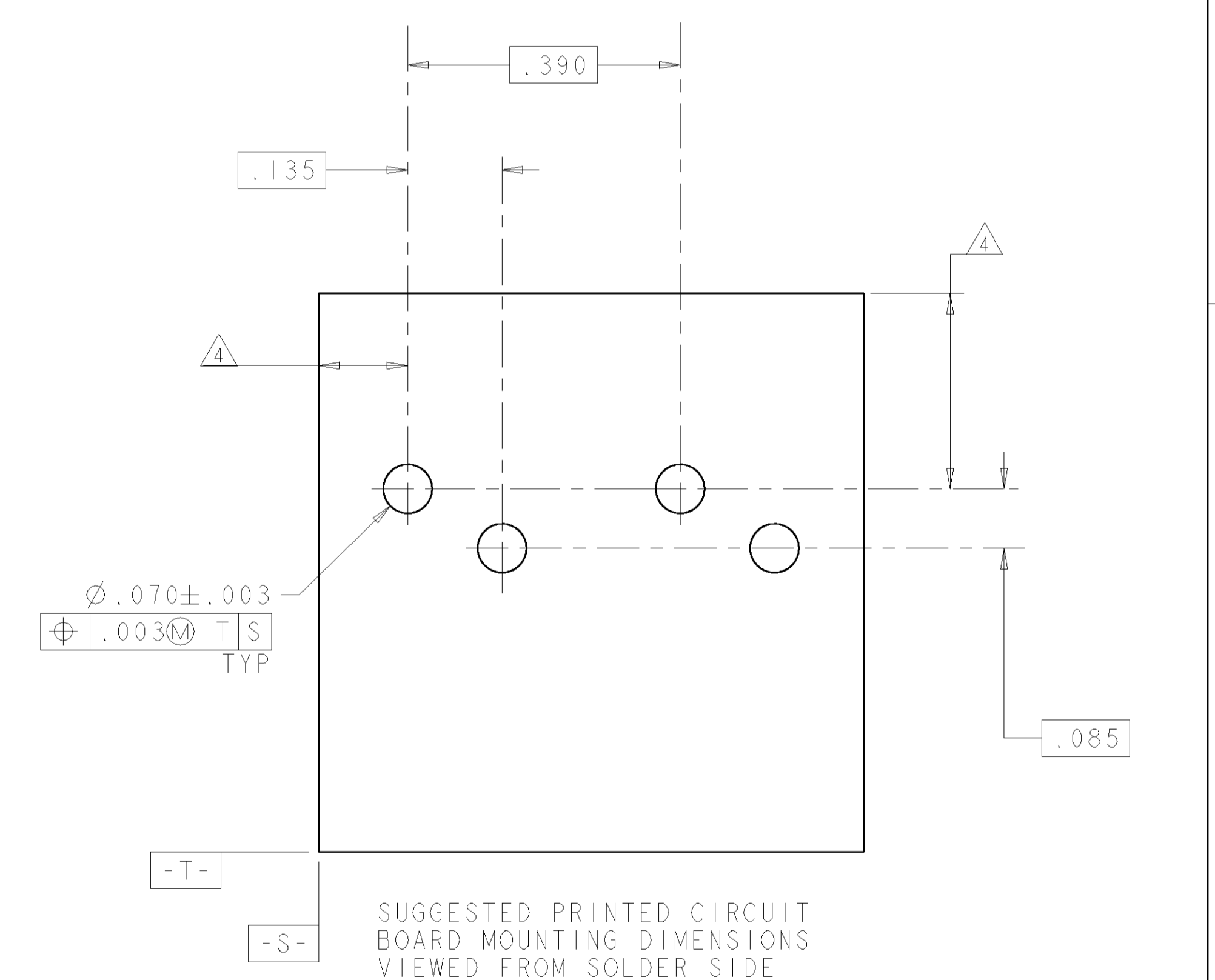


LOC	DIST	REVISIONS					
GP	0	F	LTR	DESCRIPTION	DATE	DWN	APPD
		A		REV: EC OUIIC-0007-01	22JAN01	JA	TW
		B		REVISED PER EC 0S15-0450-02	21JAN2003	DLD	RPM
		C		REVISED PER 0S15-0324-03	09DEC03	JB	CF



- 1 MATERIAL: BASE - HIGH TEMPERATURE MOLDING COMPOUND, BLACK. WIRE STUFFER: - HIGH TEMPERATURE MOLDING COMPOUND. TERMINAL - COPPER ALLOY, PLATED WITH 3.81µm MINIMUM THICK. TIN OVER 1.27µm MINIMUM THICK NICKEL UNDERPLATE.
- 2 EACH WIRE ENTRY HOLE ACCEPTS ONE UNSTRIPPED SOLID COPPER 22-26 AWG WIRE WITH WIRE INSULATION DIAMETER RANGE FROM .040 THROUGH .030. OTHER WIRE SIZES AND TYPES SHALL BE SUBMITTED TO AMP ENGINEERS FOR APPLICATION APPROVAL.
- 3. SOLDER TABS PROVIDED FOR PERMANENT BOARD MOUNTING.
- 4 LOCATION OF HOLE PATTERN DETERMINED BASED ON CUSTOMER REQUIREMENTS.



SCALE 2:1

TAPE & REEL	GREEN	GREEN	TAN	1-1339395-1
TRAY	RED	GREEN	TAN	1339395-1
PACKAGING	R	T	WIRE STUFFER	PART NUMBER

<small>THIS DRAWING IS UNPUBLISHED. RELEASED FOR PUBLICATION. ALL RIGHTS RESERVED. ALL DIMENSIONS ARE IN INCHES UNLESS OTHERWISE SPECIFIED. DIMENSIONS SHOWN IN PARENTHESES ARE FOR INFORMATION ONLY. DIMENSIONS SHOWN IN PARENTHESES ARE FOR INFORMATION ONLY. DIMENSIONS SHOWN IN PARENTHESES ARE FOR INFORMATION ONLY.</small>		DWN: J. AHERON 03NOV00 CDR: T. WOJTACKI 03NOV00	<b>AMP</b> AMP Incorporated Harrisburg, PA 17105-3608
DIMENSIONS: INCHES TOLERANCES UNLESS OTHERWISE SPECIFIED: 0 PLC ±.01 1 PLC ±.01 2 PLC ±.01 3 PLC ±.005 4 PLC ±.01 ANGLES ±.01	PRODUCT SPEC: ASSEMBLY, DOUBLE PAIR, SINGLE ENTRY, PIVOT II CONNECTOR APPLICATION SPEC:	NAME: ASSEMBLY, DOUBLE PAIR, SINGLE ENTRY, PIVOT II CONNECTOR SIZE: A1 CAGE CODE: 00779 DRAWING NO: 1339395	CUSTOMER DRAWING SCALE: 6:1 SHEET: 1 OF 1 REV: C