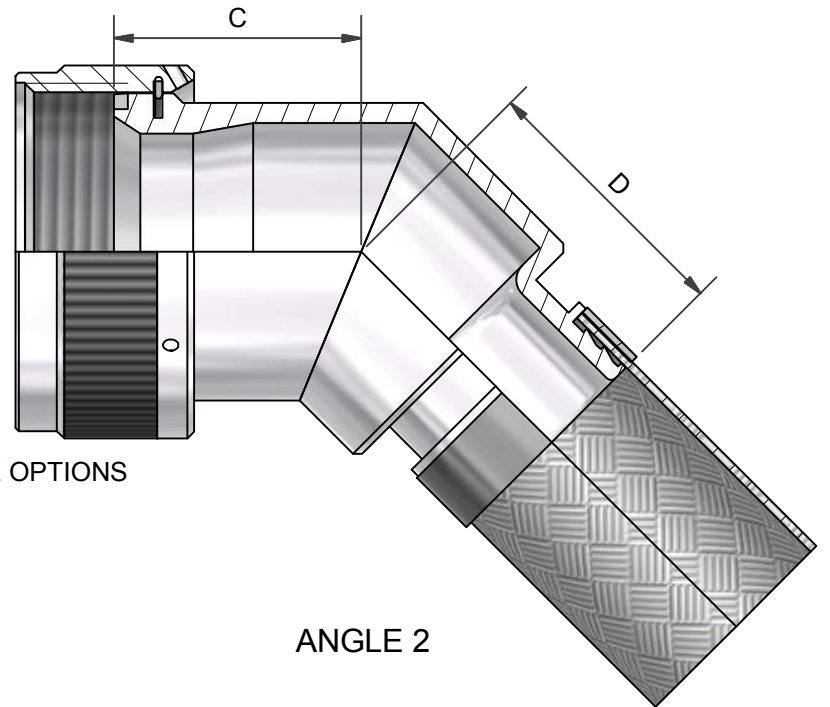
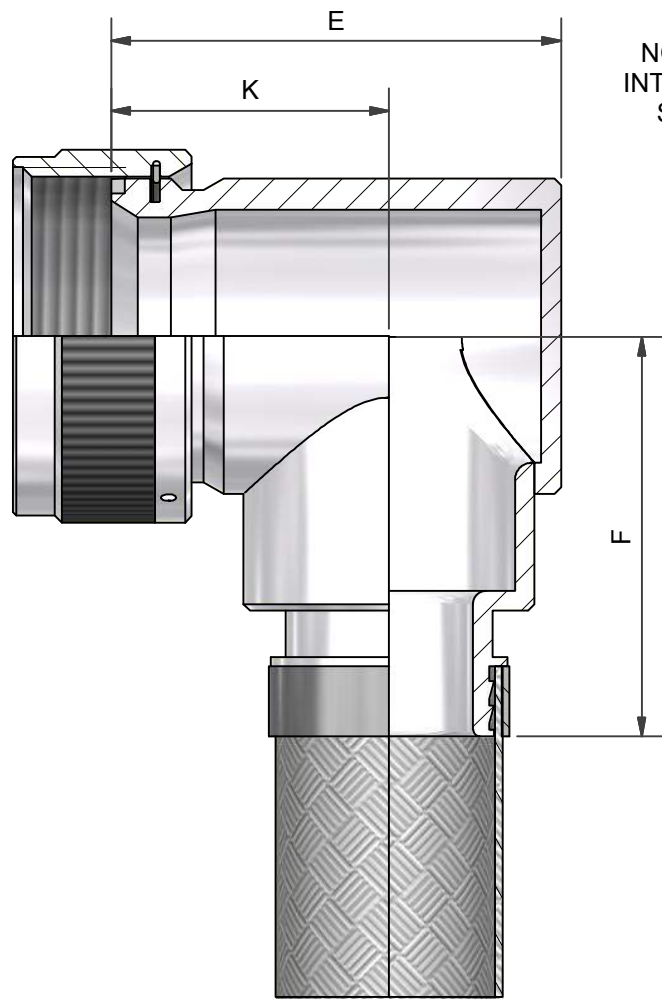


ANGLE 1

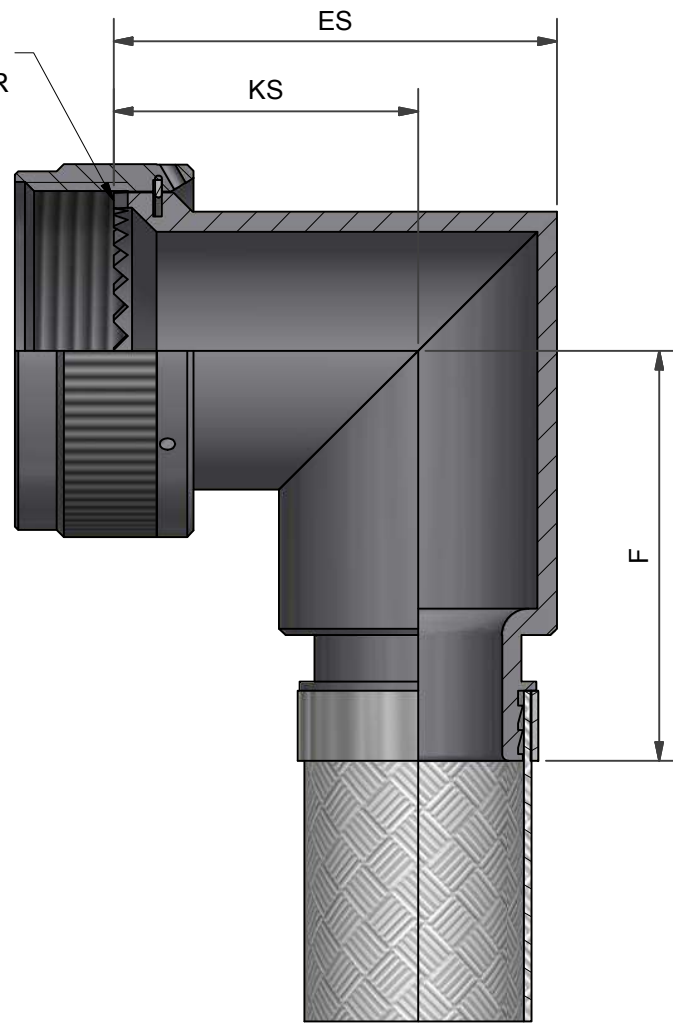


ANGLE 2



ANGLE 3
ALUMINIUM ALLOY

NOTE ALTERNATIVE
INTERFACE STYLE FOR
STAINLESS STEEL



ANGLE 3
STAINLESS STEEL

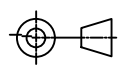

DRAWN		DATE		 3RD ANGLE PROJECTION NOT TO SCALE	PART NUMBER:			 70A SERIES			
K.WINCZURA		10/10/2016			TITLE:						
DESIGN APPROVAL		DATE		UNLESS OTHERWISE SPECIFIED ALL DIMENSIONS IN MILLIMETRES GENERAL TOL LINEAR +/-0,25MM ANGULAR +/- 1°	ASSY USED ON: MIL-CTL-26482 SERIES II/MIL-DTL-83723			 BRAID TAIL BACKSHELL			
K.SHEPPARD		31/01/2017			SERIES I & III						
DOC TYPE	Customer Drawing			MATERIAL SEE PART NUMBER BREAKDOWN FINISH SEE PART NUMBER BREAKDOWN	THIS DRAWING IS COPYRIGHT AND THE PROPERTY OF POLAMCO LTD IT MUST NOT BE COPIED, USED FOR MANUFACTURE OR OTHERWISE DISCLOSED WITHOUT PRIOR WRITTEN CONSENT OF THE COMPANY.			POLAMCO LTD, WESTON LOCK, LOWER BRISTOL ROAD BATH BA2 1EP		SHT	DRAWING NO:
ISSUE/REV	CA	DCR	6361		1		P11203				
NCAGE CODE U5792		WEIGHT N/A									

TABLE 1

SHELL SIZE	A THREAD	ØB MAX	ØB2 MAX	ØT MIN	C ±0,5	D MAX	E MAX	F MAX	K ±0,5	L ±0,5	ES MAX	KS ±0,5
03	9/16-24 UNEF	17,0	19,4	6,7	16,8	26,6	26,6	24,3	17,6	25,5	26,8	16,0
08	1/2-20 UNF	15,6	18,0	6,5	16,6	16,9	24,7	24,3	17,5	25,5	22,9	17,5
10	5/8-24 UNEF	18,6	21,0	9,2	16,8	17,2	26,7	26,0	17,8	25,5	25,5	18,8
12	3/4-20 UNEF	21,7	25,0	12,7	17,3	17,6	29,2	27,0	18,7	25,5	28,8	20,4
14	7/8-20 UNEF	24,9	28,0	14,6	18,1	18,4	30,7	28,6	19,0	25,5	30,9	21,5
16	1-20 UNEF	28,2	31,0	17,7	19,0	19,2	34,2	30,7	21,0	25,5	34,0	23,0
18	1 1/16-18 UNEF	30,9	34,0	19,7	19,2	19,5	37,2	30,7	23,5	25,5	36,0	24,0
20	1 3/16-18 UNEF	34,1	36,5	22,9	20,1	20,3	42,2	32,5	27,0	25,5	39,3	25,7
22	1 5/16-18 UNEF	37,3	39,8	26,1	20,3	20,6	44,2	34,1	27,0	25,5	42,4	27,2
24	1 7/16-18 UNEF	40,4	42,0	29,0	21,8	22,0	45,2	35,6	27,0	25,5	45,3	28,7
28	1 3/4-18 UNS	50,0	49,8	34,9	23,3	22,5	54,4	39,2	31,4	36,0	51,2	31,6
32	2-18 UNS	56,3	57,2	41,2	25,0	24,2	62,5	42,8	36,5	40,0	60,5	33,5
36	2 1/4-16UN	62,7	63,6	46,7	26,2	25,4	67,4	47,6	38,0	45,0	66,0	36,0
40	2 1/2-16UN	69,0	70,0	52,1	28,6	26,6	73,4	49,8	42,0	50,5	72,5	39,3
44	2 3/4-16UN	75,4	75,4	58,6	30,1	28,3	79,7	53,0	46,0	50,5	76,0	40,8
48	3-16 UN	81,7	81,7	65,0	31,3	29,5	86,0	56,1	50,0	50,5	76,0	40,8
61	1 1/2-18 UNEF	42,0	43,6	30,1	22,1	21,9	48,0	37,1	28,0	28,0	48,8	27,0

TABLE 2

ENTRY SIZE	ØG MIN	ØH MAX
03	4,77	13,60
04	6,35	13,60
05	7,92	13,60
06	9,52	18,40
07	11,12	18,40
08	12,70	18,40
09	14,27	18,40
10	15,87	24,70
11	17,47	24,70
12	19,05	24,70
13	20,62	24,70
14	22,23	31,10
15	23,82	31,10
16	25,40	31,10
17	26,98	33,70
18	28,60	33,70
19*	30,20	36,90
20**	31,80	42,50
21**	33,34	42,50
22**	35,00	42,50
24*	38,10	42,50

TABLE 3

CODE	MATERIAL / FINISH
1-C	ALUMINIUM / ELECTROLESS NICKEL
1-B	ALUMINIUM / CADMIUM OLIVE DRAB OVER ELECTROLESS NICKEL
1-ZB	ALUMINIUM / ZINC COBALT OLIVE DRAB OVER ELECTROLESS NICKEL
1-ZK	ALUMINIUM / ZINC COBALT BLACK OVER ELECTROLESS NICKEL
1-ZN	ALUMINIUM / ZINC NICKEL BLACK PASSIVATE OVER ELECTROLESS NICKEL
4-J	STAINLESS STEEL / PASSIVATE

SEE SS0076 FOR FULL RANGE OF FINISH OPTIONS

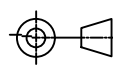


TABLE 4

SUFFIX	MODIFICATION OPTIONS
-DB	DOUBLE BRAID
-N	NICKEL PLATED BRAID
-12	NON-STANDARD BRAID LENGTH (IN INCHES)

* - NOT AVAILABLE IN DB MODIFICATION
 ** - ADD 2,10 TO F MAX FOR DB MODIFICATION

70A1-16-08-1-C

SERIES _____
 CONNECTOR INTERFACE _____
 ANGLE _____
 SHELL SIZE (TABLE 1) _____
 ENTRY SIZE (TABLE 2) _____
 MATERIAL AND FINISH (TABLE 3) _____
 BRAID TAIL MODIFICATION (SEE TABLE 4) _____
 OMIT FOR STANDARD (6 INCH SINGLE LAYER TINNED COPPER)

DRAWN		DATE		 3RD ANGLE PROJECTION NOT TO SCALE	PART NUMBER:			 70A SERIES								
K.WINCZURA		10/10/2016			TITLE:						BRAID TAIL BACKSHELL					
DESIGN APPROVAL		DATE		UNLESS OTHERWISE SPECIFIED ALL DIMENSIONS IN MILLIMETRES GENERAL TOL LINEAR +/-0,25MM ANGULAR +/- 1°				ASSY USED ON: MIL-CTL-26482 SERIES II/MIL-DTL-83723 SERIES I & III						 POLAMCO LTD, WESTON LOCK, LOWER BRISTOL ROAD BATH BA2 1EP		
K.SHEPPARD		31/01/2017			MATERIAL SEE PART NUMBER BREAKDOWN FINISH SEE PART NUMBER BREAKDOWN						THIS DRAWING IS COPYRIGHT AND THE PROPERTY OF POLAMCO LTD IT MUST NOT BE COPIED, USED FOR MANUFACTURE OR OTHERWISE DISCLOSED WITHOUT PRIOR WRITTEN CONSENT OF THE COMPANY.					
DOC TYPE	Customer Drawing															
ISSUE/REV	CA	DCR	6361	SHT			2									
NCAGE CODE U5792		WEIGHT N/A								DRAWING NO:			P11203			