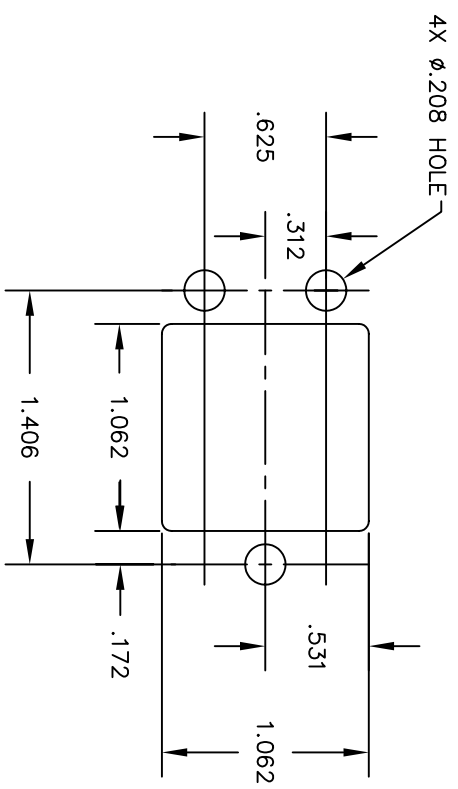
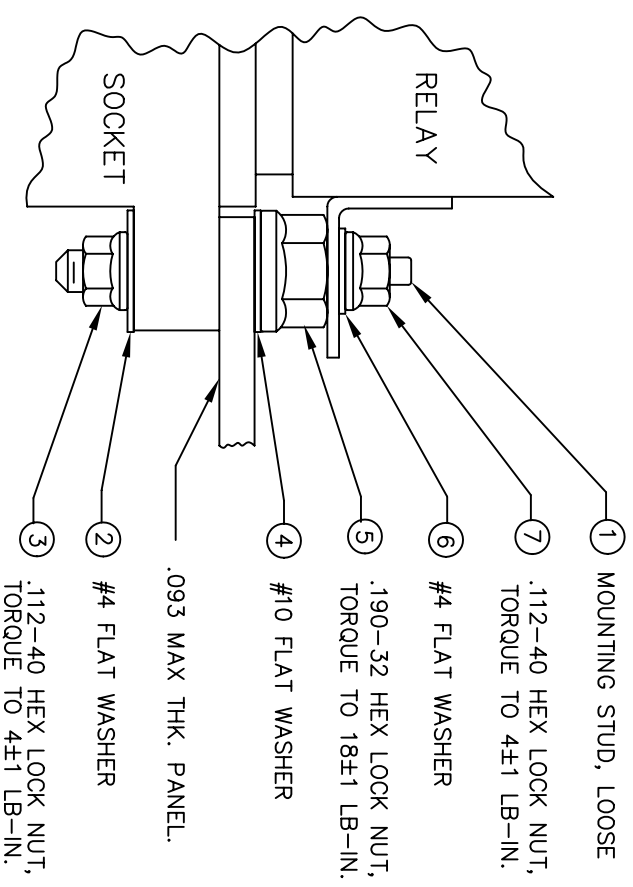


REV	ECN	APP'D
-	5689	

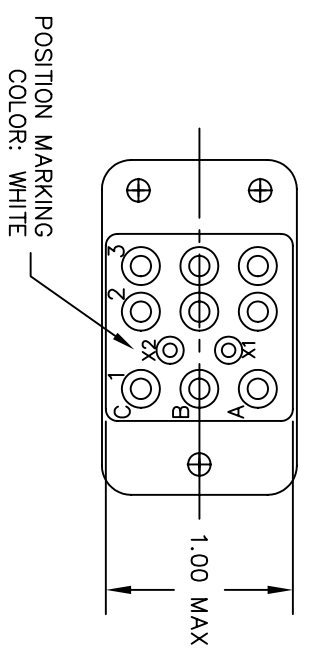
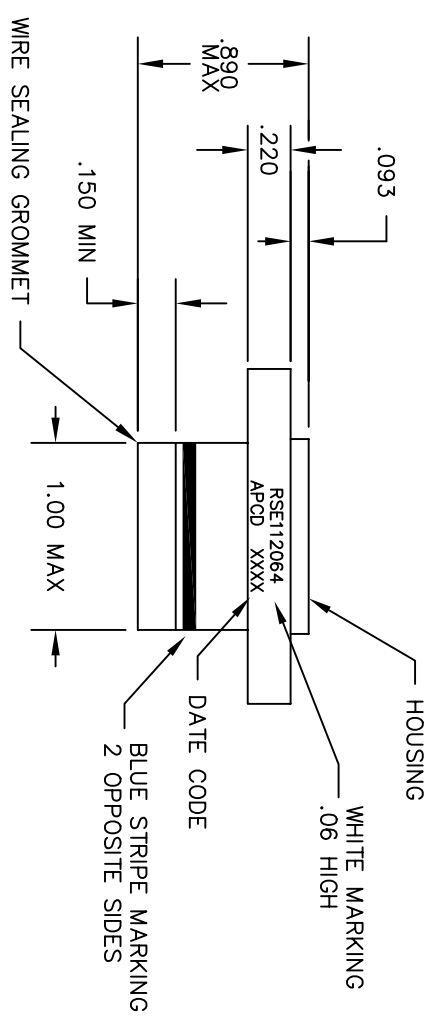
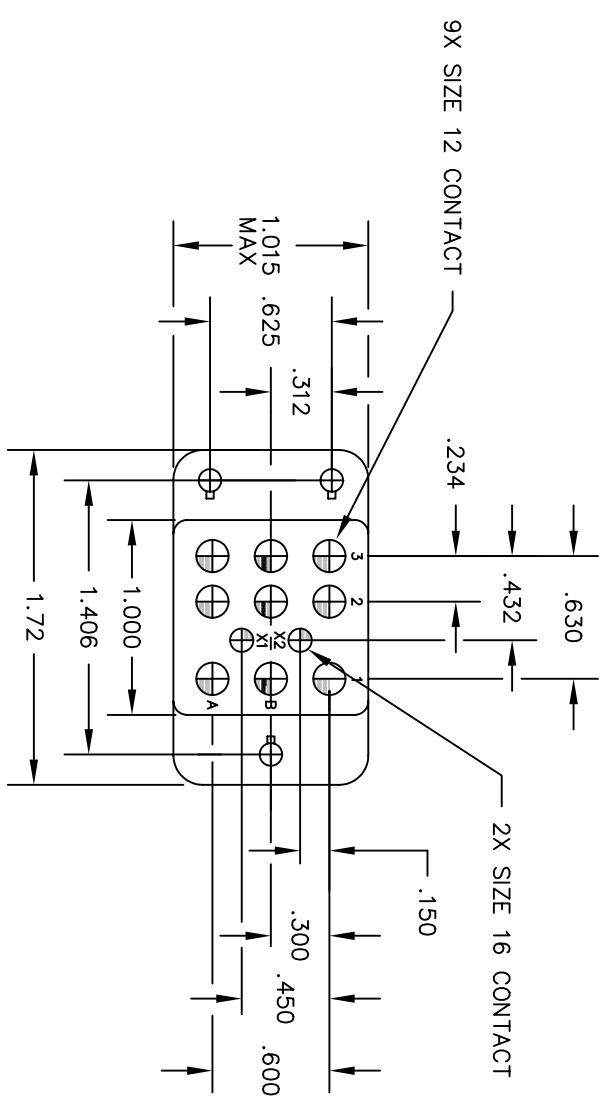


RECOMMENDED MOUNTING  
PANEL HOLE



INSTALLATION SEQUENCE BY ITEM NUMBER  
TYP 4 PLACES

- ① MOUNTING STUD, LOOSE
- ⑦ .112-40 HEX LOCK NUT,  
TORQUE TO 4±1 LB-IN.
- ⑥ #4 FLAT WASHER
- ⑤ .190-32 HEX LOCK NUT,  
TORQUE TO 18±1 LB-IN.
- ④ #10 FLAT WASHER
- ④ .093 MAX THK. PANEL.
- ② #4 FLAT WASHER
- ③ .112-40 HEX LOCK NUT,  
TORQUE TO 4±1 LB-IN.



NOTES:

1. CONFORMS TO PERFORMANCE REQUIREMENTS OF MIL-PRF-12883
2. MATERIALS:
  - A. HOUSING - POLYETHERIMIDE, COLOR: BLUE-GREEN.
  - B. GROMMET - SILICONE ELASTOMER, COLOR: RED.
3. SOCKET CONTACTS CONFORM TO PERFORMANCE REQUIREMENTS OF MIL-C-39029, GOLD OVER NICKEL PLATE.
4. OPERATING TEMPERATURE: +125°C/-65°C CONTINUOUS.
5. CONTACT INSTALLATION TOOLS:
 

#12 CONTACT CRIMP TOOL:	M22520/1-01	#16 CONTACT POSITIONER:	M22520/1-01
	M22520/1-02		M22520/1-02
	M81969/14-04		M81969/14-03.

**Amphenol Pcd**  
SPECIFICATION DRAWING

ENGR R. SWAINE 9/20/05

DIMENSIONS	TOLERANCES	PROJECTION
ANSI Y14.5M UNITS: INCHES	.XX ±.01 .XXX ±.005	
ACAD FILE	ANGLES ±2°	
ORIGINAL	THIS DOCUMENT CONTAINS PROPRIETARY INFORMATION WHICH IS THE CONFIDENTIAL PROPERTY OF AMPHENOL PCD INC. PEABODY, MA	

TITLE	SIZE	DWG NO.	REV
RELAY SOCKET SIZE 12 & 16 LOOSE STUD	B	RSE112064	-

PART NO.	CONTACTS SUPPLIED
RSE112064	-
SZ 12/12 CNS128900	SZ 16/16 CNS126900

CHKD	APPD
APPD	APPD
CODE: 58982	1:1
SHEET 1	OF 1