

Opticom® Fiber Slack Management Accessories

- Slack management and cable routing accessories for use in Opticom® Rack Mount and Wall Mount Fiber Enclosures

- Maintain minimum bend radius and ensure proper cable management
- Smooth rounded edges on all surfaces eliminate potential for snagging and stress on fiber optic cables



FMS1



FMS2



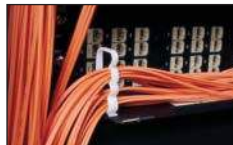
FMSS



FEBRC



FMFIN



VWS106



VWSDC

Part Number	Part Description	Std. Pkg. Qty.	Std. Ctn. Qty.
Fiber Slack Management Spools			
FMS1	Spools and manages fiber slack in Opticom® 1RU Rack Mount Fiber Enclosures. Features fiber retention tabs and fingers. Comes with two spools and adhesive mounts. Dimensions: 1.00"H x 4.00" dia. (25.4mm x 100.0mm)	1	10
FMS2	Spools and manages fiber slack in Opticom® 2RU or 4RU Rack Mount Fiber Enclosures. Features fiber retention tabs and fingers. Comes with two spools and adhesive mounts. Dimensions: 1.60"H x 4.00" dia. (40.6mm x 100.0mm)	1	10
FMSS	Top-hat style fiber slack spool for Opticom® Wall Mount Enclosures. Single spool with adhesive mount. Dimensions: 1.25"H x 2.50" dia. spool, 3.25" dia. flange (31.8mm x 63.5mm spool, 82.6mm flange)	1	10
Bend Radius Control Accessories			
FEBRC	Fiber enclosure bend radius control clip for use with Opticom® 1RU and 2RU Rack Mount Enclosures. Maintains proper bend radius control of fiber patch cords from patch field to vertical fiber manager; includes two bend radius control clips. Dimensions: 1.50"H x .09"W x 3.10"D (79.8mm x 21.8mm x 39.1mm)	1	—
FMFIN	Fiber manager fin; individual fiber management fin with NyLatch fastener for attachment to FCE4U Opticom® Fiber Cassette Enclosure front patch cord manager. Dimensions: 3.60"H x 1.00" dia. (92.1mm x 25.4mm)	1	—
PZBR3.5	Bend Radius Post Kit for use with FCE4U Opticom® Fiber Cassette Enclosure; 3.5" (89mm) long. Maintains proper bend radius control of fiber patch cords within patch field; includes two bend radius posts and hardware.	1	10
Accessories For Rack Mount Enclosures			
VWS106-C	Single saddle clip for fiber slack management and fiber patch cord routing. Accepts up to 1.06" dia (26.9mm) cable bundle. Nylon 6.6 material, natural color. Push mount into 0.18" (4mm) pre-drilled holes in Opticom® Fiber Enclosures.	100	500
VWSDC-C	Dual saddle clip for fiber slack management and fiber patch cord routing. Accepts two cable bundles up to 1.06" dia (26.9mm) each. Nylon 6.6 material, natural color. Push mount into 0.18" (4mm) pre-drilled holes in Opticom® Fiber Enclosures.	100	500