

4

3

2

1


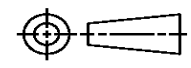
THIS DRAWING IS UNPUBLISHED. RELEASED FOR PUBLICATION  
 © COPYRIGHT ALL RIGHTS RESERVED.

LOC	DIST	REVISIONS			
P	LTR	DESCRIPTION	DATE	DWN	APVD
	A1	ECR-16-009824	27JUL2016	GK	SD

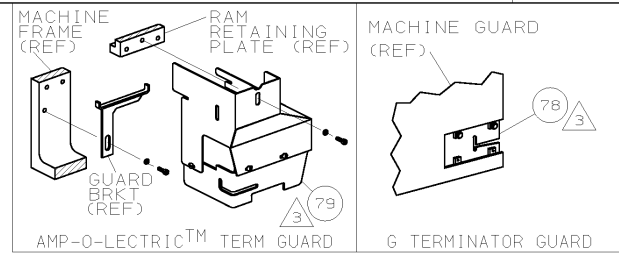
# REPLACED BY OCEAN STYLE APPLICATOR PART NUMBER 2150655-2

FOR REPLACEMENT PARTS FOR APPLICATOR 1385329 REFER TO ADDITIONAL PAGE(S). SPARE PARTS KIT (IF LISTED) WILL REMAIN AVAILABLE.

THE REPLACEMENT OCEAN STYLE APPLICATOR HAS THE SAME TERMINATOR/PRESS INTERFACE AS APPLICATOR 1385329

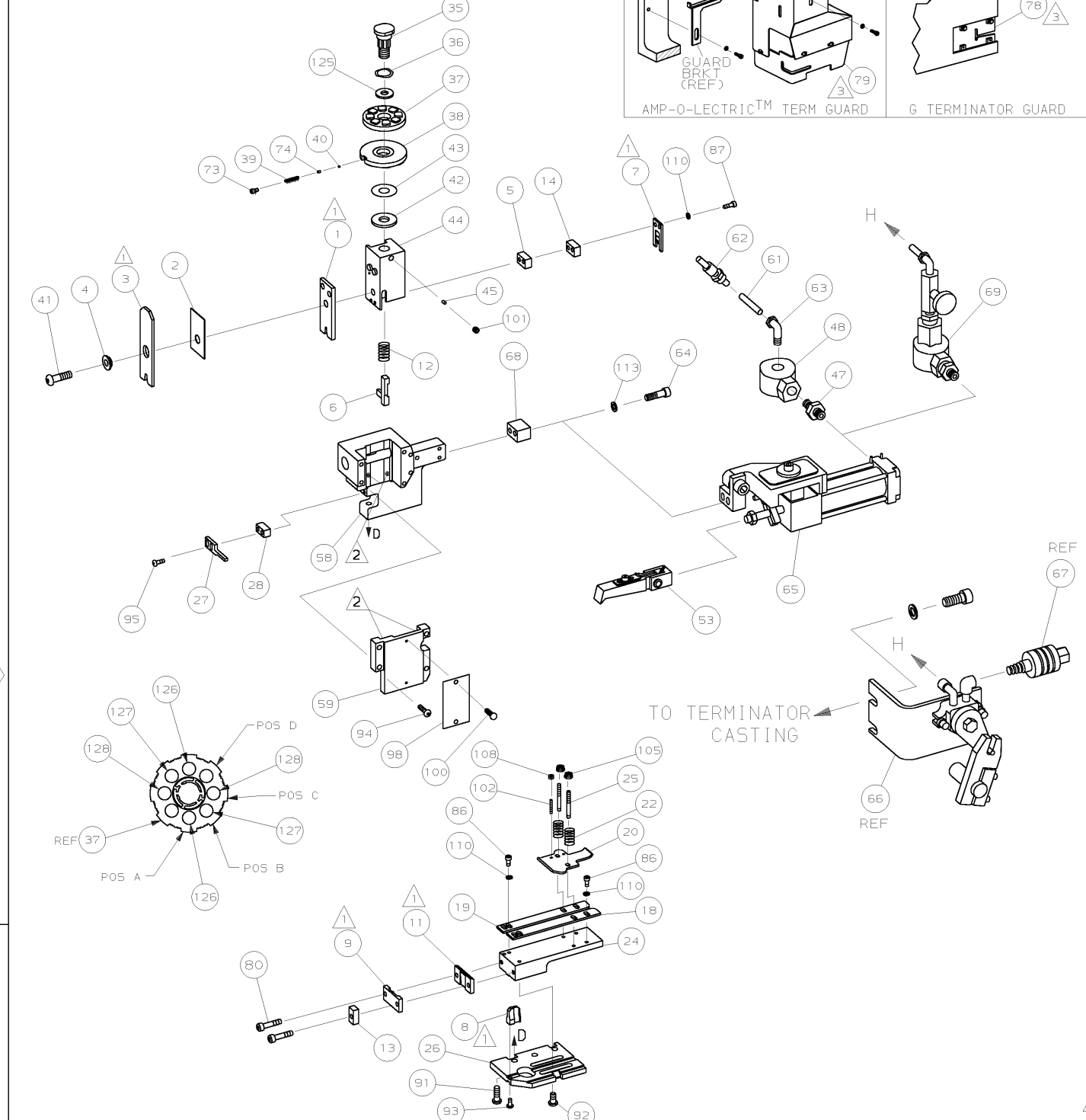
THIS DRAWING IS A CONTROLLED DOCUMENT.		DWN	GOPALAKRISHNA HV		 TE Connectivity
DIMENSIONS:		CHK	GOPALAKRISHNA HV		
		APVD	STOUGH DALE		NAME END FEED HDM APPLICATOR
TOLERANCES UNLESS OTHERWISE SPECIFIED:		PRODUCT SPEC			
0 PLC ± 1 PLC ± 2 PLC ± 3 PLC ± 4 PLC ± ANGLES ±		APPLICATION SPEC			SIZE A3
MATERIAL		WEIGHT	CAGE CODE	DRAWING NO	
FINISH		CUSTOMER DRAWING		SCALE	SHEET 1 OF 2 REV A1
				©- 1385329	

PART NUMBER	REV	FIRST USED
1385329-1	A	122500-1
1385329-2	A	565435-5



TERMINAL NAME: .110 FASTIN-FASTON			
AMP LTR	CRIMP HEIGHT	WIRE SIZE	
A	.057 ±.002 [1.45 ±0.05mm]	20	
B	.054 ±.002 [1.37 ±0.05mm]	22	
C	.052 ±.002 [1.32 ±0.05mm]	24	
D	NOT	USED	
CRIMP	SIZE	TYPE	RANGE
WIRE	.080 [2.03mm]	F	24-20
INSUL	.130 [3.30mm]	F	.050-.110

-1 LEADMAKER & BENCH MODEL G		AIR FEED	
-2 BENCH MODEL K		AIR FEED	
1	-	C	692655-5
1	1	A	461690-3
REF	-	A	24042-2
REF	-	C	692655-6
1	1	B	2-460277-1
2	2	A	3-21000-9
-	1	A	980285-2
-	1	A	23238-1
-	12.00	IN	A 27319-4



QTY	RECD	PER ASSY	U/M	DWG SIZE	PART NO	DESCRIPTION	ITEM NO
2	2	-	C		1-354779-6	PIN, WIRE DISC (.3070)C	129
2	2	-	C		1-354779-1	PIN, WIRE DISC (.3045)B	127
2	2	-	C		354779-5	PIN, WIRE DISC (.3015)A	126
1	1	-	A		986950-1	WASHER, FLAT PRECISION	125
1	1	-	A		217238-1	GENERAL INSTRUCTION PACKAGE	124
1	1	-	-		4088039	EF APPL INST 408-8039	123
2	2	-	A		21024-5	WASHER, LOCK (#10) AIR ASSY	113
4	4	-	A		21024-4	WASHER, LOCK (NO.8) SHEAR BL	110
2	2	-	A		21018-4	NUT, HEX (4-40) DRAG	108
2	2	-	A		21022-2	NUT, HEX SL (8-32) DRAG STUD	105
2	2	-	A		2-21006-6	SCR, SKT SET (4-40x.62) DRAG	102
1	1	-	A		21009-2	SCR, SKT SET (1/4-20x.25) RAM	101
2	2	-	A		21017-2	SCR, DRIVE (#2x.19) ID PLATE	100
1	1	-	B		461264-1	PLATE, IDENTIFICATION	98
2	2	-	A		2-21002-2	SCR, BHC (8-32x.50) STRIPPER	95
4	4	-	A		2-21002-9	SCR, BHC (10-32x.75) CAP	94
1	1	-	A		22733-8	SCR, BHC (8-32x.38 LW) ANVIL	93
4	4	-	A		3-21002-3	SCR, BHC (1/4-20x.50) ST 6D PL	92
3	3	-	A		2-22733-8	SCR, BHC (1/4-20x.62) H5G	91
2	2	-	A		2-21000-8	SCR, 5HC (8-32x.62) SLUG BLADE	87
4	4	-	A		2-21000-6	SCR, 5HC (8-32x.38) STRIP GUIDE	86
2	2	-	A		2-21002-9	SCR, BHC (10-32x.75) SHEAR PL	80
1	-	-	A		455750-8	GUARD ASSY	79
-	REF	-	A		679532-1	INSERT, GUARD	78
1	1	-	A		690603-1	SPRING, ASSIST	74
1	1	-	A		23030-1	SCR, SKT CAP (6-32x.25) CP D5C	73

QTY	RECD	PER ASSY	U/M	DWG SIZE	PART NO	DESCRIPTION	ITEM NO
1	1	-	C		454220-1	CAP, RAM	59
1	1	-	D		453736-1	HOUSING	58
1	1	-	C		454220-1	CAP, RAM	59
1	1	-	D		453736-1	HOUSING	58
1	1	-	B		460680-2	FEED FINGER ASSY	53
-	1	-	A		22374-7	VALVE, QUICK EXHAUST	48
-	1	-	A		22304-1	NIPPLE, HEX 1/8 NPT	47
1	1	-	A		690191-1	PLUG, NYLON	45
1	1	-	C		455674-1	RAM	44
1	1	-	A		690125-1	WASHER, LAMINATED	43
1	1	-	A		1-690124-4	WASHER, RAM	42
1	1	-	A		7-21002-9	BOLT, CRIMPER (5/16-24x1.00)	41
1	1	-	A		23241-6	BALL, STEEL	40
1	1	-	A		690170-1	SPRING, COMPRESSION	39
1	1	-	C		690142-1	DISC, INSULATION	38
1	1	-	D		354777-1	WIRE DISC, PLASTIC	37
1	1	-	A		22480-5	WASHER, SPRING	36
1	1	-	B		690212-1	POST, RAM	35
1	1	-	B		3-690451-2	SPACER, STRIPPER	28
1	1	-	A		240639-1	STRIPPER	27
1	1	-	D		455676-1	PLATE, BASE	26
2	2	-	A		22354-8	DRAG, STUD	25
1	1	-	B		455678-1	PLATE, STRIP GUIDE	24
2	2	-	A		4-22281-1	SPRING, DRAG	22
1	1	-	A		454177-1	DRAG, STOCK	20
1	1	-	B		458030-4	GUIDE, STRIP (REAR)	19
1	1	-	C		458031-4	GUIDE, STRIP (FRONT)	18
1	1	-	C		3-240641-4	SPACER, SLUG BLADE	14
1	1	-	C		690481-3	SPACER, HOLD DOWN	13
1	1	-	A		23846-1	SPRING, HOLD DOWN	12
1	1	-	B		240644-1	PLATE, REAR SHEAR	11
1	1	-	B		690482-5	PLATE, FRONT SHEAR	9
1	1	-	D		8-461295-6	ANVIL	8
1	1	-	B		690474-5	BLADE, SLUG	7
1	1	-	D		1-455892-5	HOLD DOWN, TERMINAL	6
1	1	-	C		2-240641-9	SPACER, SLUG BLADE	5
1	1	-	B		1-238009-2	SPACER, BLOCK CRIMPER	4
1	1	-	C		4-456134-3	CRIMPER, INSULATION	3
1	1	-	B		1-455888-7	SPACER, CRIMPER	2
1	1	-	C		1-456405-4	CRIMPER, WIRE	1

- 1 RECOMMENDED SPARE PARTS.
- 2 GREASE LIGHTLY.
- 3 GUARD MUST BE IN PLACE WHEN OPERATING APPLICATOR IN A BENCH MACHINE.
- 4 SEE DRAWING FOR COMPONENTS
- 5 ITEM 78 USED WITH G TERMINATOR ONLY.

QTY	RECD	PER ASSY	U/M	DWG SIZE	PART NO	DESCRIPTION	ITEM NO
2	2	-	A		2-21002-9	SCR, BHC (10-32x.75) SHEAR PL	80
1	-	-	A		455750-8	GUARD ASSY	79
-	REF	-	A		679532-1	INSERT, GUARD	78

QTY	RECD	PER ASSY	U/M	DWG SIZE	PART NO	DESCRIPTION	ITEM NO
1	1	-	C		3-240641-4	SPACER, SLUG BLADE	14
1	1	-	C		690481-3	SPACER, HOLD DOWN	13
1	1	-	A		23846-1	SPRING, HOLD DOWN	12
1	1	-	B		240644-1	PLATE, REAR SHEAR	11

LOC A  
DIST 66  
AMP 1756 REV 3-92  
02-OCT-01 13:50:32 amp14442

QTY	RECD	PER ASSY	U/M	DWG SIZE	PART NO	DESCRIPTION	ITEM NO
2	2	-	A		2-21002-9	SCR, BHC (10-32x.75) SHEAR PL	80
1	-	-	A		455750-8	GUARD ASSY	79
-	REF	-	A		679532-1	INSERT, GUARD	78

AMP Incorporated  
Harrisburg, PA 17105-3608  
NAME: END FEED HDM APPLICATOR MINI APPL  
SCALE: 1 of 1  
SHEET: 1 of 1  
REV: A