

NOTES:

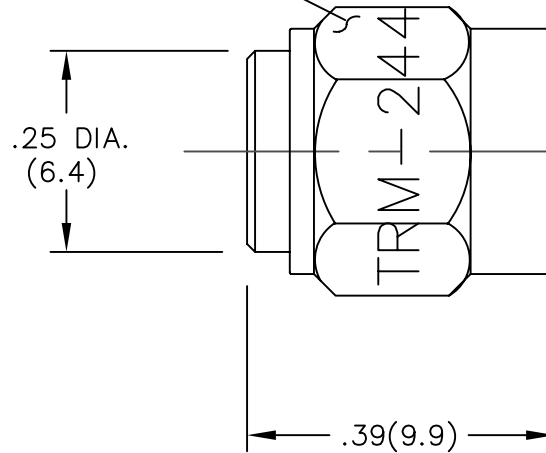
1.0 ELECTRICAL SPECIFICATIONS:

- 1.1 FREQUENCY RANGE: DC to 26.5 GHz
- 1.2 MAXIMUM INPUT POWER: 0.5 WATTS @ +25°C  
DERATED LINEARLY TO 0 WATTS @ +125°C
- 1.3 OPERATING TEMP. RANGE: -55°C to +125°C
- 1.4 IMPEDANCE: 50 OHMS
- 1.5 VSWR (MAX.):  
DC to 18.0 GHz: 1.05 + 0.008f(GHz)  
18.0 to 26.5 GHz: 1.30:1

2.0 DIMENSIONS IN PARENTHESIS ARE IN MILLIMETERS.

3.0 MARKING: MARK UNIT AS SHOWN  
(REF.: INK-09035-27-03)


MARK THIS  
SURFACE



SMA MALE CONN.  
PER MIL-PRF-39012

MODEL NUMBER  
TRM-2443-M0-SMA-02

REV.	DESCRIPTION	DATE
-	RELEASED	3/10/94
A	ECN 14170	12/19/94
A1	ADDED TITLEBLOCK	11/15/05

NOTICE: The information contained in this drawing is proprietary and must not be used without the permission of Emerson Network Power.		CAGE CODE <b>34078</b>		<b>MIDWEST MICROWAVE</b>	
UNLESS OTHERWISE NOTED DIMENSIONS ARE IN INCHES AND TOLERANCES ARE: 3 PLACE DECIMALS ±.005 2 PLACE DECIMALS ±.02 FRACTIONS ±1/64 PARALLELITY: T.I.R. _____ FLATNESS: T.I.R. _____ CONCENTRICITY: T.I.R. _____ ANGLES AND PERPENDICULARITY: ±1'		 <b>EMERSON</b> Network Power Connectivity Solutions		TITLE  TERMINATION OUTLINE DRAWING	
DRAWN/DATE A.BEATTY 2/7/94	ENG./DATE G.KOZAK 3/9/94	DRAWING NUMBER TRM-2443-M0-SMA-02-01		REV. A1	
CHECKED/DATE M.HOLLMAN 3/8/94	APPROVED/DATE	SCALE: 5=1	SHEET 1 of 1		