

CUSTOMER PRINT

PART NUMBER: SF4282-XXEPG-3ES

NOTES:

1. FINISHED CONNECTOR ASSEMBLIES ARE PACKED INTO A PARTITION BOX, TOTAL (25) PIECES PER BOX. BOX IS LABELED WITH CONXALL PART NUMBER AND DATE CODE.
2. HEX NUT IS BULK PACKED IN A POLY BAG. PROTECTIVE CAP AND O-RING ARE INSTALLED ON CONNECTOR.
3. TERMINATING END OF CONNECTOR TO BE FILLED WITH BLACK EPOXY
4. MASTER KEY AT 12 O'CLOCK
5. PANEL MOUNT FLAT AT 9 O'CLOCK
6. SOLDER CUPS TO FACE MASTER KEY OF INSERT.
7. ALL DIMENSION ARE REFERENCE ONLY EXCEPT WHEN NOTED WITH TOLERANCE

CUSTOMER APPROVAL

THIS DOCUMENT CONTAINS CONFIDENTIAL INFORMATION PROPRIETARY TO CONXALL CORPORATION. ANY REPRODUCTION, DISCLOSURE, OR USE OF THIS DOCUMENT /INFORMATION IS EXPRESSLY PROHIBITED UNLESS AUTHORIZED IN WRITING BY CONXALL CORPORATION.

APPROVED BY: _____

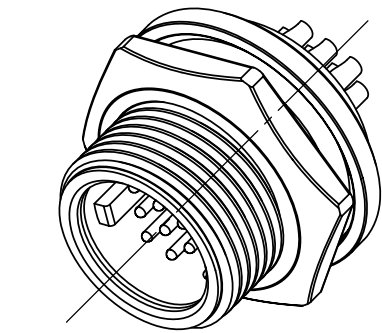
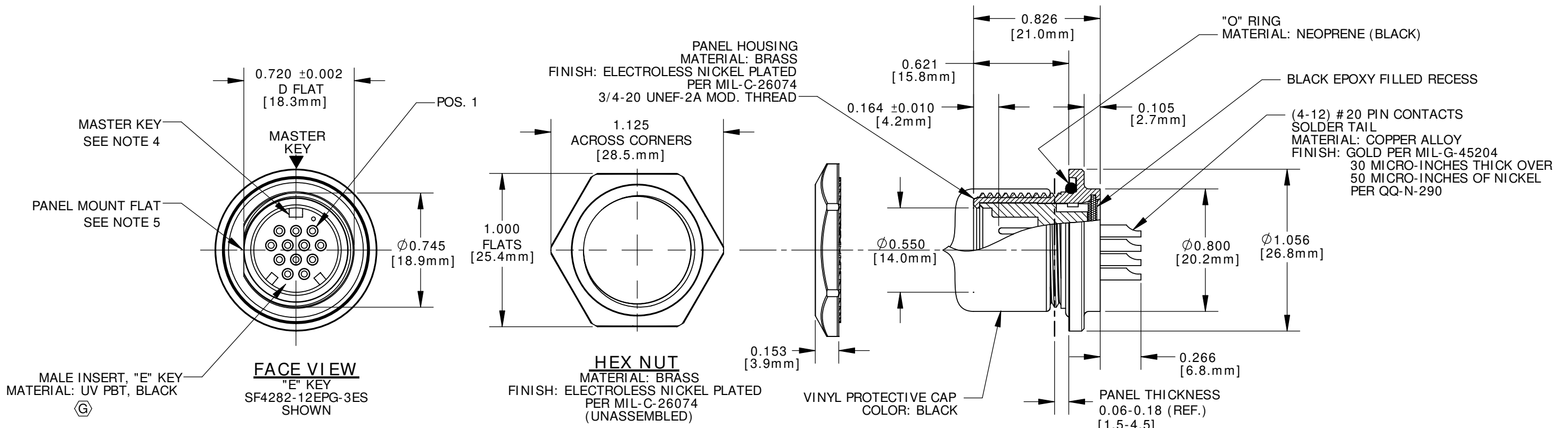
DATE: _____

POSITION

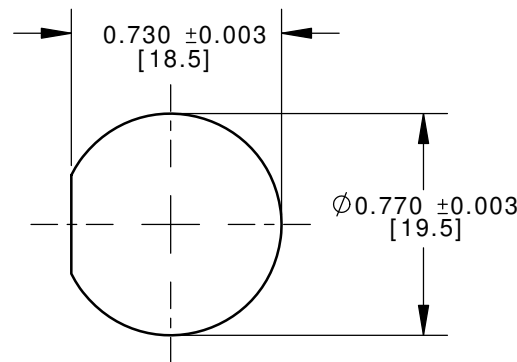
ASSY. P/N	POS 1	POS 2	POS 3	POS 4	POS 5	POS 6	POS 7	POS 8	POS 9	POS 10	POS 11	POS 12
SF4282-4EPG-3ES	OPEN	---	OPEN	--	OPEN	---	--	OPEN	--	---	---	---
SF4282-5EPG-3ES	---	OPEN	---	OPEN	---	OPEN	OPEN	--	OPEN	---	---	---
SF4282-6EPG-3ES	OPEN	OPEN	---	OPEN	OPEN	---	OPEN	OPEN	---	---	---	---
SF4282-7EPG-3ES	OPEN	OPEN	OPEN	OPEN	---	OPEN	OPEN	---	OPEN	---	---	---
SF4282-8EPG-3ES	OPEN	---	OPEN	OPEN	OPEN	OPEN	OPEN	OPEN	OPEN	---	--	---
SF4282-9EPG-3ES	OPEN	OPEN	OPEN	OPEN	OPEN	OPEN	OPEN	OPEN	OPEN	---	--	---
SF4282-10EPG-3ES	OPEN	OPEN	OPEN	OPEN	OPEN	OPEN	OPEN	OPEN	OPEN	OPEN	---	---
SF4282-11EPG-3ES	OPEN	OPEN	OPEN	OPEN	OPEN	OPEN	OPEN	OPEN	OPEN	OPEN	OPEN	---
SF4282-12EPG-3ES	OPEN	OPEN	OPEN	OPEN	OPEN	OPEN	OPEN	OPEN	OPEN	OPEN	OPEN	OPEN
SF4282-XXEPG-3ES												

NUMBER OF CONTACTS
4 THROUGH 12

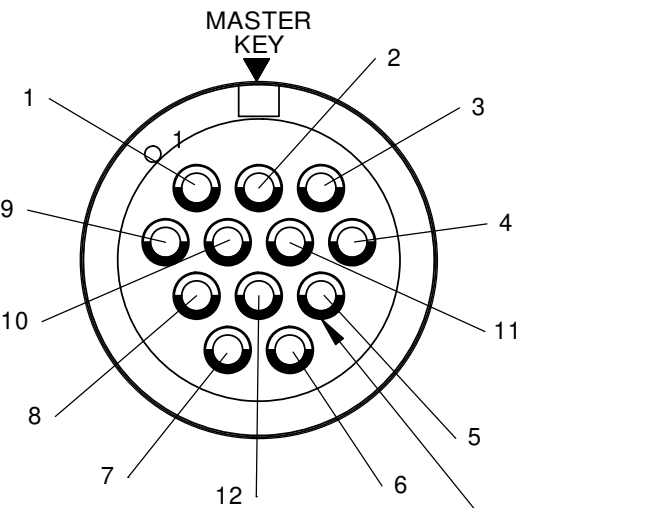
"---" HALF CLOSED FROM MATING END



ASSEMBLED VIEW FOR CUSTOMER REFERENCE ONLY (WITHOUT PROTECTIVE CAP) SF4282-12EPG-3ES SHOWN



RECOMMENDED PANEL CUT-OUT



WIRE VIEW SF4282-12EPG-3ES SHOWN

DIMENSIONS IN BRACKETS [] ARE METRIC, mm.

RoHS COMPLIANT

G	MA	10-10-19	MALE INSERT MATL WAS NYLON, BLACK PER ECR 9439
F	AN	03-20-19	DIM. 0.266 WAS 0.271, 0.164 WAS 0.169, ADDED NOTE 7. PER ECR 9338
E	JD	06-20-17	UPDATED SHIPPING/PACKAGING NOTES AND VIEWS AND ADDED NOTE FOR SOLDER CUP ORIENTATION PER ECR 8380
D	AN	01-11-13	UPDATED MANUFACTURING NOTE PER ECR 8264
C	AN	11-22-11	UPDATED NOTE 1, ADDED ALL POSITIONS TO CHART. PER ECR 8031
B	DT	07-21-08	REPLACED MULTI-SHIELD-CON WITH SHIELDED MULTI-CON-X PER ECR 6903
	RCS	10-11-05	FILE NO. WAS SF4282-12PG-3ES
A	RCS	01-14-04	DRAWING CREATED PER DOR #03-9008KN
REV.	INIT.	DATE	DESCRIPTION
	RCS	01-14-04	ALL INFORMATION ILLUSTRATED IS THE PROPERTY OF CONXALL CORPORATION. UNAUTHORIZED DUPLICATION OR DISTRIBUTION OF THIS DOCUMENT IS PROHIBITED.
			ALL UNITS ARE IN FEET, INCHES, FRACTION OF INCHES AND DECIMALS.
APPROVED BY:		TITLE: SHIELDED PANEL ASS'Y (4-12) #20 PIN CONTACTS SHIELDED MULTI-CON-X STANDARD PRODUCT	
SCALE: NTS	SIZE: B	SHEET: 1 OF 1	CUSTOMER: SF4282-XXEPG-3ES
FILE: SF4282-XXEPG-3ES	DIRECTORY: SLW	PART NUMBER: SF4282-XXEPG-3ES	REV: G



601 E. WILDWOOD VILLA PARK, IL 60181