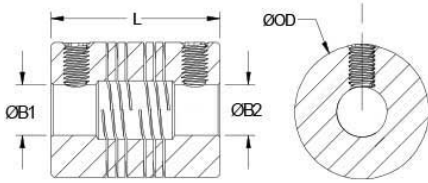




PSMR13-3-3-SS

Ruland PSMR13-3-3-SS, 3mm x 3mm Four Beam Coupling, Stainless Steel, Set Screw Style, 12.7mm OD, 19.1mm Length




Description

Ruland PSMR13-3-3-SS is a set screw style four beam coupling with 3mm x 3mm bores, 12.7mm OD, and 19.1mm length. It is machined from a single piece of material and feature two sets of two spiral cuts. This gives it higher torque capacity, lower windup, and larger body sizes than single beam couplings. PSMR13-3-3-SS is zero-backlash and has a balanced design for reduced vibration at high speeds of up to 6,000 RPM. This four beam spiral coupling is zero-backlash and has a balanced design for reduced vibration at high speeds of up to 6,000 RPM. All hardware is metric and tests beyond DIN 912 12.9 standards for maximum torque capabilities. PSMR13-3-3-SS is made from 303 stainless steel for increased torque capacity. It is machined from bar stock that is sourced exclusively from North American mills and RoHS3 and REACH compliant. PSMR13-3-3-SS is manufactured in our Marlborough, MA factory under strict controls using proprietary processes.

Product Specifications

Bore (B1)	3 mm	Small Bore (B2)	3 mm
B1 Max Shaft Penetration	9.0 mm	B2 Max Shaft Penetration	9.0 mm
Outer Diameter (OD)	12.7 mm	Bore Tolerance	+0.025 mm / -0.000 mm
Length (L)	19.1 mm	Recommended Shaft Tolerance	+0.000 mm / -0.013 mm
Forged Set Screw	M2	Screw Material	Alloy Steel
Hex Wrench Size	0.9 mm	Screw Finish	Black Oxide
Seating Torque	0.21 Nm	Number of Screws	2 ea
Dynamic Torque Reversing	0.31 Nm	Angular Misalignment	3°
Dynamic Torque Non-Reversing	0.62 Nm	Parallel Misalignment	0.20 mm
Static Torque	1.24 Nm	Axial Motion	0.13 mm
Torsional Stiffness	3.26 Deg/Nm	Moment of Inertia	0.351 x10 ⁻⁶ kg-m ²
Maximum Speed	6,000 RPM	Full Bearing Support Required?	Yes
Zero-Backlash?	Yes	Material Specification	Type 303 Austenitic, Non-Magnetic Bar
Temperature	-40°F to 350°F (-40°C to 176°C)	Finish Specification	Bright, No Plating
Manufacturer	Ruland Manufacturing	Country of Origin	USA
Weight (lbs)	0.035000	UPC	634529050095
Tariff Code	8483.60.8000	UNSPC	31163003

Note 1	Torque ratings are at maximum misalignment.
Note 2	Performance ratings are for guidance only. The user must determine suitability for a particular application.
Note 3	Torque ratings for the couplings are based on the physical limitations/failure point of the machined beams. Under normal/typical conditions the hubs are capable of holding up to the rated torque of the machined beams. In some cases, especially when the smallest standard bores are used or where shafts are undersized, slippage on the shaft is possible below the rated torque of the machined beams. Please consult technical support for more assistance.

Prop 65  **WARNING** This product can expose you to chemicals including Ethylene Thiourea and Nickel (metallic), known to the State of California to cause cancer

Installation Instructions

- Align the bores of the PSMR13-3-3-SS four beam coupling on the shafts that are to be joined and determine if the misalignment parameters are within the limits of the coupling. (*Angular Misalignment: 3Å°, Parallel Misalignment: 0.20 mm, Axial Motion: 0.13 mm*)
- Fully tighten the M2 screws on one hub to the recommended seating torque of 0.21 Nm using a 0.9

- mm hex torque wrench.
3. Before tightening the screws on the second hub, rotate the coupling by hand to allow it to reach its free length.
 4. Tighten the screws on the second hub to the recommended seating torque. Make sure the coupling remains axially relaxed and the misalignment angle remains centered along the length of the coupling.
 5. The shafts may extend into the relieved portion of the bore as long as it does not exceed the shaft penetration length of 9.0 mm.
-