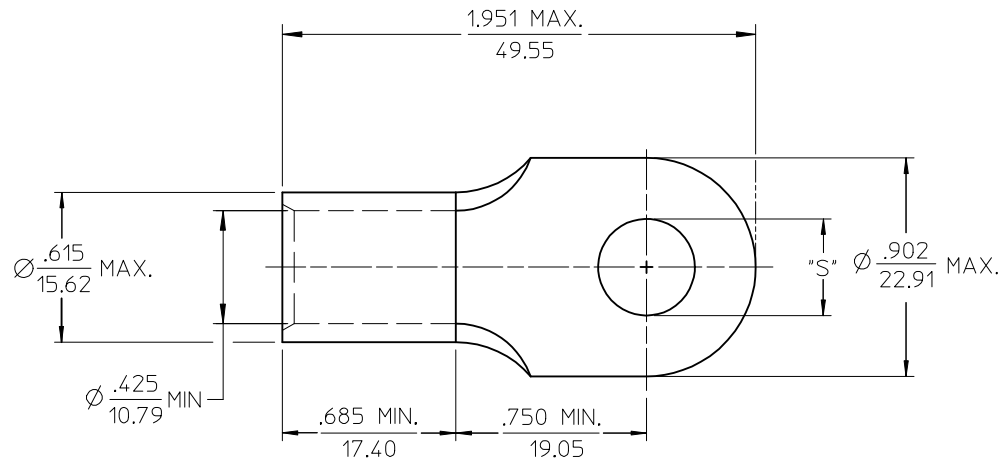


| MATERIAL NO. | ENG. NO. | STUD SIZE | ±.003 "S" | STOCK THICKNESS |
|--------------|----------|-----------|-----------|-----------------|
| 191930326 | H-380-14 | 1/4 | .265 | .075 (1.90) |
| 191930328 | H-380-56 | 5/16 | .328 | |
| 191930612 | H-380-38 | 3/8 | .390 | |
| 191930329 | H-380-76 | 7/16 | .453 | |
| 191930325 | H-380-12 | 1/2 | .515 | |



SALES DRAWING

- NOTE(S):
1. MATERIAL: COPPER
 2. PLATING: ELECTROPLATE TIN
 3. ALL DIMENSIONS IN INCHES/(MM)
 4. WIRE SIZE: 1/0 AWG
50 MM²
 5. PART IS ROHS COMPLIANT.

| | | | | | | |
|---|-----------------|---|-----------------|---|--------------|---|
| REV CHART & ADDED ROHS EC NO: ETC2007-0397 DRAWN BY: DRWAHEHLE 2007/04/27 CHKD: JMAGNEIL 2007/05/09 APPR: JMAGNEIL 2007/05/10 | QUALITY SYMBOLS | GENERAL TOLERANCES (UNLESS SPECIFIED) | DIMENSION STYLE | SCALE | DESIGN UNITS | THIRD ANGLE PROJECTION |
| | ▼=0 ▽=0 | mm INCH 4 PLACES ± --- ± --- 3 PLACES ± --- ± .005 2 PLACES ± 0.13 ± .01 1 PLACE ± 0.25 ± --- ANGULAR ± 1/2° | IN/MM | 2:1 | INCH | DRAWN BY DATE GZ 85/04/15 CHECKED BY DATE GZ 85/04/15 APPROVED BY DATE GZ 85/04/15 |
| | | DRAFT WHERE APPLICABLE MUST REMAIN WITHIN DIMENSIONS | MATERIAL NO. | TITLE RING TONGUE TERMINAL, VERSAKRIMP SERIES, 1/0 AWG | | MOLEX INCORPORATED DOCUMENT NO. SD-19193-008 |
| | | | SEE CHART | SHEET NO. 1 OF 1 | | THIS DRAWING CONTAINS INFORMATION THAT IS PROPRIETARY TO MOLEX INCORPORATED AND SHOULD NOT BE USED WITHOUT WRITTEN PERMISSION |