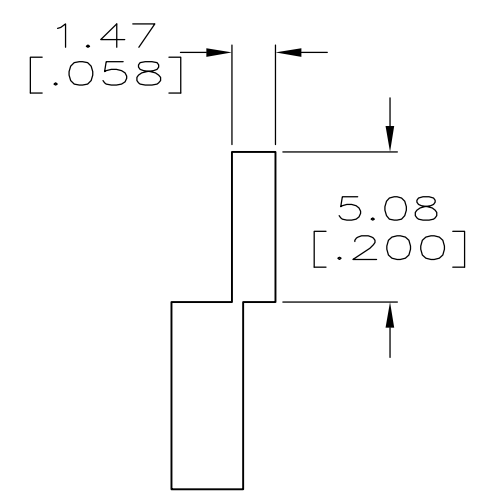
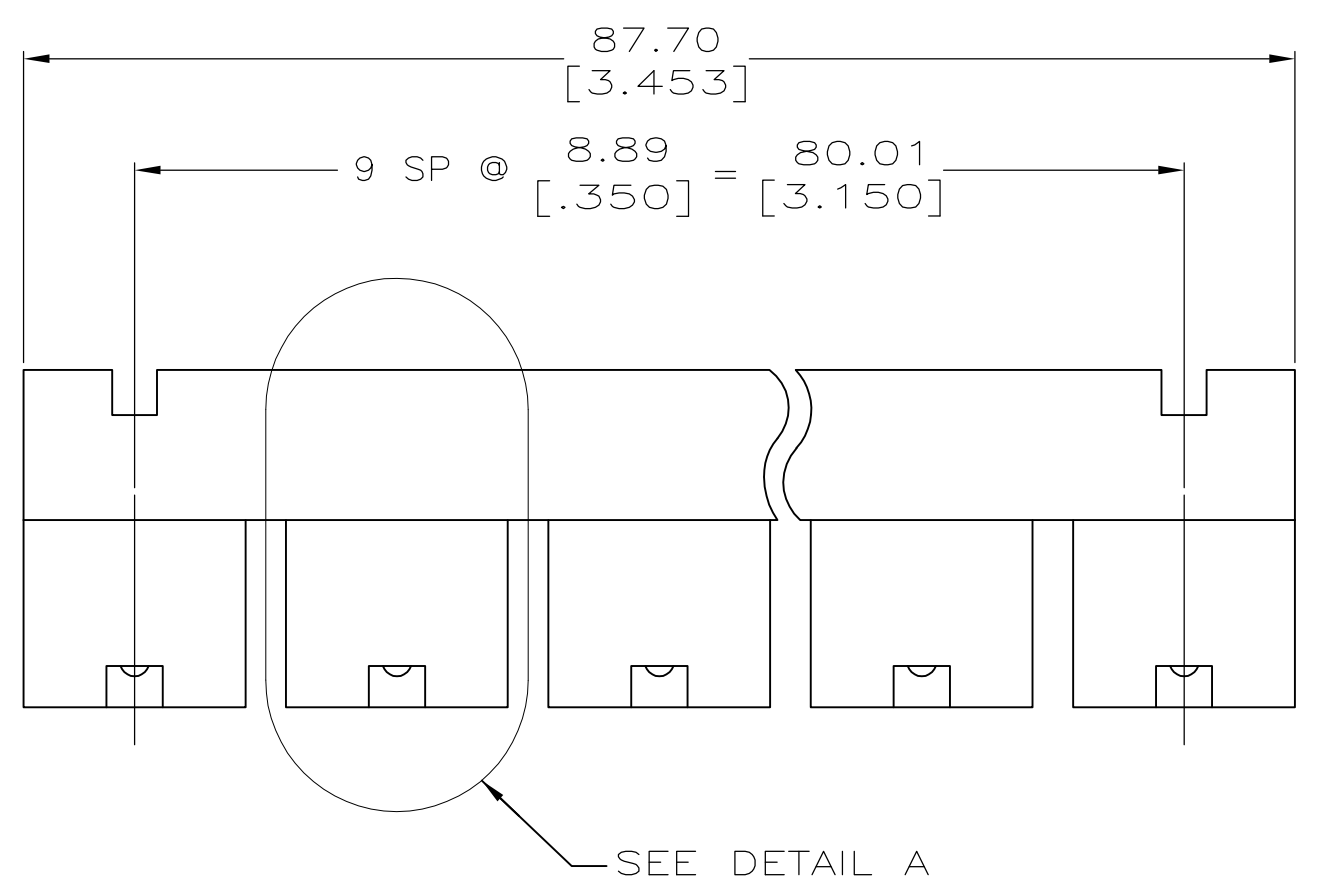
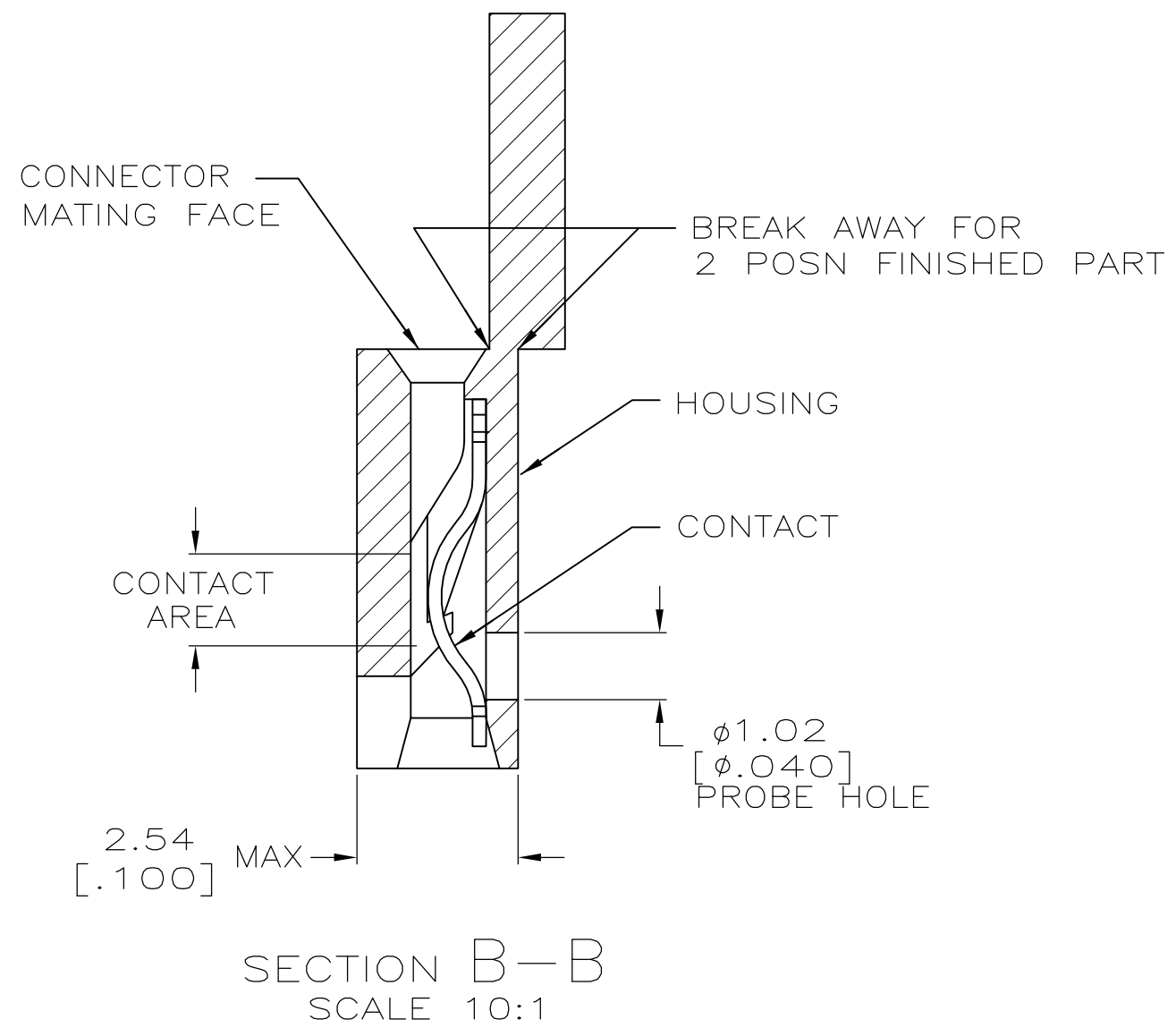
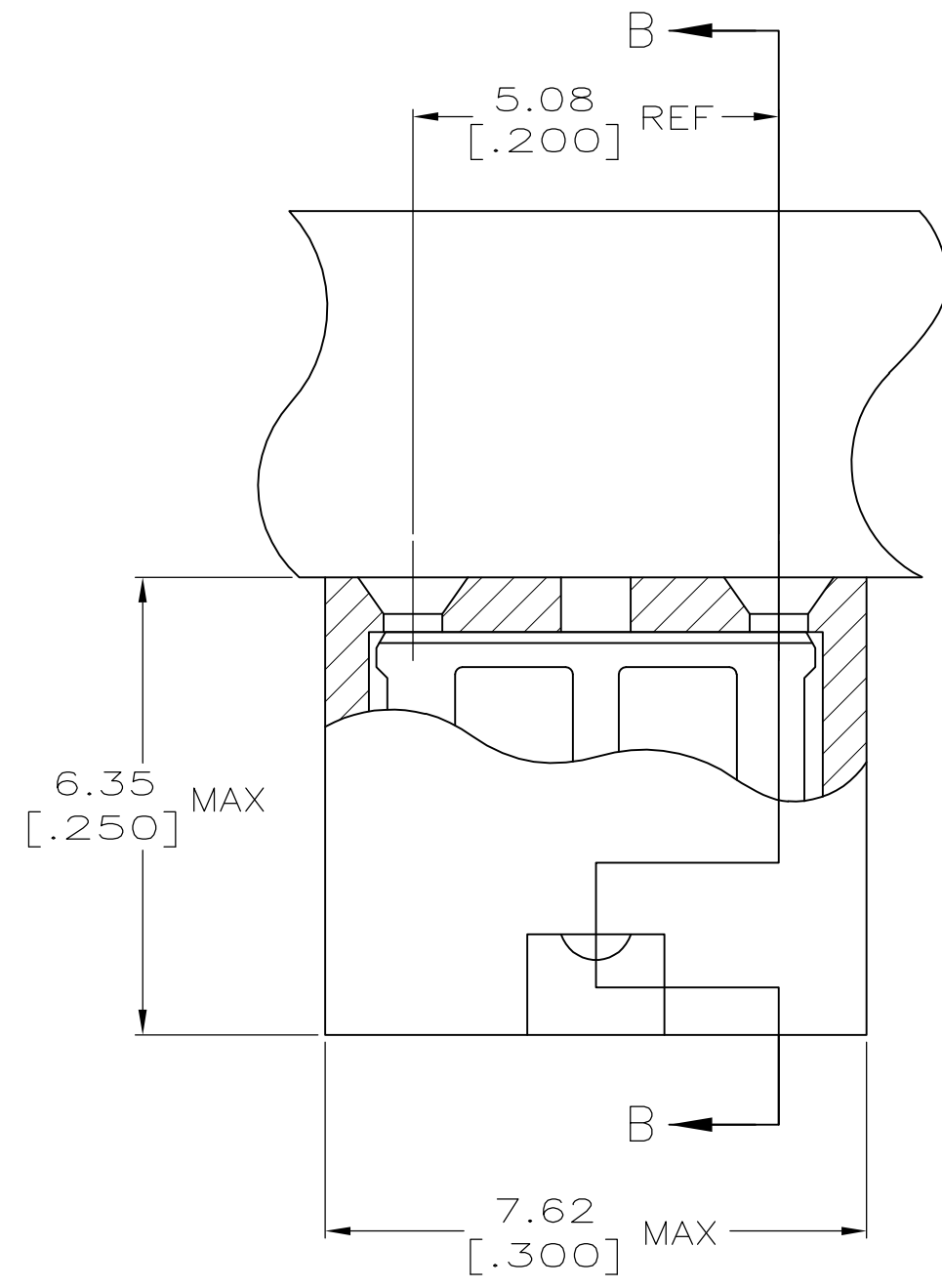


THIS DRAWING IS UNPUBLISHED. RELEASED FOR PUBLICATION  
 © COPYRIGHT - By - ALL RIGHTS RESERVED.

LOC	DIST	REVISIONS			
P	LTR	DESCRIPTION	DATE	DWN	APVD
AG	00				
	F2	REVISED PER ECO-11-004820	11MAR11	RK	HMR



- 1 MATERIAL:  
HOUSING: GLASS-FILLED POLYESTER, COLOR-BLACK.  
CONTACT: BERYLLIUM COPPER.
- 2 CONTACT PLATED WITH 0.00254 [.000100] TIN-LEAD OVER ALL.
- 3 CONTACT PLATED WITH 0.00038 [.000015] GOLD IN CONTACT AREA OVER 0.00127 [.000050] NICKEL OVER ALL.
- 4 CONTACT PLATED WITH 0.00076 [.000030] GOLD IN CONTACT AREA OVER 0.00127 [.000050] NICKEL OVER ALL.
- 5 PART NO. DENOTES INDIVIDUAL TWO POSITION SHUNT, WHICH IS PACKAGED ON BREAKAWAY COMBS OF TEN SHUNTS.
- 6 CONNECTOR MATES WITH WIRE WRAP POSTS, 0.64 [.025] SQUARE OR ROUND AND 0.56 [.022] X 0.66 [.026] POSTS. LENGTH 5.08 [.200] MINIMUM.
- 7 CONTACT PLATED WITH 0.00254 [.000100] MATTE TIN OVER ALL.
- 8 PART NO. DENOTES INDIVIDUAL TWO POSITION SHUNT, WHICH IS PACKAGED LOOSE PIECE.
- 9 PRELIMINARY P/N - NOT RELEASED FOR PRODUCTION



DETAIL A  
SCALE 10:1

SECTION B-B  
SCALE 10:1

FINISH	PART NUMBER
7	531230-5
4	531230-4
3	531230-3
2	531230-2
1	531230-1

THIS DRAWING IS A CONTROLLED DOCUMENT. DWN R.TALLEY 3-12-91  
 CHK -  
 APVD -  
 PRODUCT SPEC 108-9057  
 APPLICATION SPEC 114-1059  
 MATERIAL 1 SEE TABLE  
 FINISH -  
 WEIGHT -  
 CUSTOMER DRAWING

**STE** TE Connectivity  
 LOW PROFILE SHUNT CONNECTOR  
 5.08 [.200] CL

SIZE A2	CAGE CODE 00779	DRAWING NO C=531230	RESTRICTED TO -
SCALE 4:1	SHEET 1 of 1	REV F2	