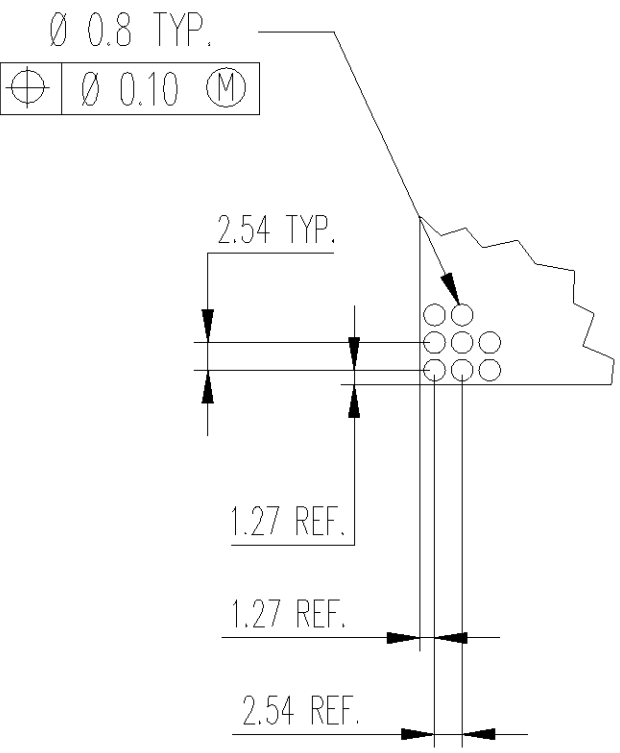
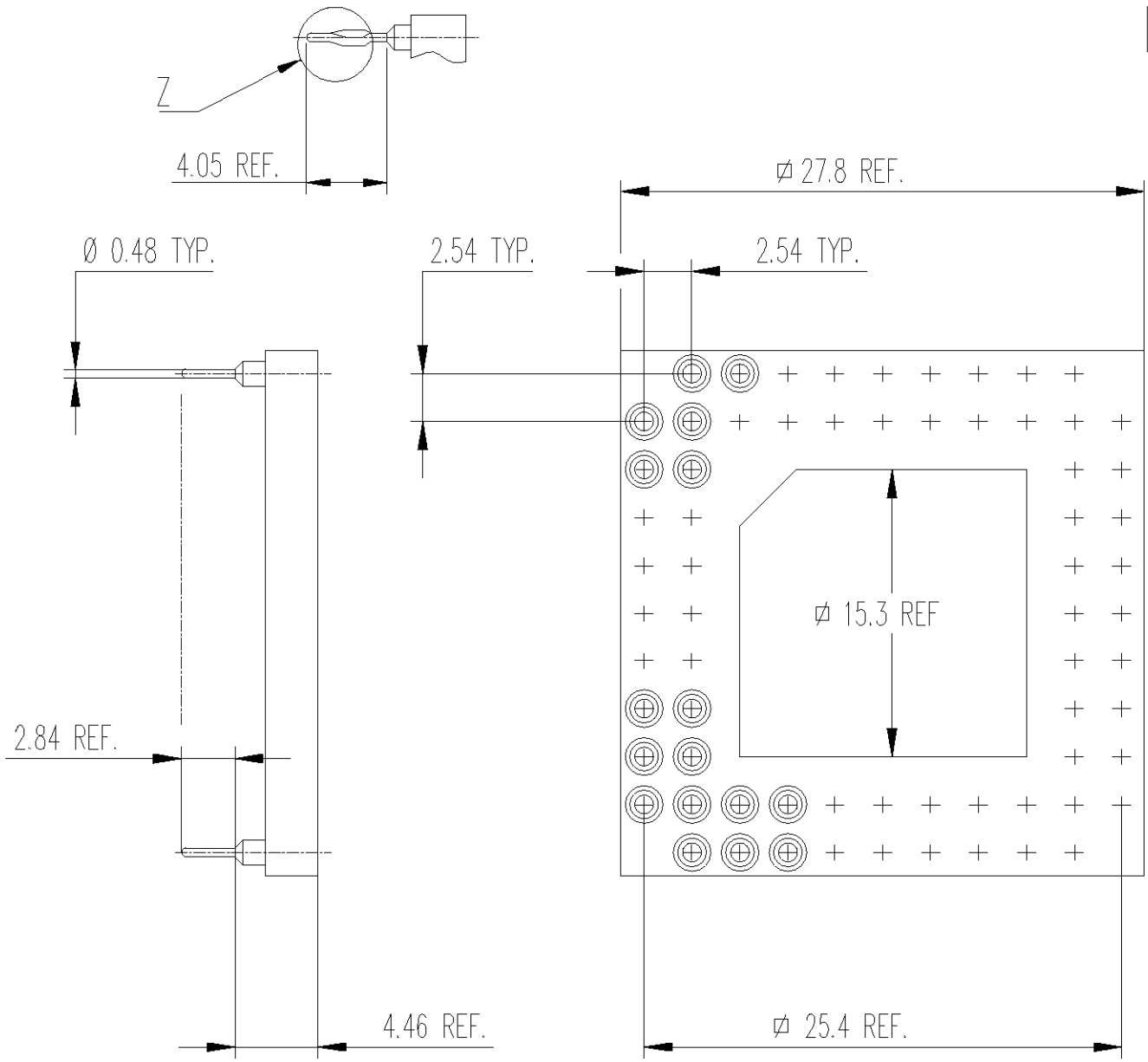


68 POSITIONS  
Ech. 1:1

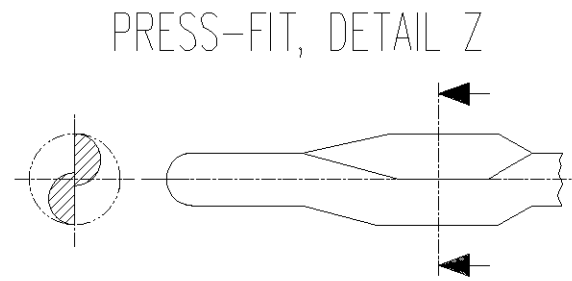
- NOTE :
- 1. MATERIAL
    - INSULATOR : GLASSFILLED THERMOPLASTIC POLYESTER
    - SOLDER TAIL SLEEVE : BRASS
    - PRESS-FIT SLEEVE : PHOSPHOR BRONZE
    - CLIP : STAMPED BERYLLIUM COPPER
  - 2. SLEEVE PLATING:
    - PREFIX "0-" AND "2-": 5µm Sn/Pb OVER 2-3µm Ni
    - PREFIX "1-" AND "3-": 0.25µm Au OVER 2-3µm Ni
    - PREFIX "4-" AND "5-": 3µm Sn/Pb OVER 2-3µm Ni
  - 3. INNER CONTACT PLATING
    - SUFFIX "-1" 0.25µm 18c. Au
    - SUFFIX "-3" 0.75µm 18c. Au
    - SUFFIX "-4" 0.75µm 24c. Au
    - SUFFIX "-5" 5µm MIN. Sn/Pb \*\*
    - SUFFIX "-6" 0.1µm FLASH 24c. Au
    - \*\* ONLY WITH PREFIX "0-", "2-", "4-" AND "5-"
  - 4. INNER SPRING CONTACT ACCEPT Ø 0.40 TO 0.56  
OR RECTANGULAR PIN 0.25 x 0.45
  - 5. INSERTION CHARACTERISTICS:
    - PREFIX "0-", "1-" AND "4-" : VERY LOW FORCE
    - PREFIX "2-", "3-" AND "5-" : ULTRA LOW FORCE
  - 6. MECHANICAL DATA WITH A Ø 0.43 TEST PIN :

	VLI	ULI
-MAX. INSERTION FORCE :	0.7N	0.2N
-MIN. EXTRACTION FORCE :	0.1N	0.05N
-MECHANICAL LIFE : 100 CYCLES MIN.		

WAS 700-68-11-0-CC AND CCAP



RECOMMENDED P.C.  
BOARD PATTERN



PRESS-FIT, DETAIL Z

PREFIX : "4-" AND "5-"  
RECOMMENDED PCB FINISHED  
HOLE SIZE Ø 0.60 +/-0.05

DIMENSIONS		mm						DRAWN S.CHANDEVAVLT		02 NOV 98		THIS INFORMATION IS CONFIDENTIAL AND IS DISCLOSED TO YOU ON CONDITION THAT NO FUTHER DISCLOSURE IS MADE BY YOU TO OTHER THAN AMP PERSONNEL WITHOUT WRITTEN AUTHORIZATION FROM DSM SWITZERLAND.															
								CHECKED A. BOLIS		02 NOV 98																	
SURFACE TEXTURE								APPROVED P.-A. MEIER		16 NOV 98																	
CONCENTRICITY				0.15		02	EW00-0083-02		E. BRESSOUD		16 APR 02		H. CACHOD		NAME  OPEN FRAME PGA 11 x 11, 68 SOCKETS												
PRODUCT SPEC.				P	REV	ECN		DRWN		DATE		APVD		CUSTOMER DRAWING FOR REFERENCE ONLY													
								DSM DECOLLETAGE SA SAINT-MAURICE CH 1890 SAINT-MAURICE (VS)								LOC EK		SCALE 2:1		SIZE A4		DRAWING NO C- 345442		SHEET 1 OF 1		REVISION 02	