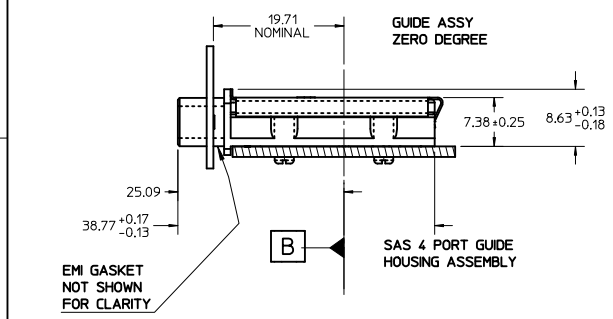
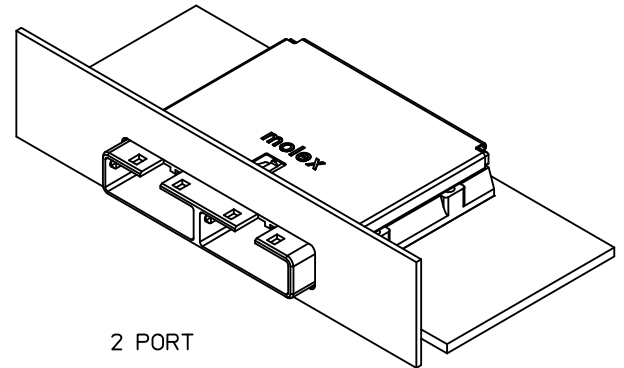
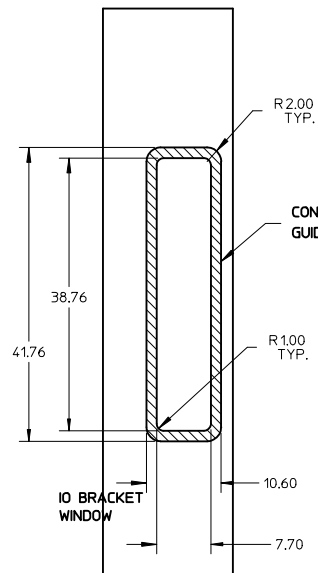
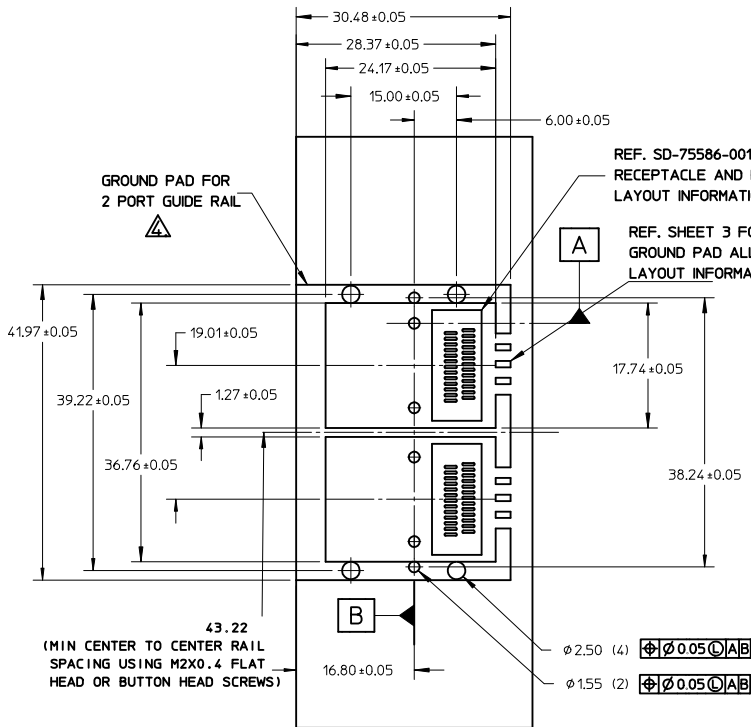


- NOTES:
1. PCB AND BRACKET SHOWN FOR REFERENCE ONLY.
 2. REF. SD-74547-100 FOR KEY POSITIONS
 3. GUIDE HOUSING MOUNTING THREAD= M2 X 0.40, SEE SHEET 3 FOR SCREW LENGTH + TORQUE SPEC.
 4. PLATE GROUND PAD WITH EMERSION SILVER OR GOLD.
 5. MATERIAL:
GUIDE HOUSING - ZINC DIECAST, NICKEL PLATED
COVER - STAINLESS STEEL
 6. THIS PRODUCT MEETS THE RESTRICTION OF HAZARDOUS SUBSTANCES IN ELECTRICAL AND ELECTRONIC EQUIPMENT (RoHS) DIRECTIVE (2002/95/EC)
 7. GUIDE HOUSING PEGS FOR ALIGNMENT ONLY, DO NOT SOLDER.
 8. THIS GUIDE HOUSING ASSEMBLY IS UNIVERSAL FOR SAS 2.1 AND SAS 2.0 CABLE ASSEMBLIES.

PART NUMBER	PORT SIZE	SW	OAW	KEY(S) PORT1	KEY(S) PORT2	KEY(S) PORT3	KEY(S) PORT4	IDENTIFIERS	SCREWS INCLUDED	SCREW LENGTH
1110490307	4	76.30	80.00	2.4	2.4	2.4	2.4	SAS OUT PORT/END DEVICE	NONE	N/A
1110490308	4	76.30	80.00	4.6	4.6	4.6	4.6	SAS IN PORT/END DEVICE	NONE	N/A
1110490309	4	76.30	80.00	4	4	4	4	SAS UNIVERSAL PORT	NONE	N/A

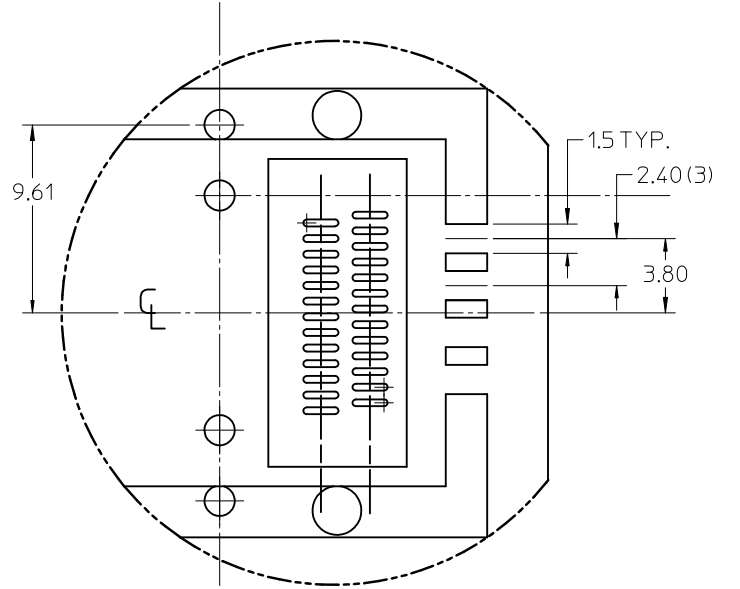
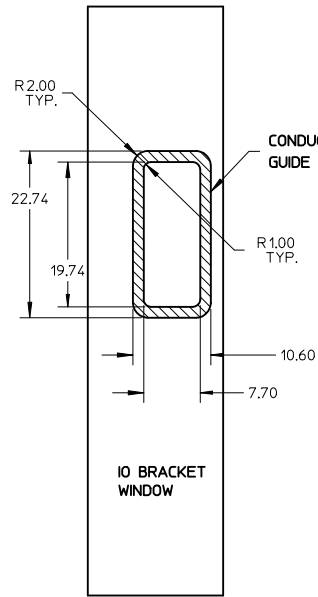
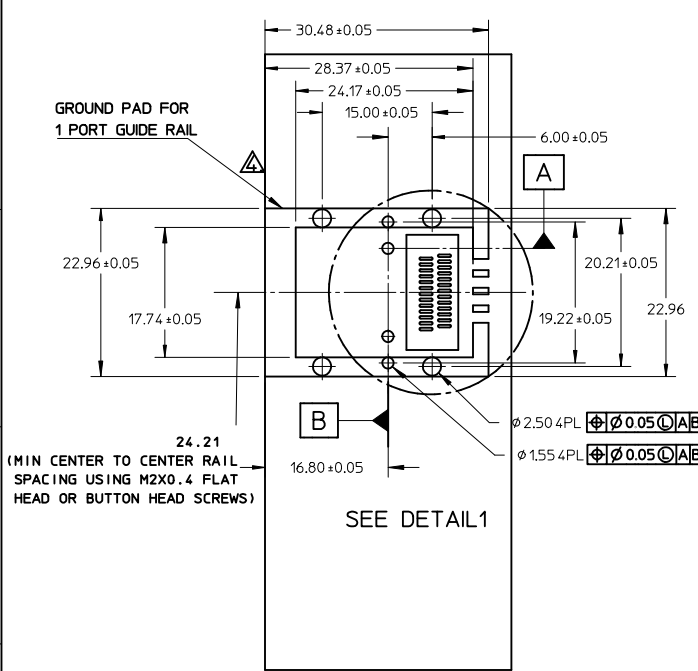


UPDATE P/N CHART IEC NO: USY2012-0469 DRWN:TPRATT 2011/11/03 CHKD:AJOHNSTON 2011/11/03 APPR:RMKHAN 2011/11/15	QUALITY SYMBOLS ▽=0 ▽=0	GENERAL TOLERANCES (UNLESS SPECIFIED) mm INCH		DIMENSION STYLE MM ONLY		SCALE 1:1	DESIGN UNITS METRIC	THIRD ANGLE PROJECTION	
		4 PLACES ± --- ± --- 3 PLACES ± --- ± --- 2 PLACES ± 0.13 ± --- 1 PLACE ± 0.25 ± --- ANGULAR ± 1 °	DRAWN BY BREED	DATE 2009/12/02	TITLE IPASS MINISAS 2.1 26CKT GUIDE HOUSING ASSEMBLY 0 DEGREE, MULTI PORT		MOLEX INCORPORATED		SHEET NO. 1 OF 3
DRAFT WHERE APPLICABLE MUST REMAIN WITHIN DIMENSIONS	MATERIAL NO. SEE TABLE	APPROVED BY DDOYE		DATE 2010/04/21		DOCUMENT NO. SD-111049-030		THIS DRAWING CONTAINS INFORMATION THAT IS PROPRIETARY TO MOLEX INCORPORATED AND SHOULD NOT BE USED WITHOUT WRITTEN PERMISSION	

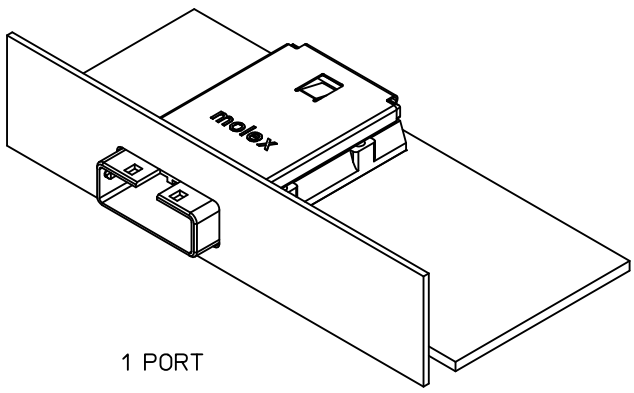


PART NUMBER	PORT SIZE	SW	OAW	KEY(S) PORT1	KEY(S) PORT2	IDENTIFIERS	SCREWS INCLUDED	SCREW LENGTH
1110490304	2	38.26	41.96	2,4	2,4	SAS OUT PORT/END DEVICE	NONE	N/A
1110490305	2	38.26	41.96	4,6	4,6	SAS IN PORT/END DEVICE	NONE	N/A
1110490306	2	38.26	41.96	4	4	SAS UNIVERSAL PORT	NONE	N/A
1110490310	2	38.26	41.96	2,4	4,6	SAS OUT PORT/SAS IN PORT	NONE	N/A
1110490321	2	38.26	41.96	6	6	SAS IN PORT	NONE	N/A

UPDATE P/N CHART EC NO: USY2012-0469 DRWN: PRATT 2011/11/03 CHKD: A JOHNSTON 2011/11/03 APPR: RINKHAN 2011/11/15	DESCRIPTION D	QUALITY SYMBOLS	GENERAL TOLERANCES (UNLESS SPECIFIED)	DIMENSION STYLE	SCALE	DESIGN UNITS	THIRD ANGLE PROJECTION
		▼=0 ▽=0	mm INCH 4 PLACES ± --- ± --- 3 PLACES ± --- ± --- 2 PLACES ± 0.13 ± --- 1 PLACE ± 0.25 ± --- ANGULAR ± 1 °	MM ONLY	1:1	METRIC	
			DRAFT WHERE APPLICABLE MUST REMAIN WITHIN DIMENSIONS	DRAWN BY: BREED DATE: 2009/12/02 CHECKED BY: DDOYE DATE: 2009/12/02 APPROVED BY: DDOYE DATE: 2010/04/21	TITLE IPASS MINISAS 2.1 26CKT GUIDE HOUSING ASSEMBLY 0 DEGREE, MULTI-PORT		
			MATERIAL NO. SEE TABLE	MOLEX INCORPORATED DOCUMENT NO. SD-111049-030	SHEET NO. 2 OF 3		



DETAIL1
SCALE 4:1

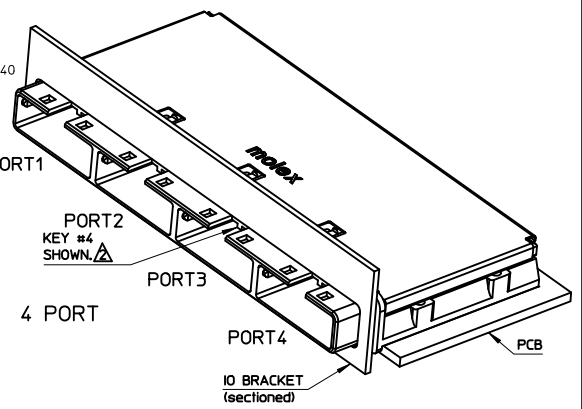
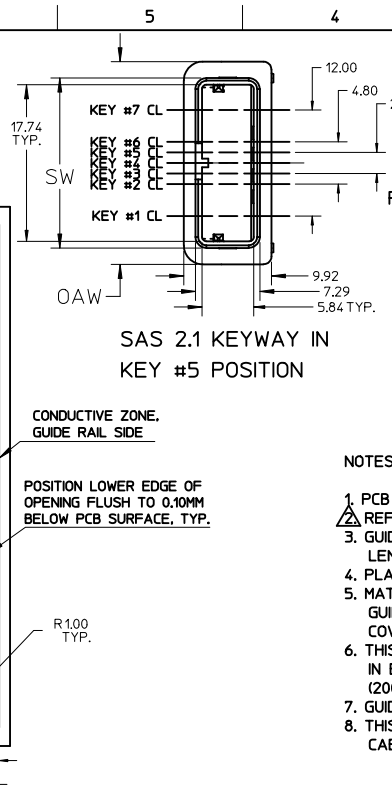
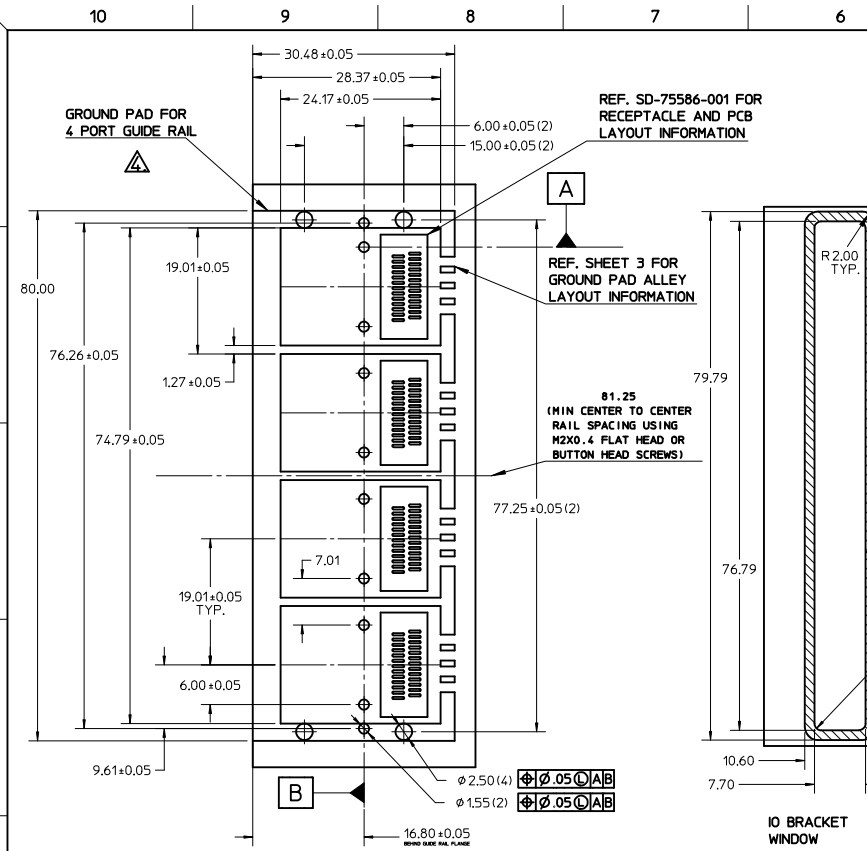


1 PORT

PCB THICKNESS	SCREW LENGTH	TORQUE (IN LBS)
1.6 (.063')	5MM	2.3
2.38 (.093')	6MM	2.3
3.2 (.125')	6MM	2.3
X	+4MM MAX	2.3

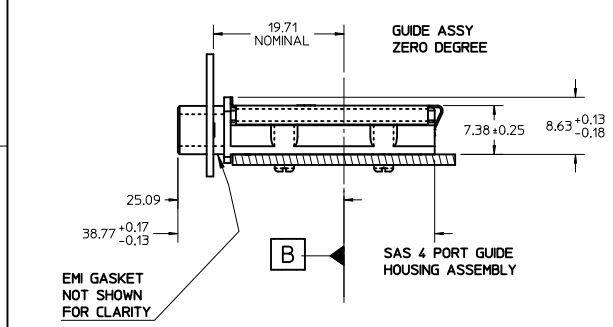
PART NUMBER	PORT SIZE	SW	OAW	KEY(S)	IDENTIFIERS	SCREWS INCLUDED	SCREW LENGTH
1110490301	1	19.24	22.95	2,4	SAS OUT PORT/END DEVICE	NONE	N/A
1110490302	1	19.24	22.95	4,6	SAS IN PORT/END DEVICE	NONE	N/A
1110490303	1	19.24	22.95	4	SAS UNIVERSAL PORT	NONE	N/A
1110490320	1	19.24	22.95	2	SAS OUT PORT	NONE	N/A
1110490303	1	19.24	22.95	4	SAS UNIVERSAL PORT	NONE	N/A
1110490323	1	19.24	22.95	4	SAS UNIVERSAL PORT	74540-0042	6MM

UPDATE P/N CHART EC NO: USY2012-0469 DRWN:TPRATT 2011/11/03 CHKD:AJOHNSTON 2011/11/03 APPR:RKHAN 2011/11/15	QUALITY SYMBOLS ▽=0 ▽=0	GENERAL TOLERANCES (UNLESS SPECIFIED)		DIMENSION STYLE MM ONLY		SCALE 1:1	DESIGN UNITS METRIC	THIRD ANGLE PROJECTION	
		mm		INCH		DRAWN BY BREED	DATE 2009/12/02	TITLE IPASS MINISAS 2.1 26CKT GUIDE HOUSING ASSEMBLY 0 DEGREE, MULTIPORT MOLEX MOLEX INCORPORATED	
		4 PLACES ± --- ± ---		3 PLACES ± --- ± ---		CHECKED BY DDOYE	DATE 2009/12/02		
		2 PLACES ± 0.13 ± ---		1 PLACE ± 0.25 ± ---		APPROVED BY DDOYE	DATE 2010/04/21		
ANGULAR ± 1 °				MATERIAL NO.		DOCUMENT NO. SD-111049-030	SHEET NO. 3 OF 3		
DRAFT WHERE APPLICABLE MUST REMAIN WITHIN DIMENSIONS				SEE TABLE		THIS DRAWING CONTAINS INFORMATION THAT IS PROPRIETARY TO MOLEX INCORPORATED AND SHOULD NOT BE USED WITHOUT WRITTEN PERMISSION			



- NOTES:
1. PCB AND BRACKET SHOWN FOR REFERENCE ONLY.
 2. REF. SD-74547-100 FOR KEY POSITIONS
 3. GUIDE HOUSING MOUNTING THREAD= M2 X 0.40, SEE SHEET 3 FOR SCREW LENGTH + TORQUE SPEC.
 4. PLATE GROUND PAD WITH EMERSION SILVER OR GOLD.
 5. MATERIAL:
GUIDE HOUSING - ZINC DIECAST, NICKEL PLATED
COVER - STAINLESS STEEL
 6. THIS PRODUCT MEETS THE RESTRICTION OF HAZARDOUS SUBSTANCES IN ELECTRICAL AND ELECTRONIC EQUIPMENT (RoHS) DIRECTIVE (2002/95/EC)
 7. GUIDE HOUSING PEGS FOR ALIGNMENT ONLY, DO NOT SOLDER.
 8. THIS GUIDE HOUSING ASSEMBLY IS UNIVERSAL FOR SAS 2.1 AND SAS 2.0 CABLE ASSEMBLIES.

PART NUMBER	PORT SIZE	SW	OAW	KEY(S) PORT1	KEY(S) PORT2	KEY(S) PORT3	KEY(S) PORT4	IDENTIFIERS	SCREWS INCLUDED	SCREW LENGTH
1110490307	4	76.30	80.00	2.4	2.4	2.4	2.4	SAS OUT PORT/END DEVICE	NONE	N/A
1110490308	4	76.30	80.00	4.6	4.6	4.6	4.6	SAS IN PORT/END DEVICE	NONE	N/A
1110490309	4	76.30	80.00	4	4	4	4	SAS UNIVERSAL PORT	NONE	N/A



UPDATE P/N CHART

EC NO: USY2012-0469

DRWN:TPRATT 2011/11/03

CHKD:AJOHNSTON 2011/11/03

APPR:RMKHAH 2011/11/15

DESCRIPTION

QUALITY SYMBOLS

▽=0

▽=0

GENERAL TOLERANCES (UNLESS SPECIFIED)

	mm	INCH
4 PLACES	± ---	± ---
3 PLACES	± ---	± ---
2 PLACES	± 0.13	± ---
1 PLACE	± 0.25	± ---
ANGULAR ± 1 °		

DRAFT WHERE APPLICABLE MUST REMAIN WITHIN DIMENSIONS

DIMENSION STYLE

MM ONLY

SCALE 1:1

DESIGN UNITS METRIC

THIRD ANGLE PROJECTION

TITLE

IPASS MINISAS 2.1 26CKT GUIDE HOUSING ASSEMBLY 0 DEGREE, MULTI PORT

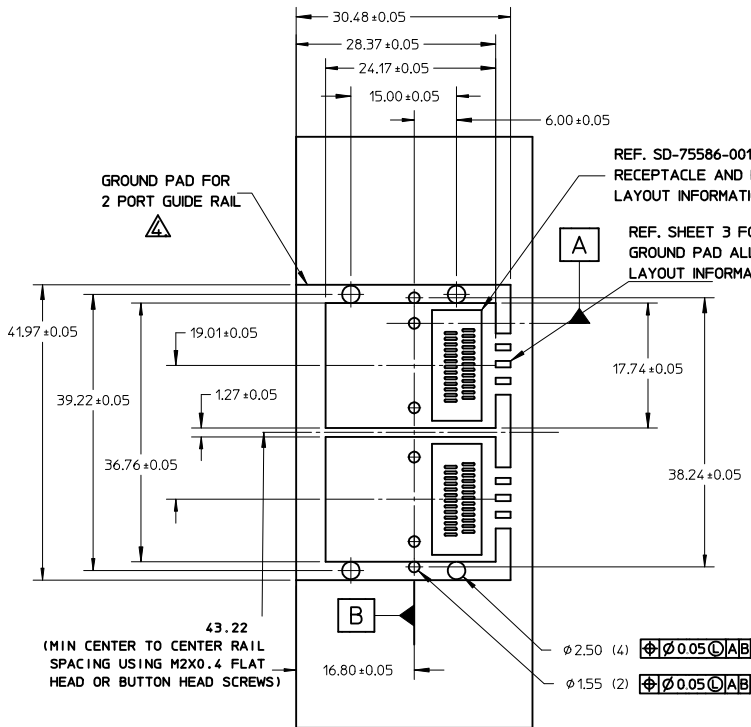
MOLEX INCORPORATED

DOCUMENT NO. SD-111049-030

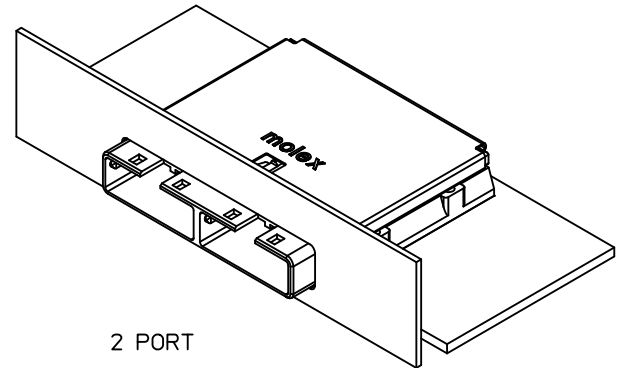
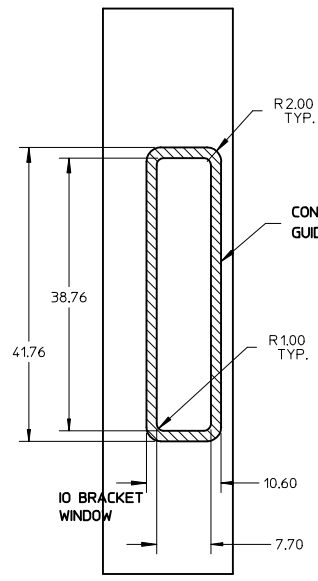
SHEET NO. 1 OF 3

MATERIAL NO. SEE TABLE

THIS DRAWING CONTAINS INFORMATION THAT IS PROPRIETARY TO MOLEX INCORPORATED AND SHOULD NOT BE USED WITHOUT WRITTEN PERMISSION

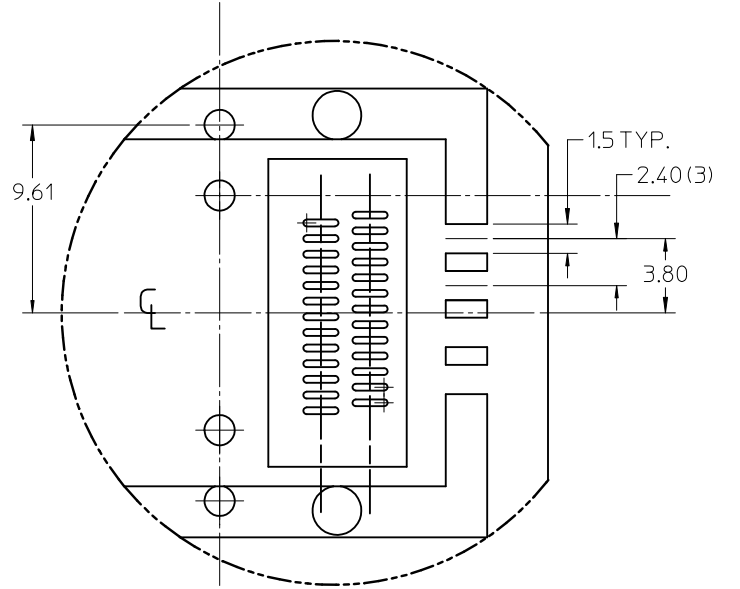
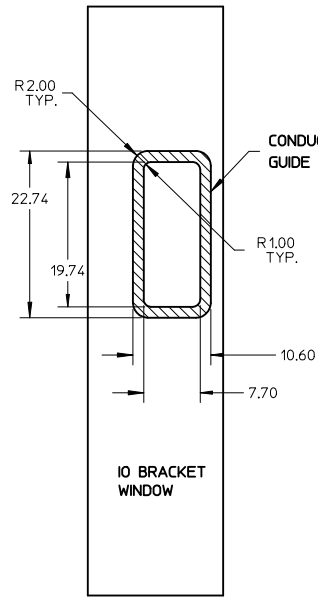
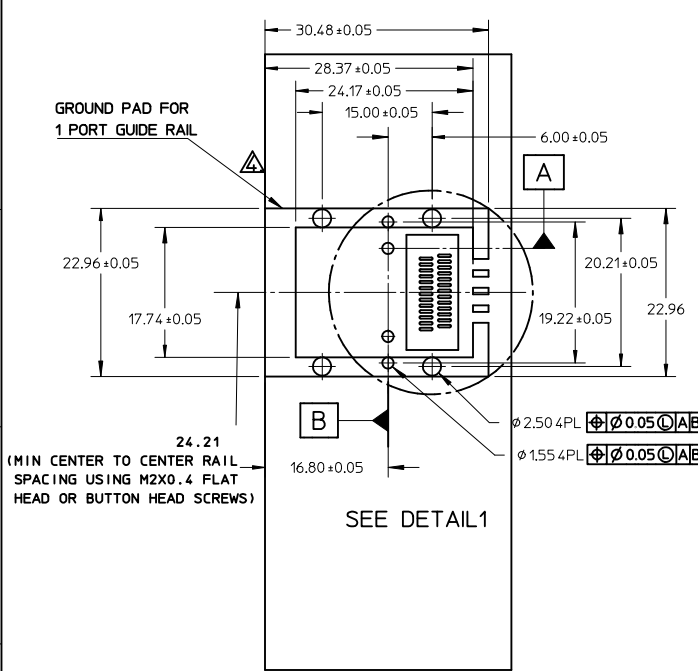


REF. SD-75586-001 FOR RECEPTACLE AND PCB LAYOUT INFORMATION
 REF. SHEET 3 FOR GROUND PAD ALLEY LAYOUT INFORMATION

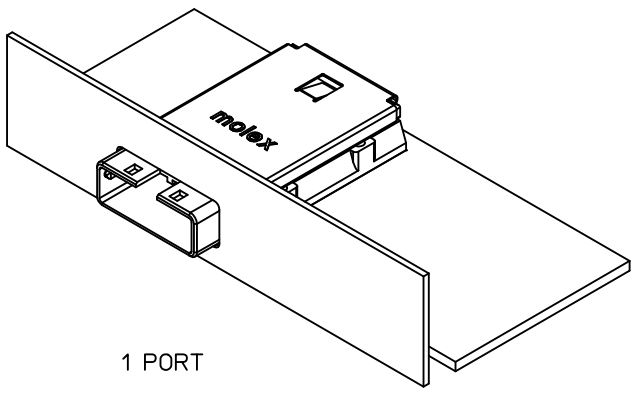


PART NUMBER	PORT SIZE	SW	OAW	KEY(S) PORT1	KEY(S) PORT2	IDENTIFIERS	SCREWS INCLUDED	SCREW LENGTH
1110490304	2	38.26	41.96	2,4	2,4	SAS OUT PORT/END DEVICE	NONE	N/A
1110490305	2	38.26	41.96	4,6	4,6	SAS IN PORT/END DEVICE	NONE	N/A
1110490306	2	38.26	41.96	4	4	SAS UNIVERSAL PORT	NONE	N/A
1110490310	2	38.26	41.96	2,4	4,6	SAS OUT PORT/SAS IN PORT	NONE	N/A
1110490321	2	38.26	41.96	6	6	SAS IN PORT	NONE	N/A

UPDATE P/N CHART EC NO: USY2012-0469 DRWN: PRATT 2011/11/03 CHKD: A JOHNSTON 2011/11/03 APPR: RINKHAN 2011/11/15	DESCRIPTION D	QUALITY SYMBOLS ▽=0 ▽=0	GENERAL TOLERANCES (UNLESS SPECIFIED) mm INCH 4 PLACES ± --- ± --- 3 PLACES ± --- ± --- 2 PLACES ± 0.13 ± --- 1 PLACE ± 0.25 ± --- ANGULAR ± 1 °	DIMENSION STYLE MM ONLY DRAWN BY: BREED DATE: 2009/12/02 CHECKED BY: DDOYE DATE: 2009/12/02 APPROVED BY: DDOYE DATE: 2010/04/21	SCALE 1:1 DESIGN UNITS METRIC THIRD ANGLE PROJECTION	TITLE IPASS MINISAS 2.1 26CKT GUIDE HOUSING ASSEMBLY 0 DEGREE, MULTI-PORT MOLEX INCORPORATED DOCUMENT NO. SD-111049-030 SHEET NO. 2 OF 3
		DRAFT WHERE APPLICABLE MUST REMAIN WITHIN DIMENSIONS	SEE TABLE	THIS DRAWING CONTAINS INFORMATION THAT IS PROPRIETARY TO MOLEX INCORPORATED AND SHOULD NOT BE USED WITHOUT WRITTEN PERMISSION		



DETAIL1
SCALE 4:1



PCB THICKNESS	SCREW LENGTH	TORQUE (IN LBS)
1.6 (.063')	5MM	2.3
2.38 (.093')	6MM	2.3
3.2 (.125')	6MM	2.3
X	+4MM MAX	2.3

PART NUMBER	PORT SIZE	SW	OAW	KEY(S)	IDENTIFIERS	SCREWS INCLUDED	SCREW LENGTH
1110490301	1	19.24	22.95	2,4	SAS OUT PORT/END DEVICE	NONE	N/A
1110490302	1	19.24	22.95	4,6	SAS IN PORT/END DEVICE	NONE	N/A
1110490303	1	19.24	22.95	4	SAS UNIVERSAL PORT	NONE	N/A
1110490320	1	19.24	22.95	2	SAS OUT PORT	NONE	N/A
1110490303	1	19.24	22.95	4	SAS UNIVERSAL PORT	NONE	N/A
1110490323	1	19.24	22.95	4	SAS UNIVERSAL PORT	74540-0042	6MM

UPDATE P/N CHART EC NO: USY2012-0469 DRWN:TPRATT 2011/11/03 CHKD:AJHONSTON 2011/11/03 APPR:RMKHAN 2011/11/15	DESCRIPTION REV	QUALITY SYMBOLS ▽=0 ▽=0	GENERAL TOLERANCES (UNLESS SPECIFIED) mm INCH 4 PLACES ± --- ± --- 3 PLACES ± --- ± --- 2 PLACES ± 0.13 ± --- 1 PLACE ± 0.25 ± --- ANGULAR ± 1°	DIMENSION STYLE MM ONLY DRAWN BY DATE BREED 2009/12/02 CHECKED BY DATE DDOYE 2009/12/02 APPROVED BY DATE DDOYE 2010/04/21	SCALE 1:1 DESIGN UNITS METRIC THIRD ANGLE PROJECTION	TITLE IPASS MINISAS 2.1 26CKT GUIDE HOUSING ASSEMBLY 0 DEGREE, MULTIPORT MOLEX MOLEX INCORPORATED	MATERIAL NO. SEE TABLE	DOCUMENT NO. SD-111049-030	SHEET NO. 3 OF 3		
		DRAFT WHERE APPLICABLE MUST REMAIN WITHIN DIMENSIONS			THIS DRAWING CONTAINS INFORMATION THAT IS PROPRIETARY TO MOLEX INCORPORATED AND SHOULD NOT BE USED WITHOUT WRITTEN PERMISSION						