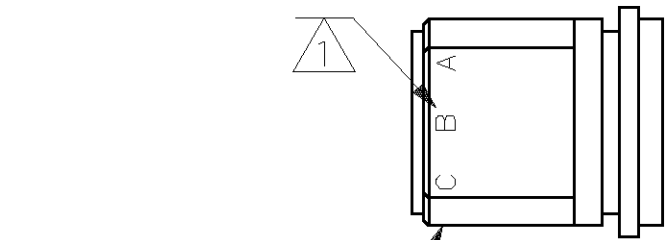


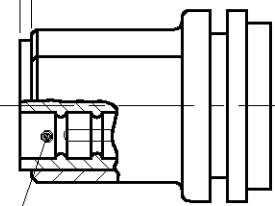
THIS DRAWING IS UNPUBLISHED. RELEASED FOR PUBLICATION, 19  
 © COPYRIGHT 19 BY AMP INCORPORATED. ALL INTERNATIONAL RIGHTS RESERVED.

LOC	DIST	P	F	ZONE	LTR	DESCRIPTION	DATE	APPD
DF	50				A	REV PER 063D-0228-99 CT	4-00	DE

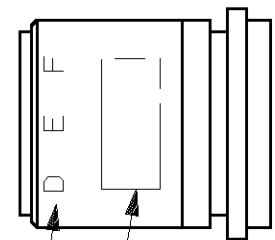


PLUG SHELL  
 MAT'L: POLYESTER  
 MLDG. CMPD.  
 COLOR: BLACK

.030 ± .005

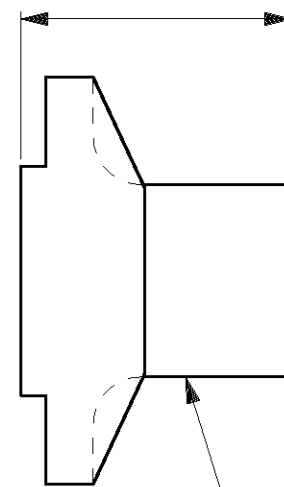


MOLDED SLUG  
 MAT'L: SILICONE RUBBER  
 COLOR: RED

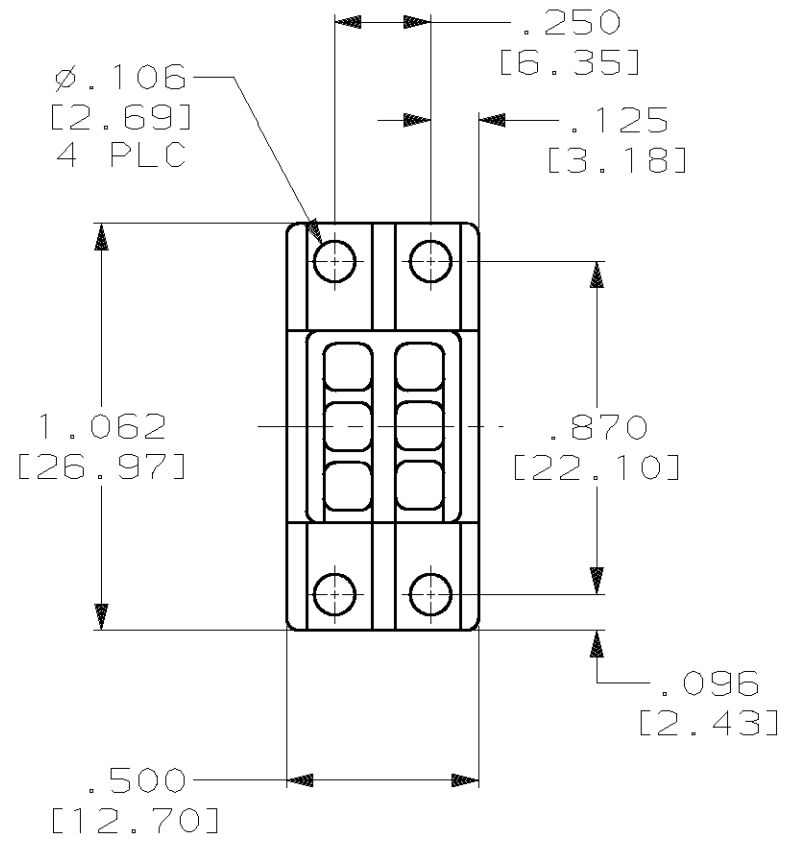


AMP INFORMATION

PIN CONTACT; SIZE #22 (QTY=6)  
 MAT'L: BRONZE PER ASTM-B-140  
 FINISH: GOLD PER MIL-G-45204  
 OVER NICKEL PER QQ-N-290



POTTING SHELL  
 MAT'L: POLYESTER  
 MLDG. CMPD.  
 COLOR: BLACK



1 MARKED PER MIL-STD-130.

THIS DRAWING IS A CONTROLLED DOCUMENT FOR AMP INCORPORATED. IT IS SUBJECT TO CHANGE AND THE CONTROLLING ENGINEERING ORGANIZATION SHOULD BE CONTACTED FOR THE LATEST REVISION.

DO NOT SCALE PRINT. UNLESS SPECIFIED DIMENSIONS IN INCHES [mm]		DR 7-9-92		448479-1	
TOLERANCES ON:		C.C. THOMAS		PART NO	
2 PLC DEC ± -		CHK 7-13-92		AMP INCORPORATED	
3 PLC DEC ± .005 [0.13]		D.EABY		Harrisburg, Pa. 17105	
ANGLES ± -		APPD 7-13-92		NAME	
MATERIAL		D.EABY		SUB MINIATURE PLUG KIT,	
SEE CALLOUT		C.C. THOMAS		HIGH VOLTAGE,	
FINISH		PRODUCT SPEC		6 PIN, RIGHT ANGLE	
SEE CALLOUT		APPLICATION SPEC		SIZE	
		WEIGHT -		B	
				FSCM NO	
				DRAWING NO	
				00779	
				448479	
				SCALE	
				2:1	
				SHEET	
				1 OF 1	

CUSTOMER DRAWING