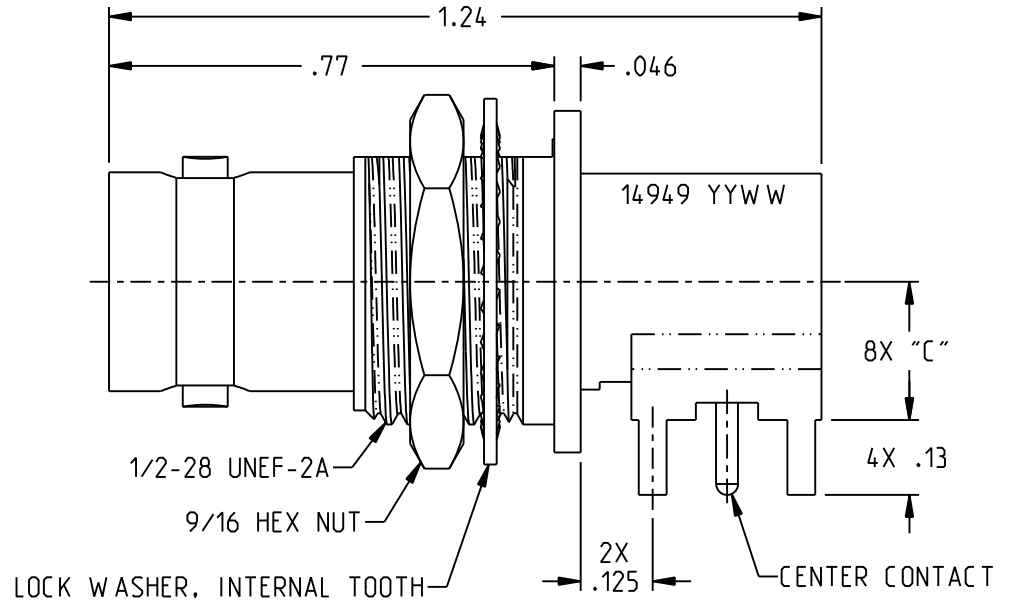
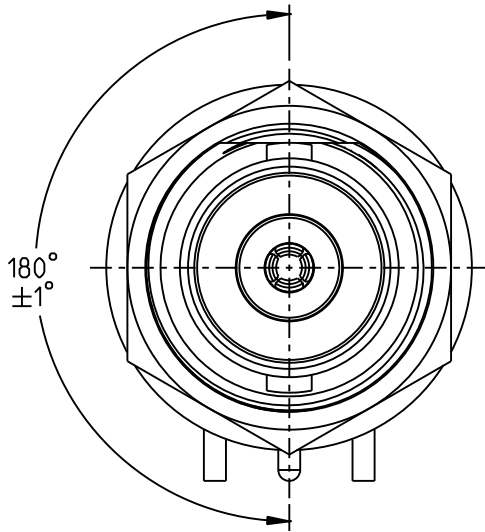


MODEL NUMBER	INTERFACE SPEC	IMPED (OHMS)	Ø "A"	Ø "B"	"C"
CBBJR29	MIL-STD-348, FIG. 301-2	50	.046	.062	.24
UCBBJR29	MIL-STD-348, FIG. 330-1	75	.029		
CBBJR29A	MIL-STD-348, FIG. 301-2	50	.046	.070	.34
UCBBJR29A	MIL-STD-348, FIG. 330-1	75	.029		



NOTES: UNLESS OTHERWISE SPECIFIED.

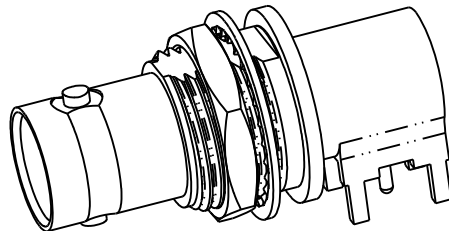
1. MATERIALS AND FINISH:
  - 1.1 BODY: TIN PLATED BRASS
  - 1.2 INSULATOR & DIELECTRIC: PTFE (TEFLON)
  - 1.3 CENTER CONTACT: GOLD PLATED BERYLLIUM COPPER
  - 1.4 MOUNTING HARDWARE: TIN PLATED COPPER ALLOY

2. ELECTRICAL:
  - 2.1 IMPEDANCE: SEE TABLE
  - 2.2 FREQUENCY (MAX): 500 MHz

3. PANEL THICKNESS (MAX): .125

4. PANEL NUT TORQUE (MAX): 35 INCH POUNDS

CBBJR29 SHOWN



<p>RECOMMENDED PANEL CUTOUT</p>	<p>RECOMMENDED MTG HOLE PATTERN</p>
<p>3RD ANGLE PROJECTION</p> <p>RoHS2 <input checked="" type="checkbox"/> 2011/65/EU</p> <p>UNLESS OTHERWISE SPECIFIED UNITS: INCH</p> <p>.XX ±.02 .XXX ±.010 ANGLES ±2°</p> <p>INTERPRET DRAWING IN ACCORDANCE WITH ASME Y14.5-2009.</p>	<p><b>TROMPETER</b></p> <p>Title: BNC BULKHEAD JACK, RIGHT ANGLE PCB MOUNT</p> <p>Model No. XCBBJR29X</p> <p>Size A DO NOT SCALE DRAWING Date: 8/19/2021 Sheet 1 OF 1</p>