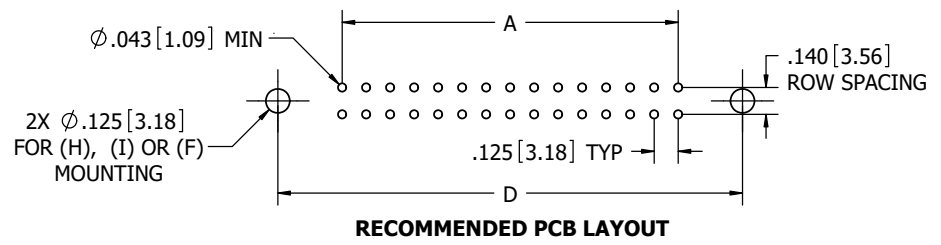
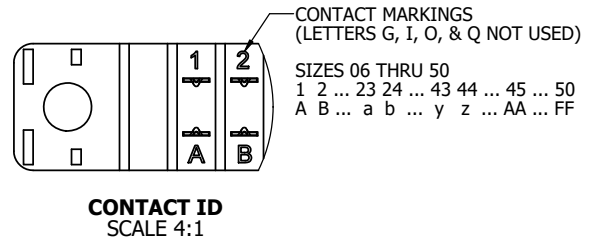
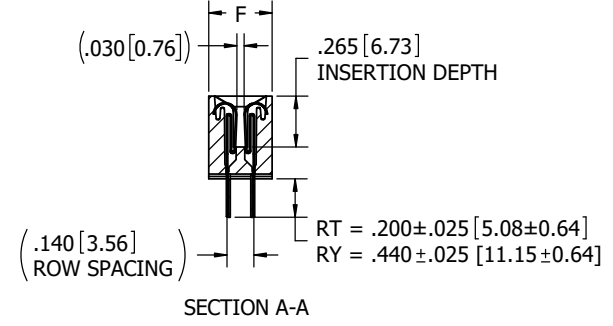
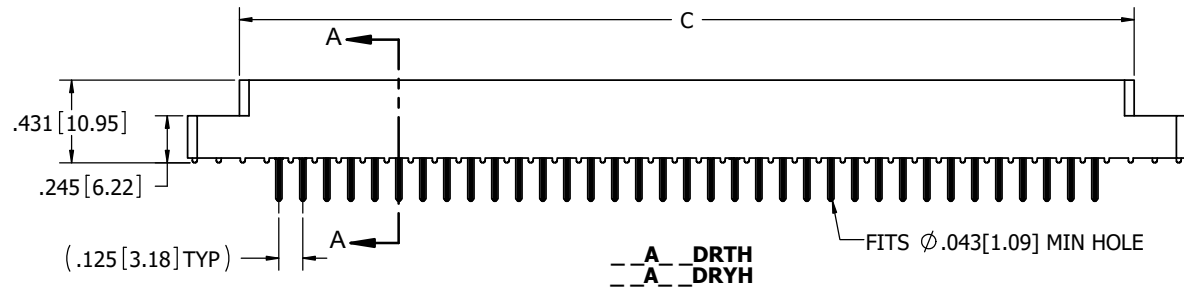
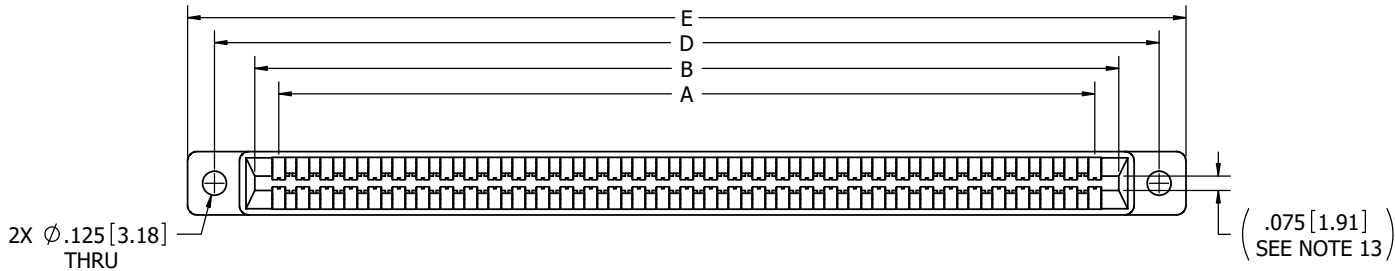


REVISIONS				
REV.	ECO. NO	DESCRIPTION	DATE	BY
A	2301	INITIAL RELEASE	03/22/2011	JH
B	2978	ADD 'B' MOUNTING STYLE	5/22/2014	JHSU
C	4602	ADD 'F' MATERIAL 'C' & 'W' MATERIAL FOR RY TERMINATION ONLY	12/06/2022	MM



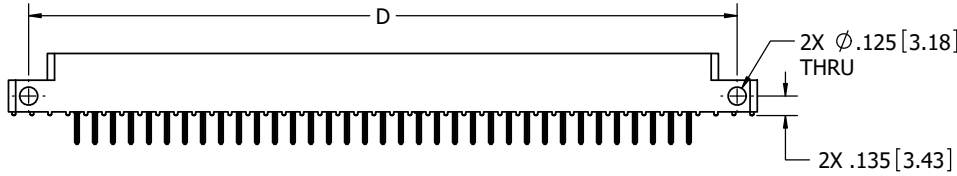
- NOTES:
- INSULATOR MATERIAL: SEE PART NUMBER CODING
 - CONTACT MATERIAL: SEE PART NUMBER CODING
 - PLATING: SEE PART NUMBER CODING
 - OPERATING TEMPERATURE: SEE PART NUMBER CODING
 - PROCESSING TEMP: SEE PART NUMBER CODING
 - UL FLAMMABILITY RATING: 94V-0
 - OPERATING VOLTAGE: 750 VAC
 - CURRENT RATING: 3 AMP
 - CONTACT RESISTANCE: 30 MILLI OHMS MAX
 - INSULATION RESISTANCE: 5000 MEGA OHMS
 - DURABILITY: 500 CYCLES MINIMUM
 - CONNECTOR IDENTIFICATION: THE PART SHALL BE MARKED WITH A PART NUMBER AND LOT CODE
 - BOARD THICKNESS ACCOMMODATED: $.062 \pm .008 [1.57 \pm 0.20]$
 - INSERTION FORCE: 16 OZ MAX PER CONTACT PAIR WHEN USING A $.062 [1.57]$ TEST BLADE
INTERNAL INSPECTION TO BE PER SULLIN'S WORK INSTRUCTION WI-8.6-03
 - WITHDRAWAL FORCE: 1 OZ MIN PER CONTACT PAIR USING $.062 [1.57]$ TEST BLADE
 - MODIFICATION: SEE PART NUMBER CODING



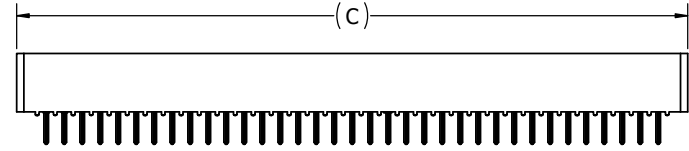
RoHS COMPLIANT

CUSTOMER COPY

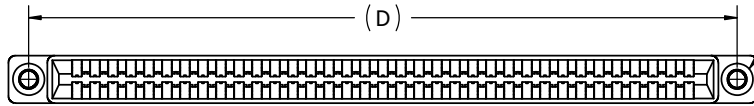
UNLESS OTHERWISE SPECIFIED: DIMENSIONS ARE IN INCHES [MM]		DRAWN	DATE	NAME									
TOLERANCES: ANGULAR: $\pm 30'$ $.XX = \pm .02 [5]$ $.XXX = \pm .005 [13]$ $.XXXX = \pm .0005 [013]$			3/21/11	JH									
<small>THE INFORMATION HEREIN CONTAINS PROPRIETARY INFORMATION OF SULLINS ELECTRONICS AND IS NOT TO BE REPRODUCED, USED OR DISCLOSED TO OTHERS FOR ANY PURPOSE EXCEPT AS SPECIFICALLY AUTHORIZED IN WRITING BY AN OFFICER OF SULLINS ELECTRONICS.</small>					TITLE								
INTERPRET DIMENSIONS AND TOLERANCING PER: ASME Y14.5M-2009					EDGECARD, .125 CC, .LP								
PART NUMBER					<table border="1"> <tr> <td>SIZE</td> <td>CAGE CODE</td> <td>DWG. NO.</td> <td>REV</td> </tr> <tr> <td>C</td> <td>54453</td> <td>C11650</td> <td>C</td> </tr> </table>	SIZE	CAGE CODE	DWG. NO.	REV	C	54453	C11650	C
SIZE	CAGE CODE	DWG. NO.	REV										
C	54453	C11650	C										
SCALE: 2:1					SHEET 1 OF 3								



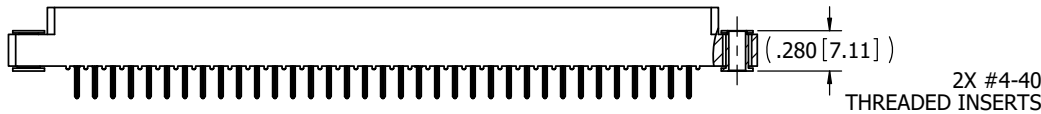
-- A -- DRTS
-- A -- DRYs



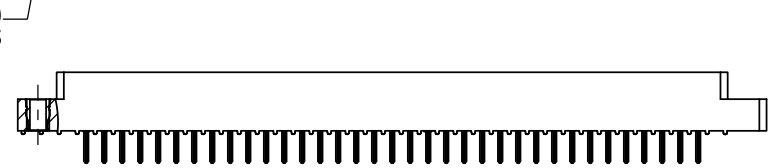
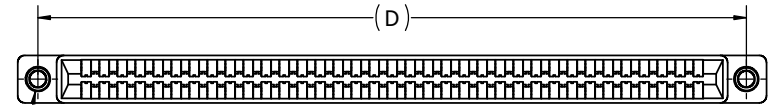
-- A -- DRTN
-- A -- DRYn



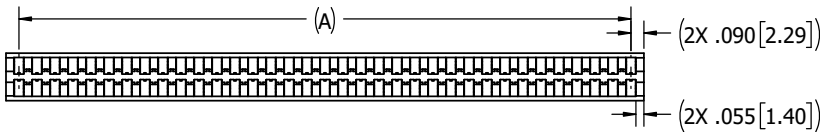
2X FLOATING BOBBIN
Ø.116 [2.95] CLEARANCE
FOR #4 SCREW



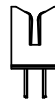
-- A -- DRTF
-- A -- DRYf



-- A -- DRTI
-- A -- DRYi

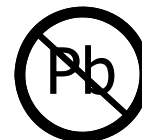


$L \pm .015 [\pm 0.38]$
(L = DIM 'A' + .180 [4.57])



-- A -- DRTB
-- A -- DRYb

CUSTOMER COPY

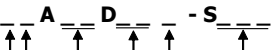


RoHS COMPLIANT

UNLESS OTHERWISE SPECIFIED: DIMENSIONS ARE IN INCHES (MM)		DRAWN	DATE	NAME	
TOLERANCES: ANGULAR: ± 30° .XX = ± .02 [5] .XXX = ± .005 [13] .XXXX = ± .0005 [013]		JH	3/21/11	JH	
INTERPRET DIMENSIONS AND TOLERANCING PER: ASME Y14.5M-2009		THE INFORMATION HEREIN CONTAINS PROPRIETARY INFORMATION OF SULLINS ELECTRONICS AND IS NOT TO BE REPRODUCED, USED OR DISCLOSED TO OTHERS FOR ANY PURPOSE EXCEPT AS SPECIFICALLY AUTHORIZED IN WRITING BY AN OFFICER OF SULLINS ELECTRONICS.			TITLE EDGE CARD, .125 CC, .LP
		PART NUMBER -- A -- DRT (RY) (-S38, -S81, -S328)			SIZE C 54453
		DWG. NO. C11650			REV C
		SCALE: 1.5:1			SHEET 2 OF 3

PART NUMBER	POSITIONS/ CONTACTS	A±.008 [0.20]		B±.008 [0.20]		C±.015 [0.38]		D±.010 [0.25]		E±.020 [0.51]		F±.005 [0.13]	
		INCH	MM	INCH	MM	INCH	MM	INCH	MM	INCH	MM	INCH	MM
A06DRT (RY)	6/12	0.625	15.88	0.875	22.23	1.035	26.29	1.295	32.89	1.575	40.01	0.330	8.38
A10DRT (RY)	10/20	1.125	28.58	1.375	34.93	1.535	38.99	1.795	45.59	2.075	52.71		
A14DRT (RY)	14/28	1.625	41.28	1.875	47.63	2.035	51.69	2.295	58.29	2.575	65.41		
A15DRT (RY)	15/30	1.750	44.45	2.000	50.80	2.160	54.86	2.420	61.47	2.700	68.58		
A18DRT (RY)	18/36	2.125	53.98	2.375	60.33	2.535	64.39	2.795	70.99	3.075	78.11		
A22DRT (RY)	22/44	2.625	66.68	2.875	73.03	3.035	77.09	3.295	83.69	3.575	90.81		
A28DRT (RY)	28/56	3.375	85.73	3.625	92.08	3.785	96.14	4.045	102.74	4.325	109.86		
A30DRT (RY)	30/60	3.625	92.08	3.875	98.43	4.035	102.49	4.295	109.09	4.575	116.21		
A31DRT (RY)	31/62	3.750	95.25	4.000	101.60	4.160	105.66	4.420	112.27	4.700	119.38		
A35DRT (RY)	35/70	4.250	107.95	4.500	114.30	4.660	118.36	4.920	124.97	5.200	132.08		
A36DRT (RY)	36/72	4.375	111.13	4.625	117.48	4.785	121.54	5.045	128.14	5.325	135.26		
A37DRT (RY)	37/74	4.500	114.30	4.750	120.65	4.910	124.71	5.170	131.32	5.450	138.43		
A40DRT (RY)	40/80	4.875	123.83	5.125	130.18	5.285	134.24	5.545	140.84	5.825	147.96		
A43DRT (RY)	43/86	5.250	133.35	5.500	139.70	5.660	143.76	5.920	150.37	6.200	157.48		
A44DRT (RY)	44/88	5.375	136.53	5.625	142.88	5.785	146.94	6.045	153.54	6.325	160.66		
A49DRT (RY)	49/98	6.000	152.40	6.250	158.75	6.410	162.81	6.670	169.42	6.950	176.53		
A50DRT (RY)	50/100	6.125	155.58	6.375	161.93	6.535	165.99	6.795	172.59	7.075	179.71		

PART NUMBER CODING



MATERIAL (INSULATOR/CONTACT)

- E = BLUE PBT/PHOSPHOR BRONZE**
OPERATING TEMP: -65°C TO +125°C
PROCESSING TEMP: WAVE/MANUAL ONLY
 - R = GREEN PPS/PHOSPHOR BRONZE**
OPERATING TEMP: -65°C TO +125°C
PROCESSING TEMP: 260°C MAX FOR 20 SECONDS
 - G = BLACK PA9T/PHOSPHOR BRONZE**
OPERATING TEMP: -65°C TO +125°C
PROCESSING TEMP: 260°C MAX FOR 20 SECONDS
 - H = BLUE PBT/BERYLLIUM COPPER**
OPERATING TEMP: -65°C TO +125°C
PROCESSING TEMP: WAVE/MANUAL ONLY
 - A = GREEN PPS/BERYLLIUM COPPER**
OPERATING TEMP: -65°C TO +150°C
PROCESSING TEMP: 260°C MAX FOR 20 SECONDS
 - J = BLACK PA9T/BERYLLIUM COPPER**
OPERATING TEMP: -65°C TO +150°C
PROCESSING TEMP: 260°C MAX FOR 20 SECONDS
 - F = GREEN PPS/SPINODAL**
OPERATING TEMP: -65°C TO +200°C
PROCESSING TEMP: 260°C MAX FOR 20 SECONDS
AVAILABLE IN OVERALL GOLD PLATING (S OR M) ONLY
(CONSULT FACTORY FOR SPECIAL SOLDERING GUIDELINES)
 - *C = GREEN PPS/BERYLLIUM NICKLE**
OPERATING TEMP: -65°C TO +200°C
PROCESSING TEMP: 260°C MAX FOR 20 SECONDS
AVAILABLE IN OVERALL GOLD PLATING (S OR M) ONLY
 - *W = TAN PEEK/BERYLLIUM NICKLE**
OPERATING TEMP: -65°C TO +250°C
PROCESSING TEMP: 260°C MAX FOR 20 SECONDS
AVAILABLE IN OVERALL GOLD PLATING (M) ONLY
(CONSULT FACTORY FOR OTHER MATERIALS)
- * FOR RY TERMINATION ONLY

MODIFICATION

- OMIT FOR STANDARD, EX: 'EBA22DRTH'
- S38 = BLACK PBT (MATERIAL CODES E AND H ONLY)
- S81 = GREEN PBT (MATERIAL CODES E AND H ONLY)
- S328 = BROWN PPS (MATERIAL CODES R AND A ONLY)

MOUNTING STYLE

- H = .125" DIA. CLEARANCE HOLES (PAGE 1)
- N = NO MOUNTING EARS (PAGE 2)
- S = .125" DIA. SIDE MOUNTING (PAGE 2)
- I = #4-40 THREADED INSERT (PAGE 2)
- F = FLOATING BOBBIN (PAGE 2)
- B = OPEN CARD SLOT (PAGE 2)

TERMINATION TYPE

- RT = .200" TAIL LENGTH
 - RY = .440" TAIL LENGTH
- (SEE SECTION A-A ON SHEET 1 FOR DETAILS)

NUMBER OF POSITIONS

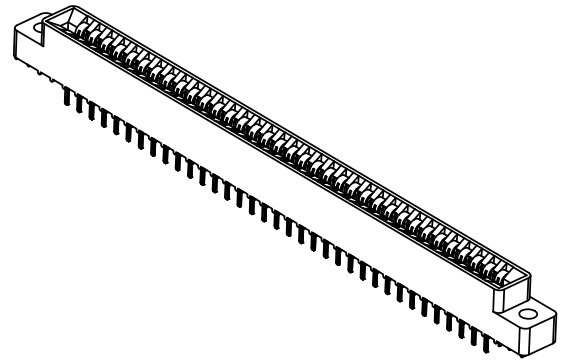
(CONTACTS PER ROW)

PLATING

ALL PLATINGS ARE LEAD FREE AND HAVE .000050" NICKEL UNDERPLATE

- | CONTACT SURFACE | TERMINATION |
|---|--------------------------|
| B = .000010" GOLD | .000100" PURE TIN, MATTE |
| C = .000030" GOLD | .000100" PURE TIN, MATTE |
| G = .000010" GOLD | .000005" GOLD |
| Y = .000030" GOLD | .000005" GOLD |
| **E = .000100" PURE TIN, MATTE, OVERALL | |
| S = .000010" GOLD OVERALL | |
| M = .000030" GOLD | .000010" GOLD OVERALL |

** OVERALL TIN ONLY AVAILABLE ON MATERIAL CODES E, R AND G



RoHS COMPLIANT

CUSTOMER COPY

UNLESS OTHERWISE SPECIFIED: DIMENSIONS ARE IN INCHES (MM)		DRAWN	DATE	NAME	
TOLERANCES: ANGULAR: ± 30° XX= ± .02 [5] XXX= ± .005 [13] XXXX= ± .0005 [013]			3/21/11	JH	
INTERPRET DIMENSIONS AND TOLERANCING PER: ASME Y14.5M-2009		<small>THE INFORMATION HEREIN CONTAINS PROPRIETARY INFORMATION OF SULLINS ELECTRONICS AND IS NOT TO BE REPRODUCED, USED OR DISCLOSED TO OTHERS FOR ANY PURPOSE EXCEPT AS SPECIFICALLY AUTHORIZED IN WRITING BY AN OFFICER OF SULLINS ELECTRONICS.</small>			TITLE
					EDGECARD, .125 CC, .LP
		PART NUMBER			A DRT (RY) (-S38, -S81, -S328)
SIZE	CAGE CODE	DWG. NO.	REV		
C	54453		C		
SCALE: 1.5:1		SHEET 3 OF 3			