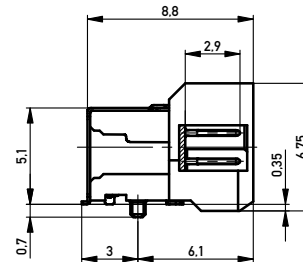
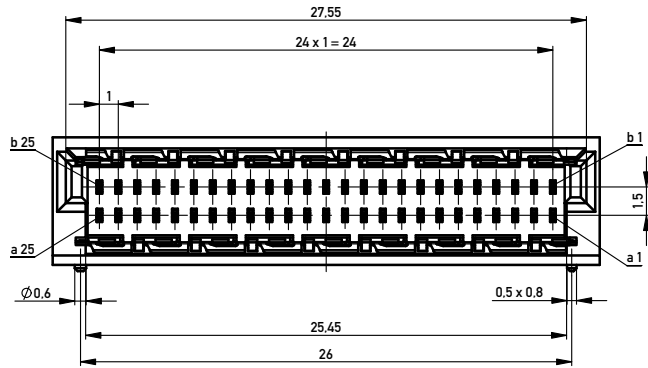
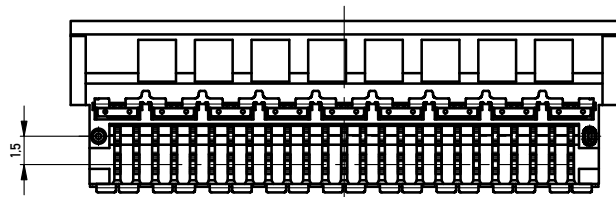
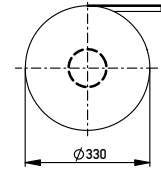
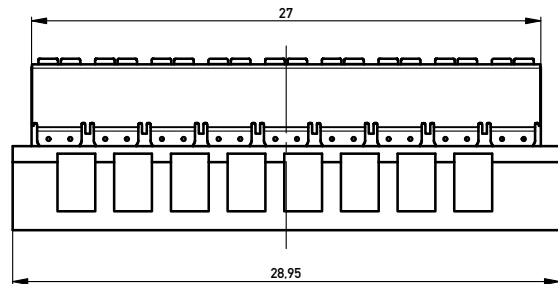
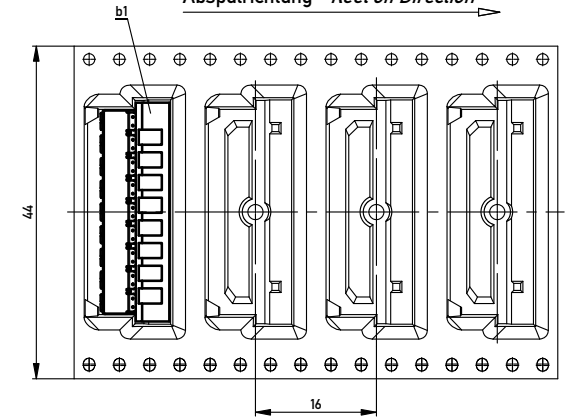


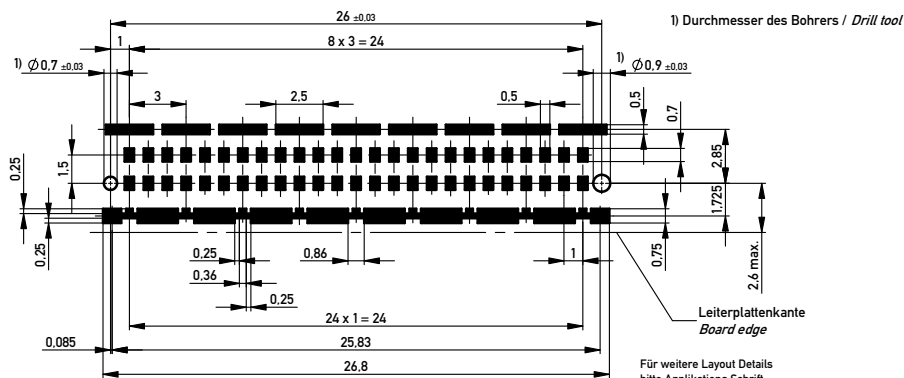
Verpackt im Gurt in Anlehnung an DIN IEC 60286-3
 Tape on Reel Packaging according to DIN IEC 60286-3
 Verpackungseinheit: 400 Stück
 Packaging unit: 400 pcs



Abspulrichtung - Reel off Direction



Leiterplatten-Layout Vorschlag / PCB-layout proposal



Für weitere Layout Details bitte Applikations Schrift MicroSpeed beachten.
 For further layout details please consider MicroSpeed application note.

Anforderungsstufe 1
 Performance Level 1

Kontaktbereich vergoldet
 Mating Area gold plating

Anschlussbereich verzinkt 4-6 µm
 Terminal Area 4-6 µm tin plating

Koplanarität der Anschlüsse ≤ 0.1 mm
 Coplanarity Area of Termination ≤ 0.1 mm

Information:	Tolerances		Scale: 5:1
All rights reserved. Only for Information. To ensure that this is the latest version of this drawing, please contact one of the ERNI companies before using.	Subject to modification without prior notice. Drawing will not be updated.	All Dimensions in mm	Designation
h	24.05.2015	ERNI	Messertl. 90° 50p SMD BM EMV
Index	Date	www.ERNI.com	Male 90° 50 cont SMD BM EMV
		284332	I
		Class MSPEED	A2

Copyright by ERNI Production GmbH & Co. KG
 Proprietary notice pursuant to §90 100ff. to be observed