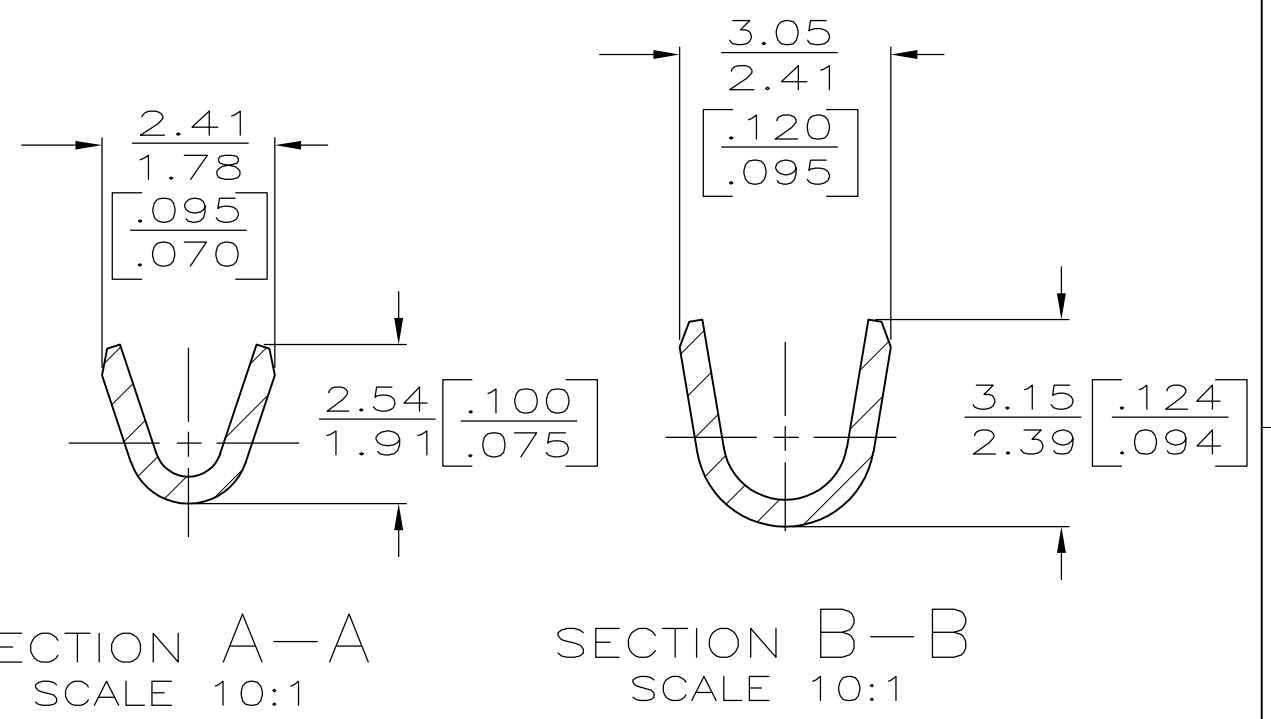
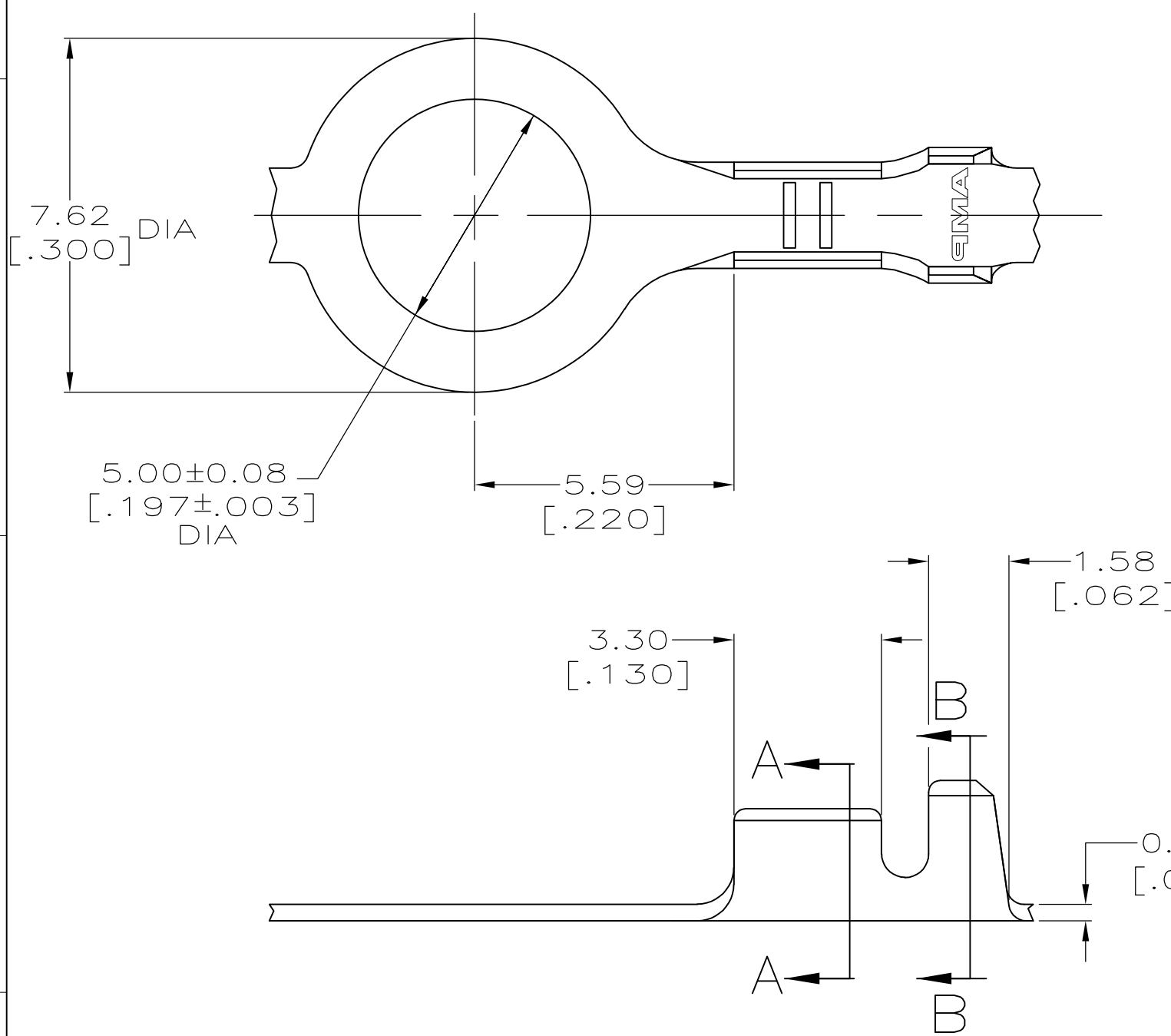


THIS DRAWING IS UNPUBLISHED. RELEASED FOR PUBLICATION
 © COPYRIGHT - By - ALL RIGHTS RESERVED.

REVISIONS					
P	LTR	DESCRIPTION	DATE	DWN	APVD
F1		REVISED PER ECR-09-000368	20JAN09	HMR	DD
F2		REVISED PER ECR-16-012480	06SEP16	ST	TD

- 1 CONTINUOUS STRIP ON REEL.
- 2 0.002032 [.000080] MIN TIN PLATE PER MIL-T-10727.



OBSOLETE	---	1.22-1.98 DIA	60555-2
	2	[.048-.078]	60555-1
FINISH	INSULATION RANGE	WIRE RANGE	PART NO.

0	.090	2.29	4.32	F	2.03	1.40 [.055]	0.6mm ² [20]
F	.010	[.090]	[.170]		1.35 [.053]	0.3mm ² [22]	
					1.27 [.050]	0.2mm ² [24]	
TYPE	WIDTH	STRIP LENGTH ±0.38 [±.015]	TYPE	WIDTH	±0.051 [±.002] HEIGHT	WIRE	
INSUL BARREL CRIMP			WIRE BARREL CRIMP				

THIS DRAWING IS A CONTROLLED DOCUMENT.

DIMENSIONS: INCHES

TOLERANCES UNLESS OTHERWISE SPECIFIED:

0 PLC	± -
1 PLC	± -
2 PLC	± 0.25 [.010]
3 PLC	± -
4 PLC	± -
ANGLES	± -

MATERIAL: 082 BRASS

FINISH: SEE TABLE

STE TE Connectivity

RING

PHILLIP M FORTNEY 6/9/94
 JEFF RUTH 6/9/94

APVD: GARY YETTER 6/9/94
 RON KUZO 6/9/94

PRODUCT SPEC: RING

APPLICATION SPEC: RING

WEIGHT: 0.000000

SIZE: A3 CAGE CODE: 00779 DRAWING NO: C-60555

CUSTOMER DRAWING

SCALE: 8:1 SHEET: 1 OF 1 REV: F2