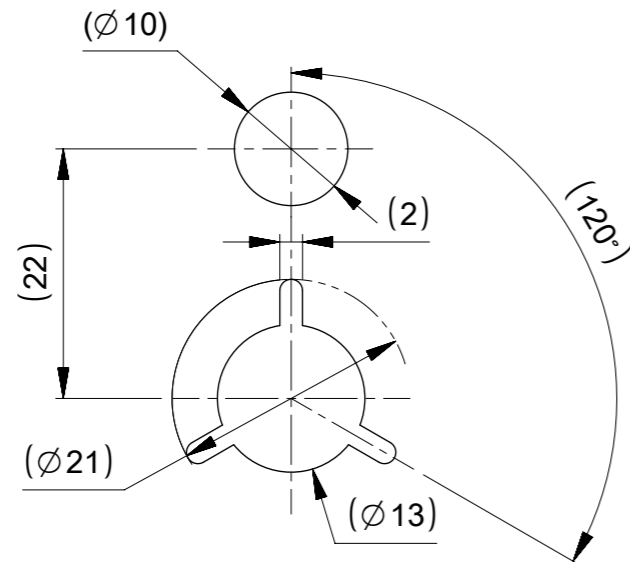
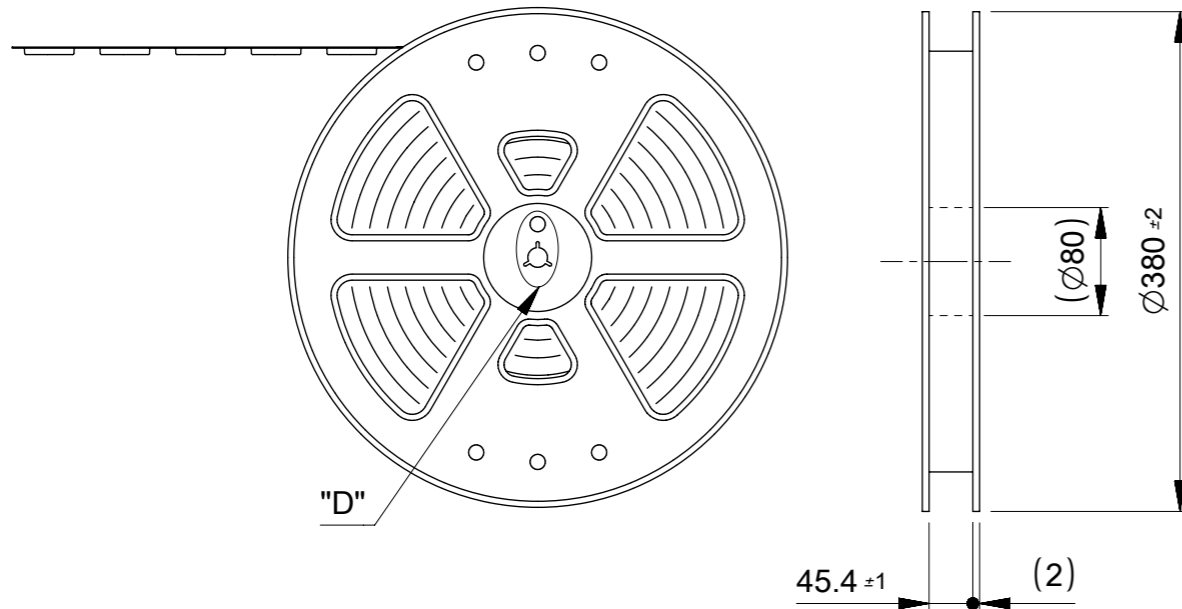


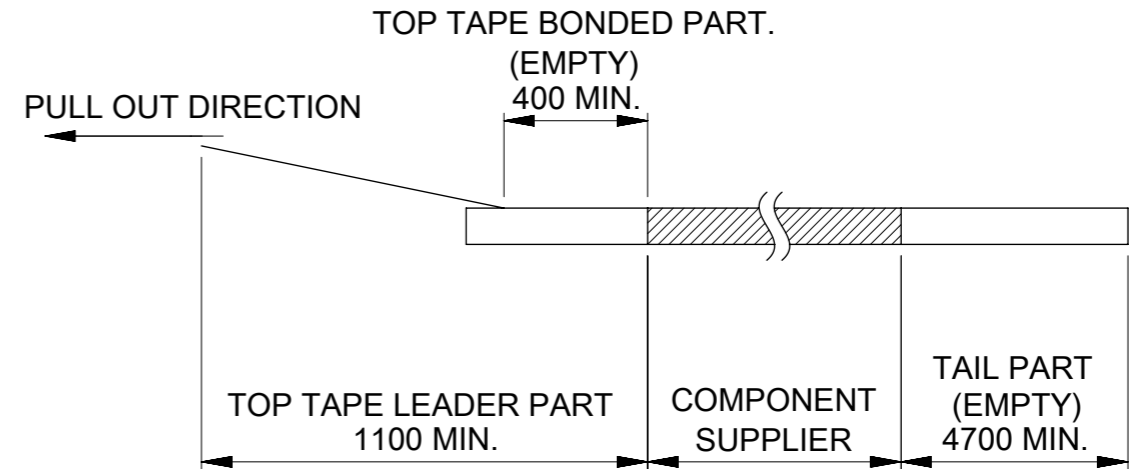
PULL OUT DIRECTION



DETAIL "D"

NOTES

1. NUMBER OF CONNECTORS :1000 PCS/REEL
2. LEAD TAPE LENGTH.



3. MATERIAL

CARRIER TAPE: POLYSTYRENE

TOP TAPE: PET, PE, OTHER

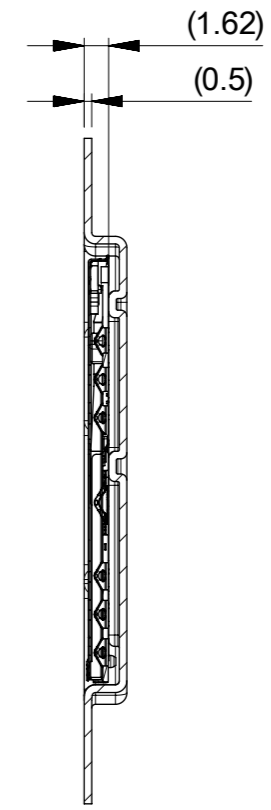
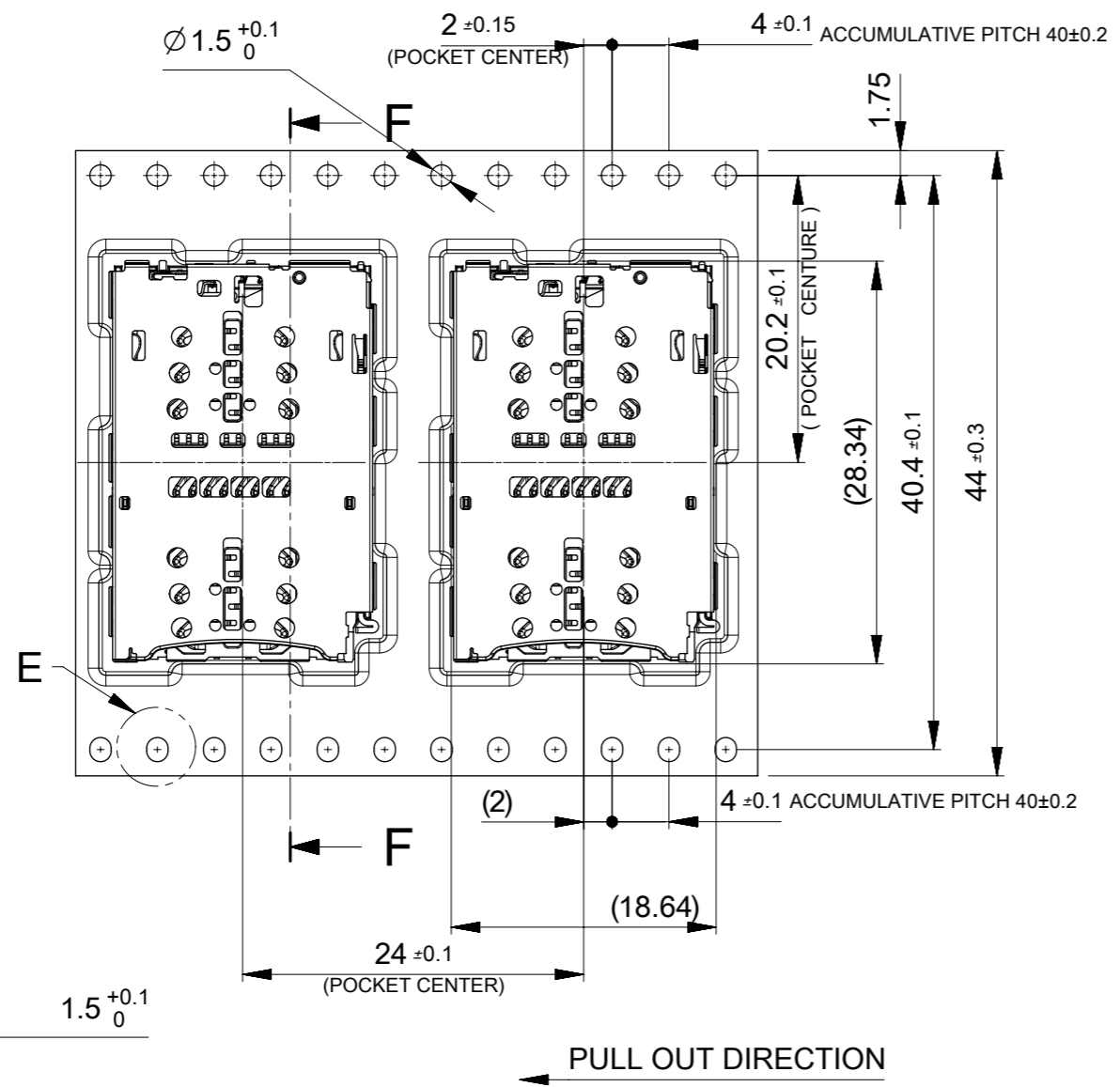
REEL: POLYSTYRENE(PS)<RECYCLE MATERIAL CONTAINED>

5056032092	6+6+8
EMBOSSED PACKAGE	極数
オーダー番号 ORDER NO	CIRCUITS
CONNECTOR SERIES No.5056032021	

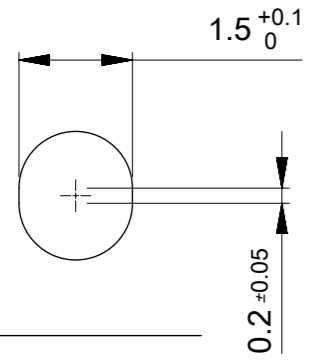
THIS DRAWING CONTAINS INFORMATION THAT IS PROPRIETARY TO MOLEX ELECTRONIC TECHNOLOGIES, LLC AND SHOULD NOT BE USED WITHOUT WRITTEN PERMISSION

EC NO: 107253 DRWN: STANAKA02 CHK'D: SMARUYAMA APPR: TKUSUHARA01	2016/07/05 2016/09/06 2016/09/06	GENERAL TOLERANCES (UNLESS SPECIFIED) ANGULAR TOL ± 1.0 ° 4 PLACES ± 0.3 3 PLACES ± 0.3 2 PLACES ± 0.3 1 PLACE ± 0.3 0 PLACES ± 0.3 DRAFT WHERE APPLICABLE MUST REMAIN WITHIN DIMENSIONS	DIMENSION UNITS	SCALE		
			MM	5:1		
	DRWN BY		DATE	STANAKA02		2016/07/05
	CHK'D BY		DATE	SMARUYAMA		2016/09/06
			APPR BY	DATE	TKUSUHARA01	2016/09/06
			DRAWING SIZE	THIRD ANGLE PROJECTION	PRODUCT CUSTOMER DRAWING	
			A3		SERIES	MATERIAL NUMBER
					505603	SEE TABLE IN SHEET 1
					CUSTOMER	GENERAL
					DOCUMENT NUMBER	DOC TYPE
					5056030000	PSD
					DOC PART	SHEET NUMBER
					000	1 OF 2

3IN2 BAR-PUSH H=1.35 FULL ANTICRUSH TYPE ASSY (DUAL NSIM / NSIM+MSD)



SECTION F-F

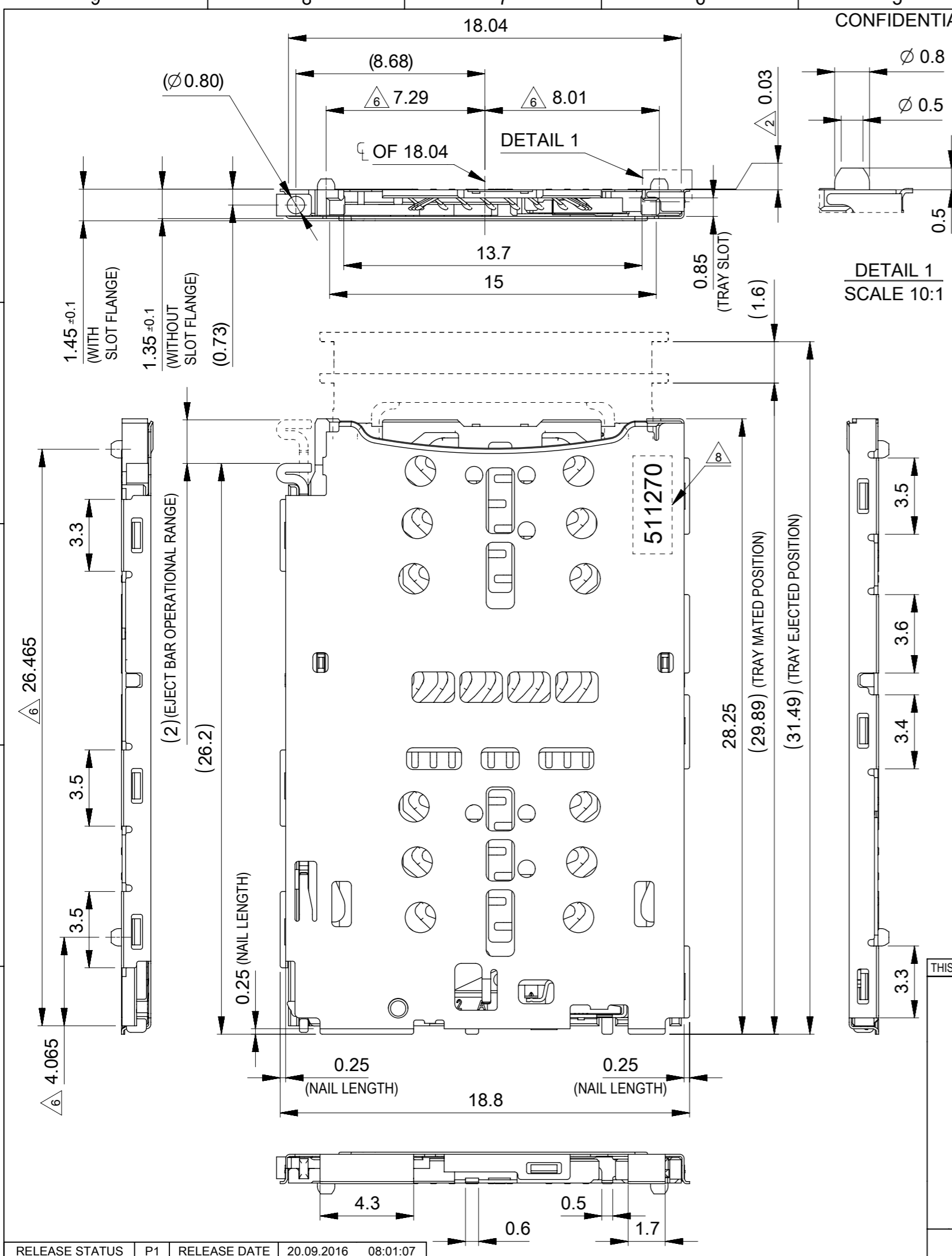


DETAIL E  
SCALE 10:1

PULL OUT DIRECTION

THIS DRAWING CONTAINS INFORMATION THAT IS PROPRIETARY TO MOLEX ELECTRONIC TECHNOLOGIES, LLC AND SHOULD NOT BE USED WITHOUT WRITTEN PERMISSION

EC NO: 107253 DRWN: STANAKA02 CHK'D: SMARUYAMA APPR: TKUSUHARA01	2016/07/05 2016/09/06 2016/09/06	GENERAL TOLERANCES (UNLESS SPECIFIED) ANGULAR TOL ± 1.0 ° 4 PLACES ± 0.3 3 PLACES ± 0.3 2 PLACES ± 0.3 1 PLACE ± 0.3 0 PLACES ± 0.3	DIMENSION UNITS	SCALE			
			MM	2:1			
			DRWN BY	DATE		STANAKA02	2016/07/05
			CHK'D BY	DATE		SMARUYAMA	2016/09/06
			APPR BY	DATE		TKUSUHARA01	2016/09/06
		DRAFT WHERE APPLICABLE MUST REMAIN WITHIN DIMENSIONS	DRAWING SIZE	THIRD ANGLE PROJECTION	PRODUCT CUSTOMER DRAWING SERIES: 505603 MATERIAL NUMBER: SEE TABLE IN SHEET 1 CUSTOMER: GENERAL		
			A3		DOCUMENT NUMBER: 5056030000 DOC TYPE: PSD DOC PART: 000 SHEET NUMBER: 2 OF 2		



CONFIDENTIAL

No.	NAME	MATERIAL	FINISH
①	HOUSING	LIQUID CRYSTAL POLYMER UL94V-0, BLACK	N/A
②	microSD TERMINAL	COPPER ALLOY	CONTACT AREA MINIMUM 0.3 MICROMETER GOLD PLATING TAIL AREA : MINIMUM 0.05 MICROMETER GOLD PLATING UNDERPLATING : NICKEL OVERALL
③	nanoSIM TERMINAL & SWITCH	COPPER ALLOY	CONTACT AREA MINIMUM 0.3 MICROMETER GOLD PLATING TAIL AREA : MINIMUM 0.05 MICROMETER GOLD PLATING UNDERPLATING : NICKEL OVERALL
④	SHELL	STAINLESS STEEL	TAIL AREA : MINIMUM 0.05 MICROMETER GOLD PLATING UNDERPLATING : NICKEL OVERALL
⑤	EJECT LEVER	STAINLESS STEEL	N/A
⑥	EJECT BAR	STAINLESS STEEL	N/A
⑦	DETECT LEVER	COPPER ALLOY	CONTACT AREA MINIMUM 0.3 MICROMETER GOLD PLATING TAIL AREA : MINIMUM 0.05 MICROMETER GOLD PLATING UNDERPLATING : NICKEL OVERALL
⑧	HOOK	PRESS:STAINLESS STEEL MOLD:POLYAMIDE UL94V-0 BLACK	N/A

DETAIL 1  
SCALE 10:1

NOTES :

- TERMINAL AND NAIL COPLANARITY TO BE 0.1 MAXIMUM. (FROM GAUGE PLATE)
  - STAND OFF DIMENSION (STAND OFF DIMENSION IS INCLUDED IN THE CONNECTOR TOTAL HEIGHT)
  - DETECT SWITCH FUNCTION
 

NO TRAY	CLOSE
TRAY EJECTED POSITION	CLOSE
TRAY MATED POSITION	OPEN
  - PATTERN KEEP OUT AREA DIMENSION
  - (DIMENSION) : REFERENCE VALUE (IT IS A NON-MANAGEMENT DIMENSION)
  - PLASTIC POST FOR SMT POSITION.
  - ELV & RoHS COMPLIANT.
  - LOT No. 5 11 27 0
 

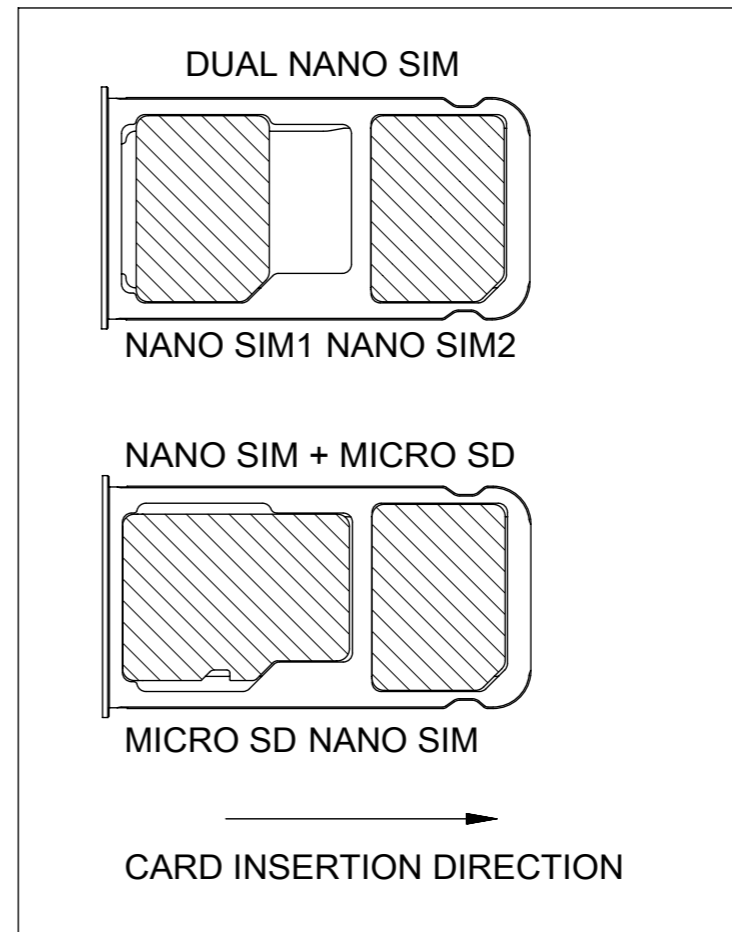
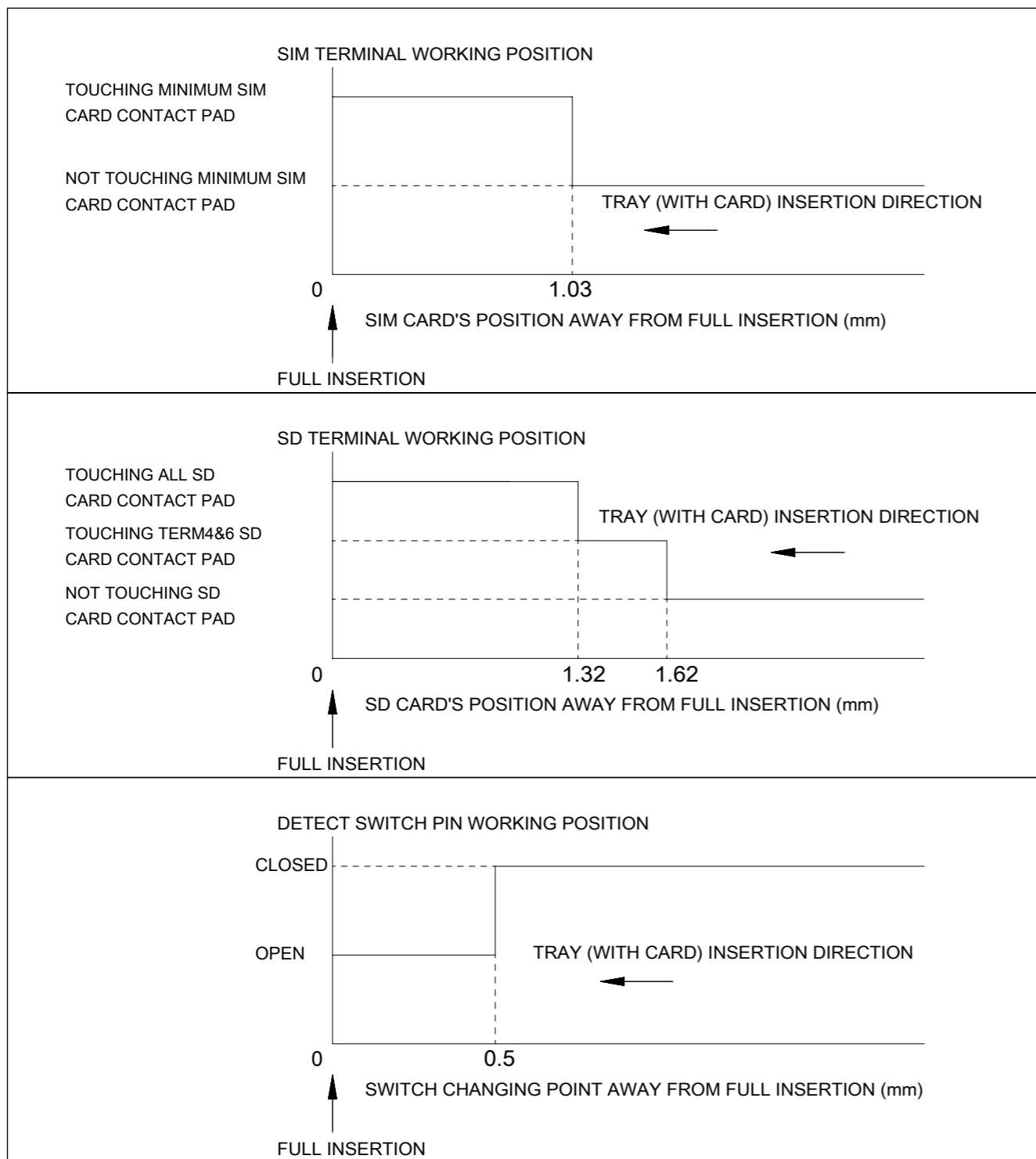
THE YEAR OF GRACE	MONTH	DAY	LINE No.
5 : 20*5	01 : JANUARY	01 - 31	
6 : 20*6	02 : FEBRUARY		
7 : 20*7			
		12 : DECEMBER	
9. 一般公差は以下を優先する。  
GENERAL TOLERANCES OF THE HIGHEST PRIORITY.(UNLESS SPECIFIED)
- |                     |       |
|---------------------|-------|
| 0.25 UNDER          | ±0.05 |
| 0.25 OVER 0.5 UNDER | ±0.08 |
| 0.5 OVER 1.0 UNDER  | ±0.10 |
| 1.0 OVER 10 UNDER   | ±0.15 |
| 10 OVER 30 UNDER    | ±0.25 |
| 30 OVER             | ±0.3  |
| ANGULAR ±1°         |       |

5056032092	6+6+8
EMBOSSED PACKAGE	極数
オーダー番号 ORDER No.	CIRCUITS
CONNECTOR SERIES No.5056032021	

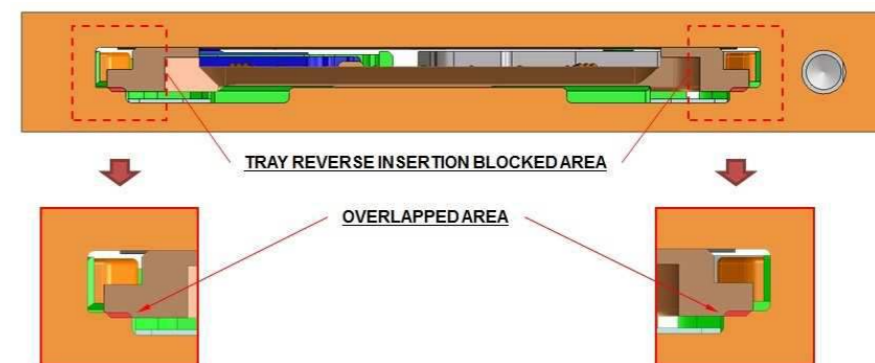
THIS DRAWING CONTAINS INFORMATION THAT IS PROPRIETARY TO MOLEX ELECTRONIC TECHNOLOGIES, LLC AND SHOULD NOT BE USED WITHOUT WRITTEN PERMISSION

EC NO: 108529 DRWN: DGONDO CHK'D: SMARUYAMA APPR: TKUSUHARA01	2016/09/07	GENERAL TOLERANCES (UNLESS SPECIFIED)	DIMENSION UNITS	SCALE	
	2016/09/20	ANGULAR TOL ± 1.0 °	MM	5:1	
	2016/09/20	4 PLACES ± 0.3	DRWN BY	DATE	
		3 PLACES ± 0.3	DGONDO	2016/07/28	
	2 PLACES ± 0.3	CHK'D BY	DATE		
	1 PLACE ± 0.3	SMARUYAMA	2016/08/02		
	0 PLACES ± 0.3	APPR BY	DATE		
		KMORIKAWA	2016/08/04		
		DRAWING SIZE	THIRD ANGLE PROJECTION		
		A3			
		DRAFT WHERE APPLICABLE MUST REMAIN WITHIN DIMENSIONS			

SERIES	MATERIAL NUMBER	CUSTOMER
505603	SEE TABLE IN SHEET 1	GENERAL
DOCUMENT NUMBER	DOC TYPE	DOC PART
5056031000	PSD	000
SHEET NUMBER		1 OF 6



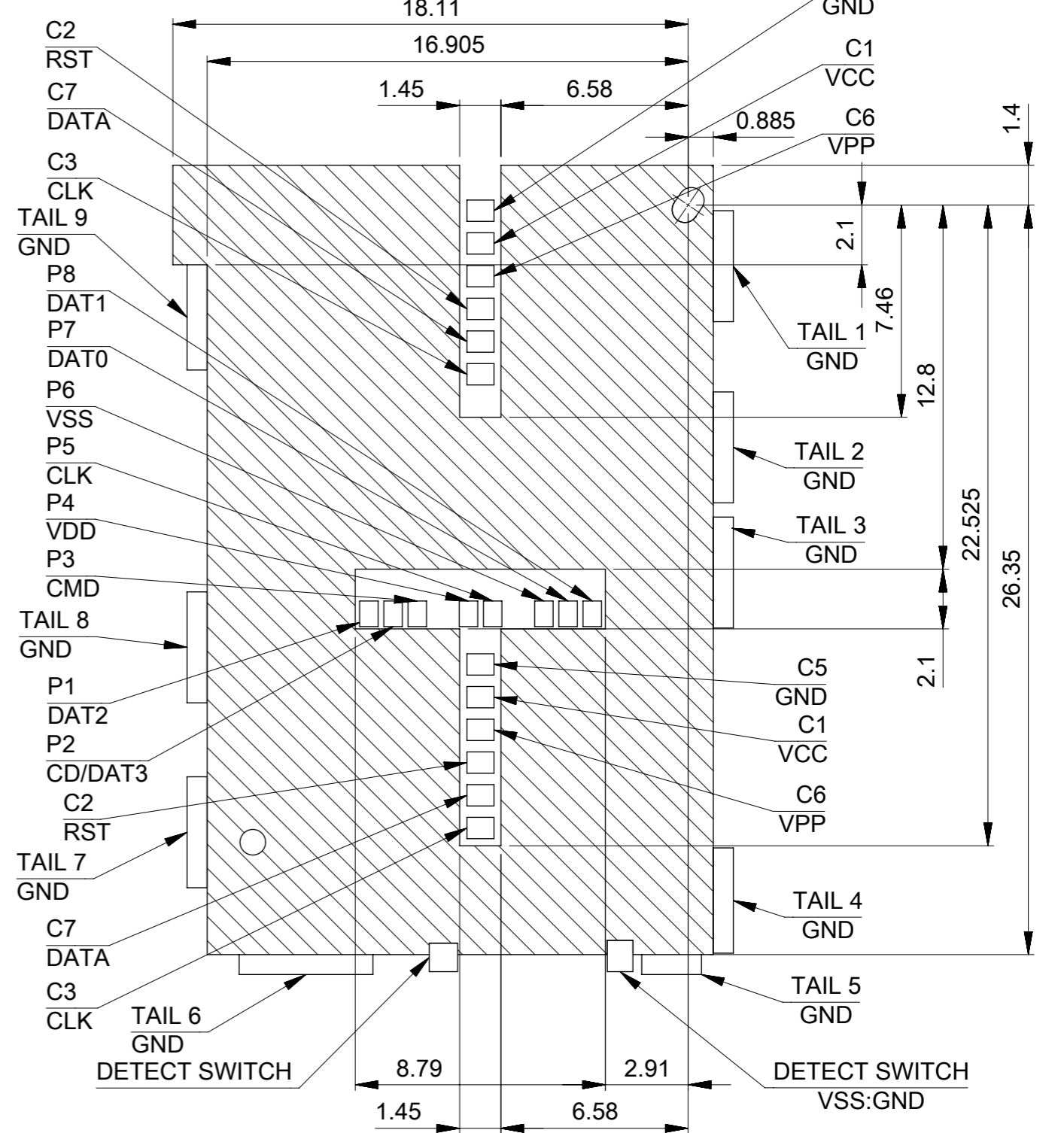
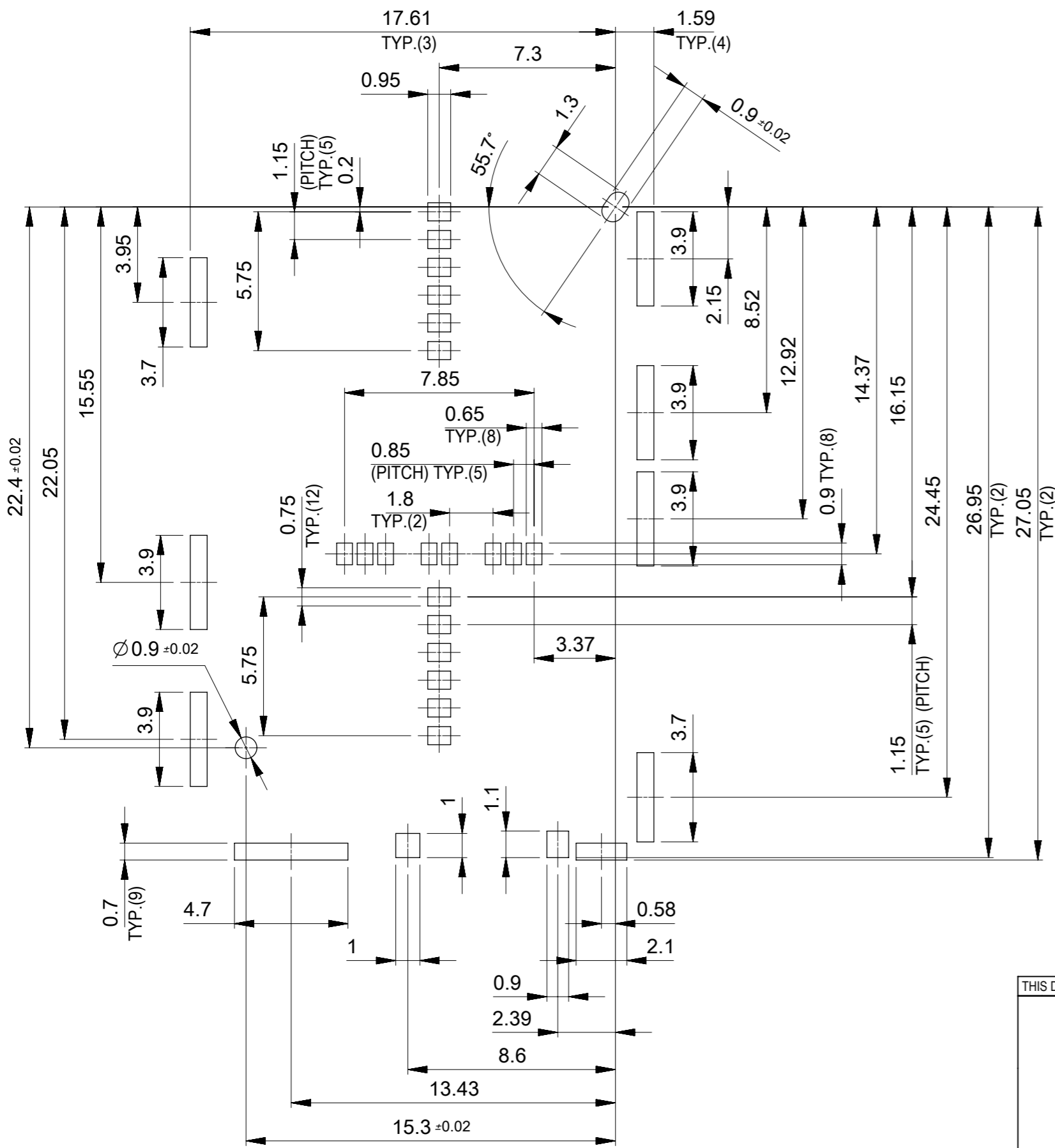
10. SET UP "TRAY REVERSE INSERTION BLOCKED AREA" IS RECOMMENDED. IT EFFECTS TO PREVENT REVERSE INSERTION.



11. APPLICATION SPECIFICATION REFER TO "5056032092 PS A00".

THIS DRAWING CONTAINS INFORMATION THAT IS PROPRIETARY TO MOLEX ELECTRONIC TECHNOLOGIES, LLC AND SHOULD NOT BE USED WITHOUT WRITTEN PERMISSION										
EC NO: 108529 DRWN: DGONDO CHK'D: SMARUYAMA APPR: TKUSUHARA01	2016/09/07	2016/09/20	2016/09/20	GENERAL TOLERANCES (UNLESS SPECIFIED) ANGULAR TOL ± 1.0 ° 4 PLACES ± 0.3 3 PLACES ± 0.3 2 PLACES ± 0.3 1 PLACE ± 0.3 0 PLACES ± 0.3	DIMENSION UNITS	SCALE				
					MM	2:1				
					DRWN BY	DATE	3IN2 BAR-PUSH CNC-TRAY ANTI-CRUSH ASSY (DUAL NSIM / NSIM+MSD)			
					DGONDO	2016/07/28				
					CHK'D BY	DATE	PRODUCT CUSTOMER DRAWING			
					SMARUYAMA	2016/08/02				
			APPR BY	DATE	SERIES	MATERIAL NUMBER	CUSTOMER			
			KMORIKAWA	2016/08/04	505603	SEE TABLE IN SHEET 1	GENERAL			
			DRAFT WHERE APPLICABLE MUST REMAIN WITHIN DIMENSIONS	DRAWING SIZE	THIRD ANGLE PROJECTION	DOCUMENT NUMBER		DOC TYPE	DOC PART	SHEET NUMBER
				A3		5056031000		PSD	000	2 OF 6

PATTERN KEEP OUT AREA  
GENERAL TORELANCES : ±0.05



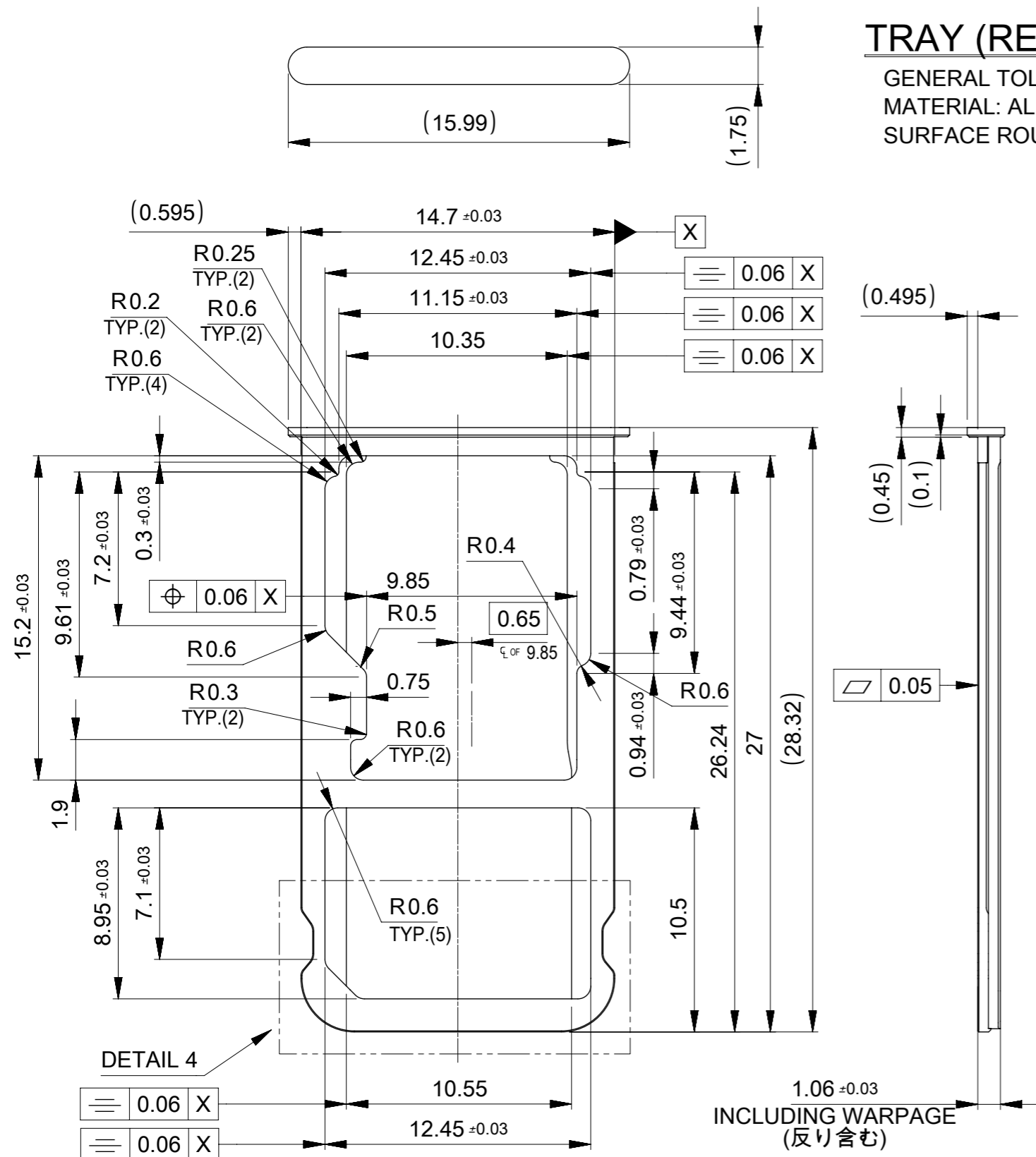
**RECOMMENDED P.W.BOARD PATTERN LAYOUT**  
GENERAL TORELANCES : ±0.05

THIS DRAWING CONTAINS INFORMATION THAT IS PROPRIETARY TO MOLEX ELECTRONIC TECHNOLOGIES, LLC AND SHOULD NOT BE USED WITHOUT WRITTEN PERMISSION

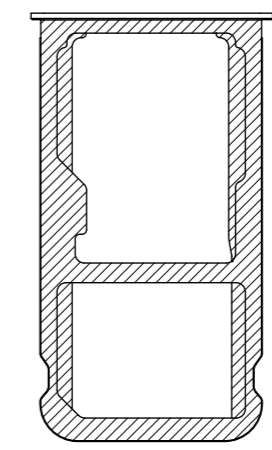
EC NO: 108529 DRWN: DGONDO CHK'D: SMARUYAMA APPR: TKUSUHARA01	2016/09/07	GENERAL TOLERANCES (UNLESS SPECIFIED)	DIMENSION UNITS	SCALE	
	2016/09/20	ANGULAR TOL ± 1.0 °	MM	5:1	
	2016/09/20	4 PLACES ± 0.3	DRWN BY	DATE	
		3 PLACES ± 0.3	DGONDO	2016/07/28	
	2 PLACES ± 0.3	CHK'D BY	DATE		
	1 PLACE ± 0.3	SMARUYAMA	2016/08/02		
	0 PLACES ± 0.3	APPR BY	DATE		
		KMORIKAWA	2016/08/04		
		DRAFT WHERE APPLICABLE MUST REMAIN WITHIN DIMENSIONS	DRAWING SIZE	THIRD ANGLE PROJECTION	
			A3		
		PRODUCT CUSTOMER DRAWING			
		SERIES	MATERIAL NUMBER	CUSTOMER	
		505603	SEE TABLE IN SHEET 1	GENERAL	
		DOCUMENT NUMBER	DOC TYPE	DOC PART	SHEET NUMBER
		5056031000	PSD	000	3 OF 6

# TRAY (REFERENCE ONLY)

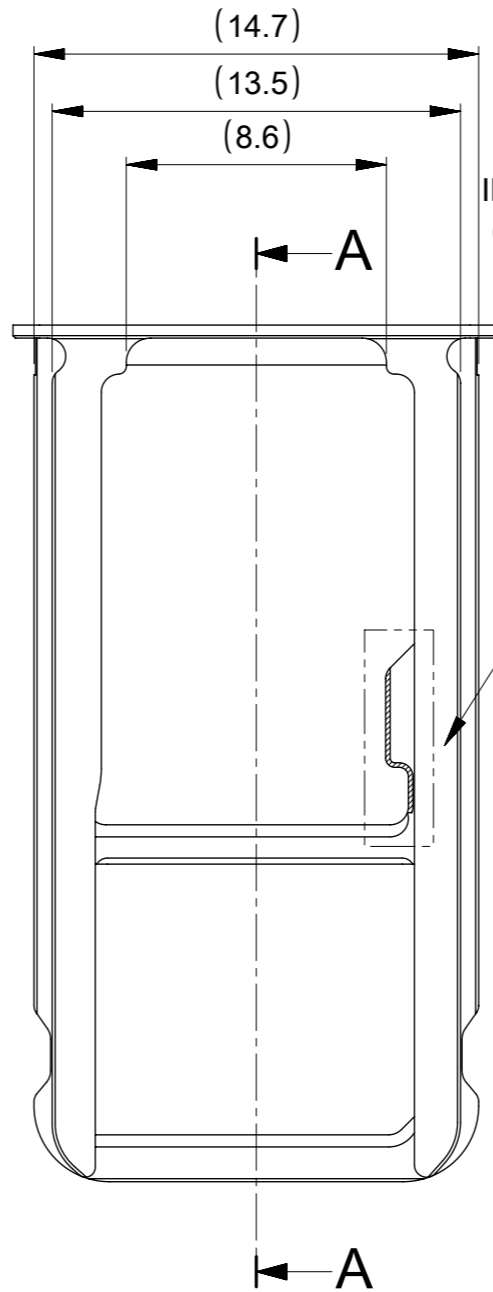
GENERAL TOLERANCE: 0.05  
 MATERIAL: ALUMINUM or SUS630  
 SURFACE ROUGHNESS : Ra=0.32μm MAXIMUM.



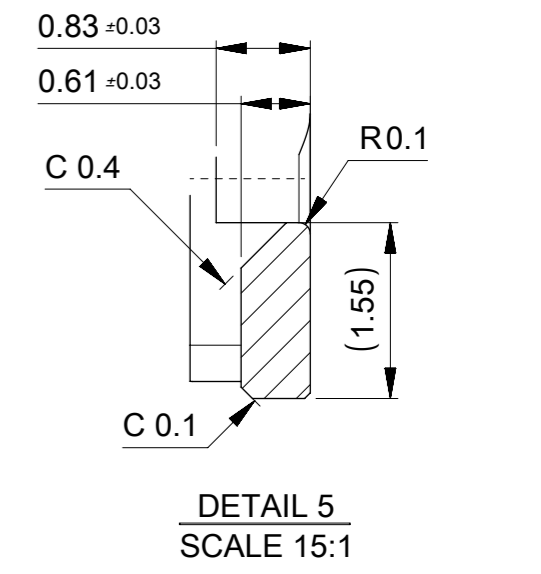
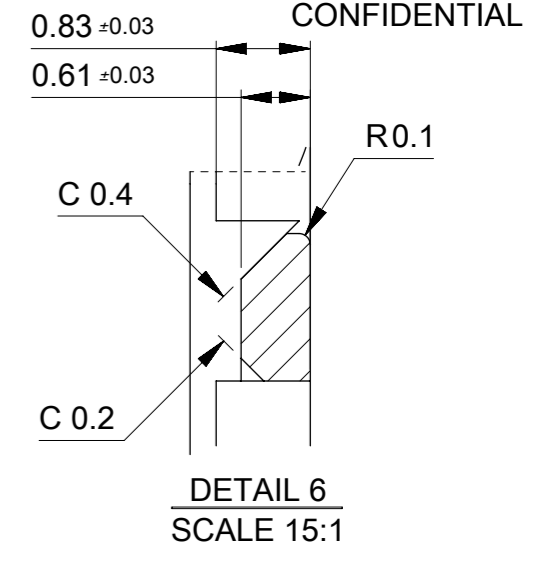
1.06 ±0.03  
 INCLUDING WARPAGE  
 (反り含む)



INSULATION PLATING AREA  
 ( INCLUDING THE SIDE FACE )



SECTION A-A



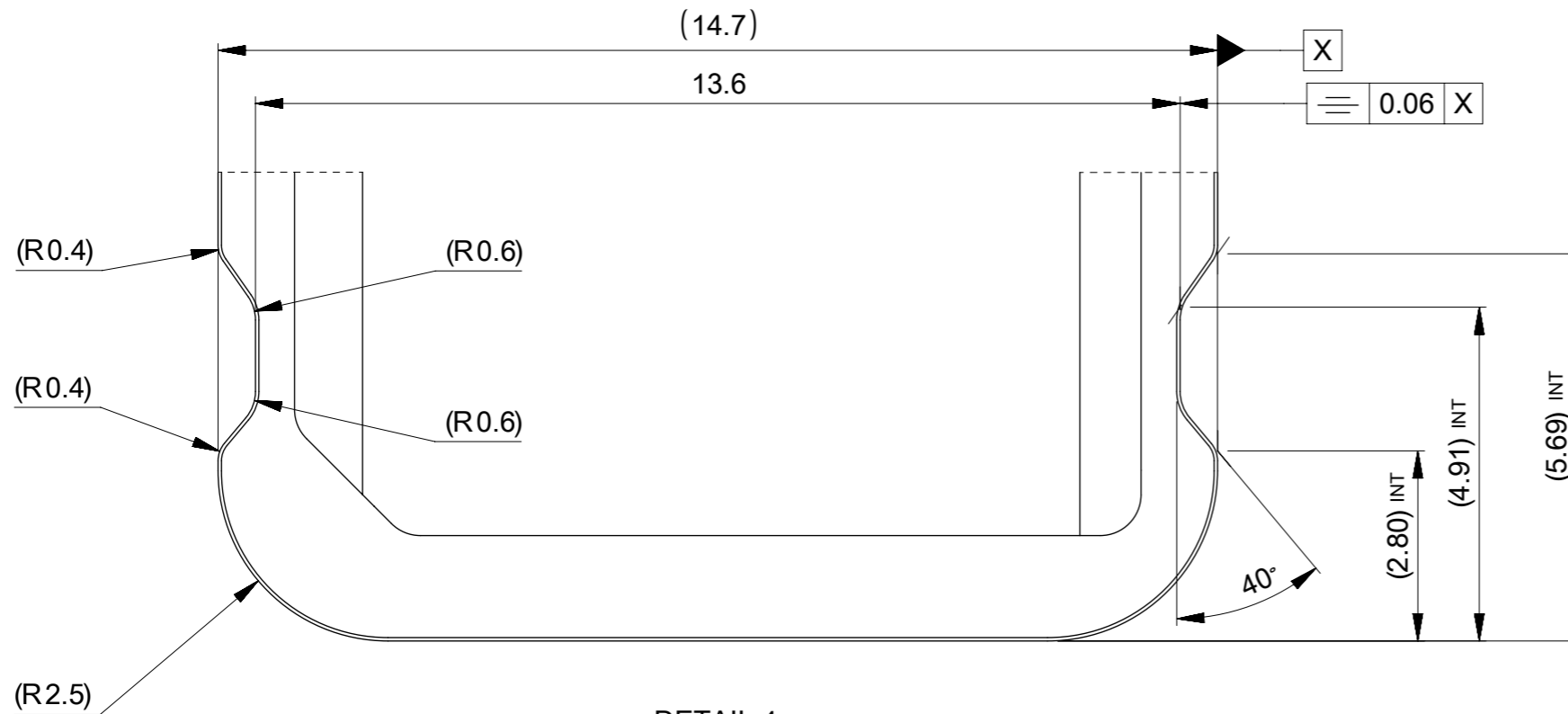
HATCH AREA IS C0.15

DETAIL 7  
 SCALE 5:1

THIS DRAWING CONTAINS INFORMATION THAT IS PROPRIETARY TO MOLEX ELECTRONIC TECHNOLOGIES, LLC AND SHOULD NOT BE USED WITHOUT WRITTEN PERMISSION

EC NO: 108529 DRWN: DGONDO CHK'D: SMARUYAMA APPR: TKUSUHARA01	2016/09/07 2016/09/20 2016/09/20	GENERAL TOLERANCES (UNLESS SPECIFIED) ANGULAR TOL ± 1.0 ° 4 PLACES ± 0.3 3 PLACES ± 0.3 2 PLACES ± 0.3 1 PLACE ± 0.3 0 PLACES ± 0.3	DIMENSION UNITS: MM SCALE: 4:1		
	DRWN BY: DGONDO DATE: 2016/07/28	CHK'D BY: SMARUYAMA DATE: 2016/08/02	APPR BY: KMORIKAWA DATE: 2016/08/04		3IN2 BAR-PUSH CNC-TRAY ANTI-CRUSH ASSY (DUAL NSIM / NSIM+MSD)
	PRODUCT CUSTOMER DRAWING				
	DRAFT WHERE APPLICABLE MUST REMAIN WITHIN DIMENSIONS				DRAWING SIZE: A3 THIRD ANGLE PROJECTION

TRAY (REFERENCE ONLY)



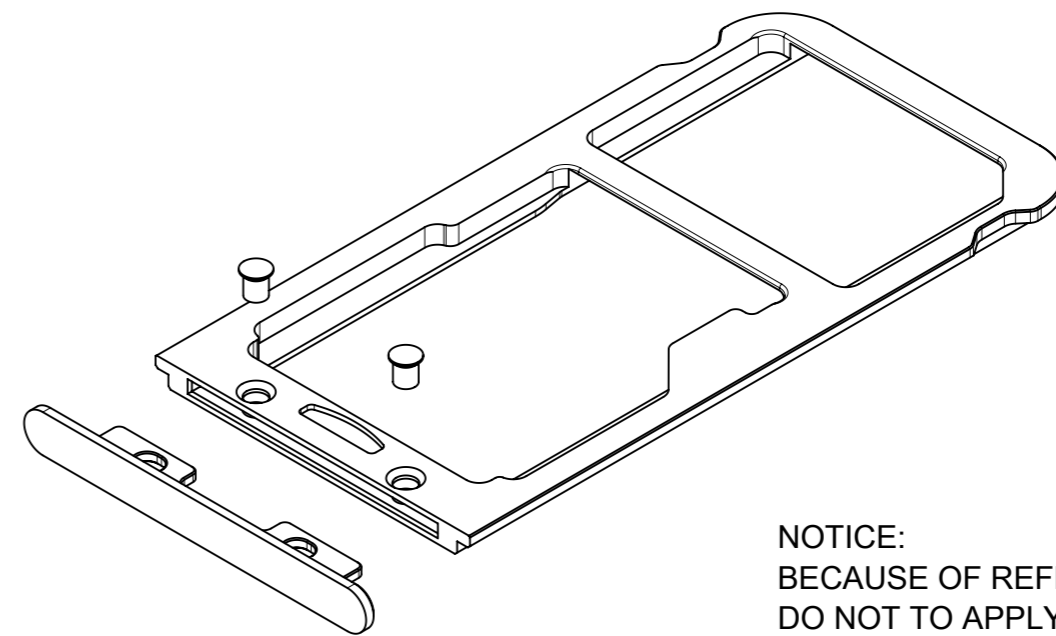
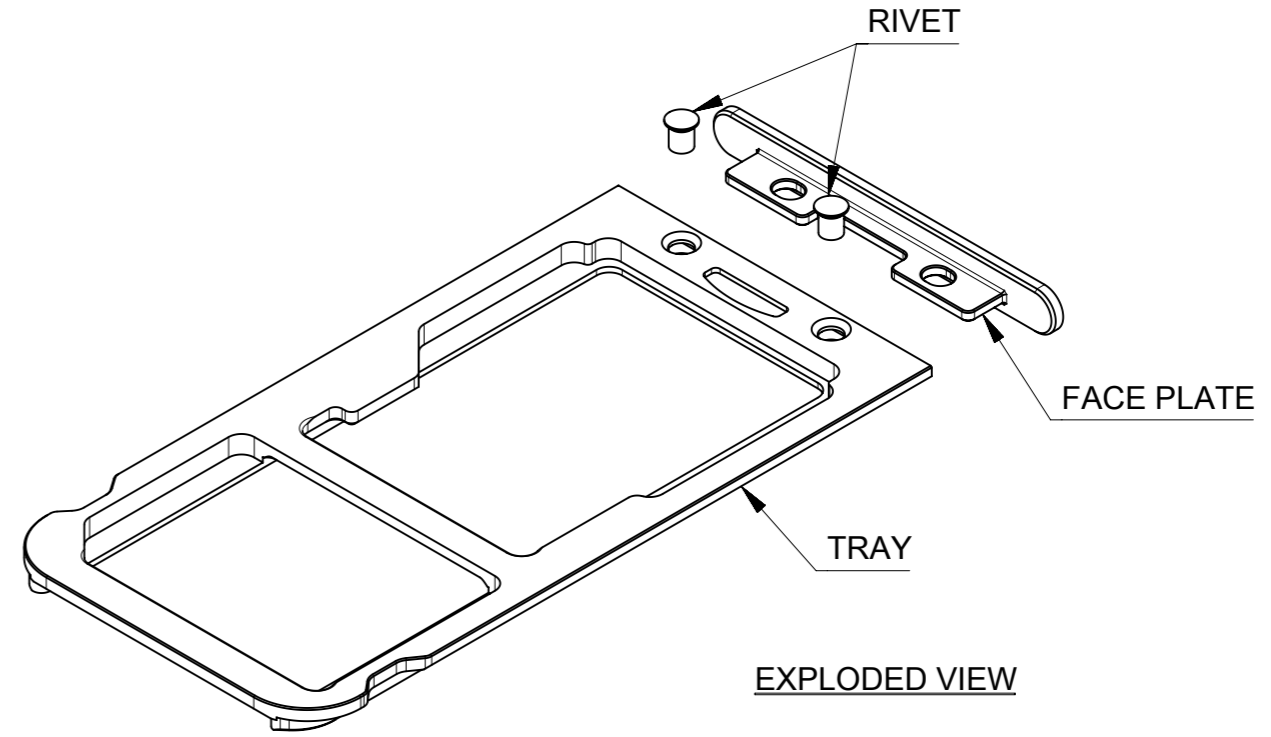
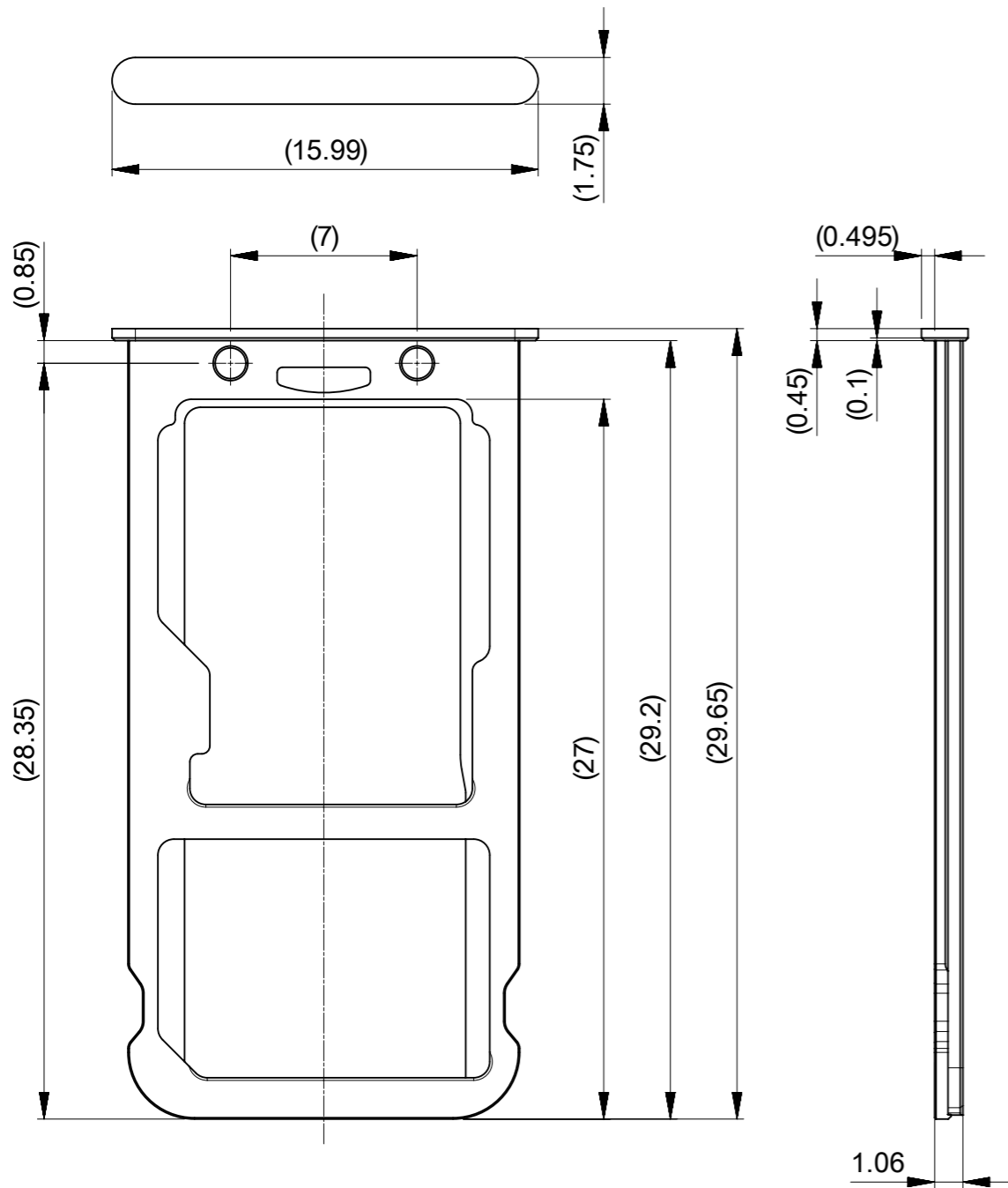
DETAIL 4  
SCALE 10:1

Molex shall not be responsible for any infringement to the extent such infringement is the result of (a) use of the Product(s) in combination with any other products not provided by Molex if the infringement would not have occurred but for such combination, (b) any alteration or modification of the Product(s) not undertaken or authorized by Molex if the infringement would not have occurred but for such alteration or modification, (c) Molex's compliance with Buyer's specifications if the infringement would not have occurred but for such compliance, or (d) Buyer's failure to comply with Molex's instructions regarded as necessary to render the Product(s) non-infringing if the infringement would not have occurred if Buyer would have complied with Molex's instructions.

THIS DRAWING CONTAINS INFORMATION THAT IS PROPRIETARY TO MOLEX ELECTRONIC TECHNOLOGIES, LLC AND SHOULD NOT BE USED WITHOUT WRITTEN PERMISSION

EC NO: 108529 DRWN: DGONDO CHK'D: SMARUYAMA APPR: TKUSUHARA01	2016/09/07 2016/09/20 2016/09/20	GENERAL TOLERANCES (UNLESS SPECIFIED) ANGULAR TOL ± 1.0 ° 4 PLACES ± 0.3 3 PLACES ± 0.3 2 PLACES ± 0.3 1 PLACE ± 0.3 0 PLACES ± 0.3	DIMENSION UNITS	SCALE					
	MM		10:1						
	DRWN BY		DATE	DRWN BY	DATE	3IN2 BAR-PUSH CNC-TRAY ANTI-CRUSH ASSY (DUAL NSIM / NSIM+MSD)			
	DGONDO		2016/07/28	CHK'D BY	DATE				
SMARUYAMA	2016/08/02	APPR BY	DATE	PRODUCT CUSTOMER DRAWING					
KMORIKAWA	2016/08/04	DRAWING SIZE	THIRD ANGLE PROJECTION	SERIES	MATERIAL NUMBER	CUSTOMER			
A3		505603	SEE TABLE IN SHEET 1	GENERAL					
DRAFT WHERE APPLICABLE MUST REMAIN WITHIN DIMENSIONS				DOCUMENT NUMBER	DOC TYPE	DOC PART	SHEET NUMBER		
				5056031000	PSD	000	5 OF 6		

TRAY CEPARATE TYPE (REFERENCE ONLY)



NOTICE:  
BECAUSE OF REFERENCE EXAMPLE,  
DO NOT TO APPLY THIS DESIGN.

Molex shall not be responsible for any infringement to the extent such infringement is the result of (a) use of the Product(s) in combination with any other products not provided by Molex if the infringement would not have occurred but for such combination, (b) any alteration of modification of the Product(s) not undertaken or authorized by Molex if the infringement would not have occurred but for such alteration or modification, (c) Molex's compliance with Buyer's specifications if the infringement would not have occurred but for such compliance, or (d) Buyer's failure to comply with Molex's instructions regarded as necessary to render the Product(s) non-infringing if the infringement would not have occurred if Buyer would have complied with Molex's instructions.

THIS DRAWING CONTAINS INFORMATION THAT IS PROPRIETARY TO MOLEX ELECTRONIC TECHNOLOGIES, LLC AND SHOULD NOT BE USED WITHOUT WRITTEN PERMISSION

EC NO: 108529 DRWN: DGONDO CHK'D: SMARUYAMA APPR: TKUSUHARA01	2016/09/07	GENERAL TOLERANCES (UNLESS SPECIFIED)		DIMENSION UNITS	SCALE			
	2016/09/20	ANGULAR TOL ± 1.0 °		MM	4:1			
	2016/09/20	4 PLACES ± 0.3	3 PLACES ± 0.3	DRWN BY	DATE			
		2 PLACES ± 0.3	1 PLACE ± 0.3	DGONDO	2016/07/28			
		0 PLACES ± 0.3		CHK'D BY	DATE			
			SMARUYAMA	2016/08/02	3IN2 BAR-PUSH CNC-TRAY ANTI-CRUSH ASSY (DUAL NSIM / NSIM+MSD)			
DRAFT WHERE APPLICABLE MUST REMAIN WITHIN DIMENSIONS						PRODUCT CUSTOMER DRAWING		
			APPR BY	DATE		SERIES	MATERIAL NUMBER	CUSTOMER
			KMORIKAWA	2016/08/04		505603	SEE TABLE IN SHEET 1	GENERAL
			DRAWING SIZE	THIRD ANGLE PROJECTION		DOCUMENT NUMBER	DOC TYPE	DOC PART
			A3		5056031000	PSD	000	6 OF 6