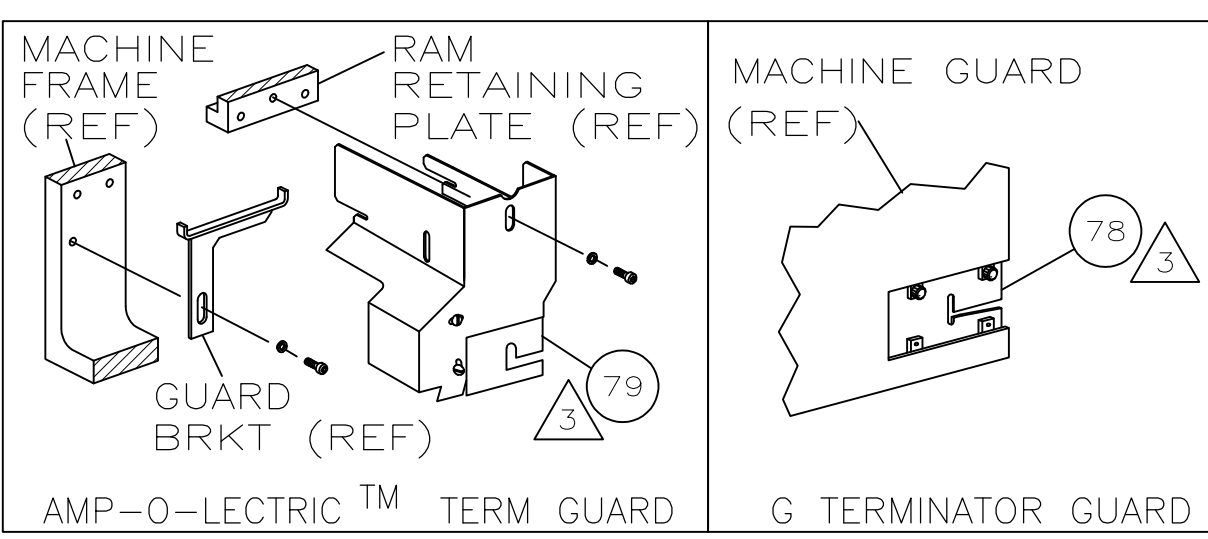
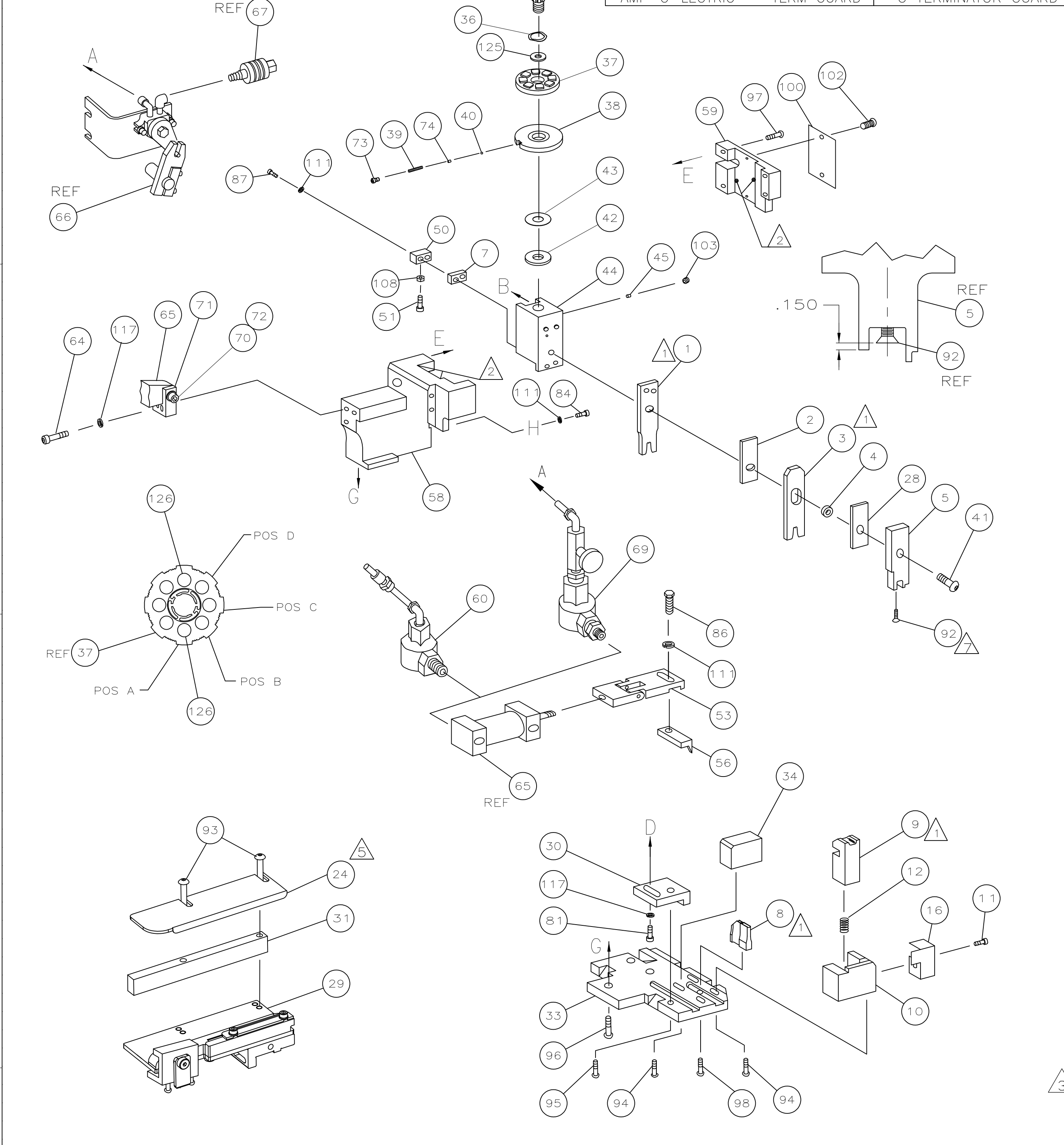


Table with columns: PART NUMBER, REV, FIRST USED. Rows: 1385824-1 C 122500-1, 1385824-2 C 565435-5, 1385824-3 C 354500-1



TERMINAL NAME: 6.3MM YESC SEALED. Table with columns: AMP TERM PN, MFR TERM PN, YAZAKI TERMINAL, CUSTOMER CRIMP SPECS. Includes rows for CRIMP, SIZE, TYPE, RANGE, WIRE, INSUL, and WIRE STRIP LENGTH.

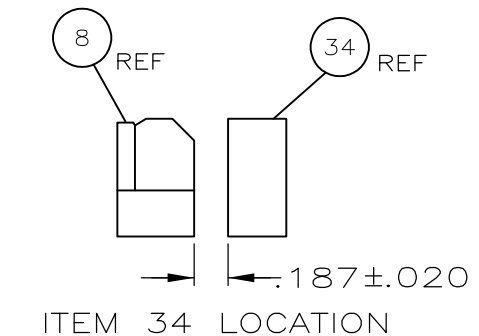
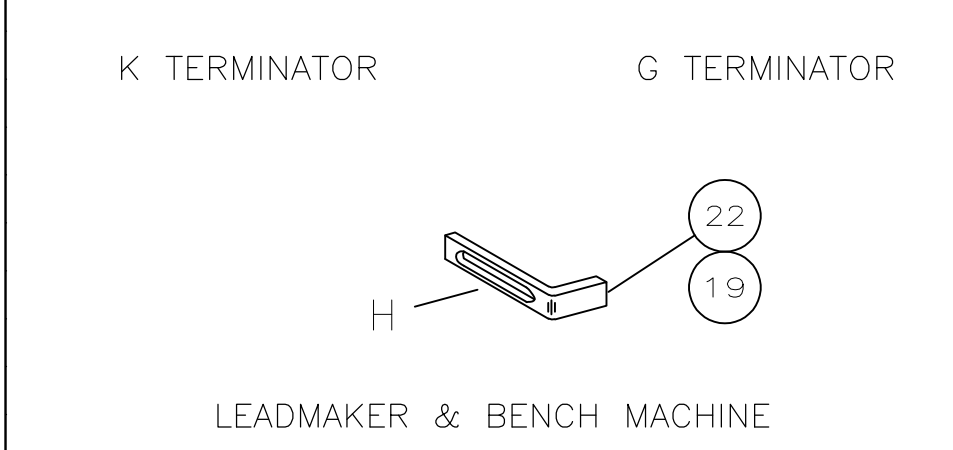
LOC A DIST 66. REVISIONS table with columns: REVISION, DESCRIPTION, DATE, DWN, APVO. Includes rows for LEADMAKER, BENCH MODEL K, BENCH MODEL G, AIRFEED.



Parts List table with columns: QTY REQD PER ASSY, PART NO, DESCRIPTION, ITEM NO. Includes items like WASHER, LOCK, PIN, WIRE DISC, GENERAL INSTRUCTION PACKAGE, etc.

Assembly sequence table with columns: QTY REQD PER ASSY, PART NO, DESCRIPTION, ITEM NO. Includes items like WASHER, LOCK, AIR FEED VALVE ASSY, VALVE, SHUT OFF, etc.

- 1 RECOMMENDED SPARE PARTS.
2 GREASE LIGHTLY.
3 GUARD MUST BE IN PLACE WHEN OPERATING APPLICATOR IN A BENCH MACHINE.
4 SEE DRAWING FOR COMPONENTS
5 REAR STRIP GUIDE TO GUIDE ON INSULATION BARREL.
6 THIS APPLICATOR APPLIES TERMINAL WITH A SEAL.
7 APPLY TORQ-SEAL IN ALLEN SOCKET TO FILL HOLE AFTER FLAT HD HAS BEEN ADJUSTED TO CORRECT HEIGHT AT QUALIFICATION. APPLY PN 1-23419-5 LOC-TITE TO THREADS.



THIS DRAWING IS A CONTROLLED DOCUMENT. Tyco Electronics Corporation. Includes drawing title 'SIDE FEED HDM APPLICATOR', drawing number '100779', and scale information.