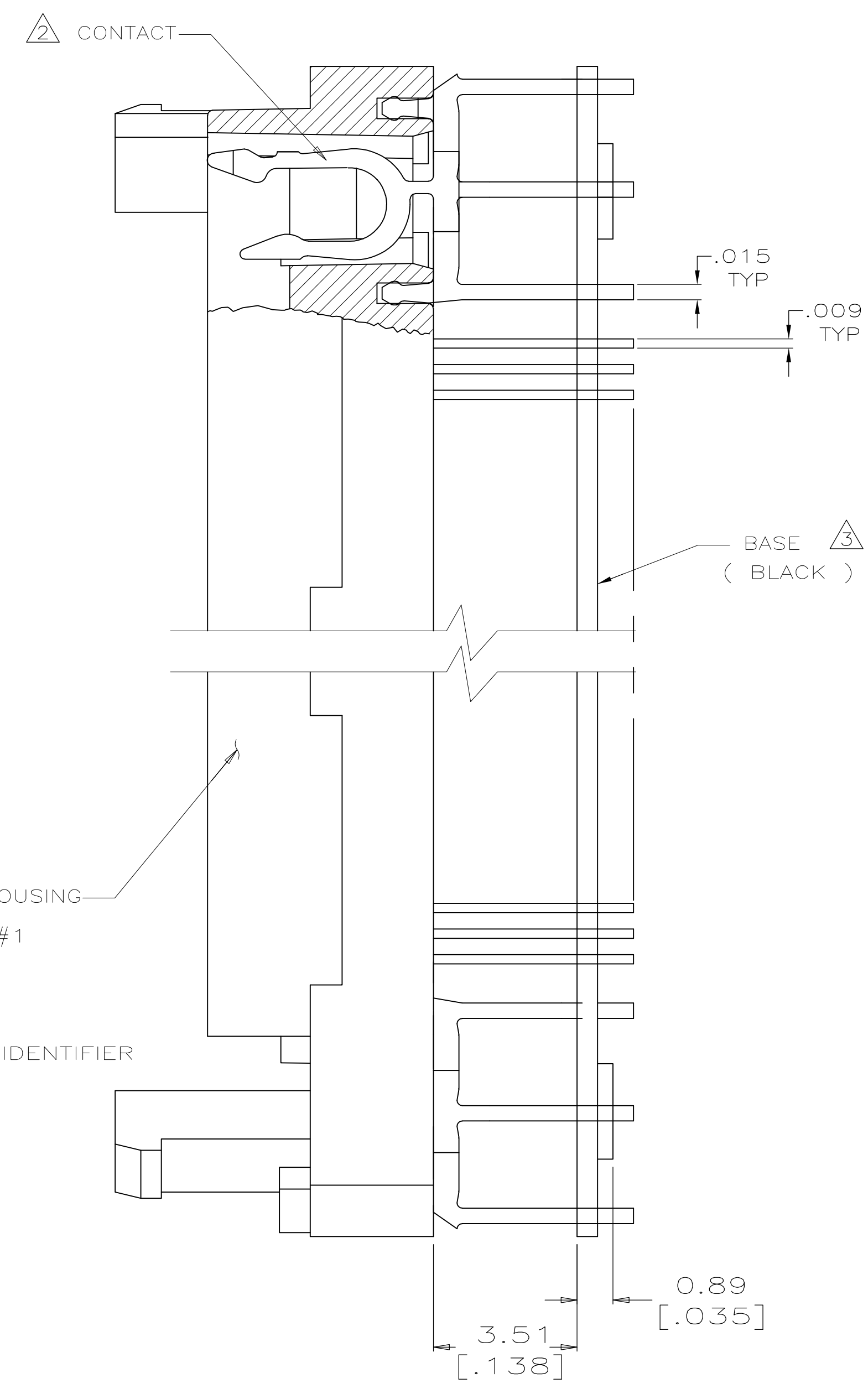
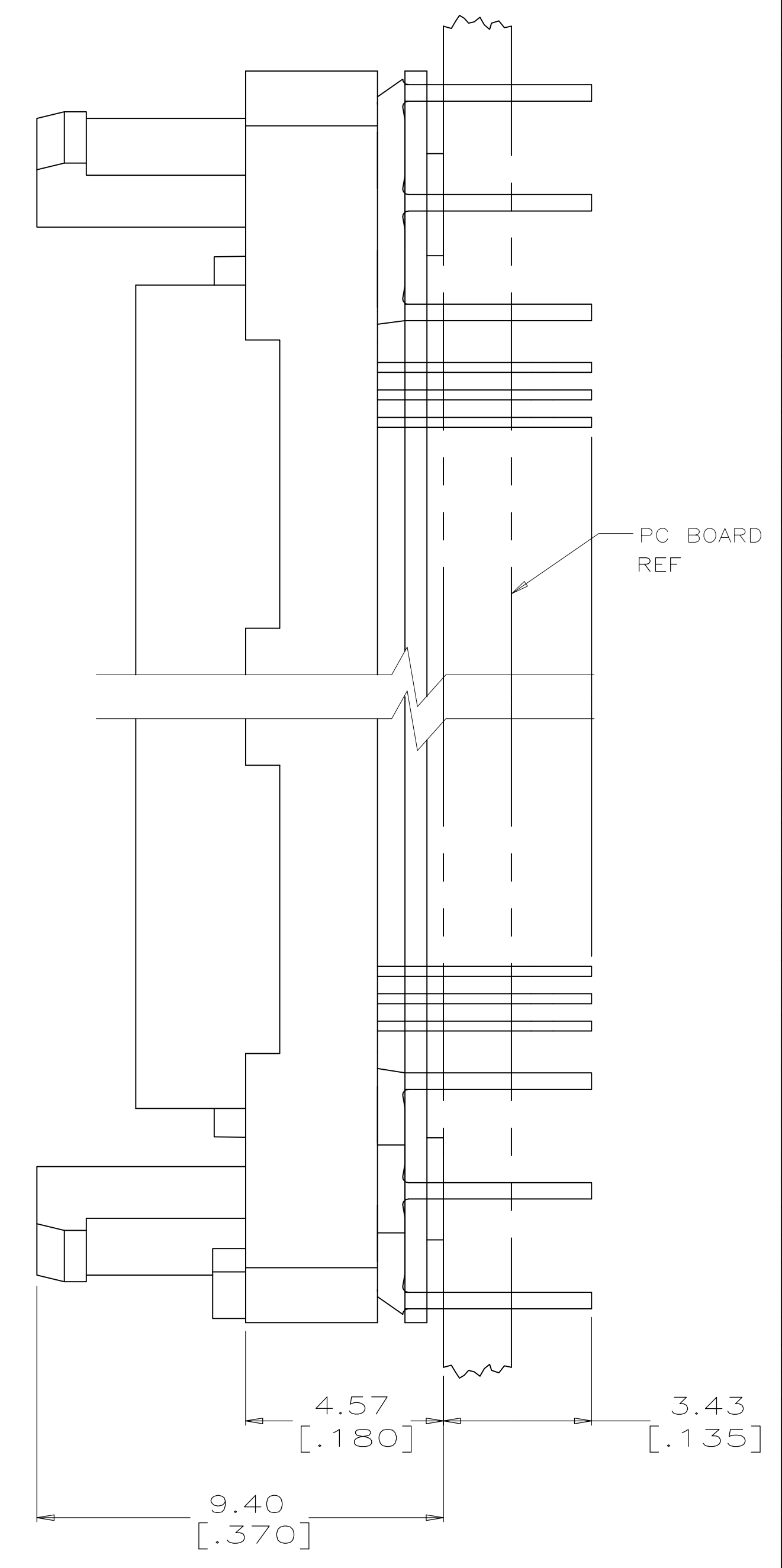


SUB-ASSEMBLY SHOWN AS SHIPPED



SUB-ASSEMBLY SHOWN IN FINAL POSITION

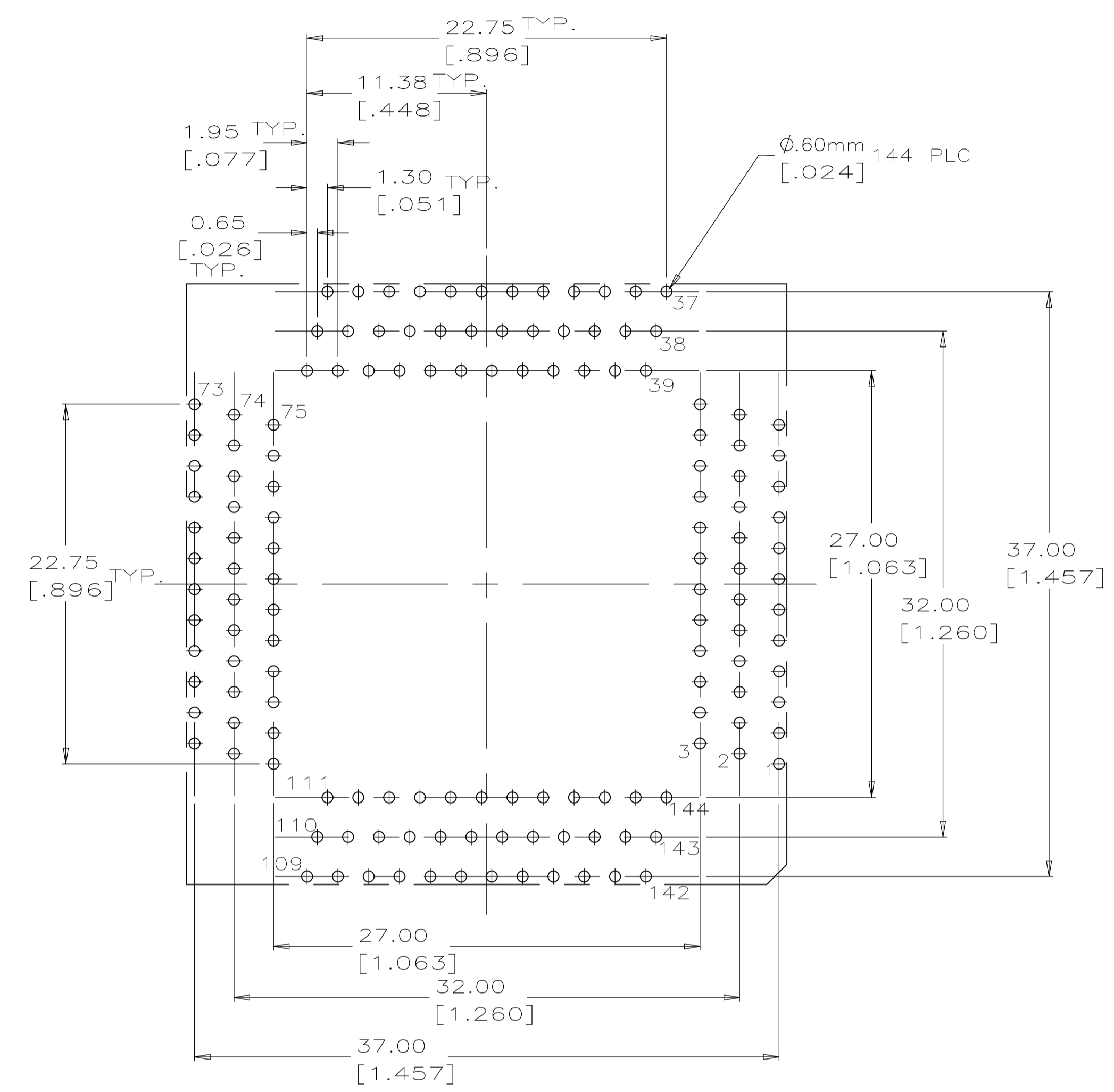


- 1 HOUSING MATERIAL SHALL BE LIQUID CRYSTAL POLYMER. (BLACK)
- 2 CONTACT MATERIAL SHALL BE PHOS. BRONZE. PLATING SHALL BE .000200 [0.00508] MIN. TIN/LEAD OVER .000050 [0.00127] MIN. NICKEL ALL OVER.
- 3 BASE MATERIAL SHALL BE LIQUID CRYSTAL POLYMER. (BLACK)
- 4 CONTACT MATERIAL SHALL BE PHOS. BRONZE. PLATING SHALL BE .000200 [0.00508] MIN. TIN (LEAD FREE) OVER .000050 [0.00127] MIN. NICKEL ALL OVER.

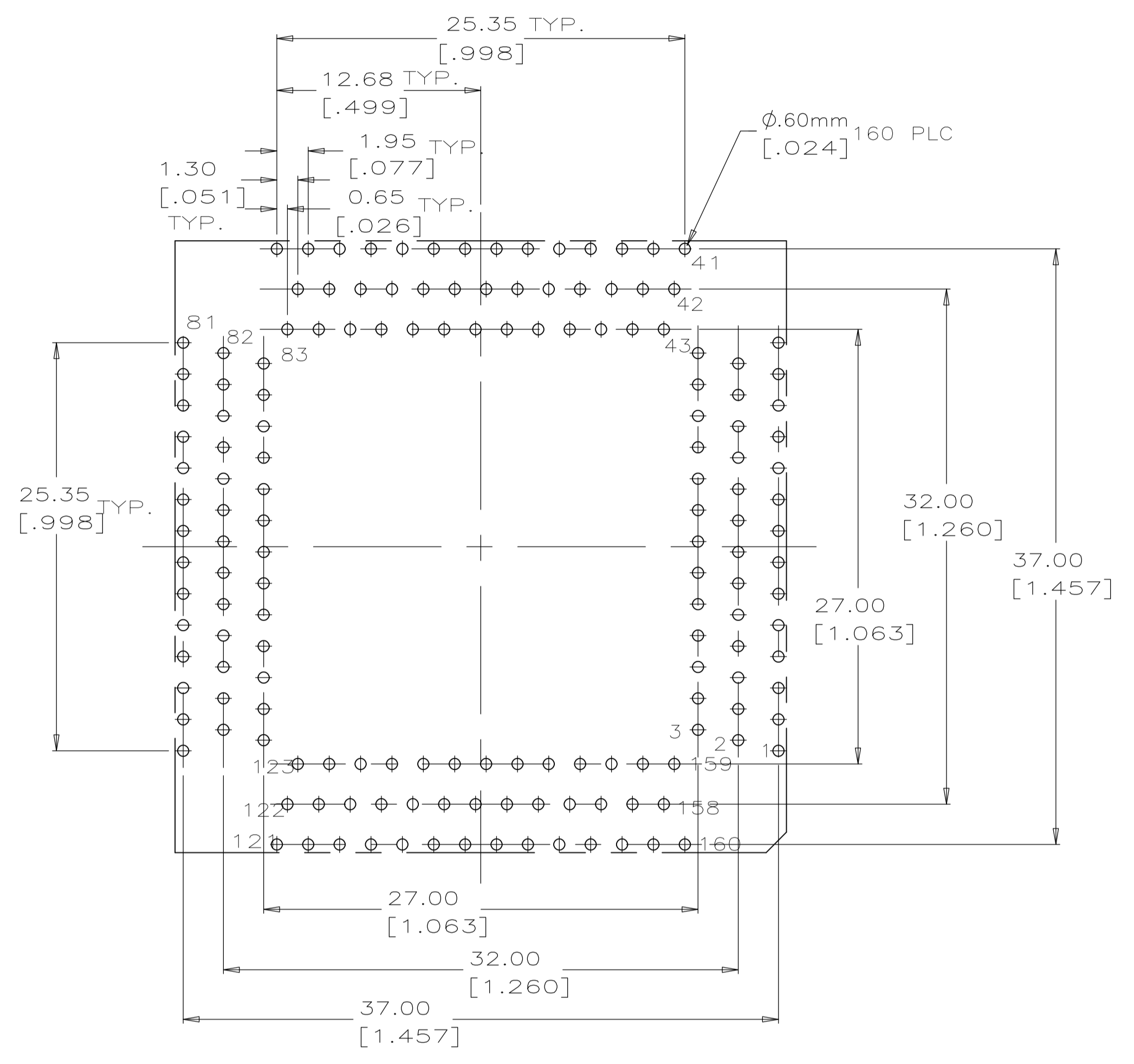
822115-4	4	6.43 [.253]	25.35 [.998]	38.20 [1.504]	2-822114-4	160
822115-3	4	7.73 [.304]	22.76 [.896]	38.20 [1.504]	2-822114-3	144
822115-4	2	6.43 [.253]	25.35 [.998]	38.20 [1.504]	822114-4	160
822115-3	2	7.73 [.304]	22.76 [.896]	38.20 [1.504]	822114-3	144
MATING COVER PART NO.	FINISH	C	B	A	PART NO.	POSN.

THIS DRAWING IS A CONTROLLED DOCUMENT.

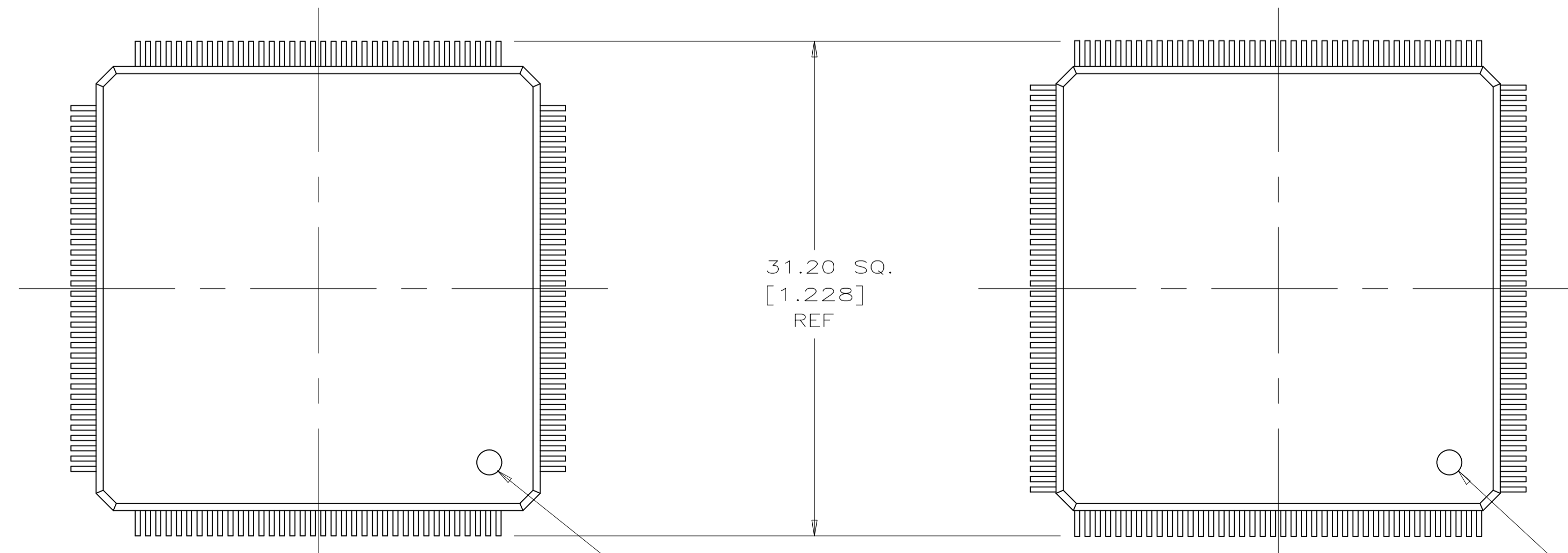
DWN: C. WHITT 8-8-91	TE Connectivity
CHK: R. MILLER 8-8-91	
APVD: G. HOWEL 8-15-91	NAME: MICRO-PITCH SOCKET, METRIC HOUSING SUB-ASSEMBLY FOR 28mm SQUARE, .65 PITCH PQFP
APPLICATION SPEC: ---	SIZE: A1
WEIGHT: ---	DRAWING NO: 00779
SEE TABLE	822114
CUSTOMER DRAWING	SCALE: 10:1 SHEET 1 OF 2 REV E1



RECOMMENDED P.C. BOARD HOLE PATTERN
SOCKET SIDE
144 POSN.



RECOMMENDED P.C. BOARD HOLE PATTERN
SOCKET SIDE
160 POSN.

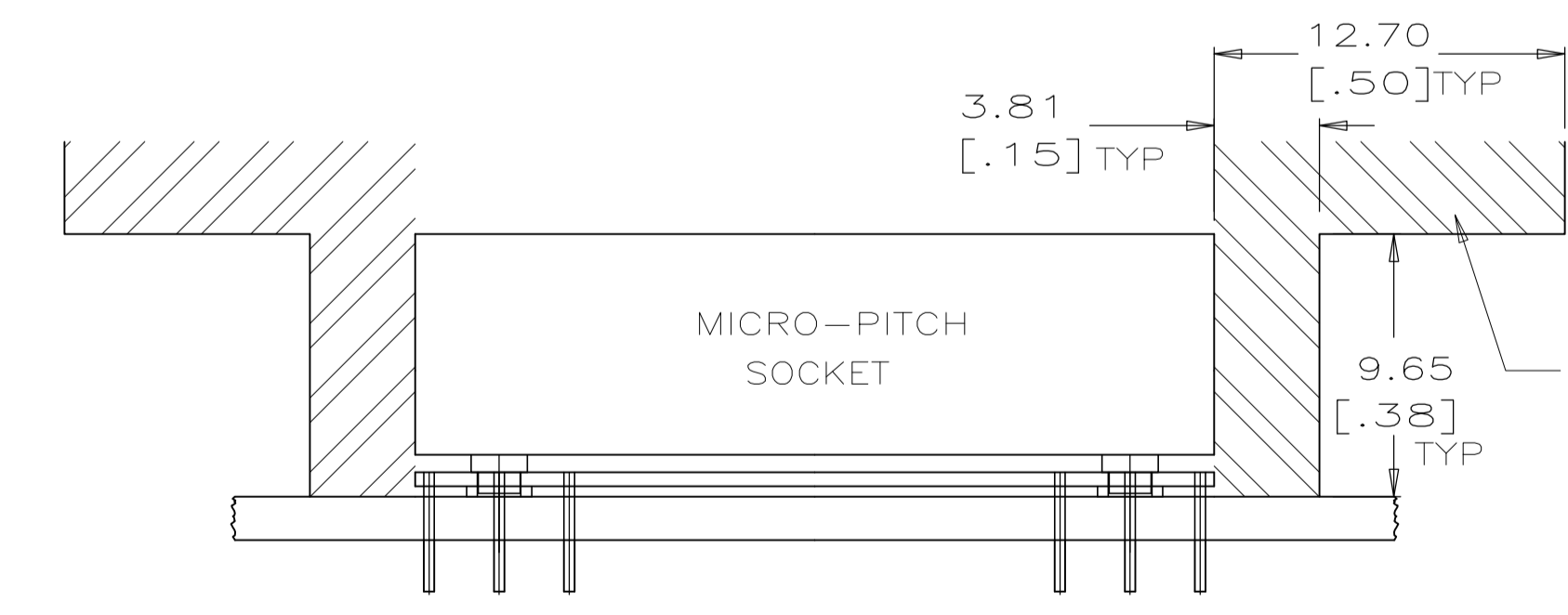


144 POSITION

PIN #1 IDENTIFIER

160 POSITION

PIN #1 IDENTIFIER



THIS AREA TO BE FREE OF COMPONENTS FOR ACCESS OF THE MICRO-PITCH HAND TOOL. MINIMUM OF TWO OPPOSITE SIDES.

THIS DRAWING IS A CONTROLLED DOCUMENT.		DWN	C.WHITT	8-9-91
DIMENSIONS: INCHES		CHK	R.MILLER	8-9-91
TOLERANCES UNLESS OTHERWISE SPECIFIED:		APVD	G.HOWEL	8-15-91
0 PLC	± -	NAME	MICRO-PITCH SOCKET, METRIC HOUSING SUB-ASSEMBLY FOR 28mm SQUARE, .65 PITCH PQFP	
1 PLC	± -	PRODUCT SPEC	-	
2 PLC	± -	APPLICATION SPEC	-	
3 PLC	± .1mm [.004]	SIZE	A1	00779
4 PLC	± -	SCALE	10:1	822114
ANGLES	± -	WEIGHT	-	
MATERIAL	-	FINISH	-	
CUSTOMER DRAWING		SCALE	10:1	SHEET 2 OF 2
		REV	E1	