

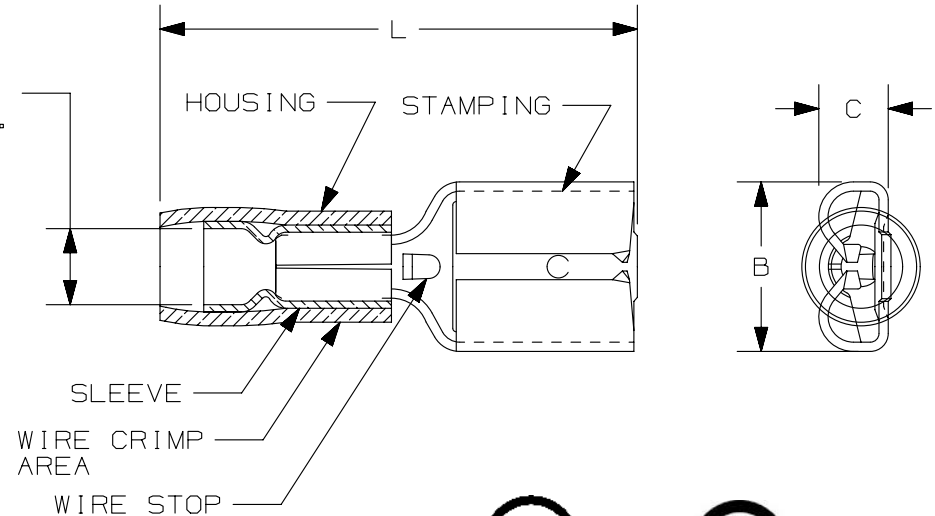
THIS COPY IS PROVIDED ON A RESTRICTED BASIS AND IS NOT TO BE USED IN ANY WAY DETRIMENTAL TO THE INTERESTS OF PANDUIT CORP.

PANDUIT PART #	TAB SIZE in. [mm]	WIRE RANGE AWG [mm ²]	COLOR	DIMENSIONS in. [mm]				
				MAX. INSUL.	MIN. INSUL.	L ± .03 [0,8]	B ± .01 [0,3]	C ± .004 [0,1]
DNF18-250	.250 X .032 [6,4 X 0,8]	#22-18 [0,5-1,0]	RED	.14 [3,6]	.04 [1,0]	.81 [20,6]	.29 [7,4]	.12 [3,1]
DNF14-250		#16-14 [1,5-2,5]	BLUE	.16 [4,1]	.05 [1,3]	.83 [21,1]	.29 [7,4]	.12 [3,1]

NOTES:

- USED FOR:
 - STRANDED COPPER WIRE ONLY
 - 194°F [90°C] MAX. OPERATING TEMPERATURE
 - 300 V. MAX VOLTAGE RATING
 - 6-12 LBS INITIAL INSERTION/WITHDRAWL FORCE
- INSTALLATION TOOLS:
 - UL LISTED AND CSA CERTIFIED: CT-1550, CT-1551 CT-600A (CT-570CH), CT-2500 (CT-2570CH)
 - PANDUIT APPROVED: CT-100A, CT-160, CT-260, CT-1550, CT-1551
- WIRE STRIP LENGTH: 9/32" ^{+1/32}/₀ [7,1^{±0,8}]
- MATERIAL:
 - STAMPING: BRASS, TIN PLATED
 - HOUSING: NYLON
 - SLEEVE: BRASS, TIN PLATED
- SEE www.panduit.com FOR PACKAGE QUANTITIES INDICATED BY PART NUMBER SUFFIX
- DIMENSIONS IN BRACKETS ARE METRIC EQUIVALENT

MAX. OR MIN. WIRE INSUL. DIA.



LISTED
20H3
E78522



CERTIFIED
LR31212

TITLE
FEMALE DISCONNECTS, NYLON INSULATED, FUNNEL

CUSTOMER DRAWING

ITEM REVISION NAME
N41200BA/08

DATASET FILE NAME
N41200BA_DC/08A

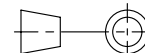
UNLESS OTHERWISE SPECIFIED,
DIMENSIONAL TOLERANCES ARE: IN [mm]

.x ± .1 [2.54] .xxx ± .005 [.13]
.xx ± .01 [.25] ANGLES ± 5°



MATERIAL:
SEE NOTES

DRAWING NUMBER:
A41200



THIRD ANGLE
PROJECTION

REV	DATE	BY	CHK	APR	DESCRIPTION	ECN
08	10.02.12	JBN	LCA	VMB	ADDED METRIC EQUIVALENT. REVISED NOTES. UPDATED TO CURRENT STANDARDS.	A41200

DRAWN BY FES	DATE -	CHK LA	SCALE N.T.S.	SHEET 1 OF 1	SIZE A
-----------------	-----------	-----------	-----------------	--------------	-----------

D10100DA/12