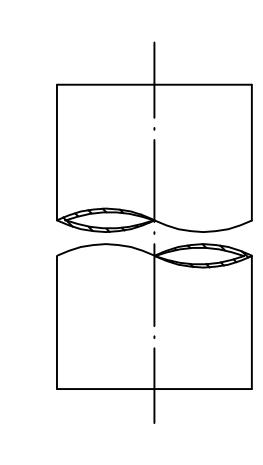
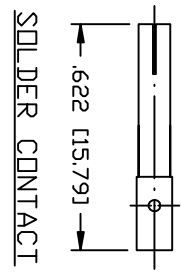
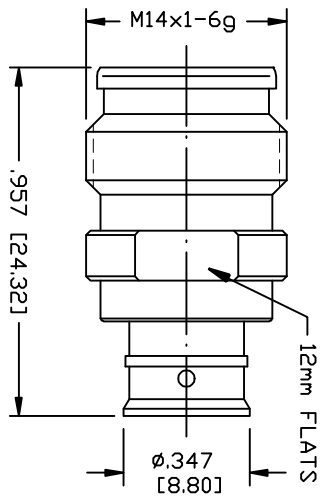


PART NO.		RFD-225F-HPL	
REV	DESCRIPTION	DWN	DATE
—	ENGINEERING RELEASE	CZS	10/05/20
		APPROVED	JDMC



SHRINK TUBING NOT TO SCALE

SPECIFICATIONS:

INTERFACE: IEC61169-66
 IMPEDANCE: 50 Ohms
 FREQUENCY RANGE: 0-6 GHz
 INSERTION LOSS: -0.1 dB MAX
 RL MEASURED ON: SPP-250-LLPL X2 CONNECTORS
 RETURN LOSS: 32 dB DC-700 MHZ
 RETURN LOSS: 28 dB 700-2000 MHZ
 RETURN LOSS: 25 dB 2000-3000 MHZ
 RETURN LOSS: 22 dB 3000-4000 MHZ
 RETURN LOSS: 18 dB 4000-6000 MHZ
 3rd ORDER IM: 5-165 dbc @ 700 MHz & 1900 MHz
 3rd ORDER IM TEST METHOD: 2x43 dBm CARRIERS
 DC TEST VOLTAGE: 2800 V @ SEA LEVEL
 INSULATION RESISTANCE: 5000 MΩ
 TEMPERATURE RANGE: -55°C TO 85°C
 MATING CYCLES: >100
 NET WEIGHT: 0.05 lb
 CERTIFICATIONS: RoHS
 ENVIRONMENTAL: IEC 60529, IP68 MATED (2.5 BAR, 1 HOUR)
 IEC 61169-1 CLAUSE 9.4.6 48 HOUR SALT MIST, 35°C
 USED ON: SPP-250-LLPP, SPO-250, SCF14-50J, SPP-250,
 FSJ1-50A, SCF14-50J, PFS1-50-P, TFI-401, EC1-50-HF

#	DESCRIPTION	QTY	MATERIAL	FINISH
5	GROUND RING	1	PHOSPHOR BRONZE	CUS2ZN ALLOY
4	SPACER	1	PTFE	NATURAL
3	CONTACT	1	PHOSPHOR BRONZE	SILVER
2	INSULATOR	1	PTFE	NATURAL
1	BODY	1	BRASS	CUS2ZN ALLOY

CUSTOMER OUTLINE DRAWING
 ALL DIMENSIONS ARE REFERENCE ONLY
 UNLESS OTHERWISE SPECIFIED: DIMENSIONS ARE IN INCHES AND [MILLIMETERS]

PROPRIETARY AND CONFIDENTIAL
 THIS DRAWING CONTAINS INFORMATION PROPRIETARY TO RF INDUSTRIES. ANY UNAUTHORIZED USE OF THIS DRAWING IS EXPRESSLY PROHIBITED WITHOUT WRITTEN PERMISSION FROM RF INDUSTRIES. ANY VIOLATION IS PUNISHABLE UNDER U.S. COPYRIGHT LAWS.

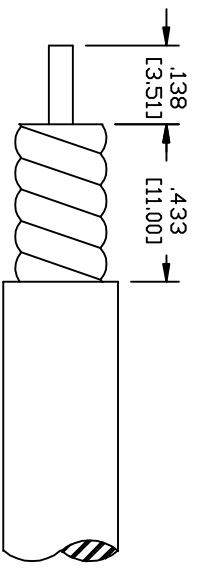
RF Industries
 DIVISION OF RF INDUSTRIES, LTD. (858) 549-6345 FAX

2.2/5 FEMALE
 FOR 1/4" SUPERFLEX CABLE

RFINDUSTRIES.COM
 7610 MIRAMAR RD.
 SAN DIEGO, CA 92126
 (858) 549-6340

CABLE GROUP DWG # **RFD-225F-HPL** REVISION
 HPL
 FOR 1/4" SUPERFLEX CABLE

FORMAT A SCALE NTS CONTROL # 000000 SHEET 1 OF 1



RECOMMENDED STRIPPING DIMENSIONS
 USE COMPATIBLE TRIM TOOL SUCH AS MCPT-1412