



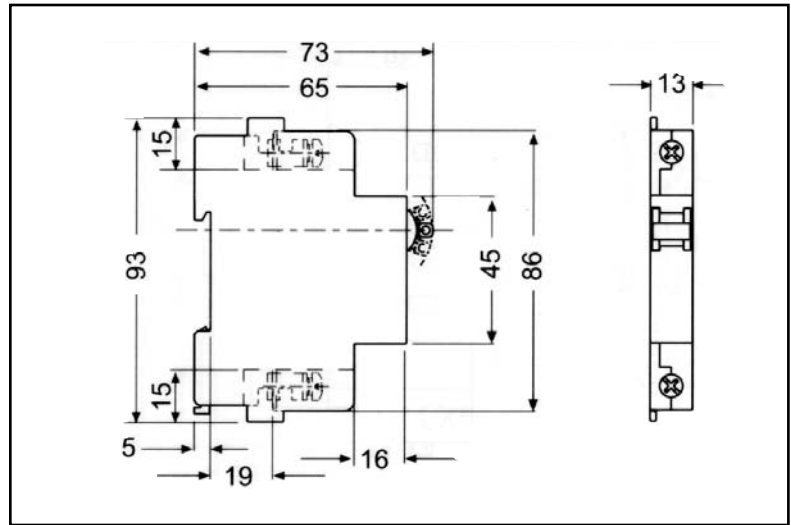
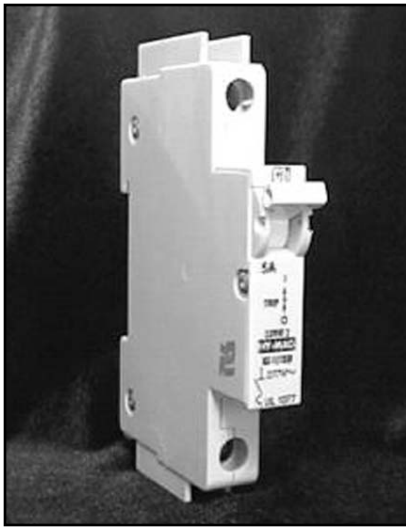
AMERICAN ELECTRICAL, INC.

INDUSTRIAL ELECTRICAL ACCESSORIES

425 SOUTHLAKE BLVD. • SUITE 9-B • RICHMOND, VA 23236 • (804) 379-2899 • FAX: (804) 379-8935

DIN RAIL MOUNTED CIRCUIT BREAKERS

UL 1077 RATED



FEATURES:

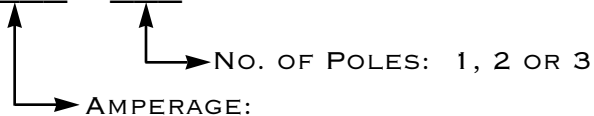
- UL 1077 APPROVED (UL 489 ALSO AVAILABLE)
- DIN RAIL MOUNTED
- COMPACT 13 MM WIDTH
- ONE, TWO & THREE POLE
- CURRENT RATING UP TO 50 A
- 100% RATING CAPABILITY
- HYDRAULIC-MAGNETIC TECHNOLOGY

TECHNICAL DATA:

NUMBERS OF POLES	1, 2 & 3
MAXIMUM VOLTAGE	277/480 50/60 HZ
MINIMUM AMP RATING	1 AMP
MAXIMUM AMP RATING	50 AMP
INTERRUPTING CAP.	5000A @ 120V 1000A @ 277V 1000A @ 480V
DIELECTRIC STRENGTH	1960V 50/60 HZ
INSULATION RESISTANCE	100 MEGAOHM
OPERATING TEMP. RANGE	-40°C TO +60°C

PART NUMBERING SYSTEM:

C A P



E.G., 1 FOR 1 AMP, 15 FOR 15 AMP, ETC.

EXAMPLE: C10A1P = 10A SINGLE POLE CIRCUIT BREAKER





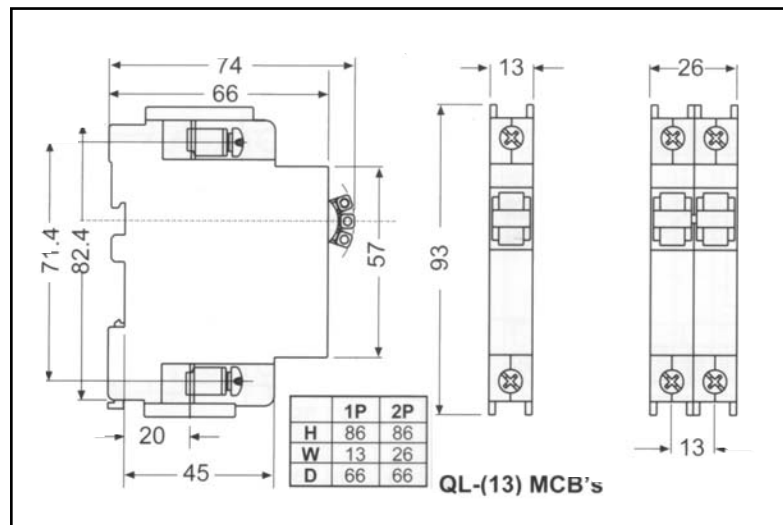
AMERICAN ELECTRICAL, INC.

INDUSTRIAL ELECTRICAL ACCESSORIES

425 SOUTHLAKE BLVD. • SUITE 9-B • RICHMOND, VA 23236 • (804) 379-2899 • FAX: (804) 379-8935

DIN RAIL MOUNTED CIRCUIT BREAKERS

UL 489 RATED



FEATURES:

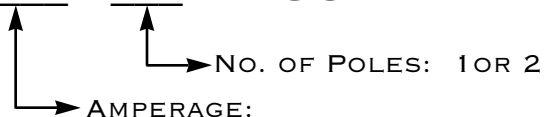
- UL 489 APPROVED (UL 1077 ALSO AVAILABLE)
- DIN RAIL MOUNTED
- COMPACT 13 MM WIDTH
- ONE & TWO POLE ONLY
- CURRENT RATING UP TO 25 A
- 100% RATING CAPABILITY
- HYDRAULIC-MAGNETIC TECHNOLOGY

TECHNICAL DATA:

NUMBERS OF POLES	1 AND 2 POLE ONLY
MAXIMUM VOLTAGE	120/240V 50/60 HZ
MINIMUM AMP RATING	1 AMP
MAXIMUM AMP RATING	25 AMP
INTERRUPTING CAP.	10,000 A
DIELECTRIC STRENGTH	1500V 50/60 HZ
INSULATION RESISTANCE	100 MEGAOHM
OPERATING TEMP. RANGE	-40°C TO +60°C

PART NUMBERING SYSTEM:

C **A** **P-489**



E.G., 1 FOR 1 AMP, 15 FOR 15 AMP, ETC.

EXAMPLE: C10A1P-489 = 10A SINGLE POLE CIRCUIT BREAKER UL 489 RATED

