


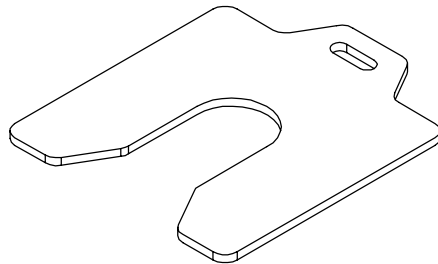
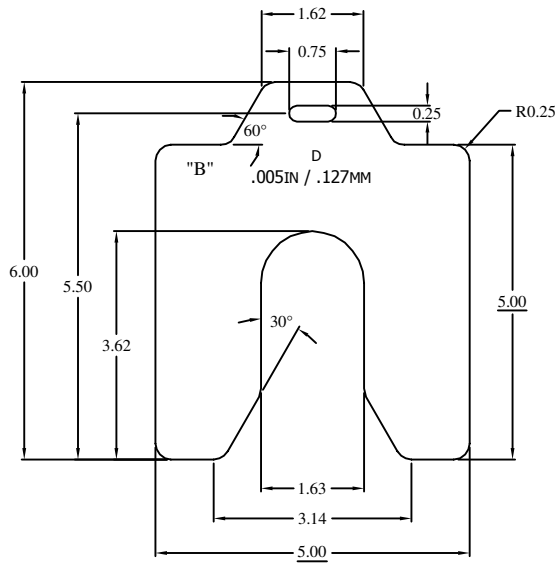
| REVISIONS |     |  |          |     |         |
|-----------|-----|--|----------|-----|---------|
| ZONE      | REV | DESCRIPTION  | DATE     | BY  | APPRVD: |
| ZONE      | 1   | INITIAL RELEASE  | 6-6-07   | DMG | CLL     |
| B7        | 2   | Added comment to optional etch or stamp "302" or "304" if material is SS302 or SS304   | 4-23-08  | DMG | CLL     |
| B7        | 3   | See ECO 1011   | 3-19-09  | DMG | CLL     |
| D1        | 4   | See ECO 1025   | 3-6-12   | DMG | CLL     |
| B3        | 5   | See ECO 1026 - CHANGED TOLERANCE FOR THICKNESS   | 6-9-12   | DGS | CLL     |
| B3        | 6   | See ECO 1030 - CHANGED TOLERANCE FOR THICKNESS   | 12-11-12 | DMG | CLL     |
| B7        | 7   | See ECO 1041 - Newly developed Geometry, changed marking information and added barcode | 7-15-15  | DMG | JW      |

**PRINT APPROVAL**




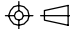
CUST#: SHIM \_\_\_\_\_  
 DWG#: MSD-XXX REV: 7  
 BY: DAGO GARZA DATE: 12-11-12

| THK.             | TOL.     | P/N 316SS.  | P/N 302/304 SS. | P/N STEEL. | FLATNESS. | ALLOWABLE BURR |
|------------------|----------|-------------|-----------------|------------|-----------|----------------|
| .001             | ± .00008 | 316-MSD001. | MSD001.         | _____      | N/A       | .0005          |
| .002             | ± .0001  | 316-MSD002. | MSD002.         | _____      | N/A       | .0005          |
| .003             | ± .00015 | 316-MSD003. | MSD003.         | _____      | N/A       | .0005          |
| .004             | ± .0002  | 316-MSD004. | MSD004.         | _____      | N/A       | .0005          |
| .005             | ± .00025 | 316-MSD005. | MSD005.         | _____      | N/A       | .0005          |
| .006             | ± .0003  | 316-MSD006. | MSD006.         | _____      | N/A       | .001           |
| .007             | ± .00035 | 316-MSD007. | MSD007.         | _____      | N/A       | .001           |
| .008             | ± .0004  | 316-MSD008. | MSD008.         | _____      | N/A       | .001           |
| .009             | ± .00045 | 316-MSD009. | MSD009.         | _____      | N/A       | .001           |
| .010             | ± .0005  | 316-MSD010. | MSD010.         | _____      | N/A       | .001           |
| .012             | ± .0006  | 316-MSD012. | MSD012.         | _____      | N/A       | .001           |
| .015             | ± .0005  | 316-MSD015. | MSD015.         | _____      | N/A       | .001           |
| .020             | ± .0005  | 316-MSD020. | MSD020.         | _____      | N/A       | .001           |
| .025             | ± .00075 | 316-MSD025. | MSD025.         | _____      | N/A       | .001           |
| .031             | ± .004   | 316-MSD031. | MSD031.         | _____      | N/A       | .002           |
| ** .050          | ± .001   | 316-MSD050. | MSD050.         | _____      | ± .015    | .002           |
| ** .062          | ± .006   | 316-MSD062. | MSD062.         | _____      | ± .015    | .002           |
| ** .075          | ± .002   | 316-MSD075. | MSD075.         | _____      | ± .015    | .002           |
| ** .100          | ± .002   | 316-MSD100. | MSD100.         | _____      | ± .015    | .002           |
| ** .125          | ± .0025  | 316-MSD125. | MSD125.         | _____      | ± .015    | .002           |
| $\frac{3}{16}$ " | ± .010   | _____       | MSD-187-SS.     | MSD-187-S  | ± .015    | .005           |
| $\frac{1}{4}$ "  | ± .012   | _____       | MSD-250-SS.     | MSD-250-S  | ± .015    | .005           |
| $\frac{3}{8}$ "  | ± .020   | _____       | MSD-375-SS.     | MSD-375-S  | ± .015    | .005           |
| $\frac{1}{2}$ "  | ± .025   | _____       | MSD-500-SS.     | MSD-500-S  | ± .015    | .005           |
| $\frac{5}{8}$ "  | ± .030   | _____       | MSD-625-SS.     | MSD-625-S  | ± .015    | .005           |
| $\frac{3}{4}$ "  | ± .035   | _____       | MSD-750-SS.     | MSD-750-S  | ± .015    | .005           |
| 1"               | ± .050   | _____       | MSD-100-SS.     | MSD-100-S  | ± .015    | .005           |



**NOTE:**

1. "\*\*\*" = For 316 material, STD gauge thickness applies (±.006")
2. "B" = If 316 Shim, Etch or Stamp "316" Here.
3. Mark shim with shim size, thickness in standard and metric.

|   |  |               |              |   |
|---|--|---------------|--------------|---|
| UNLESS OTHERWISE SPECIFIED, ALL DIMENSIONS ARE IN INCHES, AND TOLERANCES SHALL BE:                  | DWG TYPE   | DETAIL - PART |              |  |
|   | SIGNATURES   | DATE          | MO-DA-YR     |   |
| .0 = ±.030"<br>.00 = ±.015"<br>.000 = ±.005"<br>Fractions = $\pm\frac{1}{16}$ "<br>Angular = ±30min | DWN: DMG   | 6-6-07        |              | CUSTOMER: Maudlin & Son Mfg.  |
| MATL: See Table   | APPRVD: CLL  | 6-6-07        |              | PART NUMBER: See Table  |
| THK: See Table  | THIRD ANGLE PROJECTION  |               |              | DESCRIPTION: MSD Shims  |
|   |  |               |              | DWG No.: MSD-XXX  |
|   |  |               |              | REVISION 7  |
|   | SCALE: 1:1   | SIZE          | SHEET 1 of 1 |   |