

---

# HIGH-LEVERAGE CABLE CUTTER

---

30% less force needed to cut\*



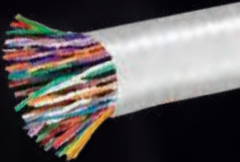
**2/0**  
COPPER



**4/0**  
ALUMINUM



**100-pair 24 AWG**  
COMMUNICATIONS  
CABLE



\*30% less force to cut compared to Klein's 63050 model.

**KLEIN  
TOOLS**





# HIGH-LEVERAGE CABLE CUTTER

Cable-gripping shear-type jaws and high-leverage design cut aluminum, copper and communications cable. Cutting surfaces are through-hardened, not case-hardened for added durability and long life.



30% less force needed to cut\*

## CABLE-GRIPPING SHEAR-TYPE JAWS



## HIGH-LEVERAGE DESIGN



- Cut 4/0 aluminum, 2/0 soft copper, 100-pair 24 AWG communications cable
- High-leverage design for exceptional cutting capability
- Precision, one-hand shearing action
- Perfect for working in confined spaces
- Through-hardened (not case-hardened) for longer-lasting cutting surfaces
- Hot-riveted joint for smooth action & no handle wobble
- Forged, custom, US-made tool steel for maximum durability



2/0  
COPPER

4/0  
ALUMINUM

100-pair 24 AWG  
COMMUNICATIONS  
CABLE

63225



For Professionals  
SINCE 1857™



Cat. No.	UPC 0-92644+	Cutting Capacity	Overall Length	Weight
63225	63225-9	4/0 aluminum, 2/0 soft copper, 100-pair 24 AWG communications cable	9.07" (23 cm)	0.97 lb (0.44 kg)

**Warning statement:** Visit [www.kleintools.com](http://www.kleintools.com) for safety warnings. Do not use to cut steel or ACSR.  
\*30% less force to cut compared to Klein's 63050 model.



See our complete line of Cable Cutters  
[www.kleintools.com](http://www.kleintools.com)



© 2020 Klein Tools, Inc.  
Lincolnshire, IL 60069  
82922 Rev. 10/20 B